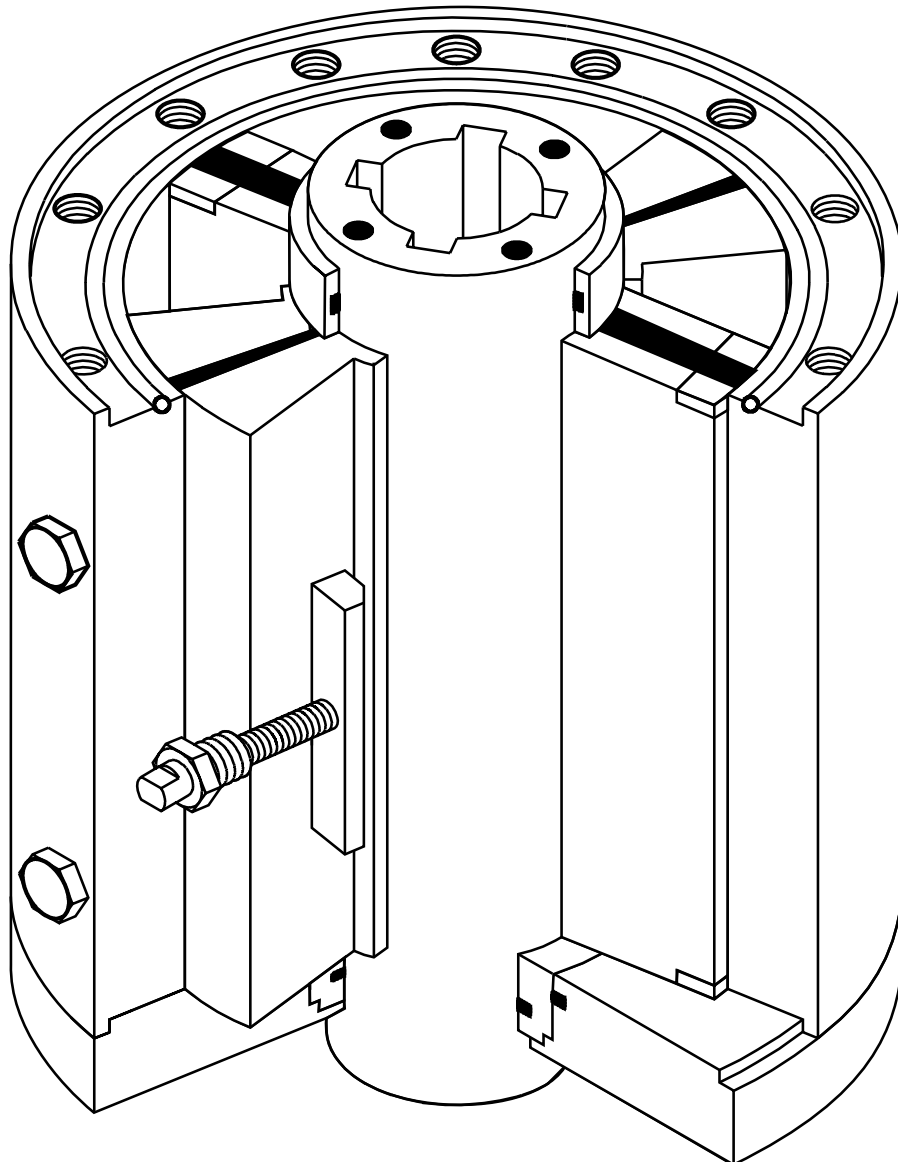


RV - Series

Rotary Vane Valve Actuators

Actuator Specifications & Dimensional Data

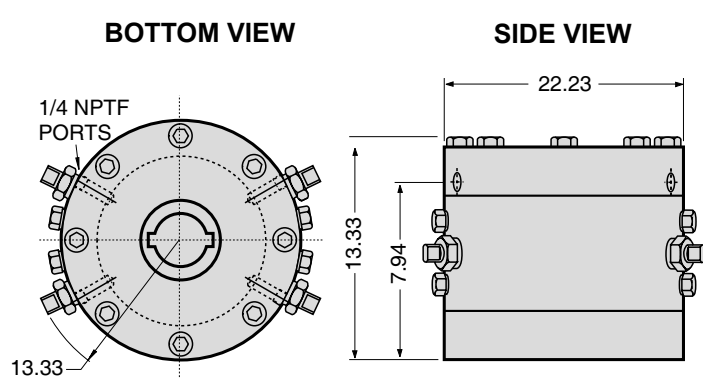


METRIC UNITS

- Dimensions : Centimeters (cm)
- Torque: Newton Meters (N-m)
- Pressure: Bar
- Weight: Kilograms (kg)
- Volume: Cubic Centimeters (cm³)
Liters (L)

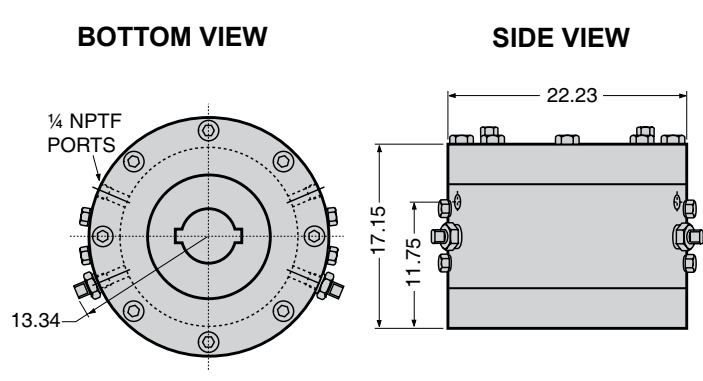
Actuator Specifications

NOTE: Bolt circle, rotor bore, keyway quantity and size of mounting holes for RV-Series actuators will be custom fitted to specific valve. All dimensional data is subject to change. ALL DIMENSIONS SHOWN IN CENTIMETERS.



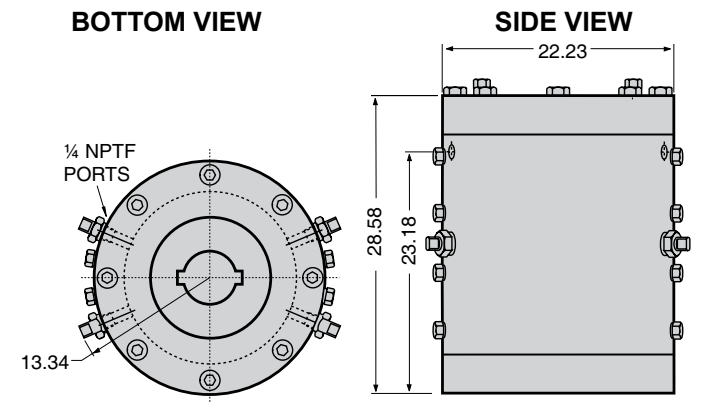
6 1/2 x 2 ROTARY VANE ACTUATOR

- Torque output 18.84 Nm/bar
- Maximum working pressure 103 bar
- Maximum test pressure 207 bar
- Note: Consult factory if higher pressure rating required.
- Minimum working pressure 6.9 bar
- Maximum acceptable valve stem 6.66 cm. diameter
- Maximum wrench square 5.08 cm. across flats
- Weight of actuator including hydraulic fluid 17.7 kg.
- Actual fluid displacement per 90° stroke equals 3.4 L
- On all units equipped with gas hydraulic tanks:
Gas consumption per 90° stroke equals 0.6 standard m³ @ 69 bar
- Number of strokes of standard 66 cm³ hand pump per 90° stroke equals 5.5.



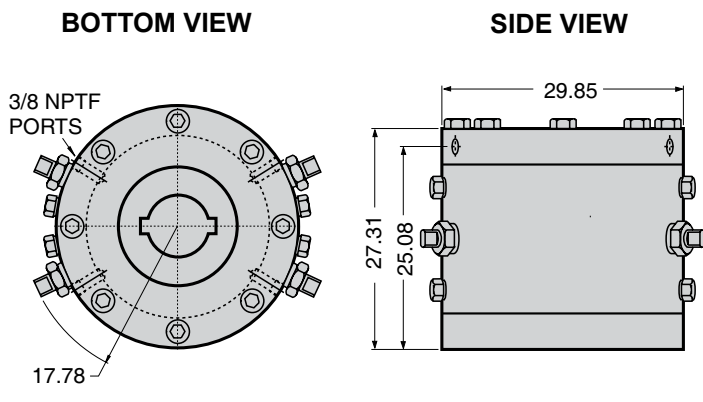
6 1/2 x 3 1/2 ROTARY VANE ACTUATOR

- Torque output 32.8 Nm/bar
- Maximum working pressure 99.3 bar
- Maximum test pressure 206.8 bar
- Note: Consult factory if higher pressure rating required.
- Minimum working pressure 6.9 bar
- Maximum acceptable valve stem 6.67 cm. diameter
- Maximum wrench square 5.08 cm. across flats
- Weight of actuator including hydraulic fluid 42.6 kg.
- Actual fluid displacement per 90° stroke equals .60 l
- On all units equipped with gas hydraulic tanks:
Gas consumption per 90° stroke equals 0.2 standard m³ @ 69 bar
- Number of strokes of standard 66 cm³ hand pump per 90° stroke equals 9.



6 1/2 x 8 ROTARY VANE ACTUATOR

- Torque output 77.56 Nm/bar
- Maximum working pressure 99.3 bar
- Maximum test pressure 206.8 bar
- Note: Consult factory if higher pressure rating required.
- Minimum working pressure 6.9 bar
- Maximum acceptable valve stem 6.67 cm. diameter
- Maximum wrench square 5.08 cm. across flats
- Weight of actuator including hydraulic fluid 63.5 kg.
- Actual fluid displacement per 90° stroke equals 1.34 L
- On all units equipped with gas hydraulic tanks:
Gas consumption per 90° stroke equals 0.2 standard m³ @ 69 bar
- Number of strokes of standard 66 cm³ hand pump per 90° stroke equals 21.



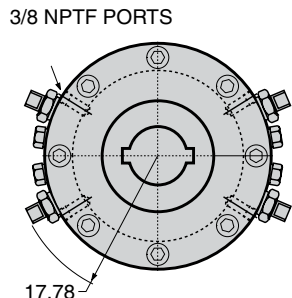
9 x 7 ROTARY VANE ACTUATOR

- Torque output 118.06 Nm/bar
- Maximum working pressure 99.3 bar
- Maximum test pressure 206.8 bar
- Note: Consult factory if higher pressure rating required.
- Minimum working pressure 6.9 bar
- Maximum acceptable valve stem 9.53 cm. diameter
- Maximum wrench square 6.35 cm. across flats
- Weight of actuator including hydraulic fluid 104.3 kg.
- Actual fluid displacement per 90° stroke equals 2.05 L
- On all units equipped with gas hydraulic tanks:
Gas consumption per 90° stroke equals 0.4 standard m³ @ 69 bar
- Number of strokes of standard 66 cm³ hand pump per 90° stroke equals 32.

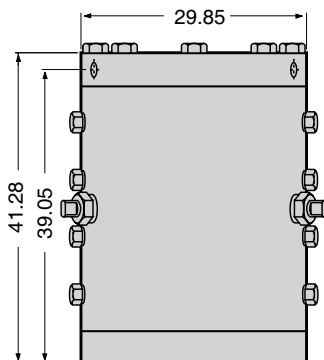
Actuator Specifications

NOTE: Bolt circle, rotor bore, keyway quantity and size of mounting holes for RV-Series actuators will be custom fitted to specific valve. All dimensional data is subject to change. ALL DIMENSIONS SHOWN IN CENTIMETERS.

BOTTOM VIEW



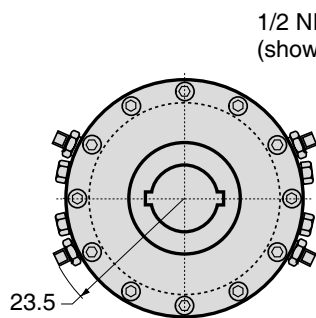
SIDE VIEW



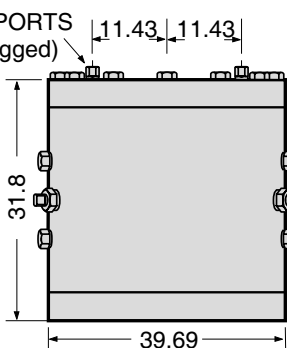
9 x 12 ROTARY VANE ACTUATOR

- Torque output 210.72 Nm/bar
- Maximum working pressure 99.3 bar
- Maximum test pressure 206.8 bar
- Note: Consult factory if higher pressure rating required.
- Minimum working pressure 6.9 bar
- Maximum acceptable valve stem 9.53 cm. diameter
- Maximum wrench square 6.35 cm. across flats
- Weight of actuator including hydraulic fluid 157.4 kg.
- Actual fluid displacement per 90° stroke equals 3.7 L
- On all units equipped with gas hydraulic tanks:
Gas consumption per 90° stroke equals 0.6 standard m³ @ 69 bar
- Number of strokes of standard 66 cm³ hand pump per 90° stroke equals 57.

BOTTOM VIEW



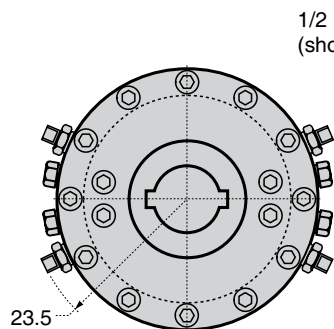
SIDE VIEW



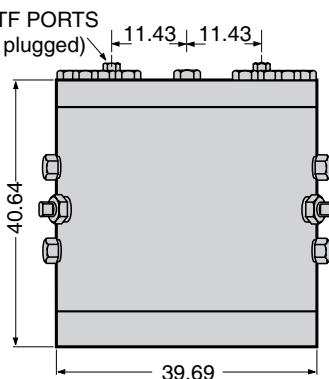
12½ x 8 ROTARY VANE ACTUATOR

- Torque output 306 Nm/bar
- Maximum working pressure 103 bar
- Maximum test pressure 199 bar
- Note: Consult factory if higher pressure rating required.
- Minimum working pressure 6.9 bar
- Maximum acceptable valve stem 11.43 cm. diameter
- Weight of actuator including hydraulic fluid 226.8 kg.
- Actual fluid displacement per 90° stroke equals 5.36 L
- On all units equipped with gas hydraulic tanks:
Gas consumption per 90° stroke equals 0.92 standard m³ @ 69 bar
- Number of strokes of standard 66 cm³ hand pump per 90° stroke equals 82.

BOTTOM VIEW



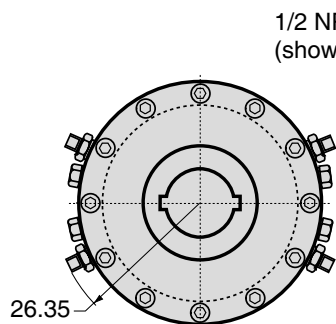
SIDE VIEW



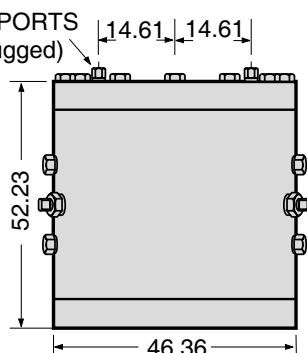
12½ x 12 ROTARY VANE ACTUATOR

- Torque output 472.28 Nm/bar
- Maximum working pressure 99.3 bar
- Maximum test pressure 198.6 bar
- Note: Consult factory if higher pressure rating required.
- Minimum working pressure 6.9 bar
- Maximum acceptable valve stem 11.43 cm. diameter
- Maximum wrench square 8.26 cm. across flats
- Weight of actuator including hydraulic fluid 299.4 kg.
- Actual fluid displacement per 90° stroke equals 8.03 L
- On all units equipped with gas hydraulic tanks:
Gas consumption per 90° stroke equals 1.4 standard m³ @ 69 bar
- Number of strokes of standard 66 cm³ hand pump per 90° stroke equals 123.

BOTTOM VIEW



SIDE VIEW



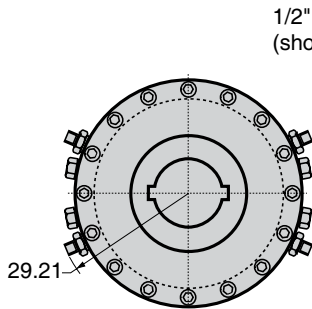
14½ x 16 ROTARY VANE ACTUATOR

- Torque output 855.32 Nm/bar
- Maximum working pressure 103 bar
- Maximum test pressure 190 bar
- Note: Consult factory if higher pressure rating required.
- Minimum working pressure 6.9 bar
- Maximum acceptable valve stem 13.97 cm. diameter
- Weight of actuator including hydraulic fluid 483 kg.
- Actual fluid displacement per 90° stroke equals 14.96 L
- On all units equipped with gas hydraulic tanks:
Gas consumption per 90° stroke equals 2.58 standard m³ @ 69 bar
- Number of strokes of standard 197 cm³ hand pump per 90° stroke equals 76.

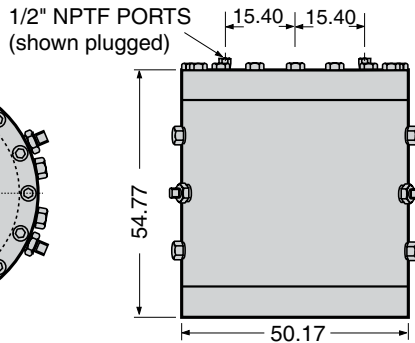
Actuator Specifications

NOTE: Bolt circle, rotor bore, keyway quantity and size of mounting holes for RV-Series actuators will be custom fitted to specific valve.
All dimensional data is subject to change. ALL DIMENSIONS SHOWN IN CENTIMETERS.

BOTTOM VIEW



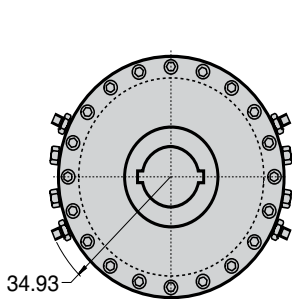
SIDE VIEW



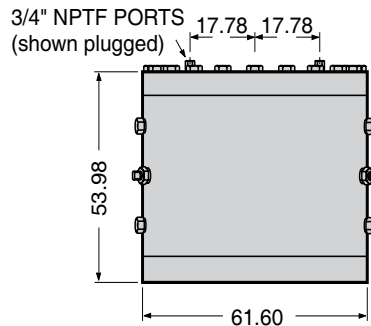
16½ x 16 ROTARY VANE ACTUATOR

- Torque output 1,129.02 Nm/bar
- Maximum working pressure 99.3 bar
- Maximum test pressure 148.9 bar
- Note: Consult factory if higher pressure rating required.
- Minimum working pressure 6.9 bar
- Maximum acceptable valve stem 15.24 cm. diameter
- Weight of actuator including hydraulic fluid 601.0 kg.
- Actual fluid displacement per 90° stroke equals 20.98 L
- On all units equipped with gas hydraulic tanks:
Gas consumption per 90° stroke equals 3.6 standard m³ @ 69 bar
- Number of strokes of standard 197 cm³ hand pump per 90° stroke equals 107.

BOTTOM VIEW



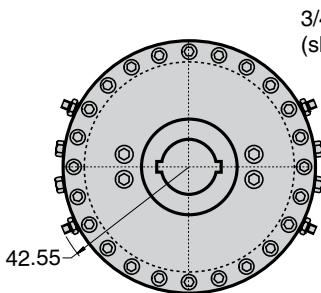
SIDE VIEW



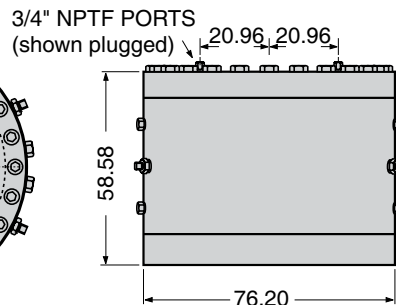
20 x 16 ROTARY VANE ACTUATOR

- Torque output 1,883.18 Nm/bar
- Maximum working pressure 99.3 bar
- Maximum test pressure 155.1 bar
- Note: Consult factory if higher pressure rating required.
- Minimum working pressure 6.9 bar
- Maximum acceptable valve stem 15.24 cm. diameter
- Weight of actuator including hydraulic fluid 852.8 kg.
- Actual fluid displacement per 90° stroke equals 32.98 L
- On all units equipped with gas hydraulic tanks:
Gas consumption per 90° stroke equals 5.7 standard m³ @ 69 bar
- Number of strokes of standard 197 cm³ hand pump per 90° stroke equals 168.

BOTTOM VIEW



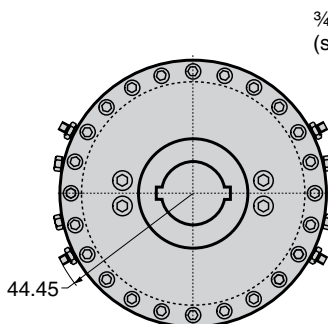
SIDE VIEW



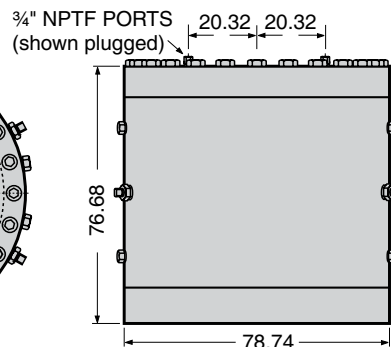
25 x 16 ROTARY VANE ACTUATOR

- Torque output 3,038.78 Nm/bar
- Maximum working pressure 99.3 bar
- Maximum test pressure 148.9 bar
- Note: Consult factory if higher pressure rating required.
- Minimum working pressure 6.9 bar
- Maximum acceptable valve stem 16.51 cm. diameter
- Weight of actuator including hydraulic fluid 1,324.5 kg.
- Actual fluid displacement per 90° stroke equals 52.96 L
- On all units equipped with gas hydraulic tanks:
Gas consumption per 90° stroke equals 9.1 standard m³ @ 69 bar
- Number of strokes of standard 197 cm³ hand pump per 90° stroke equals 270.

BOTTOM VIEW



SIDE VIEW



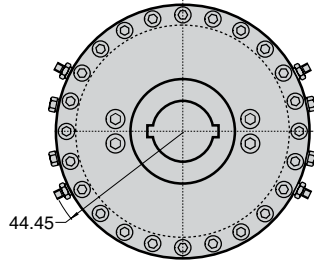
26 x 22 ROTARY VANE ACTUATOR

- Torque output 4,413.63 Nm/bar
- Maximum working pressure 99.3 bar
- Maximum test pressure 148.9 bar
- Note: Consult factory if higher pressure rating required.
- Minimum working pressure 6.9 bar
- Maximum acceptable valve stem 18.73 cm. diameter
- Weight of actuator including hydraulic fluid 1,837 kg.
- Actual fluid displacement per 90° stroke equals 76.98 L
- On all units equipped with gas hydraulic tanks:
Gas consumption per 90° stroke equals 13.3 standard m³ @ 69 bar
- Number of strokes of standard 197 cm³ hand pump per 90° stroke equals 392.

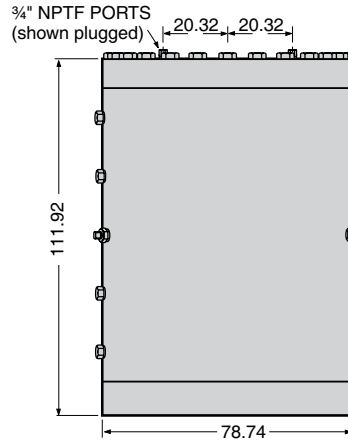
Actuator Specifications

NOTE: Bolt circle, rotor bore, keyway quantity and size of mounting holes for RV-Series actuators will be custom fitted to specific valve.
All dimensional data is subject to change. ALL DIMENSIONS SHOWN IN CENTIMETERS.

BOTTOM VIEW



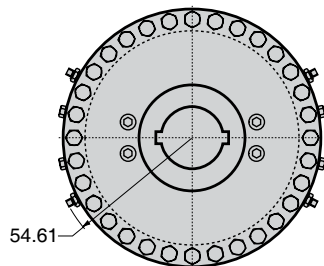
SIDE VIEW



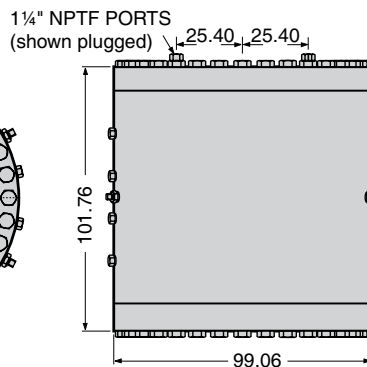
26 x 36 ROTARY VANE ACTUATOR

- Torque output 7,113.63 Nm/bar
- Maximum working pressure 68.9 bar
- Maximum test pressure 137.9 bar
- Note: Consult factory if higher pressure rating required.
- Minimum working pressure 6.9 bar
- Maximum acceptable valve stem 18.73 cm. diameter
- Weight of actuator including hydraulic fluid 3,486.8 kg.
- Actual fluid displacement per 90° stroke equals 126 L
- On all units equipped with gas hydraulic tanks:
Gas consumption per 90° stroke equals 21.7 standard m³ @ 69 bar
Number of strokes of standard 197 cm³ hand pump per 90° stroke equals 641.

BOTTOM VIEW



SIDE VIEW



33 x 32 ROTARY VANE ACTUATOR

- Torque output 9,622.58 Nm/bar
- Maximum working pressure 68.9 bar
- Maximum test pressure 103.4 bar
- Note: Consult factory if higher pressure rating required.
- Minimum working pressure 6.9 bar
- Maximum acceptable valve stem 24.13 cm. diameter
- Weight of actuator including hydraulic fluid 4,037 kg.
- Actual fluid displacement per 90° stroke equals 178 L
- On all units equipped with gas hydraulic tanks:
Gas consumption per 90° stroke equals 29.7 standard m³ @ 69 bar
Number of strokes of standard 197 cm³ hand pump per 90° stroke equals 905.

Actuator Specifications

SPEED OF OPERATION IN SECONDS PER 90° ROTATION*

ACTUATOR SIZE	OPERATING PRESSURE BAR													
	7	14	21	28	35	41	48	55	62	69	76	83	90	97
6 ½ x 2	8	5	4	4	3	3	3	2	2	2	2	2	1	1
6 ½ x 3 ½	9	6	5	5	4	3	3	3	2	2	2	2	1	1
6 ½ x 8	10	7	6	6	5	4	4	4	3 ½	3 ½	3	3	2	1
9 x 7	14	11	9	8	8	7	5	5	5	5	3	3	2	2
9 x 12	15	13	11	10	9	9	8	7	6	6	5	4	4	3
12 ½ x 8	15	14	12	11	11	10	9	9	8	8	7	6	6	6
12 ½ x 12	20	18	18	16	15	13	10	10	10	10	9	9	9	9
14 ½ x 16	32	25	20	18	16	14	14	12	12	12	12	11	11	11
16 ½ x 16	40	30	28	23	20	19	17	16	15	15	15	15	15	14
20 x 16	40	35	30	25	24	22	20	20	20	19	19	19	19	18
25 x 16	76	53	43	37	33	30	25	25	24	24	24	24	22	22
26 x 22	80	60	50	40	35	30	25	25	25	25	25	25	25	25
26 x 36	90	80	70	50	45	40	38	35	35	35				
33 x 32	254	178	146	125	111	102	95	88	83	79				

* Stroking speeds above are approximate as speed may be affected by fluid viscosity or the flow capacities of the individual control components. The listed speeds are based on actuators with gas hydraulic tanks, hand pump and the standard poppet type control block in the power supply circuit.

Adjustable speed control valves may be specified so that the stroking speed may be fine tuned to the field operating conditions. If faster speeds are required, please consult a factory representative.

Actuator Specifications

APPROXIMATE WEIGHTS FOR SHAFER ROTARY OPERATORS, HYDRAULIC TANKS AND POWER STORAGE TANKS

SIZE	OPERATOR WEIGHT kg	HYDRAULIC TANKS WEIGHT kg (PER PAIR)	POWER STORAGE TANK (STANDARD) WEIGHT kg
6½ x 2	18	16	9
6½ x 3½	45	16	9
6½ x 8	68	34	18
9 x 7	125	50	24
9 x 12	181	77	39
12½ x 8	227	120	57
12½ x 12	299	184	79
14½ x 16	484	307	125
16½ x 16	601	397	204
20 x 16	853	578	314
25 x 16	1325	1229	536
26 x 22	204	1519	658
26 x 36	3488	2433	1050
33 x 32	4038	3379	1434

APPROXIMATE WEIGHTS FOR SHAFER HAND PUMPS, 2-WAY ELECTRIC CONTROLS, AND LIMIT SWITCHES

PUMPS	CONTROL (TWO-WAY ELECTRIC)	LIMIT SWITCH
4 in. = 9 kg	1/4 in. = 27 kg	LARGE = 12 kg
12 in. = 20 kg.	1/2 in. = 34 kg	---

4" Pump, 1/4 Poppet Block = 24 kg + Cover 13 kg = Total 37 kg
 12" Pump, 1/4 Poppet Block = 46 kg + Cover 19 kg = Total 65 kg
 Linebreak Small Plate with Lockout = 19 kg + Cover 10 kg = 29 kg

4" Pump / D.H.V. = 23 kg

12" Pump / D.H.V. = 50 kg

Limit Valve (ESD) with Plate 5 kg

1-08672 Terminal Box = 5 kg

1-09027 Terminal Box = 6 kg

1/4 Poppet Block, 4 cu. in. Pump & Linebreak with cover = 43 kg

Actuator Specifications

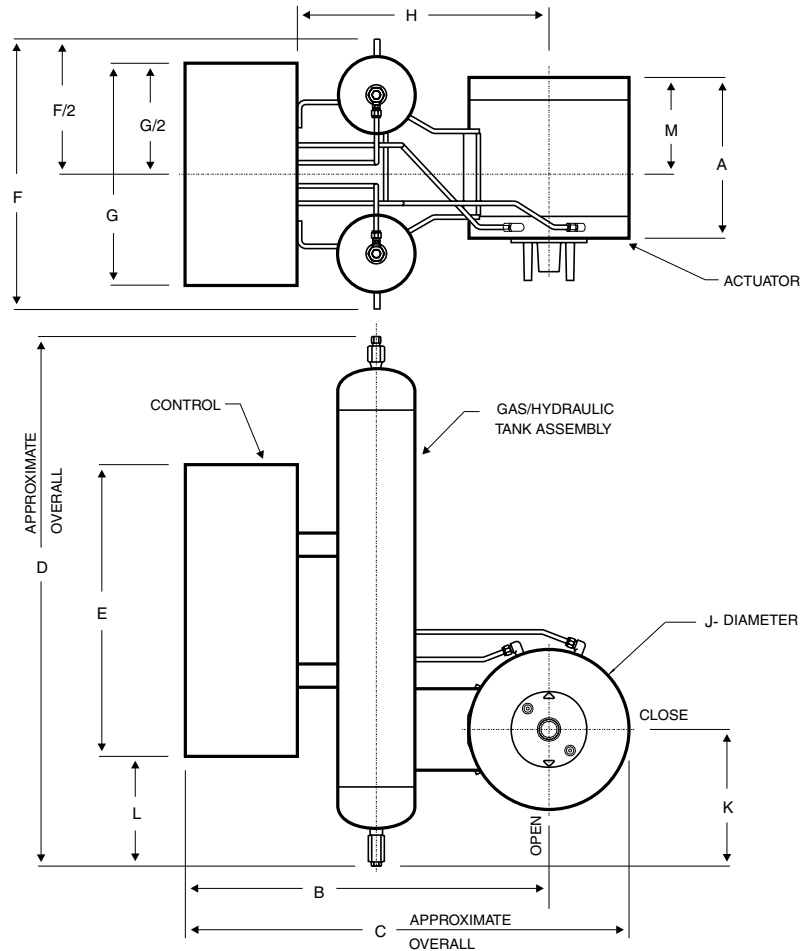
NOTE: All dimensional data is for reference only and subject to change. Depending on the application, specific actuator controls may or may not be located inside of the control box. Where specified, there may be additional pressure vessels or power storage tanks which are not shown.

GAS / HYDRAULIC ROTARY VANE - HORIZONTAL STEM, VERTICAL LINE

SIZE	A	B	C	D	E	F	G	H	J	K	L	M
6 1/2 x 2	13.34	62.23	73.66	59.69	64.14	46.36	48.90	41.28	22.23	23.50	1.27	5.72
6 1/2 x 3 1/2	17.15	62.23	73.66	59.06	64.14	46.36	48.90	41.28	22.23	23.50	1.27	9.53
6 1/2 x 8	28.58	62.23	73.66	76.20	64.14	46.36	48.90	41.28	22.23	23.50	12.07	16.51
9 x 7	27.31	75.57	90.17	78.11	64.14	53.98	48.90	53.98	29.85	27.31	10.80	13.97
9 x 12	41.28	77.47	92.08	95.25	64.14	59.06	48.90	55.88	29.85	29.85	19.05	27.94
12 1/2 x 8	31.75	82.55	99.70	114.94	64.14	59.06	48.90	60.96	40.01	29.85	29.21	19.05
12 1/2 x 12	43.18	85.73	105.41	106.68	64.14	69.22	48.90	64.14	40.01	31.12	25.40	27.31
14 1/2 x 16	52.23	113.03	135.89	119.38	82.55	85.09	58.42	81.28	46.36	41.28	17.78	23.50
16 1/2 x 16	57.15	116.21	141.61	153.04	82.55	85.09	58.42	85.09	50.17	41.28	33.66	27.31
20 x 16	59.06	125.73	156.21	147.32	82.55	101.60	58.42	93.98	61.60	44.45	31.12	26.67
25 x 16	62.87	130.18	168.28	172.09	81.92	111.76	64.14	95.25	76.20	29.21	43.82	26.67
26 x 22	81.92	*	*	*	81.92	*	64.14	*	78.74	*	*	*
26 x 36	115.57	*	*	*	81.92	*	64.14	*	78.74	*	*	*
33 x 32	104.78	*	*	*	81.92	*	64.14	*	99.06	*	*	*

* Indicates this particular size of actuator has not been used in this type of application.

All dimensions shown in centimeters.



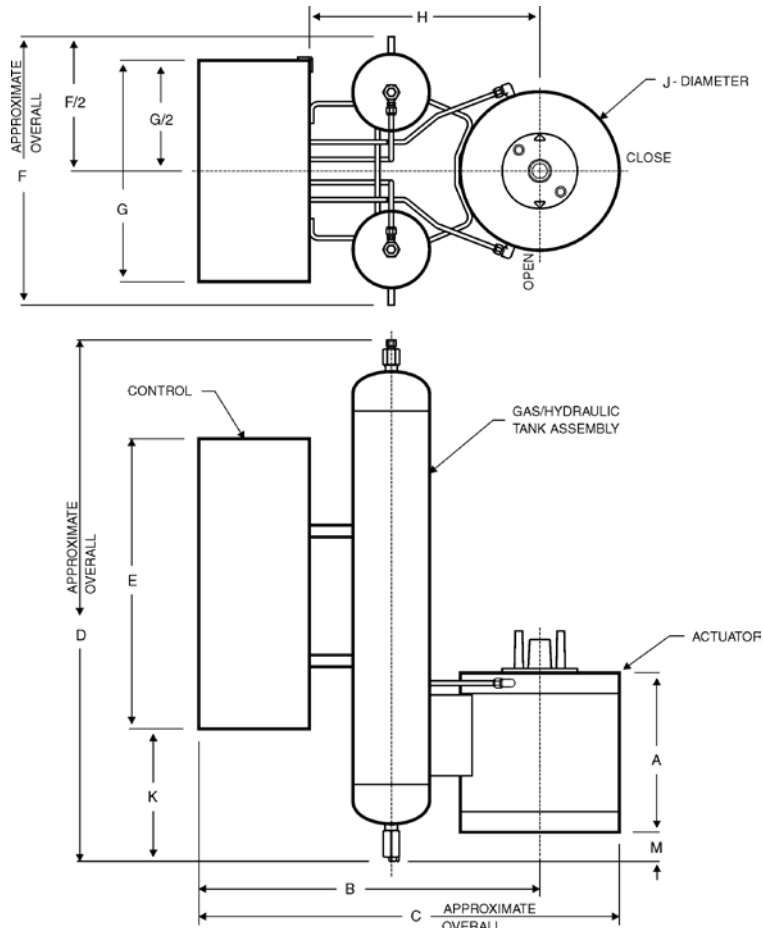
Actuator Specifications

NOTE: All dimensional data is for reference only and subject to change. Depending on the application, specific actuator controls may or may not be located inside of the control box. Where specified, there may be additional pressure vessels or power storage tanks which are not shown.

GAS / HYDRAULIC ROTARY VANE - VERTICAL STEM, HORIZONTAL LINE

SIZE	A	B	C	D	E	F	G	H	J	K
6 1/2 x 2	13.34	62.23	72.39	59.06	64.14	46.36	48.90	40.01	22.23	1.27
6 1/2 x 3 1/2	17.15	61.60	72.39	59.06	64.14	46.36	48.90	40.01	22.23	1.27
6 1/2 x 8	28.58	61.60	72.39	76.20	64.14	46.36	48.90	40.01	22.23	12.07
9 x 7	27.31	69.85	85.09	78.11	64.14	53.98	48.90	48.90	29.85	10.80
9 x 12	41.28	72.39	87.00	95.25	64.14	59.06	48.90	50.80	29.85	19.05
12 1/2 x 8	31.75	81.28	100.97	114.94	64.14	59.06	48.90	59.69	40.01	22.86
12 1/2 x 12	43.18	81.28	100.97	106.68	64.14	69.22	48.90	59.69	40.01	25.40
14 1/2 x 16	52.23	98.43	121.29	119.38	82.55	85.09	58.42	66.68	46.36	17.78
16 1/2 x 16	57.15	101.60	127.00	153.04	82.55	85.09	58.42	70.49	50.17	33.66
20 x 16	59.06	112.40	142.88	147.32	82.55	101.60	58.42	80.65	61.60	31.12
25 x 16	62.23	129.54	167.64	172.09	92.71	111.76	64.14	92.71	76.20	34.29
26 x 22	81.28	93.98	172.72	214.00	92.71	121.92	64.14	96.52	78.74	55.25
26 x 36	114.94	147.32	186.69	176.53	92.71	144.78	64.14	110.49	78.74	33.66
33 x 32	104.78	158.12	207.65	247.65	93.35	144.78	64.14	121.29	99.06	71.76

* Indicates this particular size of actuator has not been used in this type of application.
All dimensions shown in centimeters.



Actuator Specifications

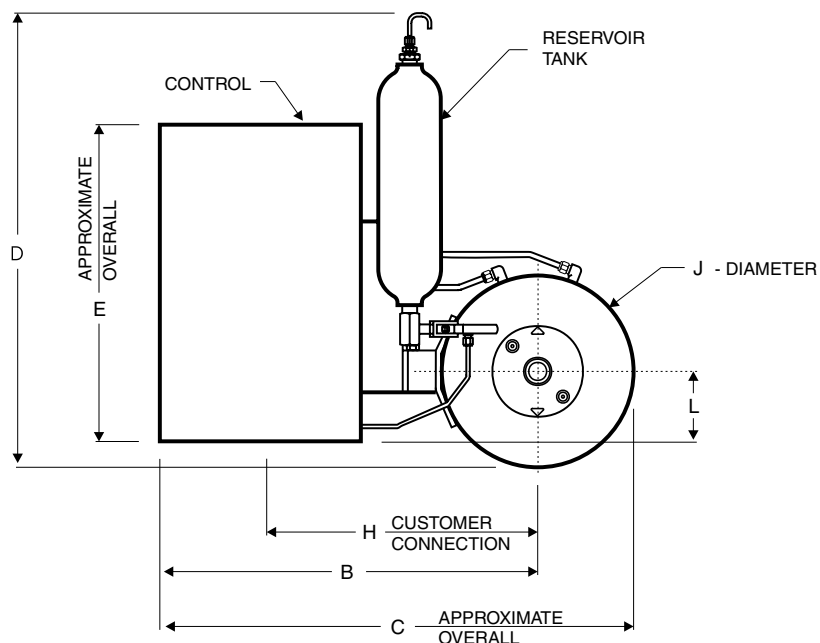
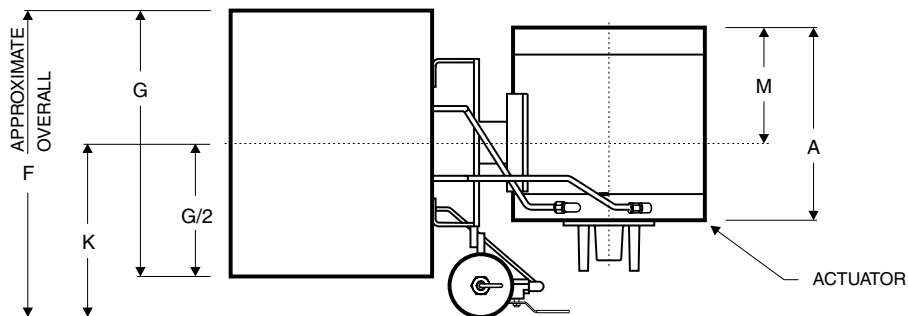
NOTE: All dimensional data is for reference only and subject to change. Depending on the application, specific actuator controls may or may not be located inside of the control box. Where specified, there may be additional pressure vessels or power storage tanks which are not shown.

CENTRAL HYDRAULIC SYSTEM - HORIZONTAL STEM, VERTICAL LINE

SIZE	A	B	C	D	E	F	G	H	J	K	L	M
6 1/2 x 2	13.34	59.69	68.58	78.11	57.79	55.88	48.90	43.18	22.23	31.75	11.43	5.72
6 1/2 x 3 1/2	17.15	62.87	73.66	78.11	57.79	55.88	48.90	43.18	22.23	31.75	11.43	9.53
6 1/2 x 8	28.58	62.87	73.66	78.11	57.79	55.88	48.90	43.18	22.23	31.75	11.43	16.51
9 x 7	27.31	66.68	81.28	80.01	57.79	55.88	48.90	46.99	29.85	31.75	12.70	13.34
9 x 12	41.28	66.68	81.28	80.01	57.79	57.15	48.90	46.99	29.85	31.75	12.70	27.31
12 1/2 x 8	31.75	71.12	91.44	82.55	57.79	59.06	48.90	52.07	40.01	31.75	12.70	22.23
12 1/2 x 12	43.18	71.12	91.44	85.09	57.79	59.06	48.90	52.07	40.01	31.75	12.70	27.31
14 1/2 x 16	52.22	87.00	109.86	88.27	82.55	67.31	71.76	59.06	46.36	31.75	22.86	23.50
16 1/2 x 16	57.15	88.90	114.30	90.17	82.55	67.31	71.76	60.96	50.17	31.75	22.86	27.31
20 x 16	59.06	95.25	126.37	95.89	82.55	67.31	71.76	67.31	61.60	31.75	22.86	26.67
25 x 16	62.23	93.35	131.45	116.84	92.71	63.50	64.14	73.03	76.20	31.75	13.97	31.12
26 x 22	81.28	*	*	*	92.71	*	64.14	0.00	78.74	*	*	*
26 x 36	114.94	*	*	*	92.71	*	64.14	0.00	78.74	*	*	*
33 x 32	104.78	*	*	*	92.71	*	64.14	0.00	99.06	*	*	*

* Indicates this particular size of actuator has not been used in this type of application.

All dimensions shown in centimeters.



Actuator Specifications

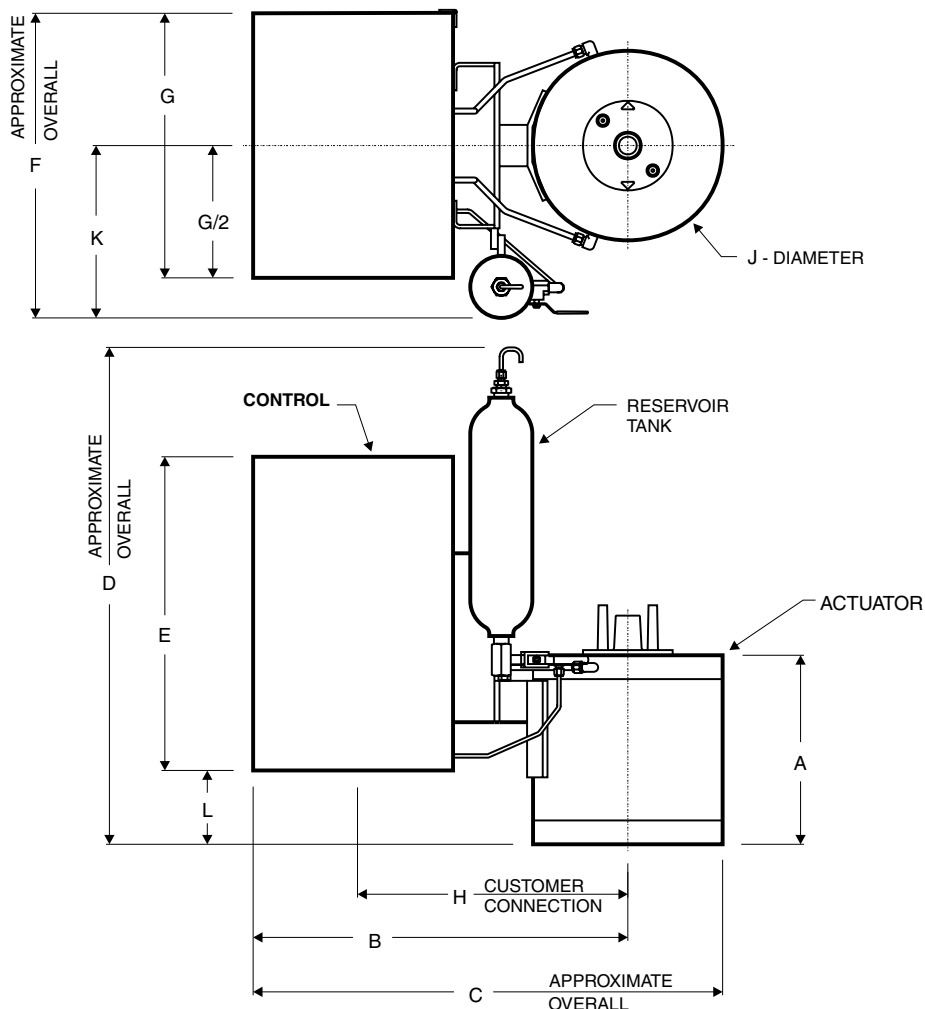
NOTE: All dimensional data is for reference only and subject to change. Depending on the application, specific actuator controls may or may not be located inside of the control box. Where specified, there may be additional pressure vessels or power storage tanks which are not shown.

CENTRAL HYDRAULIC SYSTEM - VERTICAL STEM, HORIZONTAL LINE

SIZE	A	B	C	D	E	F	G	H	J	K	L
6 1/2 x 2	13.34	62.87	73.66	76.84	57.79	55.88	48.90	43.18	22.23	31.75	1.27
6 1/2 x 3 1/2	17.15	62.87	73.66	80.65	57.79	55.88	48.90	43.18	22.23	31.75	2.54
6 1/2 x 8	28.58	62.87	73.66	87.63	57.79	55.88	48.90	43.18	22.23	31.75	9.53
9 x 7	27.31	66.04	81.28	83.82	57.79	55.88	48.90	46.99	29.85	31.75	6.35
9 x 12	41.28	66.04	81.28	97.79	57.79	55.88	48.90	46.99	29.85	31.75	20.32
12 1/2 x 8	31.75	69.22	86.36	87.63	57.79	55.88	48.90	49.53	40.01	31.75	3.81
12 1/2 x 12	43.18	71.76	91.44	97.79	57.79	55.88	48.90	52.71	40.01	31.75	19.69
14 1/2 x 16	52.22	87.00	109.86	102.87	82.55	67.31	71.76	59.06	46.36	31.75	10.16
16 1/2 x 16	57.15	88.90	114.30	104.14	82.55	67.31	71.76	60.96	50.17	31.75	16.51
20 x 16	59.06	95.25	126.37	103.51	82.55	67.31	71.76	67.31	61.60	31.75	15.24
25 x 16	62.23	93.35	131.45	128.91	92.71	63.50	64.14	72.39	76.20	31.75	36.20
26 x 22	81.28	94.62	133.99	135.26	92.71	63.50	64.14	73.03	78.74	31.75	42.55
26 x 36	114.94	*	*	*	92.71	*	64.14	*	*	*	*
33 x 32	104.78	*	*	*	92.71	*	64.14	*	*	*	*

* Indicates this particular size of actuator has not been used in this type of application.

All dimensions shown in centimeters.



2500 Park Ave. West, Mansfield, OH 44906
Phone (419) 529-4311 • FAX (419) 529-3688

RV-ASDD-I-3-06-09