

# Shafer™ Gasoline Engine Hydraulic Power Unit

This hydraulic power unit provides reliable high pressure hydraulic fluid for powering valve actuators or other hydraulic equipment.

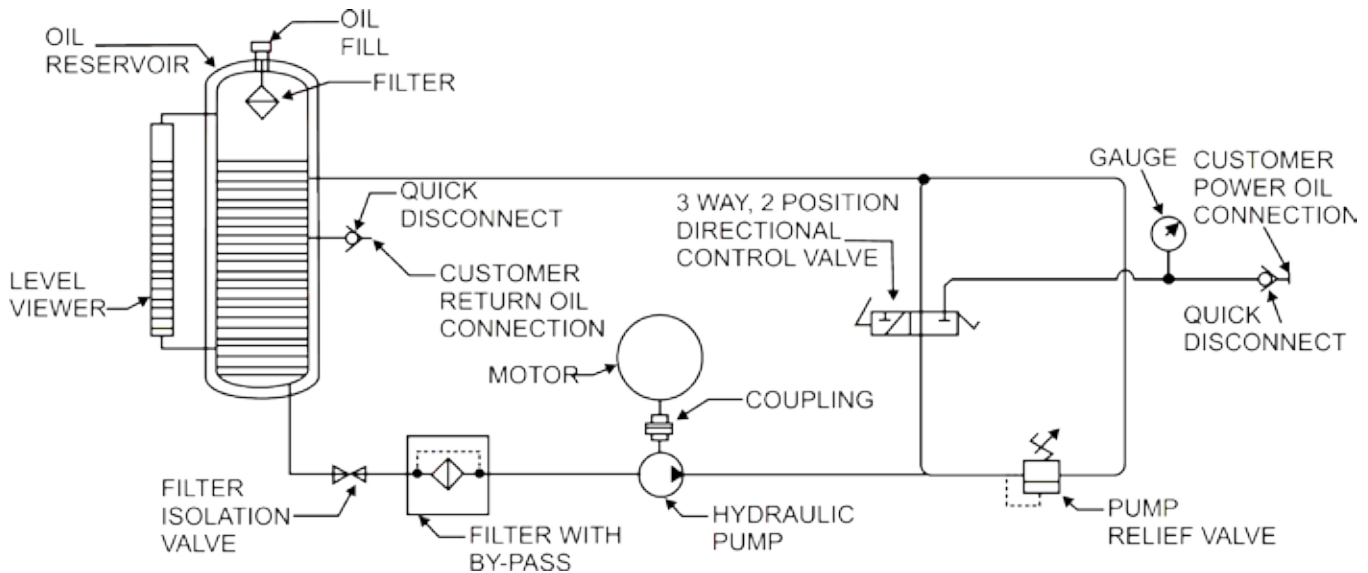
The unit is connected to the valve operator by flexible hydraulic hose and quick disconnect couplings. Smooth, continual, high pressure fluid is used to stroke the valve operator to the desired position.

The two man lift portable unit consists of a quality gasoline engine with spark arresting muffler, coupled to a high pressure hydraulic pump with reservoir and directional control valve.

The smaller units can be relatively lightweight and compact and is easily transported from valve site to valve site in the bed of any light duty utility vehicles.



# GASOLINE ENGINE HYDRAULIC POWER UNIT



[www.EmersonProcess.com/Shaffer](http://www.EmersonProcess.com/Shaffer)

**Shafer**  
2500 Park Ave. West  
Mansfield, OH 44906  
Phone (419) 529-4311, FAX (419) 529-3688  
[info.Mansfield@EmersonProcess.com](mailto:info.Mansfield@EmersonProcess.com)

**Shafer**<sup>™</sup>

Bulletin PGP-25-072009

  
**EMERSON**<sup>™</sup>  
Process Management