

MOD L10: Replacement Procedure

Linear ActCont ER 2-Way Gas

05-03-11

Linear Actuator Control – Electric Remote 2-Way

Replacement Procedure on a Linear Actuator with a System
using Power Gas

MOD L10: Replacement Procedure

Linear ActCont ER 2Way Gas

05-03-11

The purpose of this procedure is to guide the replacement of an Actuator Control with standard features.

This procedure is to be used in conjunction with the following Maintenance and Service Manuals.

Shafer Linear Actuator Installation and Service Manual	Bulletin LSM-01102001
*Schematic Diagram	5043-S-SPECIAL

*Numbers in this document contained in [] will correspond to the Item Numbers on Schematic Drawing 5043-S and 5043-S-Special

NOTE: With pressure in the pipeline, installation should be done with the valve in the OPEN position. With no pressure in the pipeline, installation should be done with the valve in the CLOSE position.

WARNING: 1. Turn power gas off (bleed down the power storage tank if applicable).



Remove the Old Control Box and Hand Pump

1. Remove the piping to the power port and exhaust port (if existing) of the old control block.
2. Remove the two gas tube lines (OPEN and CLOSE) running from the control block to the top or side of the gas hydraulic tanks.
3. Remove the tube line going from the power storage tank to the control block, if applicable.
4. This should complete the pipe/tube connections freeing the old control box. Remove the old control box and set the parts aside.

MOD L10: Replacement Procedure

Linear ActCont ER 2Way Gas

05-03-11

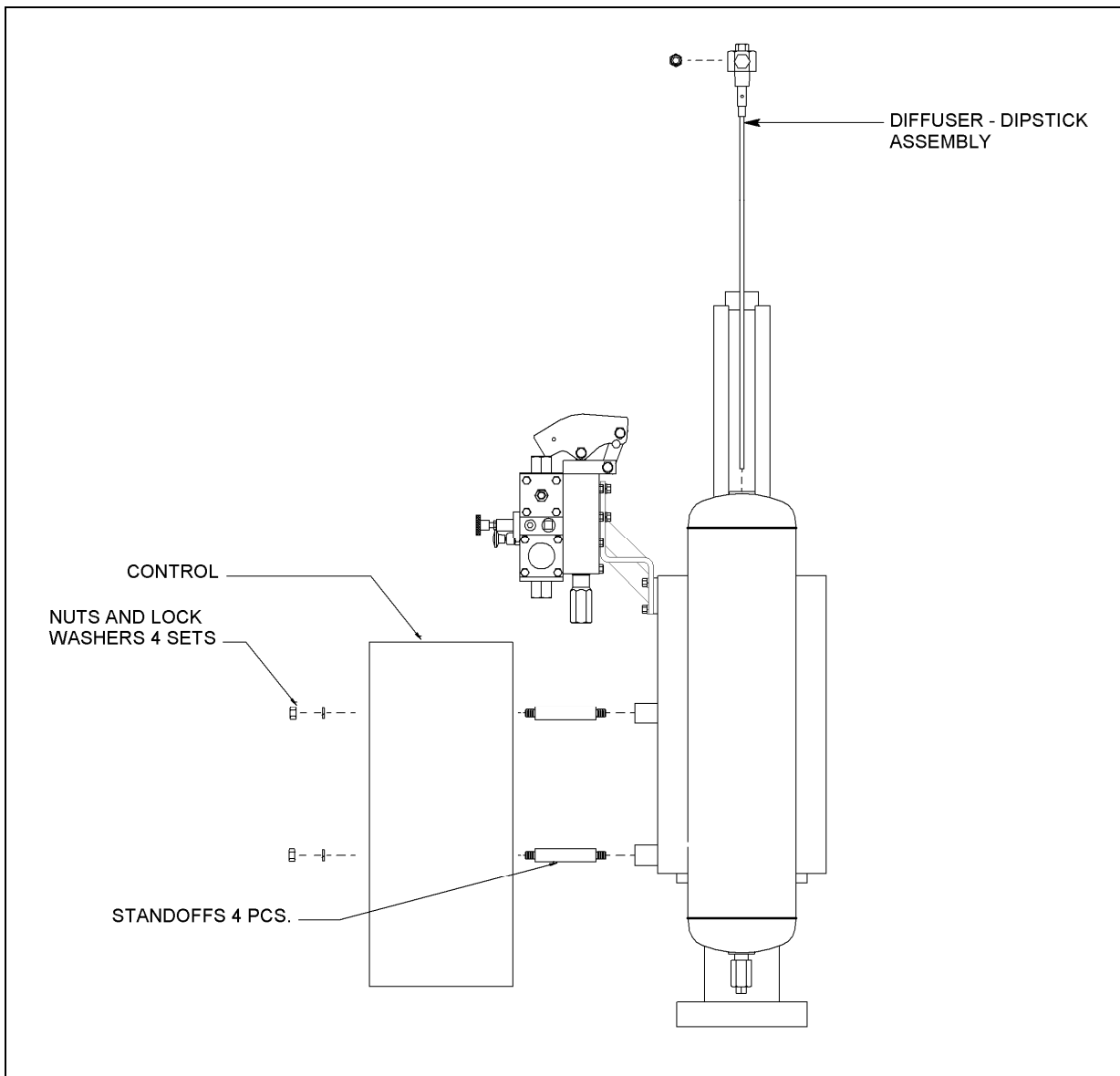


Figure 1: Install New Control

Install the New Control Box Assy.

The new control box mounts to the same holes in the bracket on the Actuator, as the old one, using 4" long standoffs. Look the new hardware over to enable identification of the parts.

1. Install the four standoffs to the mounting bracket. (See Figure 1)
2. Fasten Control with nuts and lock washers. (See Figure 1)
3. Assemble the dipsticks to the new Diffuser Assemblies. Apply an appropriate pipe sealant and install the Diffuser Assemblies in the top ports of the gas hydraulic tanks.

MOD L10: Replacement Procedure

Linear ActCont ER 2Way Gas

05-03-11

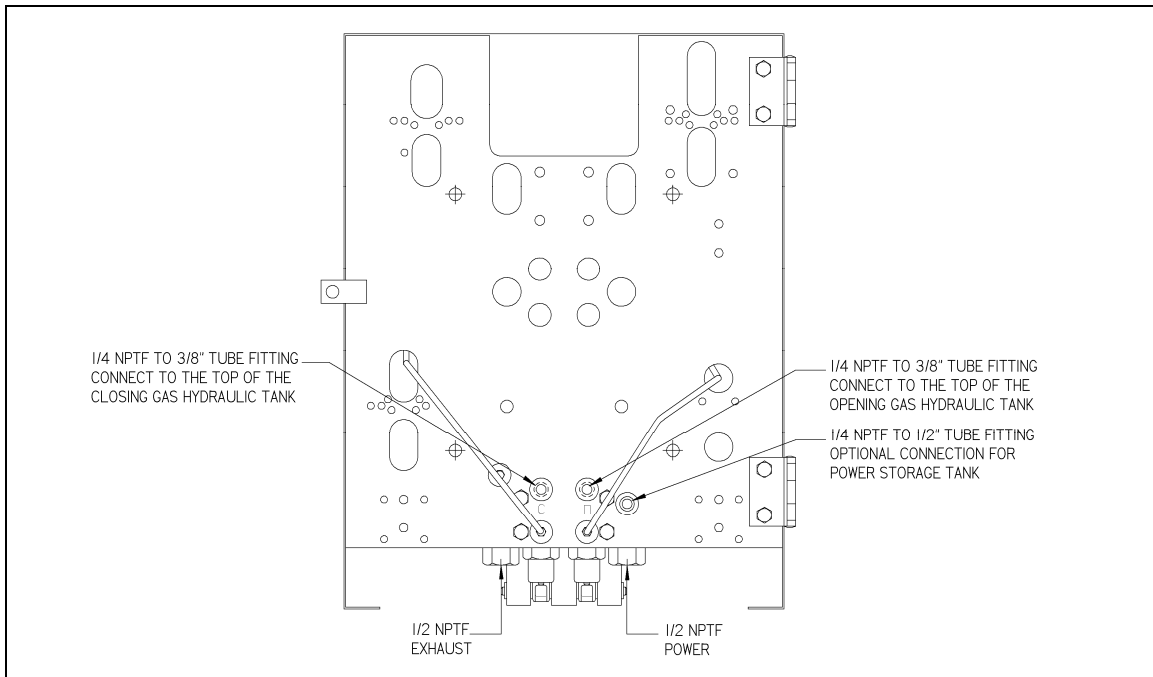
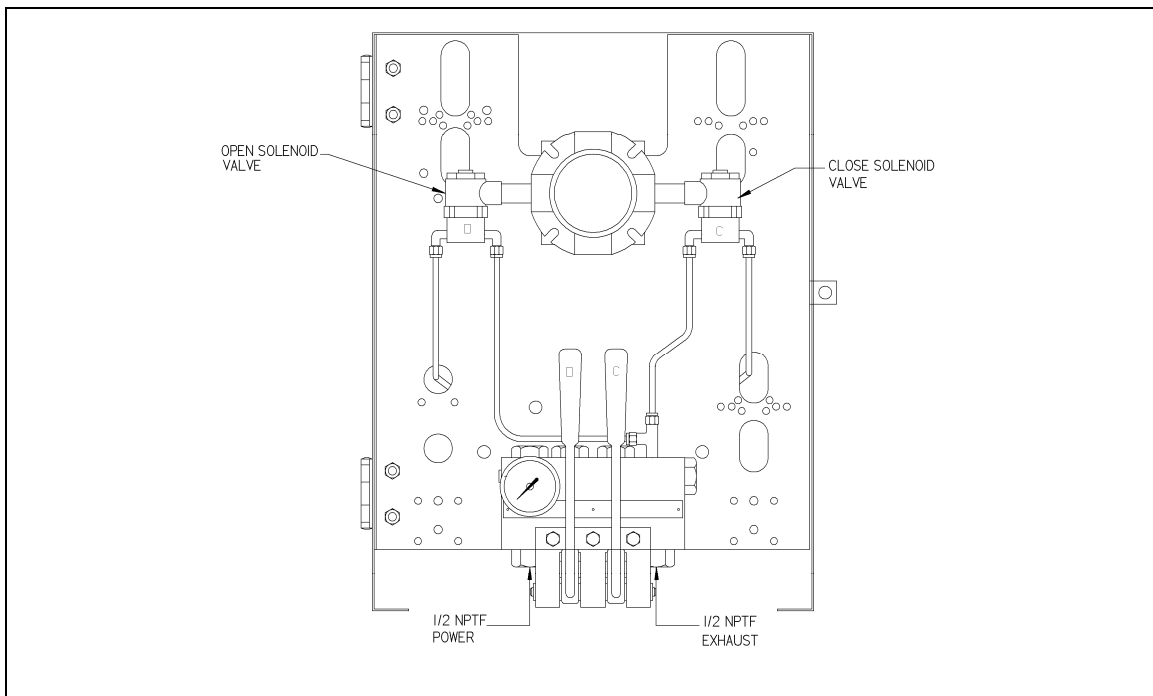


Figure 2: View of the New Control from the Back

4. Install new Swagelok® fittings in the back of the Control, top of the Gas Hydraulic Tanks, and Power Storage. Apply Teflon®- tape and an appropriate pipe sealant to the threads. (See Figures 2 and 3)



MOD L10: Replacement Procedure

Linear ActCont ER 2Way Gas

05-03-11

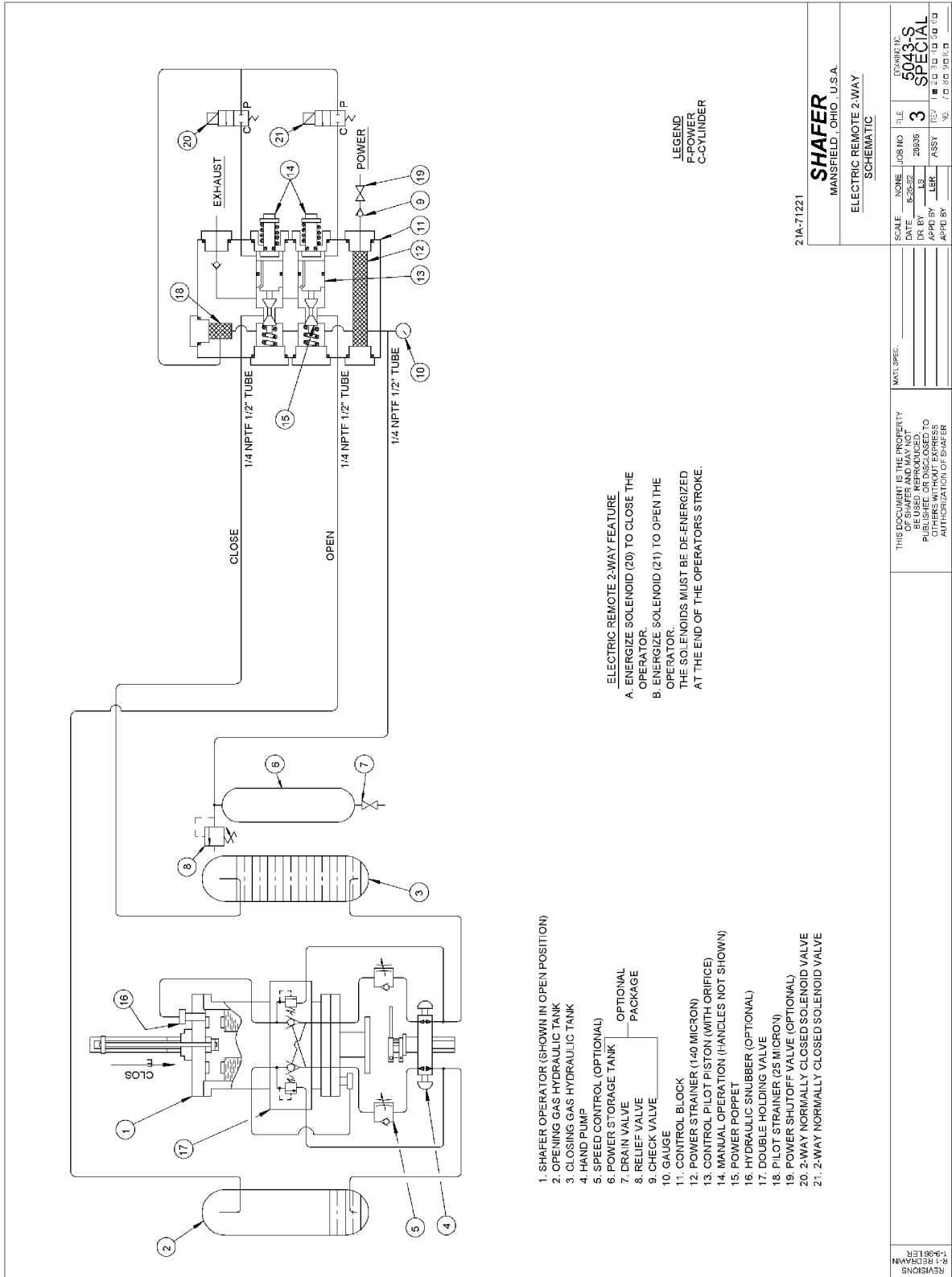
Figure 3: View of the New Control from the Front

5. Run 1/2" tube line from the Close port, on the back of the Control, to the top of the Close Tank [2]. (See Figure 2)
6. Run 1/2" tube line from the Open port, on the back of the Control, to the top of the Open Tank [1]. (See Figure 2)
7. Run 1/2" tube line from the power port, on the back of the Control, to the Power Storage Tank [27], if applicable. (See Figure 2)
8. Re-plumb the customer pilot connection, power connection and re-plumb the exhaust, or install muffler, on the poppet block control valve.
9. Check the oil level in the gas hydraulic tanks.

MOD L10: Replacement Procedure

Linear ActCont ER 2Way Gas with Linebreak

05-03-11



MOD L10: Replacement Procedure

Linear ActCont ER 2Way Gas with Linebreak

05-03-11

If any further information is required, please feel free to contact:

EMERSON PROCESS MANAGEMENT VALVE AUTOMATION, INC.

2500 Park Avenue West

Mansfield, Ohio 44906

Phone: (419) 529-4311

Fax (419) 529-3688

Please visit our website for up to date product data. www.shafervalve.com

All Rights Reserved

The contents of this publication are presented for informational purpose only, and while every effort has been made to ensure their accuracy, they are not to be construed as warranties or guarantees, express or implied, regarding the products or services described herein or their use or applicability. We reserve the right to modify or improve the designs or specifications of such products at any time with out notice.

Trademarks owned by other companies that are referred to in our product literature include: Swagelok® and Teflon®