

## Data sheet

Sheet No.: D89, Rev D, Page 1 of 2

Date: November 2011

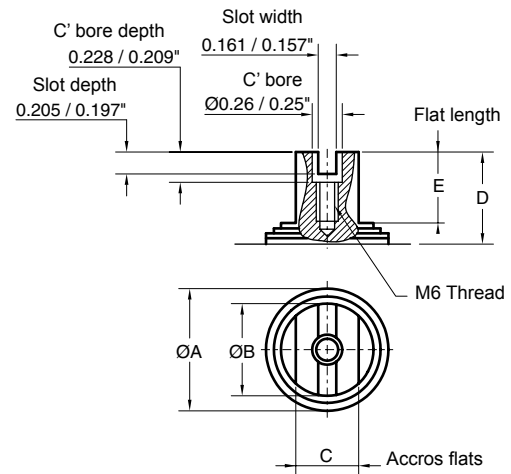
Hytork XL

# Top and Solenoid Mounting Details

## XL26 - XL4581 Imperial Actuators

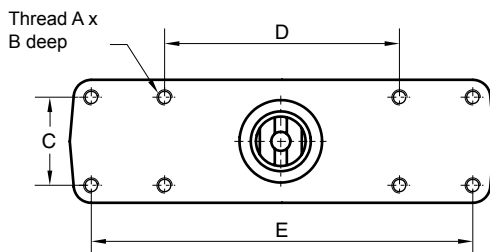
### Pinion top details VDI/VDE3845 (NAMUR)

Model	ØA	ØB	C	D	E
XL 26	0.969" / 0.965"	0.653" / 0.65"	0.551" / 0.545"	0.791" / 0.783"	0.646" / 0.63"
XL 71					
XL 131					
XL 186	1.201" / 1.181"	0.925" / 0.917"	0.669" / 0.663"		0.539" / 0.524"
XL 221					
XL 281	1.752" / 1.732"	1.713" / 1.705"	0.866" / 0.86"		1.185" / 1.177"
XL 426	2.539" / 2.52"	2.642" / 2.634"	1.417" / 1.411"		
XL 681	2.736" / 2.717"	2.815" / 2.807"	1.575" / 1.569"		
XL 1126	3.563" / 3.543"				0.713" / 0.705"
XL 1371					
XL 2586					
XL 4581					

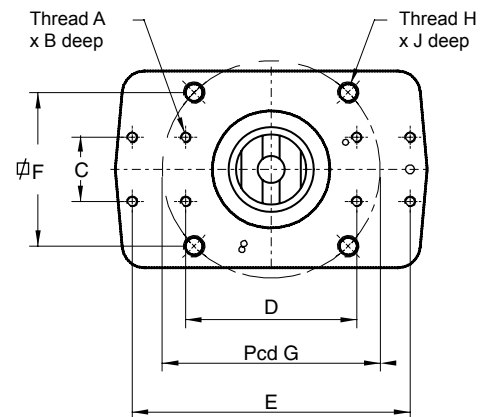


### Top Mounting details VDI/VDE3845 (NAMUR)

#### XL 26 - XL221



#### XL 281 - XL4581



Model	A unc	B	C	D	E	ISO	F	H	J	G
XL 26	No10 x 24	0.24"	1.18"	3.15"	-	-/-	-/-	-/-	-/-	-/-
XL 71	No10 x 24	0.24"	1.18"	3.15"	-	-/-	-/-	-/-	-/-	-/-
XL 131	No10 x 24	0.24"	1.18"	3.15"	5.12"	-/-	-/-	-/-	-/-	-/-
XL 186	No10 x 24	0.24"	1.18"	3.15"	5.12"	-/-	-/-	-/-	-/-	-/-
XL 221	No10 x 24	0.24"	1.18"	3.15"	5.12"	-/-	-/-	-/-	-/-	-/-
XL 281	No10 x 24	0.315"	1.18"	3.15"	5.12"	F07	1.95	5/16"-18	0.47	2.76
XL 426	No10 x 24	0.315"	1.18"	3.15"	5.12"	F10	2.84	3/8"-16	0.59	4.02
XL 681	No10 x 24	0.315"	1.18"	3.15"	5.12"	F10	2.84	3/8"-16"	0.59	4.02
XL 1126	No10 x 24	0.315"	1.18"	5.12"	-	F12	3.48	1/2"-13	0.71	4.92
XL 1371	No10 x 24	0.315"	1.18"	5.12"	-	F12	3.48	1/2"-13	0.71	4.92
XL 2586	No10 x 24	0.315"	1.18"	5.12"	-	F16	4.59	3/4"-10	0.79	6.50
XL 4581	No10 x 24	0.315"	1.18"	5.12"	-	F16	4.59	3/4"-10	0.79	6.50

**HYTORK**

www.Hytork.com

Copyright © Emerson Process Management. The information in this document is subject to change without notice.  
Updated data sheets can be obtained from our website [www.hytork.com](http://www.hytork.com) or from your nearest Valve Automation Center  
USA: +1 813 630 2255 (fax 630 9449) UK: +44 191 5180020 (fax 5180032)



**EMERSON**  
Process Management

# Data sheet

Sheet No.: D89, Rev D, Page 2 of 2  
 Date: November 2011

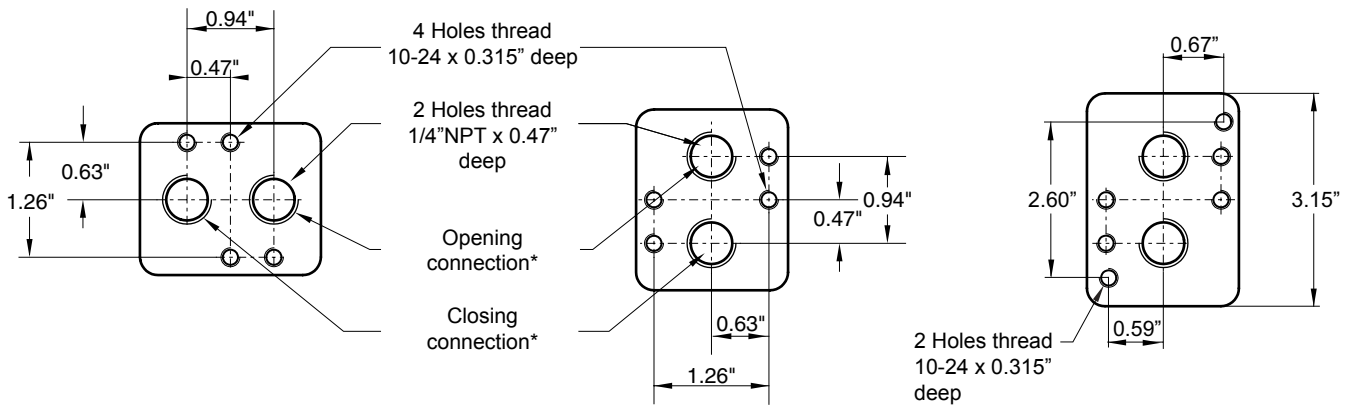
# Hytork XL

## NAMUR Solenoid Mounting details

### XL26 - XL221

### XL281 - XL4581

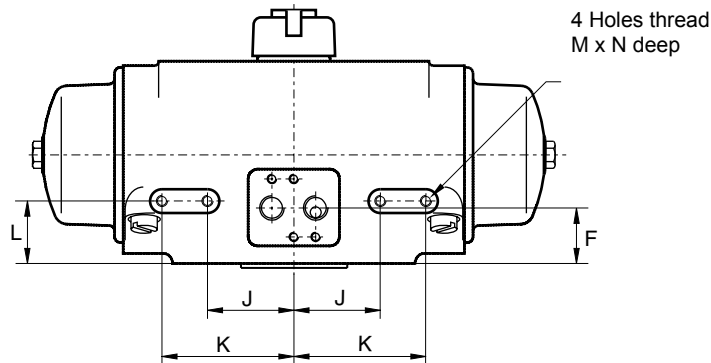
### Additional drilling pattern XL2586 & XL4581



**Note:**

\* "Opening" or "Closing" port operation, as shown, is for standard (Spring-to-Close) actuators. For reverse acting actuators (Spring-to-Open) the port operation is also reversed.

## Additional Front mounting patterns (XL26 to XL221)



Dimensions in inches						
Model	F	J	K	L	M	N
XL26	1.14	1.22	1.81	1.26	10-24	0.26
XL71	1.14	1.33	2.31	1.26	10-24	0.26
XL131	1.18	1.86	2.85	1.34	1/4"-20	0.26
XL186	1.18	2.41	3.40	1.34	1/4"-20	0.26
XL221	1.30	2.46	3.44	1.46	1/4"-20	0.26



www.Hytork.com

Copyright © Emerson Process Management. The information in this document is subject to change without notice. Updated data sheets can be obtained from our website [www.hytork.com](http://www.hytork.com) or from your nearest Valve Automation Center  
 USA: +1 813 630 2255 (fax 630 9449) UK: +44 191 5180020 (fax 5180032)

