

Data sheet

Sheet No.: D89, Rev B

Date: June 2005

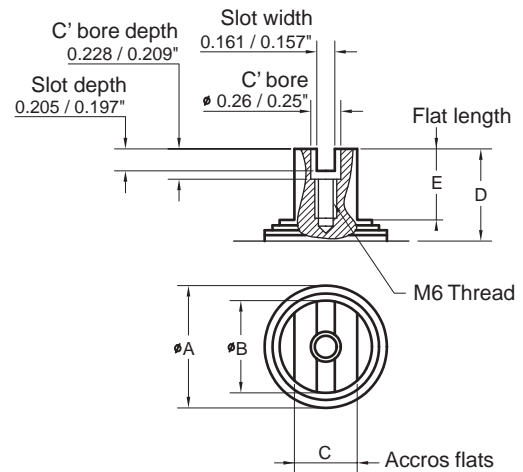
Hytork XL

VDI / VDE Top Mounting and Namur Details

XL26 - XL4581 Imperial Actuators

Pinion top details

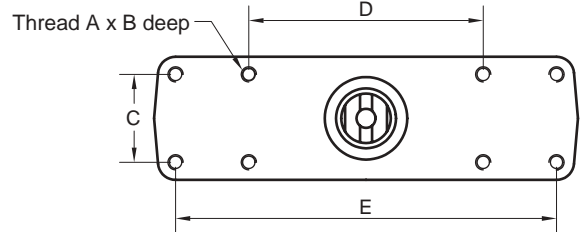
| Model | ØA | ØB | C | D | E |
|---------|--------------------|--------------------|--------------------|--------------------|--------------------|
| XL 26 | 0.969" / 0.965" | 0.653" / 0.650" | 0.551" / 0.545" | 0.79" / 0.78" | 0.645" / 0.630" |
| XL 71 | | | | | 0.540" / 0.523" |
| XL 131 | 0.540" / 0.523" | | | | |
| XL 186 | 0.540" / 0.523" | | | | |
| XL 221 | 1.20" / 1.18" | 0.925" / 0.917" | 0.670" / 0.663" | 0.79" / 0.78" | 0.496" / 0.489" |
| XL 281 | 1.75" / 1.73" | | | | 0.496" / 0.489" |
| XL 426 | 2.54" / 2.52" | 1.713" / 1.705" | 0.866" / 0.860" | 1.185" / 1.177" | 0.712" / 0.705" |
| XL 681 | 2.52" / 2.52" | 1.705" / 1.705" | 0.860" / 0.860" | | 0.712" / 0.705" |
| XL 1126 | 3.56" / 3.54" | 2.642" / 2.634" | 1.417" / 1.411" | 1.185" / 1.177" | 0.712" / 0.705" |
| XL 1371 | | | 1.411" / 1.411" | | |
| XL 2586 | | | 1.575" / 1.569" | | |
| XL 4581 | | | 1.569" / 1.569" | | |



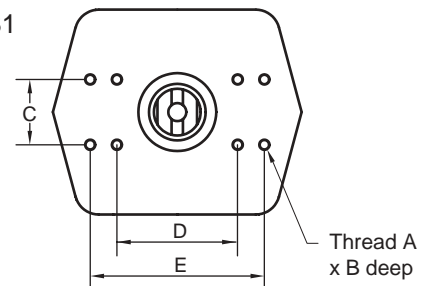
VDI / VDE Top Mounting details

| Model | A unc | B | C | D | E |
|---------|-----------|--------|-------|-------|-------|
| XL 26 | No10 x 24 | 0.24" | 1.18" | 3.15" | - |
| XL 71 | No10 x 24 | 0.24" | 1.18" | 3.15" | - |
| XL 131 | No10 x 24 | 0.24" | 1.18" | 3.15" | 5.12" |
| XL 186 | No10 x 24 | 0.24" | 1.18" | 3.15" | 5.12" |
| XL 221 | No10 x 24 | 0.24" | 1.18" | 3.15" | 5.12" |
| XL 281 | No10 x 24 | 0.315" | 1.18" | 3.15" | 5.12" |
| XL 426 | No10 x 24 | 0.315" | 1.18" | 3.15" | 5.12" |
| XL 681 | No10 x 24 | 0.315" | 1.18" | 3.15" | 5.12" |
| XL 1126 | No10 x 24 | 0.315" | 1.18" | 5.12" | - |
| XL 1371 | No10 x 24 | 0.315" | 1.18" | 5.12" | - |
| XL 2586 | No10 x 24 | 0.315" | 1.18" | 5.12" | - |
| XL 4581 | No10 x 24 | 0.315" | 1.18" | 5.12" | - |

XL 26 - XL221

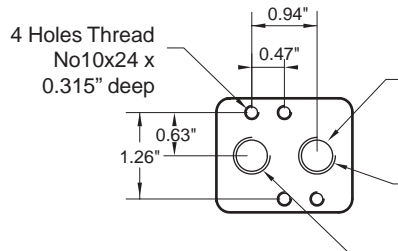


XL 281 - XL4581

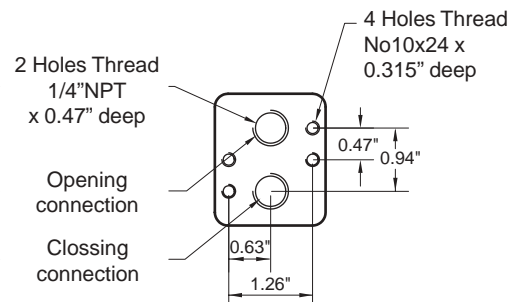


NAMUR Solenoid Mounting details

XL26 to XL221



XL281 to XL4581



www.Hytork.com

Copyright © Emerson Process Management. The information in this document is subject to change without notice. Updated data sheets can be obtained from our website www.hytork.com or from your nearest Valve Automation Center
 USA: +1 813 630 2255 (fax 630 9449) UK: +44 191 5180020 (fax 5180032)



EMERSON
 Process Management