

Data sheet

Sheet No.: D88, Rev D

Date: June 2005

Hytorc XL

Standard Drive & Bottom Mounting Details

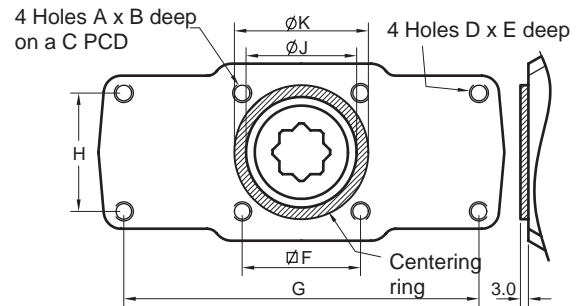
XL26 - XL4581 Imperial Actuators

Basic Bottom Mounting Details

Model	ISO	A unc	B	C	D unc	E
XL 26	F05	1/4"	0.35"	1.97"	1/4"	0.35"
XL 71	F07	5/16"	0.47"	2.76"	5/16"	0.47"
XL 131	F07	5/16"	0.47"	2.76"	5/16"	0.47"
XL 186	F07	5/16"	0.47"	2.76"	5/16"	0.47"
XL 221	F07	5/16"	0.47"	2.76"	5/16"	0.47"

Model	F	G	H	ØJ	ØK
XL 26	1.39"	3.54"	1.39"	1.09"	1.376/1.375"
XL 71	1.95"	4.49"	1.95"	1.81"	2.164/2.162"
XL 131	1.95"	4.49"	1.95"	1.81"	2.164/2.162"
XL 186	1.95"	4.49"	1.95"	1.81"	2.164/2.162"
XL 221	1.95"	4.49"	1.95"	1.81"	2.164/2.162"

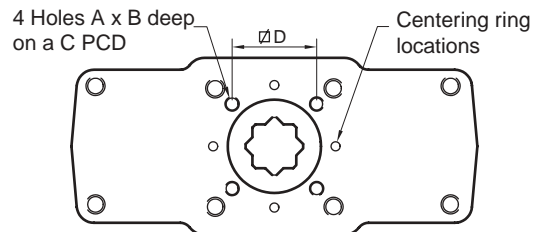
Models shown with optional Centering Ring fitted



Additional Bottom Mounting Details

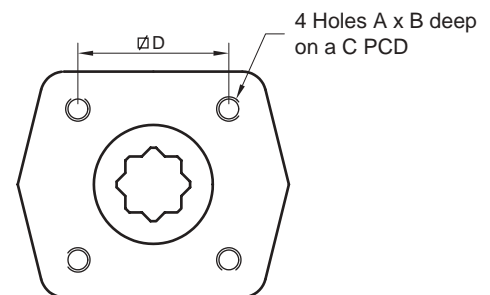
Model	ISO	A unc	B	C	D
XL 26	F03	No10 x 24	0.32"	1.42"	1.00"
XL 71	F05	1/4"	0.35"	1.97"	1.39"
XL 131	F05	1/4"	0.35"	1.97"	1.39"

Models shown with optional Centering Ring removed to reveal additional ISO mounting holes.



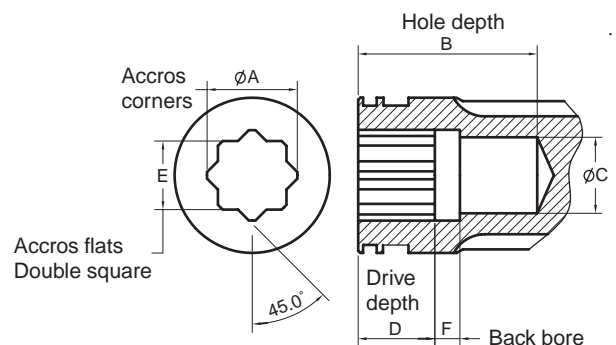
Basic Bottom Mounting Details

Model	ISO	A unc	B	C	D
XL 281	F07	5/16"	0.47"	2.76"	1.95"
XL 426	F10	3/8"	0.59"	4.02"	2.84"
XL 681	F10	3/8"	0.59"	4.02"	2.84"
XL 1126	F12	1/2"	0.71"	4.92"	3.48"
XL 1371	F12	1/2"	0.71"	4.92"	3.48"
XL 2586	F16	3/4"	0.79"	6.50"	4.59"
XL 4581	F16	3/4"	0.98"	6.50"	4.59"



Standard Drive Details

Model	ISO	A	B	ØC	D	E	F
XL 26	F05	0.71"	1.1"	0.58"	0.630"	0.551/0.555"	0.09"
XL 71	F07	0.87"	1.8"	0.7"	0.748"	0.669/0.673"	0.09"
XL 131	F07	0.87"	1.8"	0.7"	0.748"	0.669/0.673"	0.09"
XL 186	F07	0.87"	1.8"	0.7"	0.748"	0.669/0.673"	0.09"
XL 221	F07	0.87"	1.8"	0.7"	0.748"	0.669/0.673"	0.09"
XL 281	F07	0.87"	1.8"	0.7"	0.748"	0.669/0.673"	0.09"
XL 426	F10	1.11"	2.3"	0.9"	0.945"	0.866/0.871"	1.18"
XL 681	F10	1.11"	2.3"	0.9"	0.945"	0.866/0.871"	1.18"
XL 1126	F12	1.43"	2.8"	1.1"	1.142"	1.063/1.068"	1.00"
XL 1371	F12	1.43"	2.8"	1.1"	1.142"	1.063/1.068"	1.00"
XL 2586	F16	2.37"	3.9"	1.9"	1.890"	1.811/1.817"	1.38"
XL 4581	F16	2.37"	3.9"	1.9"	1.890"	1.811/1.817"	1.38"



HYTORK

www.Hytork.com

Copyright © Emerson Process Management. The information in this document is subject to change without notice.

Updated data sheets can be obtained from our website www.hytork.com or from your nearest Valve Automation Center

USA: +1 813 630 2255 (fax 630 9449) UK: +44 191 5180020 (fax 5180032)



EMERSON
Process Management