

Data sheet

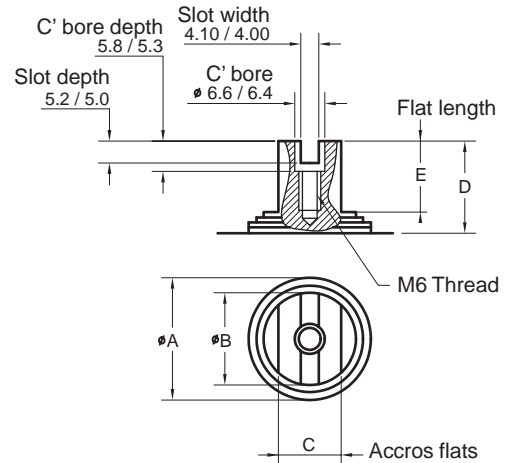
Sheet No.: D86, Rev B
Date: June 2005

Hytorc XL

VDI / VDE Top Mounting and Namur Details XL26 - XL4581 Metric Actuators

Pinion top details

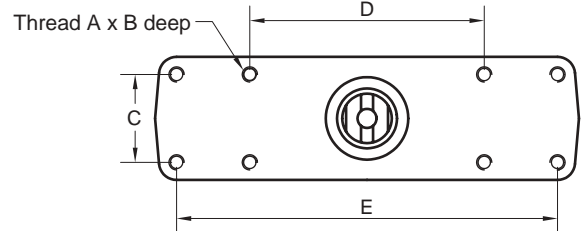
Model	ØA	ØB	C	D	E
XL 26	24.6/24.5	16.6/16.5	14.00/13.85	20.1/19.9	16.4/16.0
XL 71	24.6/24.5	16.6/16.5	14.00/13.85	20.1/19.9	16.4/16.0
XL 131	24.6/24.5	16.6/16.5	14.00/13.85	20.1/19.9	16.4/16.0
XL 186	30.5/30.0	16.6/16.5	14.00/13.85	20.1/19.9	13.7/13.3
XL 221	30.5/30.0	16.6/16.5	14.00/13.85	20.1/19.9	13.7/13.3
XL 281	44.5/44.0	23.5/23.3	17.00/16.85	20.1/19.9	12.6/12.4
XL 426	64.5/64.0	43.5/43.3	22.00/21.85	20.1/19.9	12.6/12.4
XL 681	69.5/69.0	43.5/43.3	22.00/21.85	20.1/19.9	12.6/12.4
XL 1126	90.5/90.0	67.1/66.9	36.00/35.85	30.1/29.9	18.1/17.9
XL 1371	90.5/90.0	67.1/66.9	36.00/35.85	30.1/29.9	18.1/17.9
XL 2586	95.5/95.0	71.5/71.3	40.00/39.85	30.1/29.9	18.1/17.9
XL 4581	95.5/95.0	71.5/71.3	40.00/39.85	30.1/29.9	18.1/17.9



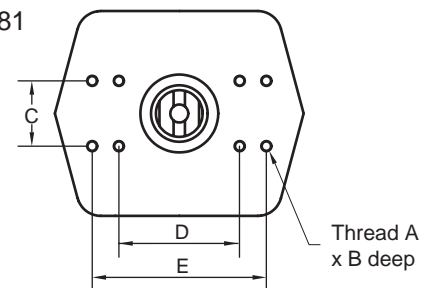
VDI / VDE Top Mounting details

Model	A	B	C	D	E
XL 26	M5	6.25	30.0	80.0	-
XL 71	M5	6.25	30.0	80.0	-
XL 131	M5	6.25	30.0	80.0	130.0
XL 186	M5	6.25	30.0	80.0	130.0
XL 221	M5	6.25	30.0	80.0	130.0
XL 281	M5	8.0	30.0	80.0	130.0
XL 426	M5	8.0	30.0	80.0	130.0
XL 681	M5	8.0	30.0	80.0	130.0
XL 1126	M5	8.0	30.0	130.0	-
XL 1371	M5	8.0	30.0	130.0	-
XL 2586	M5	8.0	30.0	130.0	-
XL 4581	M5	8.0	30.0	130.0	-

XL 26 - XL221

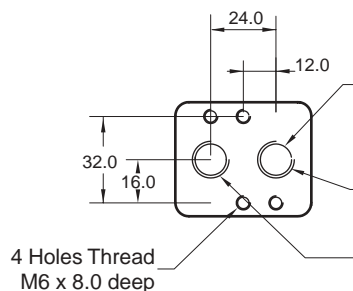


XL 281 - XL4581

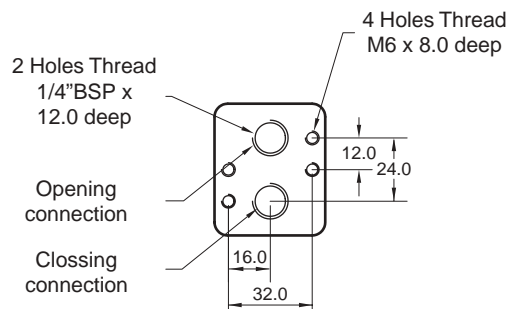


NAMUR Solenoid Mounting details

XL26 to XL221



XL281 to XL4581



www.Hytorc.com

Copyright © Emerson Process Management. The information in this document is subject to change without notice.
Updated data sheets can be obtained from our website www.hytorc.com or from your nearest Valve Automation Center
USA: +1 813 630 2255 (fax 630 9449) UK: +44 191 5180020 (fax 5180032)



EMERSON
Process Management