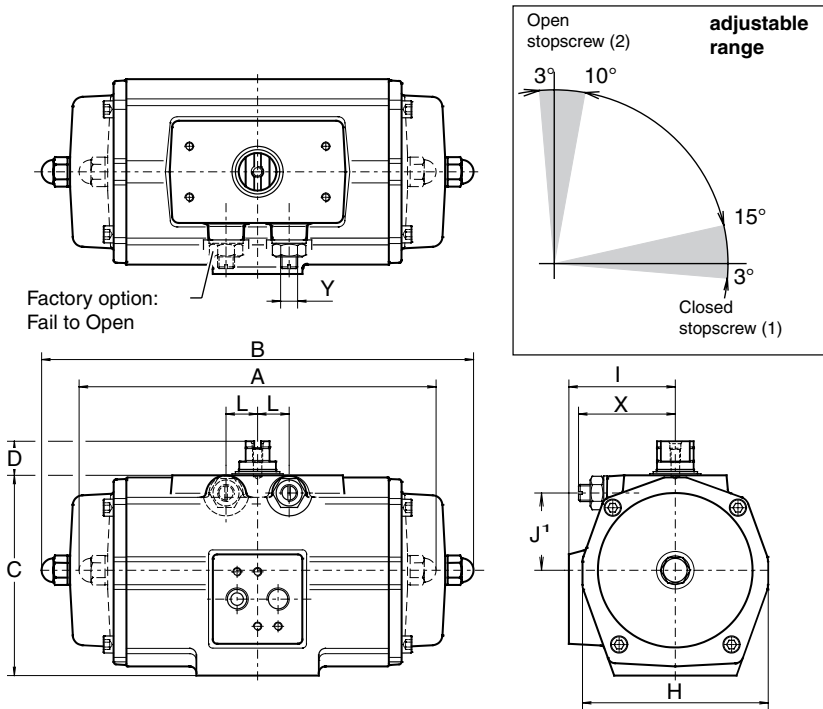


# Data sheet

Sheet No.: A1.501.05 Rev. A  
Date: November 2009

## EL-O-MATIC ACTUATOR WITH DOUBLE STROKE ADJUSTMENT

DSA



### Description

Actuators with double stroke adjustment are normally used for high performance butterfly valves where a fine adjustment is required for the closed position. In this version adjustment is provided at the end of the opening and closing stroke positions. DSA actuators may be double acting or spring return, though are normally used as spring return (fail close) actuators.

### Operation

The closed position is adjusted by means of the stop-screw (1) located in the actuator body and for the open position by the stop-screws (2) in the actuator end caps.

### Identification

See data sheet A1.102.10

### Specification

Pressure : Up to 120 psi  
 Operating media : Air, dry or lubricated or non-corrosive gas  
 Torque (90°) : Data sheet A1.104.01 - A1.104.02  
 Rotation -  
 - Spring return : Clock-wise on air failure.  
 - Double acting : Counter clock-wise with port "A" pressurised.  
 Other dimensions : Data sheet A1.103.XXX  
 Temperature : -4° to +176° F  
 Adjustable range : Closed position (1), -3° - 15°  
                           Open position (2), 80° - 93°

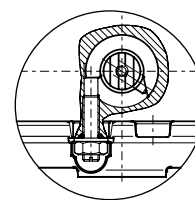
### Note

- 1) Can be provided with extra long end-cap stop screws for full range adjustment of the "open" position.
- 2) This DSA option is not required on actuators fitted with manual override gearboxes, as MO gearboxes already incorporate this function.

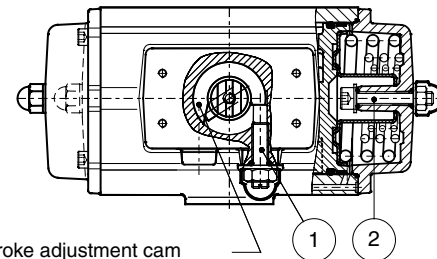
### Important

- 1) "Fail open" is factory option.
- 2) When assembled for "fail open" operation (code D; see data sheet A1.504), both stop-screws (1) and (2) will adjust the closed position. There is no adjustment for the open position!

Dim. in inch.	Actuator type									
	E25	E40	E65	E100	E150	E200	E350	E600	E950	E1600
<b>A DA</b>	6.26	7.09	7.83	8.70	10.00	11.14	12.01	15.35	17.32	20.47
<b>B SR</b>	6.77	8.03	9.80	10.51	12.20	14.17	15.24	18.90	20.94	25.24
<b>C</b>	3.15	3.66	4.13	4.65	5.51	5.63	7.13	8.66	10.20	11.69
<b>D</b>	0.79	0.79	0.79	0.79	0.79	0.79	0.79	1.18	1.18	1.18
<b>H</b>	2.91	3.39	3.86	4.25	4.76	5.04	6.81	8.15	9.09	264.00
<b>I</b>	1.81	2.01	2.26	2.48	2.76	2.87	3.71	4.45	4.96	5.59
<b>J1</b>	1.11	1.38	1.57	1.72	1.92	2.12	2.85	3.50	4.03	4.50
<b>L</b>	0.45	0.61	0.61	0.73	0.97	0.97	0.97	1.63	1.63	1.87
<b>Y</b>	1/4"-20	5/16"-18	5/16"-19	3/8"-16	3/8"-16	1/2"-13	1/2"-13	5/8"-11	5/8"-11	3/4"-10
<b>X</b>	1.42	1.63	1.63	1.99	2.36	2.46	2.85	4.02	4.02	4.31
<b>X max.</b>	1.63	1.91	1.91	2.30	2.64	2.91	3.31	4.51	4.51	4.88



Factory option:  
"Fail open"



Stroke adjustment cam

**EL-O-MATIC™**

www.El-O-matic.com

Copyright © Emerson Process Management. The information in this document is subject to change without notice.

Updated data sheets can be obtained from our website [www.El-O-Matic.com](http://www.El-O-Matic.com) or from your nearest Valve Automation Center **USA:** +1 813 319 0266 **Europe:** +31 74 256 10 10 **Asia-Pacific:** +65 6501 4600

**EMERSON™**  
Process Management