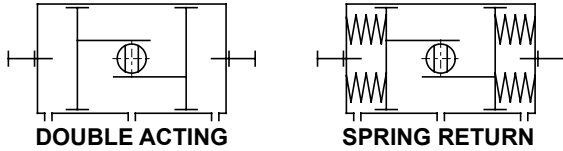


Data sheet

Sheet No.: A1.501.01 Rev. A
Date: November 2009

EL-O-MATIC ACTUATOR WITH ONE WAY LIMIT STOPS

L1/LF



Dim. in inch	ACTUATOR TYPE	
	P2500	P4000
A	22.8	27.9
B	31.3	45.4
C	14.0	15
D	1.2	1.2

Description

Actuators with one way adjustable limit stops are used where the maximum opening (or closing) position of the valve needs to be reduced. For instance to adjust the maximum capacity of a remote operated valve.

Also actuators with 180° rotation are available with these stops.

Operation

Stop screws are fitted to both endcaps and the screw length is such that adjustment is possible through the specified rotation of the actuator.

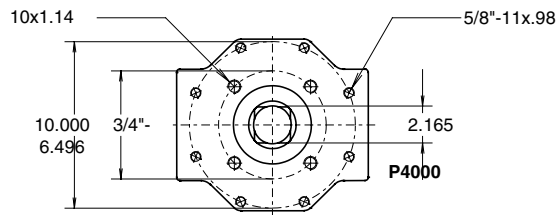
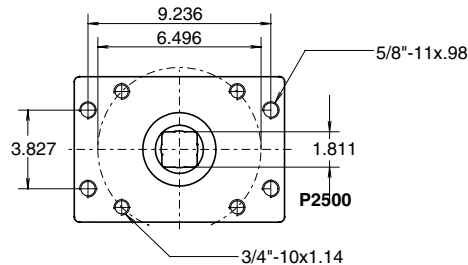
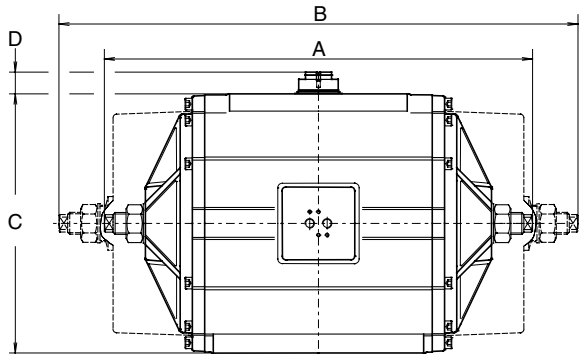
The modified endcap is machined for -0.5° to +93° rotation for all P-series models.

Identification

"L1" is added to the basic part number i.e. PD2500-L1

Specification:

Pressure : Up to 120 PSI
 Media : Air, dry or lubricated or non-corrosive gas
 Torque (90°) : Data sheet A1.104.01 - A1.104.04
 (180°) : Data sheet P-series A1.204.01 and A1.204.02
 Other dimensions : Data sheet A 1.103.XXX (90°)
 : Data sheet A 1.203.011 (180°)
 Temperature : -4.0° to +176°F
 Adjustable range : 80°-93°(90°) or 160°-186° (180°)

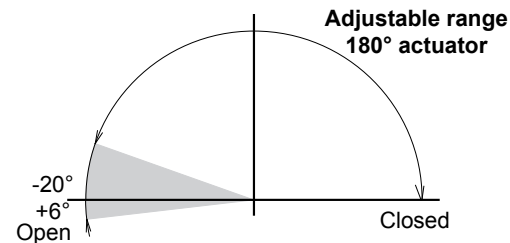
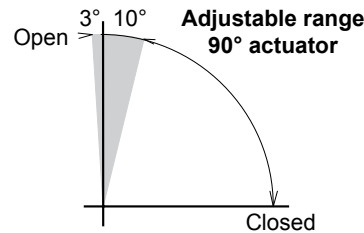


Adjustable position (see data sheet A1.503 or A1.504)

code	position	
A	Valve open	(spring to close)
B	Valve open	(spring to close)
C	Valve closed	(spring to open)
D	Valve closed	(spring to open)

Note:

- Can be provided with extra long screws for full range adjustment (identification: PD2500-LF)
- This option in combination of a manual override gearbox is redundant



Note: Do not adjust under pressure

EL-O-MATIC™

www.El-O-matic.com

Copyright © Emerson Process Management. The information in this document is subject to change without notice.

Updated data sheets can be obtained from our website www.El-O-Matic.com or from your nearest Valve Automation Center **USA:** +1 813 319 0266 **Europe:** +31 74 256 10 10 **Asia-Pacific:** +65 6501 4600

EMERSON™
Process Management