

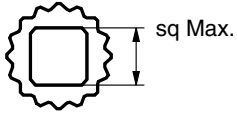
Data sheet

Sheet No.: A1.103.200 Rev. C
Date: August 2011

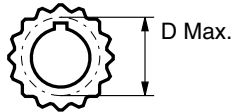
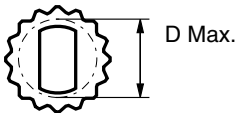
DRIVE INSERTS FOR EL-O-MATIC ACTUATORS

E

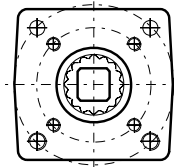
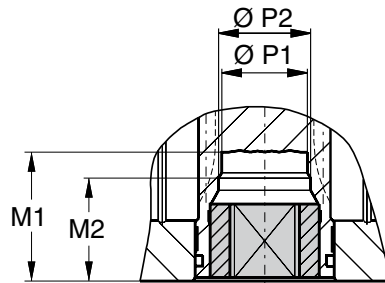
Standard available insert shapes



Optional available insert shapes



Insert mounting acc. ISO 5211



Description

Most of the EI-O-Matic actuators are fitted with drive inserts. This enables actuators to be directly mounted onto suitable valves and eliminates the need for a bracket and coupling type mounting kit. The use of direct mounts significantly cuts the cost of the valve/actuator assembly.

Standard actuators are fitted with square drive inserts in accordance with ISO 5211 (or DIN 3337), but a wide variety of other inserts are also available. Special inserts may have oversize or undersize squares, double-D and shaft key way forms.

Drive inserts can be supplied on factory built actuators or as loose items and are easily replaceable at distributor or end user level.

Where direct mounts are not possible, for instance on valves with exposed grand packing, the use of inserts often simplifies the design of the mounting kit.

Material : Aluminum alloy
Finish : Anodized

The following actuator types do not have inserts.

- E12,
- P2500 and P4000
- 180° actuators

These actuators have inner square directly in the bottom of the pinion. See the following data sheets for more information :

E12	ISO5211	A1.103.102
P2500/P4000	ISO 5211	A1.103.106
180°	ISO 5211	A1.203.011

Standard inserts with inner-square-dimensions per actuator type									
	E25	E40 / E65	E100	E150	E200	E350	E600	E950	E1600
	0.433	0.551	0.748	0.748	0.866	1.063	1.063	1.417	1.811
Optional insert dimensions									
	0.354	0.394	0.472	0.551	0.551	0.551	0.551	0.866	
	0.394	0.472	0.551	0.630	0.630	0.630	0.630		
			0.63	0.669	0.669	0.669	0.669		
				0.866	0.748	0.748	0.748		
				0.945	0.945	0.866	0.866		
				1.063	1.063	0.945	0.945		
Maximum insert dimensions									
M1	1.36	1.36	1.36	1.97	1.97	1.97	2.05	2.52	3.23
M2	-	-	1.06	1.46	1.46	1.46	-	-	-
P1	0.71	0.71	0.91	1.26	1.26	1.26	1.44	1.91	2.38
P2	-	-	0.99	1.43	1.43	1.43	-	-	-
SQ max.	0.630	0.630	0.748	1.063	1.063	1.063	1.063	1.417	1.811
D max.	0.827	0.827	0.929	1.323	1.323	1.323	1.323	1.772	2.362



www.El-O-matic.com

Copyright © Emerson Process Management. The information in this document is subject to change without notice.

Updated data sheets can be obtained from our website www.El-O-Matic.com or from your nearest Valve Automation Center **USA:** +1 813 319 0266 **Europe:** +31 74 256 10 10 **Asia-Pacific:** +65 6501 4600



EMERSON
Process Management