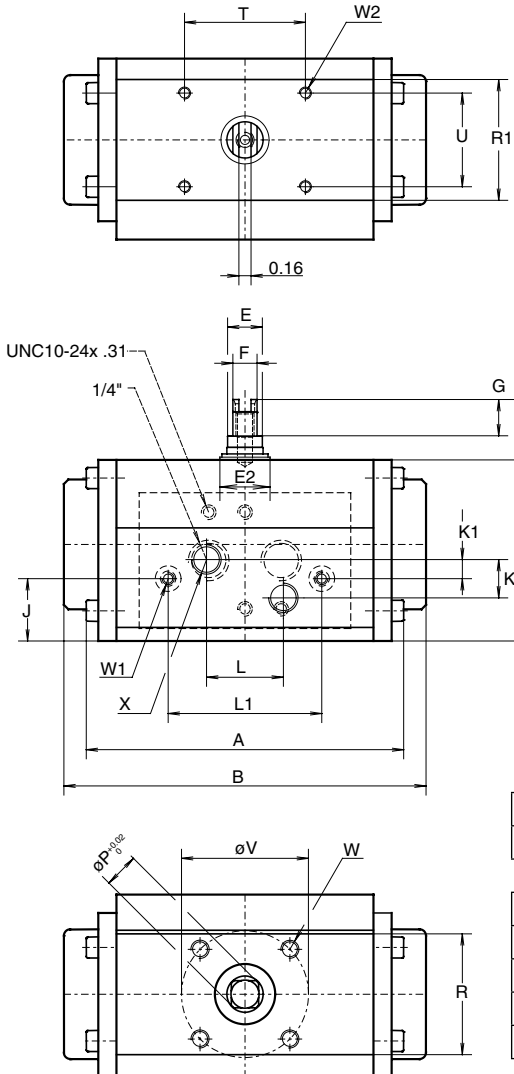


# Data sheet

Sheet No.: A1.103.102 Rev. A  
Date: November 2009

## DIMENSION SHEET ACTUATOR ISO E12 (90°/180°)



### DOUBLE ACTING TORQUE (ED)

Pressure	psi	40	50	60	70	80	90	100	120
Torque 90°/180°	(in.lb.)	59	74	89	104	119	134	149	179

### SINGLE ACTING TORQUE (ES)

Pressure	psi	Air stroke						Spring stroke	
		60		80		100		start	end
Position	-	start	end	start	end	start	end	start	end
Torque 90°	(in.lb.)	48	23	80	55	112	87	64	41
Torque 180°	(in.lb.)	49	25	81	57	112	88	63	40

Dim. in Inches	90°	180°
A ED	4.06	6.10
B ES	4.65	8.50
C	2.36	2.36
D	0.79	0.79
E	0.63	0.63
E2	0.91	0.91
F	0.39	0.39
G	0.47	0.47
H	2.36	2.36
I	1.30	1.30
J	0.83	0.83
K	0.50	0.50
K1	0.25	0.25
L	1.00	1.00
L1	2.00	2.00
M	0.65	0.65
N	0.039	0.039
Omax.	0.358	0.358
Omin.	0.354	0.354
P	0.476	0.476
R	1.57	1.57
R1	1.57	1.57
T	1.57	1.57
U	1.22	1.22
V	1.654	1.654
W	10-24 UNCx.24"	10-24 UNCx.24"
W1	10-24 UNCx.24"	10-24 UNCx.24"
W2	10-24 UNCx.24"	10-24 UNCx.24"
X	1/8"NPT	1/8"NPT
Y	M6x.48	M6x.48

**EL-O-MATIC™**

www.El-O-matic.com

Copyright © Emerson Process Management. The information in this document is subject to change without notice.

Updated data sheets can be obtained from our website [www.El-O-Matic.com](http://www.El-O-Matic.com) or from your nearest Valve Automation Center **USA:** +1 813 319 0266 **Europe:** +31 74 256 10 10 **Asia-Pacific:** +65 6501 4600

**EMERSON™**  
Process Management