

Data sheet

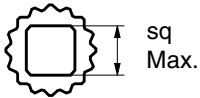
Sheet No.: 1.103.200 Rev. B

Date: January 2012

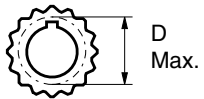
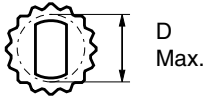
DRIVE INSERTS FOR EL-O-MATIC ACTUATORS

E

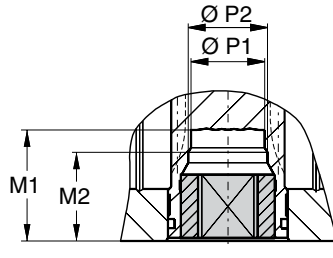
Standard available insert shapes



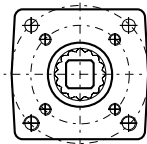
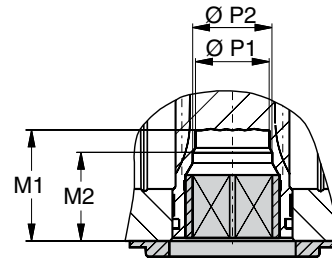
Optional available insert shapes



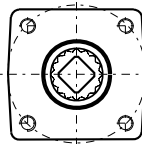
Insert mounting acc. ISO 5211



Insert mounting acc. DIN 3337



Centering plate



Description

Most of the EI-O-Matic actuators are fitted with drive inserts. This enables actuators to be directly mounted onto suitable valves and eliminates the need for a bracket and coupling type mounting kit. The use of direct mounts significantly cuts the cost of the valve/actuator assembly.

Standard actuators are fitted with square drive inserts in accordance with ISO 5211 (or DIN 3337), but a wide variety of other inserts are also available. Special inserts may have oversize or undersize squares, double-D and shaft key way forms.

Drive inserts can be supplied on factory built actuators or as loose items and are easily replaceable at distributor or end user level.

Where direct mounts are not possible, for instance on valves with exposed grand packing, the use of inserts often simplifies the design of the mounting kit.

Material : Aluminium alloy

Finish : Anodised

The following actuator types do not have inserts.

- E12,
- P2500 and P4000
- 180° actuators

These actuators have inner square directly in the bottom of the pinion.

See the following data sheets for more information :

E12 ISO5211 1.103.102
 DIN 3337 1.103.103

P2500/P4000 DIN 3337 1.103.073
 ISO 5211 1.103.106

180° DIN 3337 1.203.011
 ISO 5211 1.203.021

Dim. in mm	Inserts with inner-square-dimensions per actuator type								
	E25	E40 / E65	E100	E150	E200	E350	E600	E950	E1600
Standard inserts dimensions									
ISO5211	11	14	19	19	22	27	27	36	46
DIN3337	11	14	17	17	22	22	27	36	46
Optional insert dimensions									
	9	10	12	14	14	14	14	22	-
	10	12	14	16	16	16	16	-	-
	-	-	16	22	17	17	17	-	-
	-	-	-	24	19	19	19	-	-
	-	-	-	27	24	24	24	-	-
Maximum insert dimensions									
M1	34.5	34.5	34.5	50	50	50	52	64	82
M2	-	-	27	-	37	37	-	-	-
P1	14.1	18.1	23.1	28.5	32.1	32.1	36.5	48.5	60.5
P2	-	-	25.2	-	36.2	36.2	-	-	-
Sq max.	11	16	19	27	27	27	27	36	46
D max.	13.8	21	23.6	33.6	33.6	33.6	33.6	45	60

EL-O-MATIC™

www.El-O-matic.com

Copyright © Emerson Process Management. The information in this document is subject to change without notice.

Updated data sheets can be obtained from our website www.El-O-matic.com or from your nearest Valve Automation Center **USA:** +1 813 319 0266 **Europe:** +31 74 256 10 10 **Asia-Pacific:** +65 6501 4600



EMERSON™
Process Management