

Subject to change without notice

VALVE AUTOMATION SYSTEMS

EL-O-MATIC<sup>®</sup>  
w w w . e l - o - m a t i c . c o m

All rights reserved

A 1.103.200

Febr. '06

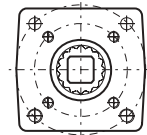
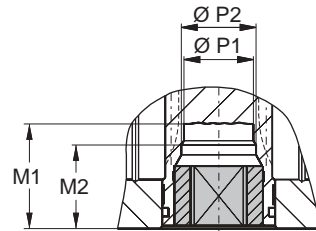
**Standard available insert shapes**



**Optional available insert shapes**



**Insert mounting acc. ISO 5211**



**Description**

Most of the El-O-Matic actuators are fitted with drive inserts. This enables actuators to be directly mounted onto suitable valves and eliminates the need for a bracket and coupling type mounting kit. The use of direct mounts significantly cuts the cost of the valve/actuator assembly.

Standard actuators are fitted with square drive inserts in accordance with ISO 5211 (or DIN 3337), but a wide variety of other inserts are also available. Special inserts may have oversize or undersize squares, double-D and shaft key way forms.

Drive inserts can be supplied on factory built actuators or as loose items and are easily replaceable at distributor or end user level.

Where direct mounts are not possible, for instance on valves with exposed grand packing, the use of inserts often simplifies the design of the mounting kit.

Material : Aluminum alloy  
Finish : Anodized

The following actuator types do not have inserts.

- E12,
- P2500 and P4000
- 180° actuators.

These actuators have inner square directly in the bottom of the pinion. See the following data sheets for more information :

E12	ISO5211	A 1.103.102
P2500/P4000	ISO 5211	A 1.103.106
180°	ISO 5211	A 1.203.011

Dim. in Inches	Inserts with inner-square-dimensions per actuator type						
	E40 / E65	E100	E200	E350	E600	E950	E1600
<b>Standard inserts dimensions</b>							
ISO5211	0.551	0.748	0.866	1.063	1.063	1.417	1.811
DIN3337	0.551	0.669	0.866	0.866	1.063	1.417	1.811
<b>Optional insert dimensions</b>							
	0.394	0.472	0.551	0.551	0.551	0.866	-
	0.472	0.551	0.63	0.63	0.63	-	-
	-	0.63	0.669	0.669	0.669	-	-
	-	-	0.748	0.748	0.748	-	-
	-	-	0.945	0.945	0.945	-	-
<b>Maximum insert dimensions</b>							
M1	1.36	1.36	1.97	1.97	2.05	2.52	3.23
M2	-	1.06	1.46	1.46	-	-	-
P1	0.71	0.91	1.26	1.26	1.44	1.91	2.38
P2	-	0.99	1.43	1.43	-	-	-
Sq max.	0.630	0.748	1.063	1.063	1.063	1.417	1.811
D max.	0.827	0.929	1.323	1.323	1.323	1.772	2.362

DRIVE INSERTS FOR EL-O-MATIC ACTUATORS

E