

Subject to change without notice

VALVE AUTOMATION
SYSTEMS

www.elo-matic.com
ELO-MATIC[®]

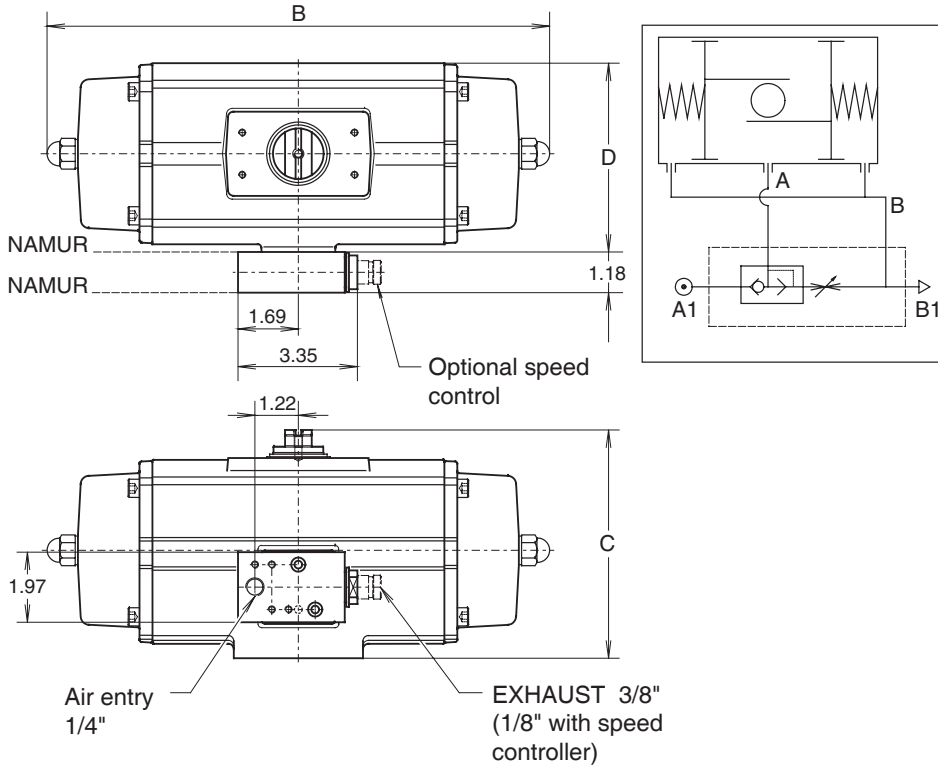
All rights reserved

Nr.:

A 3.120

Date:

Febr. '00



Description:

The breather block provides corrosion protection of the actuator spring chamber. It should be used on applications where the actuator is located in a corrosive atmosphere which would otherwise be sucked into the actuator through the "B" port during the spring stroke.

The breather block is fixed directly onto the NAMUR air entry manifold and has a further NAMUR interface so that a suitable solenoid valve may be directly mounted, or for a tubing connection in the case of a remote solenoid valve.

The breather block has an inbuilt quick exhaust function to improve the spring stroke time (see table). An optional speed control can be provided to regulate the closing time.

Operation:

Air entering the actuator at A1 moves the shuttle valve to the right and allows the actuator to operate normally, displaced air from "B" is exhausted through "B1".

At the spring stroke, air is exhausted at "A1" and the shuttle valve moves to the left allowing the air from "A" to first fill the spring chamber through "B" then to exhaust to atmosphere at "B1".

General Specification:

- Housing : Aluminum alloy
- Finish : Hard anodised, impregnated with PTFE
- Pressure : 20 to 120 psi
- Media : Air, dry or lubricated or non-corrosive gas (not suitable for oxygen service)
- Temperature : -4°F to 125°F
- Air entry : ¼" NPT
- Air exhaust : G 3/8" (or 1/8" with speed control)
- Air flow: (CV) : Air stroke : 0.056 (US gallon/min.)
- : Spring stroke : 0.133 (US gallon/min.)

Identification:

- Factory option: : "BB" is added to the basic actuator part Nr. i.e.. ES200+BB
- Kit option: : Kit BB
- With speed control: : Kit BBS

Dim. in inches	Actuator type										
	E25	E40	E65	E100	E200	E350	E600	E950	E1600	P2500	P4000
B PE/ES	6.77	8.03	9.80	10.51	14.17	15.24	18.78	20.35	25.08	22.44	32.83
C	3.94	4.45	4.92	5.43	6.42	7.91	9.84	11.38	12.87	15.20	16.14
D	3.27	3.78	4.21	4.61	5.39	7.15	8.52	9.51	10.81	14.09	15.35
Operating times in sec. (at 80 PSI with average load)											
Air stroke	0.35	0.4	0.5	0.53	0.78	1.13	1.68	2.63	4.11	4.73	8.63
Spring stroke	0.33	0.36	0.42	0.44	0.58	0.8	1.12	1.69	2.57	2.94	5.26

SPRING RETURN ACTUATOR WITH Q.E. BREATHER BLOCK

BB