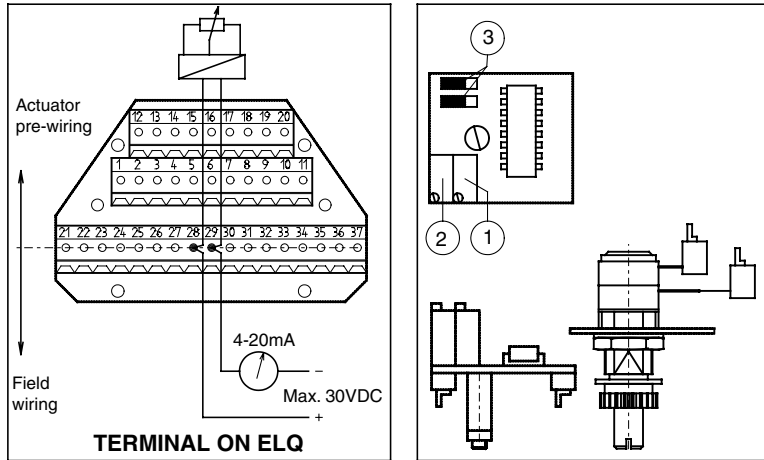
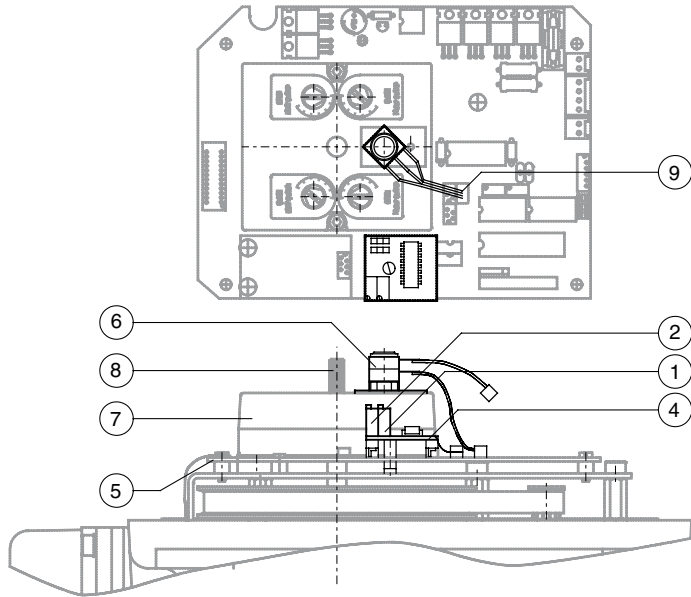


# Data sheet

Sheet No.: A5.305 Rev. A  
Date: November 2009

## ELQ ACTUATOR WITH 4-20mA POSITION TRANSMITTER

Q-PT



### Description

This ELQ electric actuator option provides a varying indication of the actuator and valve position by transmitting a 4- 20 mA signal, this is proportional to the output shaft. Feedback is reversible from a 4-20mA signal to a 20-4mA signal by means of a jumper setting (3).

This option consists of an electronic card and a potentiometer fed from an external (24VDC) power supply. The card is equipped with trimmers for zero (1) and span (2) adjustment. When mounted on top of the mainboard the option is connected to the terminal compartment by internal wiring.

### Construction

The electronic card (4) is mounted on top of the mainboard (5). The potentiometer (6) is mounted in the limit switch assembly (7) and is driven by the indicator shaft (8) and an intermediate gear in the limit switch assembly. The potentiometer connector (9) is plugged in the mainboard. The mainboard is prewired to the terminal strip in the terminal compartment.

### Specifications

Input	: 15 to 30 VDC
Output	: 4 to 20 mA, with adjustable zero and span
Temperature	: -4.0° to +158°F
Potentiometer	: 10KW; other values on request
Voltage drop	: 2V max.
Accuracy	: 2 %

### Identification

Factory option	: Add "+ Q-PT" to the basic actuator size : eg. ELQ100 + Q-PT
Kit option	: Actuator size is added to: "Kit Q-PT" : eg. Kit Q-PT / ELQ100

### Note

1 When a combination of two options is needed, both of which need a feedback potentiometer, the second plug from the double potentiometer can be used.

**EL-O-MATIC™**

www.El-O-matic.com

Copyright © Emerson Process Management. The information in this document is subject to change without notice.

Updated data sheets can be obtained from our website [www.El-O-Matic.com](http://www.El-O-Matic.com) or from your nearest Valve Automation Center **USA:** +1 813 319 0266 **Europe:** +31 74 256 10 10 **Asia-Pacific:** +65 6501 4600

  
**EMERSON™**  
Process Management