

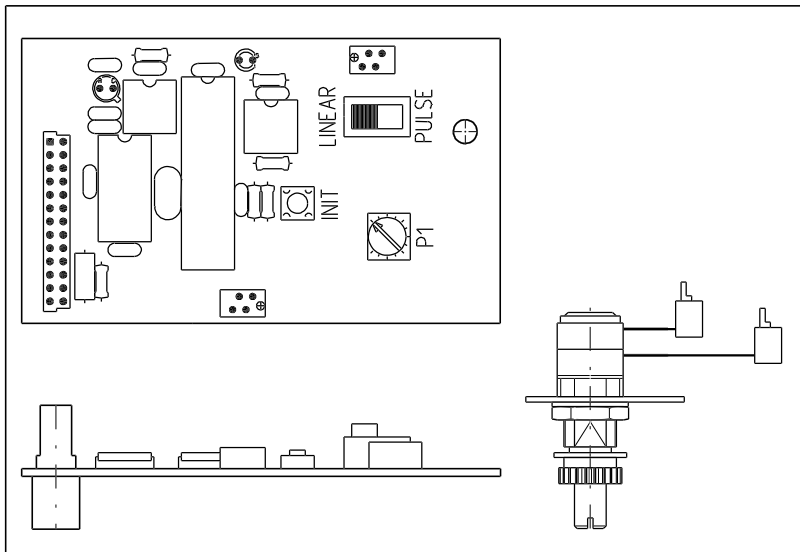
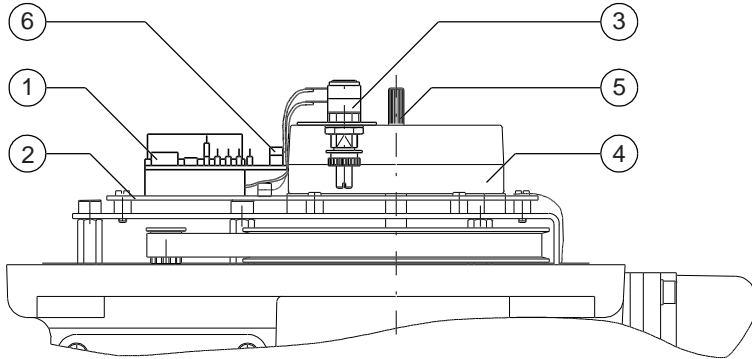
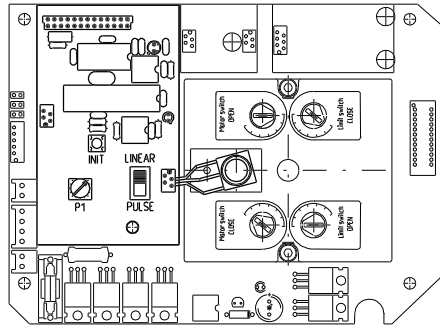
Subject to change without notice

VALVE AUTOMATION SYSTEMS

ELQ-MATIC<sup>®</sup> INTERNATIONAL

Nr.: 5.304  
All rights reserved

Date: June '00



**Description**

This electric actuator option controls the speed of the ELQ-actuator. It has an electronic card and a feedback potentiometer. The electronic card is equipped with an initialization button, a potentiometer and a switch for speed range selection. A two speed range selection is made with a "linear/pulse" switch and further fine adjustment made by means of a potentiometer. The linear setting is for the "high" speed range (shorter cycle times) and the pulse setting is for the "low" speed range (longer cycle times).

**Construction**

The speed control card (1) is mounted on top of the mainboard (2). The feedback potentiometer (3) is mounted in the limit switch assembly (4) on top of the mainboard. The potentiometer is driven by the indicator shaft (5) and an intermediate gear in the limit switch assembly. The potentiometer connector (6) is plugged in to the speed control card.

**Specifications:**

Temperature : -20° to +70°C

**Identification**

- Factory Option : Add "+ Q-SC" to the basic actuator size.  
: eg. ELQ100 + Q-SC
- Kit Option : Actuator size is added to: "Kit, Q-SC"  
: eg. Kit, Q-SC/ELQ100

**Note** 1) When a combination of two options is needed, both of which need a feedback potentiometer, the second plug from the double potentiometer can be used.

ELQ ACTUATOR WITH SPEED CONTROL OPTION

Q-SC

Type	Cycle times speed control option			
	Linear (sec)		Pulse (sec)	
	Min.	Max.	Min.	Max.
ELQ100	6	11	11	88
ELQ200	8	15	15	120
ELQ300	13	24	24	200
ELQ500	17	31	31	240
ELQ800	28	51	51	400