

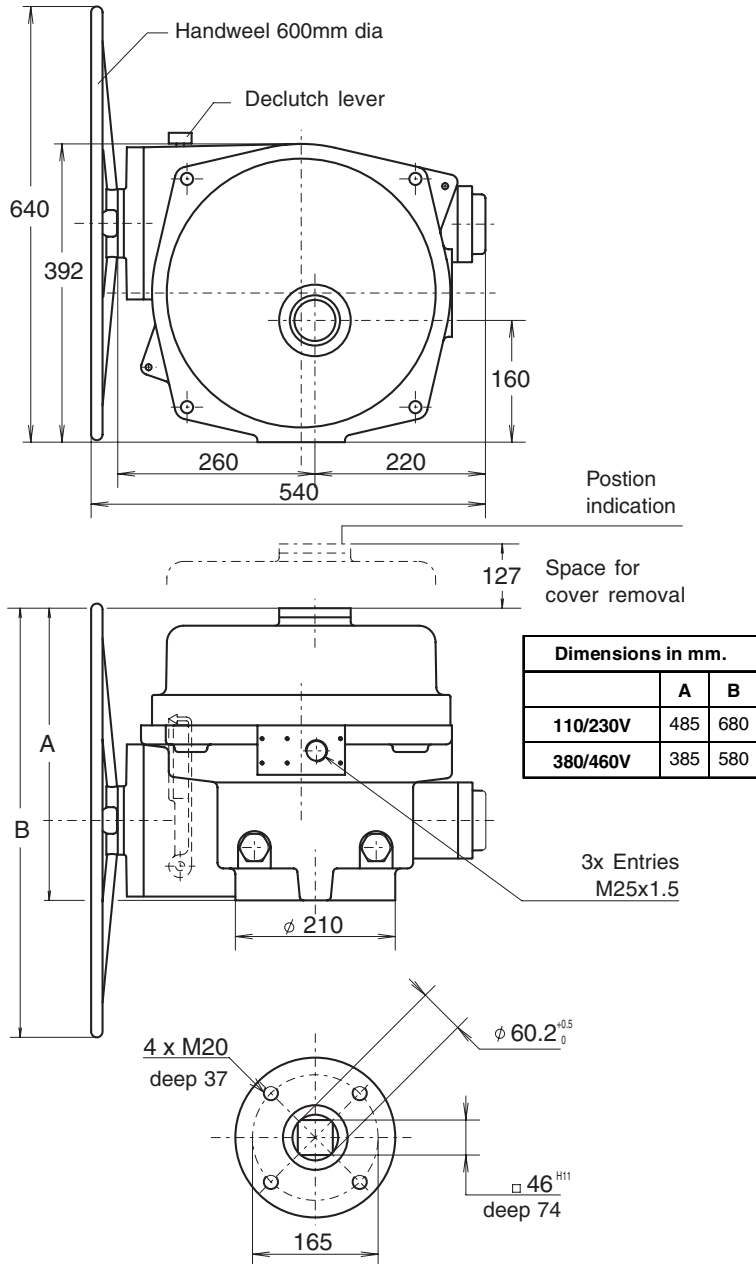
Subject to change without notice

VALVE AUTOMATION SYSTEMS

EL-O-MATIC®  
WWW.EL-O-MATIC.COM

Nr.:  
5.103.1  
All rights reserved

Date:  
Feb. '05



### Description

EL-2500 actuators use worm and wormwheel reduction gearing to provide tight positioning control and the self locking feature necessary for controlling larger valves, particularly butterfly types.

The housing is of two aluminium castings, it contains the drive motor and worm gear assembly, together with the anti-condensation heater and main terminal strip.

EL-2500 actuator take the full range of control options, it has mechanical end position stops and torque switches. Visual position indication is by a window in the top cover.

A geared manual override is fitted as standard, it is engaged by means of a declutching lever. When the motor is energized the unit automatically returns to motor operation, thus ensuring operator safety.

### General Specification

Nominal Rotation : 90° - factory set to ±3°  
: Adjustable by limit switches: 10° to 320°

Enclosure : IP-67  
Temperature range : -20° to +70°C  
Electrical connections : By 12 and 16 point internal terminal strip

Cable entries : 3x M25x1.5  
Life : 50.000 operations minimum  
Heater : 20 Watt

Voltages Single phase : 110-130V 50Hz or 60Hz  
: 220-240V 50Hz or 240-280V 60Hz  
Three phase : 380-415V 50Hz or 415-460V 60Hz

Other voltages : On request  
Stall protection : By torque switches and motor thermostat

**Minimum customer switch or contactor rating 16Amp.**

### Technical data

Torque Break : 2500 Nm.  
Run : 875 Nm.  
Limit switches : 4x 16 A SPDT  
Weight : 75 Kg.  
Duty : 30%  
Torque switches : 2x 16 A SPDT (adjust. from 1500 to 2500 Nm.)

Voltage/phase/Hz.		120/1/60	230/1/50	380/3/50	460/3/60
Current (A)	break	58	27	9	2
	run	8	6	1.5	1.6
Power consumption (W)		720	792	560	600
Power factor		0.74	0.5	0.67	0.6
Operation time	(sec.)	22.5	28	28	22.5

DIMENSIONS AND TECHNICAL DETAILS

EL 2500