

Subject to change without notice

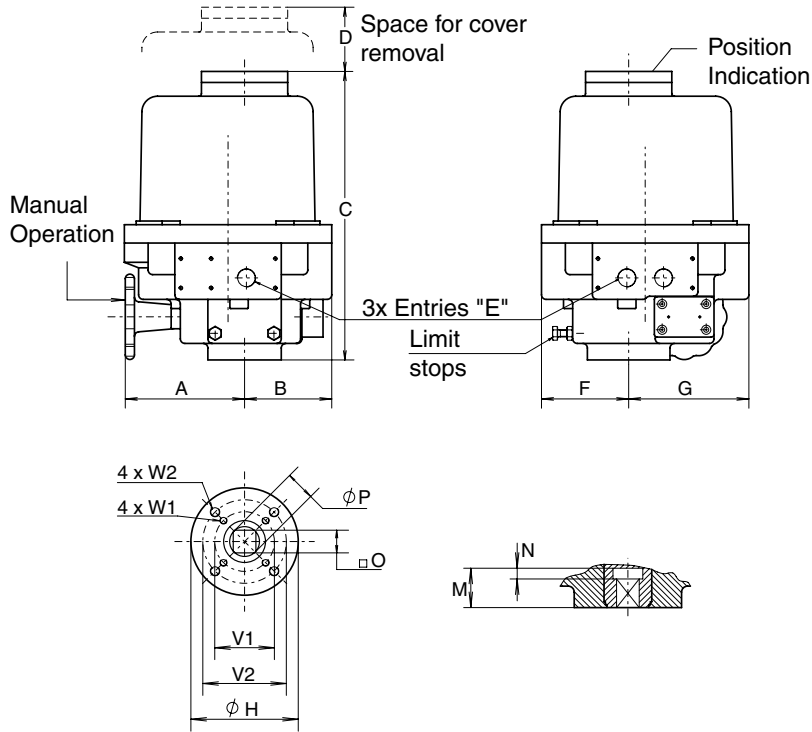
VALVE AUTOMATION  
SYSTEMS

EL-O-MATIC  
WWW.EL-O-MATIC.COM

All rights reserved

A 5.105.2

July '07



Dim in inches	EL 35	EL100	EL150	EL200	EL350	EL500	EL800
A	5.12	5.31	5.31	7.28	7.28	7.68	6.97
B	2.36	3.94	3.94	4.29	4.29	5.04	5.04
C	10.83	11.42	11.50	12.40	12.40	14.96	14.96
D	5.71	6.50	6.50	6.50	6.50	6.50	6.30
E	1/2"NPT	1/2"NPT	1/2"NPT	3/4"NPT	3/4"NPT	3/4"NPT	3/4"NPT
F	2.76	3.03	3.03	3.78	3.78	4.84	4.84
G	3.74	4.72	4.72	5.53	5.53	6.54	6.54
H	3.54	3.54	3.54	4.92	4.92	4.92	4.92
M	1.08	1.30	1.30	1.30	1.30	1.77	1.77
N	0.35	0.35	0.35	0.35	0.35	-	-
O max.	0.556	0.752	0.752	0.752	0.752	1.068	1.068
O min.	0.551	0.748	0.748	0.748	0.748	1.063	1.063
P	0.709	0.984	0.984	0.984	0.984	1.417	1.417
V1	1.969	1.969	1.969	2.756	2.756	4.016	4.921
V2	2.756	2.756	2.756	4.016	4.016	-	-
W1	1/4-20 x .47	1/4-20 x .47	1/4-20 x .47	5/16-18 x .59	5/16-18 x .59	3/8-16 x .71	1/2-13 x .79
W2	5/16-18 x .59	5/16-18 x .59	5/16-18 x .59	3/8-16 x .71	3/8-16 x .71	-	-

### Description

Type EL actuators use worm and wormwheel reduction gearing to provide tight positioning control. The self locking feature is necessary for controlling larger valves, particularly butterfly types.

The explosionproof housing consists of two aluminium castings, this contains the drive motor and worm gear assembly, together with the anti-condensation heater and main terminal strip.

EL actuators take the full range of control options, they have hand wheel geared manual over rides, mechanical end position stops and torque switches on all the larger sizes. Visual position indication is by a window in the top cover.

### General Specification

- Nominal Rotation : 90° - factory set to ±3°
- : Adjustable by limit switches 10° to 320°
- Explosion proof : Class I / Div. I, group C + D
- : Class II/III / Div. I, group E, F + G
- : FM Hazardous area classification is compliant to NEMA 7C and NEMA 7D ratings.
- FM Approval : J.1.OTOA7.AE (3615)
- Temperature : -4° to +158°F
- Connections : By 12 and/or 16 point internal terminal strip.
- Finish : Two component polyurethane coating.
- Life : 50,000 operations minimum
- Heather : 10 Watt
- Voltages : 24VDC or 24VAC
- Single phase : 110-130v 50Hz or 60Hz
- : 220-240V 50Hz or 240-280v 60Hz
- Three phase : 380-415V 50Hz or 415-460V 60Hz
- Stall protection : By motor thermostat (all sizes).
- : By thermostat and by torque switches (EL 100-800).
- Identification : Example: EL 35 FM

Minimum customer switch or contactor rating 16Amp.

Performance		EL 35	EL100	EL150	EL200	EL350	EL500	EL800
Torque (In.lb.)	Break	487	885	1328	1770	3098	4425	7081
	Run	177	310	469	620	1089	1549	2478
Speed (Sec.)	50Hz	6	7.5	9	13.5	22	25.5	25.5
	Current (A)	220V AC	0.6	1.7	1.7	1.7	1.7	1.7
(Max.)	110V AC	1.1	2.9	2.9	2.9	2.9	2.9	4.5
	Power (W)	220V AC	72	200	200	200	200	200
Switches-Indication		4x16A	4x16A	4x16A	4x16A	4x16A	4x16A	4x16A
Torque SPDT at 110/240VAC)		-	2x16A	2x16A	2x16A	2x16A	2x16A	2x16A
Weight (lb.)		16	27	27	41	44	61	69
Duty rating		30%	30%	30%	30%	30%	30%	30%

DIMENSIONS AND TECHNICAL DETAILS - ELECTRIC ACTUATOR - EL FM