

# Data sheet

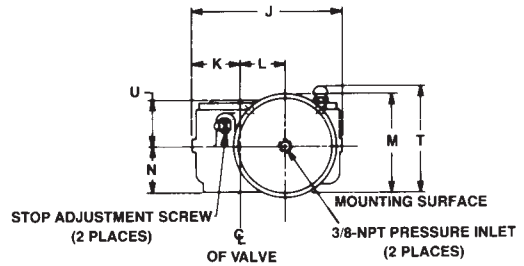
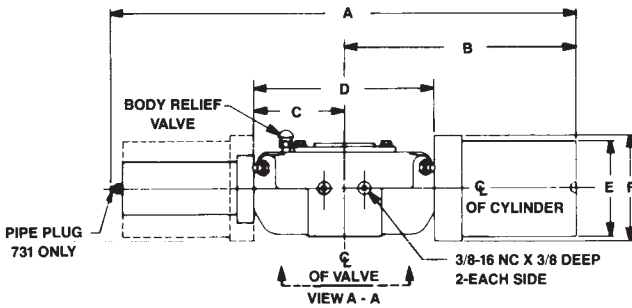
Sheet No.: HPM 3.01 RevA

Date: September 2009

HD-Series

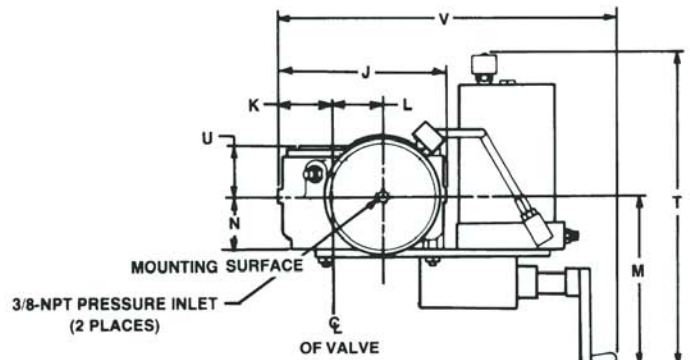
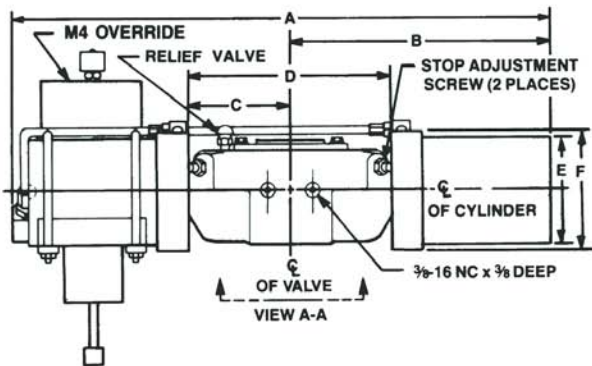
## Dimensions – (Pneumatic) mm.

### Double-Acting Actuators



| Actuator Model | A      | B     | C     | D     | E     | F     | G     | H    | J     | K    | L    | M     | N    | P     | Q           | R    | S     | T     | U    |
|----------------|--------|-------|-------|-------|-------|-------|-------|------|-------|------|------|-------|------|-------|-------------|------|-------|-------|------|
| 521            | 843.0  | 460.2 |       |       | 136.7 | 151.6 |       |      |       |      |      | 147.6 |      |       |             |      |       |       |      |
| 721            | 851.7  | 469.1 | 141.2 | 282.4 | 190.5 | 206.2 | 81.0  | 40.4 | 226.3 | 73.2 | 63.5 | 174.8 | 71.4 | 63.60 | .500-13 UNC | 19.1 | 142.7 | 193.5 | 73.2 |
| 722            | 938.3  |       |       |       |       |       |       |      |       |      |      |       |      |       |             |      |       |       |      |
| 731            | 1006.3 | 566.7 | 173.0 | 345.9 |       |       | 103.1 | 51.6 | 300.0 | 91.9 | 85.9 | 193.5 | 90.4 | 82.55 | .750-10 UNC | 25.4 | 184.2 | 212.9 | 95.3 |
| 732            | 1133.3 |       |       |       |       |       |       |      |       |      |      |       |      |       |             |      |       |       |      |

### Double-Acting with M4 Hydraulic Override



| Actuator Model | A      | B     | C     | D     | E     | F     | G    | H    | J     | K    | L    | M     | N    | P     | Q           | R    | S     | T     | U    | V     |
|----------------|--------|-------|-------|-------|-------|-------|------|------|-------|------|------|-------|------|-------|-------------|------|-------|-------|------|-------|
| 521-M4         | 920.8  | 460.2 |       |       | 136.7 | 150.9 |      |      |       |      |      |       |      |       |             |      |       |       |      |       |
| 721-M4         | 938.3  | 469.1 | 141.2 | 282.4 | 190.5 | 215.9 | 81.0 | 40.4 | 226.3 | 73.2 | 63.5 | 349.3 | 71.4 | 63.60 | .500-13 UNC | 19.1 | 142.7 | 522.2 | 73.2 | 503.2 |
| 731-M4         | 1133.3 |       |       |       |       |       |      |      |       |      |      |       |      |       |             |      |       |       |      |       |

Note: Not Certified dimensional drawings. Such drawings available on request.  
 Contact factory with correct model designation and serial number.  
 All dimensions are expressed in millimeters.



www.Bettis.com

Copyright © Emerson Process Management. The information in this document is subject to change without notice.  
 Updated data sheets can be obtained from our website [www.bettis.com](http://www.bettis.com) or from your nearest Valve Automation Center.  
 USA: +1 281 727 5300 Europe: +31 74 256 1010 Asia-Pacific: +65 6501 4600



**Data sheet**

Sheet No.: HPM 3.02 RevA

Date: September 2009

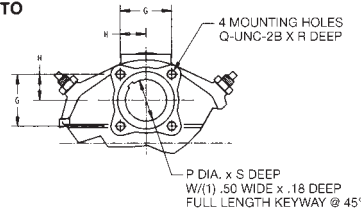
**HD-Series**

# Dimensions – (Pneumatic) mm.

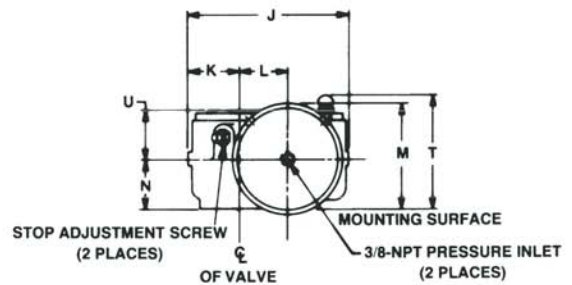
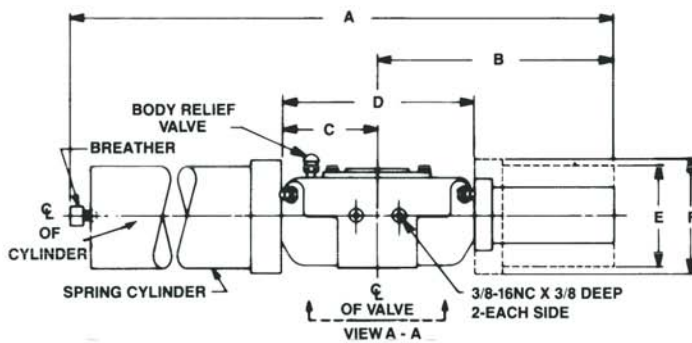
## Mounting Dimensions (View A-A) For All HD-Series Actuators

(Dimensions G, H, P, Q, R and S)

**NOTE: ACTUATOR SHOWN ROTATED TO THE FULL CLOCKWISE POSITION.**



## Spring-Return



| Actuator Model | Spring Size |        |        |        |        |        |        | B     | C     | D     | E     | F     | G     |
|----------------|-------------|--------|--------|--------|--------|--------|--------|-------|-------|-------|-------|-------|-------|
|                | 40          | 60     | 80     | 100    | 120    | 150    | 200    |       |       |       |       |       |       |
|                | Dimension A |        |        |        |        |        |        |       |       |       |       |       |       |
| 521-SR         | 1125.5      | 1125.5 | 1125.5 | 1272.3 | 1272.3 | 1272.3 | 1353.3 | 382.5 | 141.2 | 282.4 | 136.7 | 151.6 | 81.0  |
| 721-SR         | 1154.2      | 1154.2 | 1154.2 | 1154.2 | 1273.0 | 1273.0 | —      |       |       |       |       |       |       |
| 722-SR         | 1296.9      | 1296.9 | 1398.5 | 1398.5 | —      | —      | —      | 469.1 | 173.0 | 345.9 | 190.5 | 206.2 | 103.1 |
| 732-SR         | 1541.5      | 1541.5 | 1677.9 | 1677.9 | 1782.8 | 1782.8 | —      | 566.7 |       |       |       |       |       |

| Actuator Model | H    | J     | K    | L    | M     | N    | P     | Q THD.      | R    | S     | T     | U    |
|----------------|------|-------|------|------|-------|------|-------|-------------|------|-------|-------|------|
| 521-SR         | 40.4 | 226.3 | 73.2 | 63.5 | 147.6 | 71.4 | 63.60 | .500-13 UNC | 19.1 | 142.7 | 193.5 | 73.2 |
| 721-SR         |      |       |      |      | 174.8 |      |       |             |      |       |       |      |
| 722-SR         |      |       |      |      |       |      |       |             |      |       |       |      |
| 732-SR         | 51.6 | 300.0 | 91.9 | 85.9 | 193.5 | 90.4 | 82.55 | .750-10 UNC | 25.4 | 184.2 | 212.9 | 95.3 |

Note: Not Certified dimensional drawings. Such drawings available on request.  
 Contact factory with correct model designation and serial number.  
 All dimensions are expressed in millimeters.



www.Bettis.com

Copyright © Emerson Process Management. The information in this document is subject to change without notice.  
 Updated data sheets can be obtained from our website [www.bettis.com](http://www.bettis.com) or from your nearest Valve Automation Center.  
 USA: +1 281 727 5300 Europe: +31 74 256 1010 Asia-Pacific: +65 6501 4600



# Data sheet

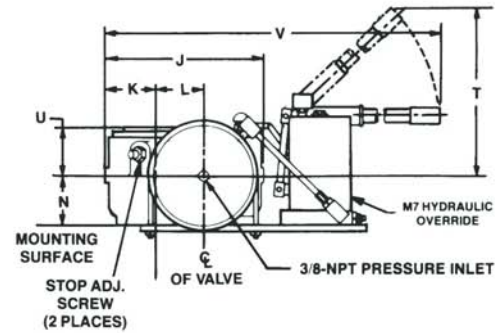
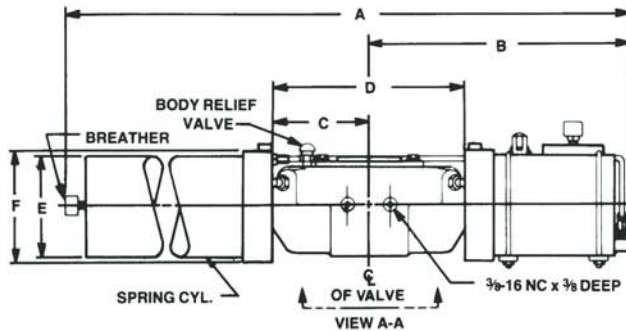
Sheet No.: HPM 3.03 RevA

Date: September 2009

HD-Series

## Dimensions – (Pneumatic) mm.

### Spring-Return with M7 Hydraulic Override



| Actuator Model | Spring Size |        |        |        |        |        |        | B     | C     | D     | E     | F     | G    |
|----------------|-------------|--------|--------|--------|--------|--------|--------|-------|-------|-------|-------|-------|------|
|                | 40          | 60     | 80     | 100    | 120    | 150    | 200    |       |       |       |       |       |      |
|                | Dimension A |        |        |        |        |        |        |       |       |       |       |       |      |
| 521-SR-M11     | 1203.5      | 1203.5 | 1203.5 | 1350.3 | 1350.3 | 1350.3 | 1431.0 | 382.5 | 141.2 | 282.4 | 136.7 | 151.6 | 81.0 |
| 721-SR-M11     | 1240.5      | 1240.5 | 1240.5 | 1240.5 | 1359.7 | 1359.7 | —      |       |       |       | 190.5 | 206.2 |      |
| 731-SR-M11     | 1541.5      | 1541.5 | 1677.9 | 1677.9 | 1782.8 | 1782.8 | —      |       |       |       | 566.7 | 173.0 |      |

| Actuator Model | H    | J     | K    | L    | M | N    | P     | Q THD.      | R    | S     | T     | U    | V     |
|----------------|------|-------|------|------|---|------|-------|-------------|------|-------|-------|------|-------|
| 521-SR-M11     | 40.4 | 226.3 | 73.2 | 63.5 | — | 71.4 | 63.60 | .500-13 UNC | 19.1 | 142.7 | 762.0 | 73.2 | 913.6 |
| 721-SR-M11     |      |       |      |      | — |      |       |             |      |       |       |      | 926.3 |
| 731-SR-M11     | 51.6 | 300.0 | 91.9 | 85.9 | — | 90.4 | 82.55 | .750-10 UNC | 25.4 | 184.2 | —     | 95.3 | 954.8 |

Note: Not Certified dimensional drawings. Such drawings available on request.  
 Contact factory with correct model designation and serial number.  
 All dimensions are expressed in millimeters.



www.Bettis.com

Copyright © Emerson Process Management. The information in this document is subject to change without notice.  
 Updated data sheets can be obtained from our website [www.bettis.com](http://www.bettis.com) or from your nearest Valve Automation Center.  
 USA: +1 281 727 5300 Europe: +31 74 256 1010 Asia-Pacific: +65 6501 4600

