

Data sheet

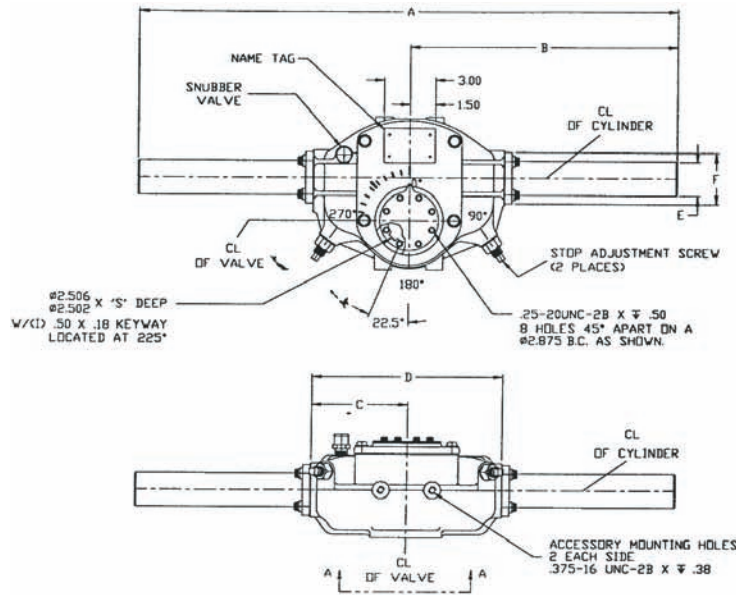
Sheet No.: HHI 3.01 RevB

Date: August 2010

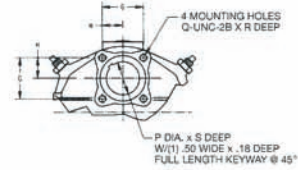
HD-Series

Dimensions – (Hydraulic) In.

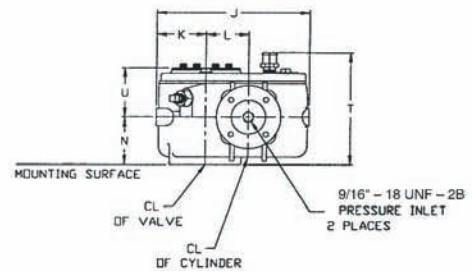
Double-Acting Actuators



NOTE: ACTUATOR SHOWN ROTATED TO THE FULL CLOCKWISE POSITION.



VIEW A-A MOUNTING DIMENSIONS



Actuator Model	A	B	C	D	E	F	G	H	J	K	L	M	N	P	Q	R	S	T	U
H251.5	31.50	15.75	5.56	11.12	2.00	3.75	3.18	1.59	8.91	2.87	2.50	N/A	2.81	N/A	1/2-13	0.75	5.62	7.12	3.00

Note: Not Certified dimensional drawings. Such drawings available on request.
 Contact factory with correct model designation and serial number.
 All dimensions are expressed in inches.

BETTIS™

www.Bettis.com

Copyright © Emerson Process Management. The information in this document is subject to change without notice.
 Updated data sheets can be obtained from our website www.bettis.com or from your nearest Valve Automation Center.
 USA: +1 281 727 5300 Europe: +31 74 256 1010 Asia-Pacific: +65 6501 4600



EMERSON™

Process Management

Data sheet

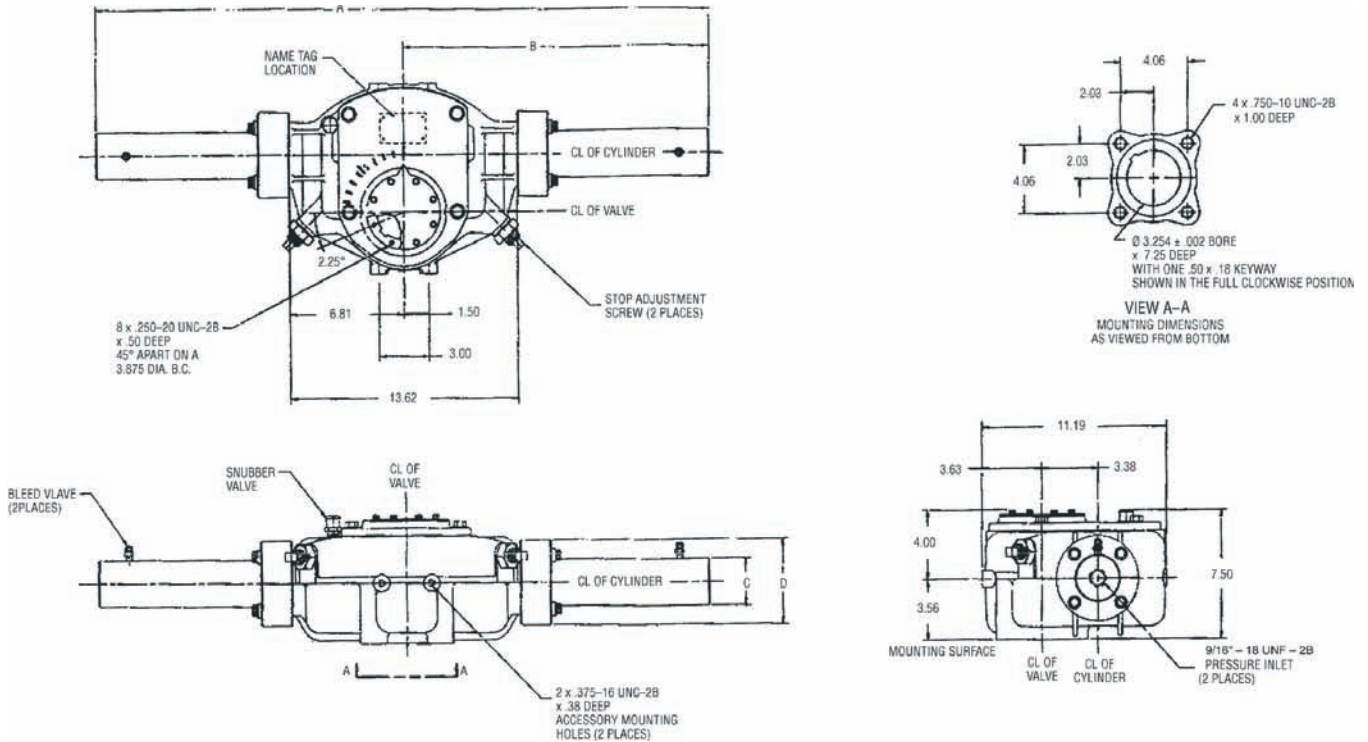
Sheet No.: HHI 3.02 RevB

Date: August 2010

HD-Series

Dimensions – (Hydraulic) In.

Double-Acting Actuators



Actuator Model	A	B	C	D
H352.1	36.88	18.44	2.75	5.00

Note: Not Certified dimensional drawings. Such drawings available on request.
 Contact factory with correct model designation and serial number.
 All dimensions are expressed in inches.

BETTIS[™]

www.Bettis.com

Copyright © Emerson Process Management. The information in this document is subject to change without notice.
 Updated data sheets can be obtained from our website www.bettis.com or from your nearest Valve Automation Center.
 USA: +1 281 727 5300 Europe: +31 74 256 1010 Asia-Pacific: +65 6501 4600


EMERSON[™]
 Process Management

Data sheet

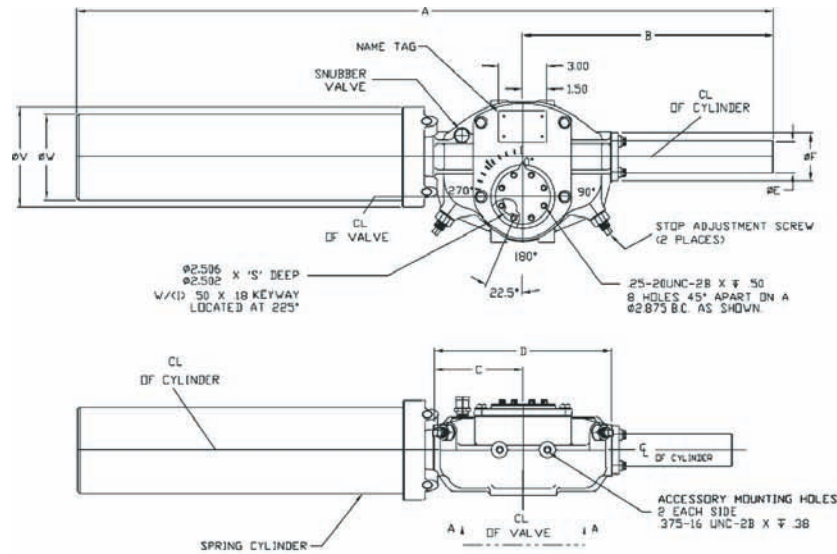
Sheet No.: HHI 3.03 RevB

Date: August 2010

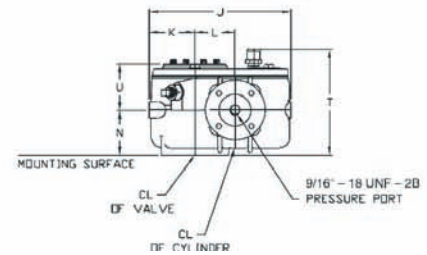
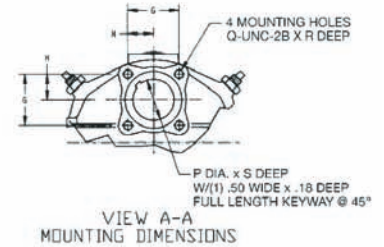
HD-Series

Dimensions – (Hydraulic) In.

Spring-Return Actuators



NOTE: ACTUATOR SHOWN ROTATED TO THE FULL CLOCKWISE POSITION.



Actuator Model	A	B	C	D	E	F	G	H	J	K	L	M	N	Q	R	S	T	U	V	W
HD251.5-SR 560	43.69																			
HD251.5-SR 5150	49.47																			
HD251-SR 5100		15.75	5.56	11.12	2.00	3.75	3.18	1.59	8.91	2.87	2.50	N.A.	2.81	1/2-13	0.75	5.62	7.12	3.00	5.94	5.37
HD251-SR 5125	43.69																			
HD251-SR 580																				
HD251-SR 540																				
HD251-SR 560																				

Note: Not Certified dimensional drawings. Such drawings available on request. Contact factory with correct model designation and serial number. All dimensions are expressed in inches.



www.Bettis.com

Copyright © Emerson Process Management. The information in this document is subject to change without notice. Updated data sheets can be obtained from our website www.bettis.com or from your nearest Valve Automation Center. USA: +1 281 727 5300 Europe: +31 74 256 1010 Asia-Pacific: +65 6501 4600



EMERSON
Process Management

Data sheet

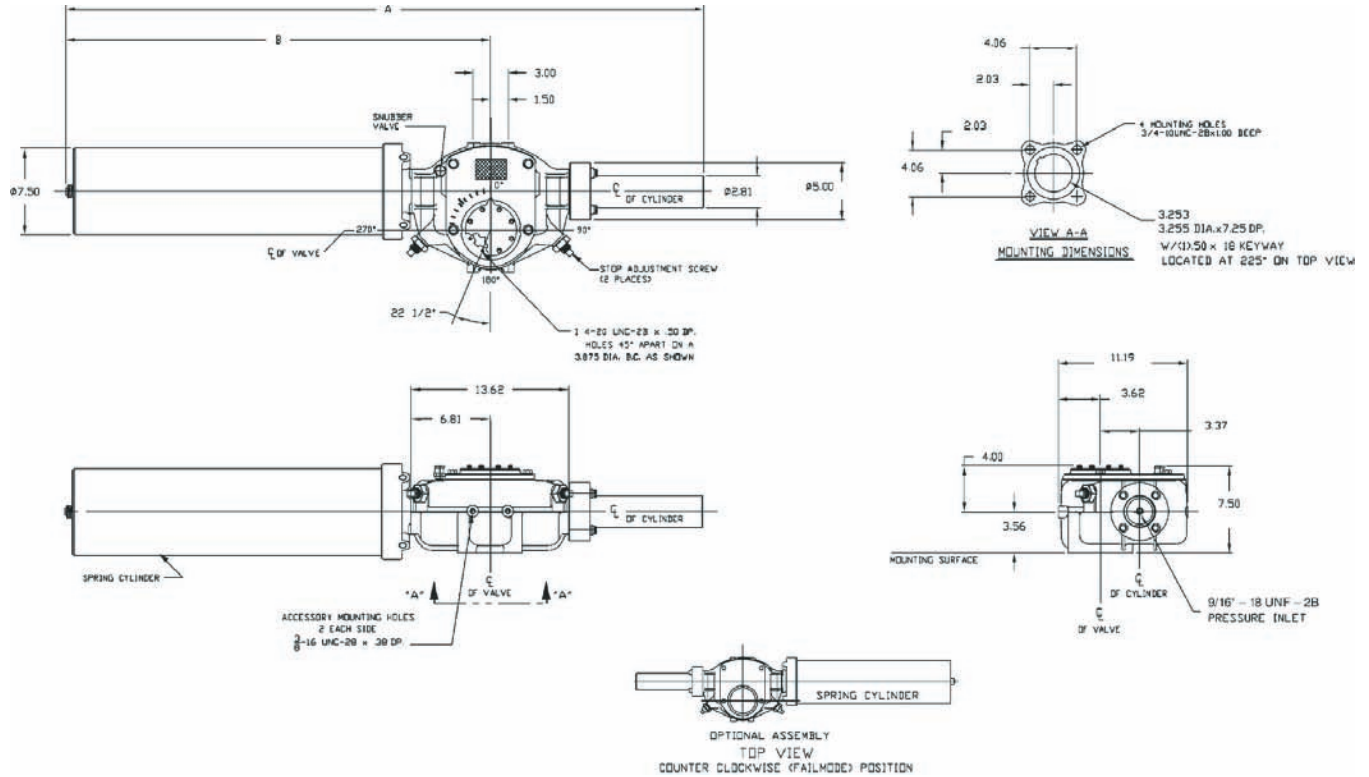
Sheet No.: HHI 3.04 RevB

Date: August 2010

HD-Series

Dimensions – (Hydraulic) In.

Spring-Return Actuators



Actuator Model	A	B
H352.1-SR 740/760	59.87	37.87
H352.1-SR 780/7100	59.87	37.87
H352.1-SR 7125/7150	65.25	43.25

Note: Not Certified dimensional drawings. Such drawings available on request.
 Contact factory with correct model designation and serial number.
 All dimensions are expressed in inches.

BETTISTM

www.Bettis.com

Copyright © Emerson Process Management. The information in this document is subject to change without notice.
 Updated data sheets can be obtained from our website www.bettis.com or from your nearest Valve Automation Center.
 USA: +1 281 727 5300 Europe: +31 74 256 1010 Asia-Pacific: +65 6501 4600

EMERSONTM
 Process Management