

Bettis G-Series

Technical Data Pneumatic Actuators - Metric



Data sheet

Sheet No.: GPM 1.01 RevB

Date: August 2010

G-Series

Torque Ratings – (Pneumatic)

All Published Torques are Guaranteed Minimum Values.

Double-Acting Actuators

G-Series

Actuator Model	Stroke Position	Operating Pressure (Bar)											
		3	3.5	4	5	5.5	6	7	8	9	10	12	13
		Pressure Torque Output Start/Min./End (Nm)											
G01108	Start/End			1362	1702	1872	2043	2383	2724	3064	3405	4085	4426
	Minimum			719	898	988	1078	1258	1437	1617	1797	2156	2336
G01109	Start/End	1302	1519	1736	2170	2387	2604	3038	3472	3906	4340		
	Minimum	687	802	916	1145	1260	1374	1603	1832	2061	2291		
G01110	Start/End	1726	2014	2302	2877	3165	3453	4028					
	Minimum	911	1063	1215	1519	1670	1822	2126					
G01112	Start/End	2474	2887	3299	4124	4536							
	Minimum	1306	1524	1741	2177	2394							
G01114	Start/End	3009	3511	4012									
	Minimum	1588	1853	2117									
G2109	Start/End				2627	2889	3152	3677	4203	4728	5254	6304	
	Minimum				1386	1525	1664	1941	2218	2495	2773	3327	
G2110	Start/End		2438	2786	3483	3831	4180	4876	5573	6269			
	Minimum		1287	1471	1838	2022	2206	2574	2941	3309			
G2112	Start/End	2995	3495	3994	4992	5491	5991	6989					
	Minimum	1581	1844	2108	2635	2898	3162	3689					
G2114	Start/End	3643	4250	4857	6071	6678							
	Minimum	1922	2243	2563	3204	3524							
G2116	Start/End	4808	5609	6410									
	Minimum	2537	2960	3383									
G3110	Start/End				4201	4621	5041	5881	6721	7562	8402	10082	10922
	Minimum				2217	2439	2661	3104	3547	3991	4434	5321	5765
G3112	Start/End		4227	4831	6038	6642	7246	8454	9661	10869			
	Minimum		2231	2549	3187	3506	3824	4462	5099	5736			
G3114	Start/End	4411	5146	5881	7351	8086	8822	10292	11762				
	Minimum	2328	2716	3104	3880	4268	4656	5432	6208				
G3116	Start/End	5829	6801	7773	9716	10687	11659						
	Minimum	3077	3589	4102	5128	5641	6153						
G3120	Start/End	9251	10792										
	Minimum	4882	5696										
Actuator Model	Stroke Position	Pressure Torque Output Start/Min./End (Nm)											
		3	3.5	4	5	5.5	6	7	8	9	10	12	13
		Operating Pressure (Bar)											



www.Bettis.com

Copyright © Emerson Process Management. The information in this document is subject to change without notice. Updated data sheets can be obtained from our website www.bettis.com or from your nearest Valve Automation Center. USA: +1 281 727 5300 Europe: +31 74 256 1010 Asia-Pacific: +65 6501 4600



Data sheet

Sheet No.: GPM 1.02 RevB

Date: August 2010

G-Series

Torque Ratings – (Pneumatic)

All Published Torques are Guaranteed Minimum Values.

Double-Acting Actuators

G-Series (cont.)

Actuator Model	Stroke Position	Operating Pressure (Bar)											
		3	3.5	4	5	5.5	6	7	8	9	10	12	13
		Pressure Torque Output Start/Min./End (Nm)											
G4112	Start/End					8003	8730	10185	11640	13095	14551	17461	18916
	Minimum					4224	4608	5376	6144	6911	7679	9215	9983
G4114	Start/End				8870	9757	10644	12418	14192	15965	17739	21287	
	Minimum				4681	5149	5617	6554	7490	8426	9362	11235	
G4116	Start/End	7045	8219	9393	11741	12915	14089	16437	18785	21134	23482		
	Minimum	3718	4338	4957	6197	6816	7436	8675	9914	11154	12393		
G4120	Start/End	11199	13065	14932	18665	20531	22398						
	Minimum	5910	6896	7881	9851	10836	11821						
G4124	Start/End	16298	19015	21731									
	Minimum	8602	10036	11469									
G4128	Start/End	23033											
	Minimum	12156											
G5116	Start/End							21015	24017	27020	30022	36026	39028
	Minimum							11091	12676	14260	15845	19014	20598
G5120	Start/End			19177	23971	26368	28765	33560	38354	43148	47942		
	Minimum			10121	12651	13917	15182	17712	20242	22773	25303		
G5124	Start/End	20982	24479	27976	34970	38467	41964	48958	34143				
	Minimum	11074	12919	14765	18456	20302	22148	25839	18020				
G5128	Start/End	29697	34646	39596	49495	54444							
	Minimum	15673	18286	20898	26122	28735							
G5132	Start/End	38871	45350	51828									
	Minimum	20515	23935	27354									
G5136	Start/End	49269											
	Minimum	26003											
G7120	Start/End							40920	46766	52611	58457	70148	75994
	Minimum							21597	24682	27767	30852	37023	40108
G7124	Start/End				42727	47000	51273	59818	68363	76909	85454	102545	
	Minimum				22550	24806	27061	31571	36081	40591	45101	54121	
G7128	Start/End	36332	42387	48443	60553	66609	72664	84774	96885				
	Minimum	19175	22371	25567	31959	35154	38350	44742	51134				
Actuator Model	Stroke Position	Pressure Torque Output Start/Min./End (Nm)											
		3	3.5	4	5	5.5	6	7	8	9	10	12	13
		Operating Pressure (Bar)											



www.Bettis.com

Copyright © Emerson Process Management. The information in this document is subject to change without notice. Updated data sheets can be obtained from our website www.bettis.com or from your nearest Valve Automation Center. USA: +1 281 727 5300 Europe: +31 74 256 1010 Asia-Pacific: +65 6501 4600



Data sheet

Sheet No.: GPM 1.03 RevB

Date: August 2010

G-Series

Torque Ratings – (Pneumatic)

All Published Torques are Guaranteed Minimum Values.

Double-Acting Actuators

G-Series (cont.)

Actuator Model	Stroke Position	Operating Pressure (Bar)											
		3	3.5	4	5	5.5	6	7	8	9	10	12	13
		Pressure Torque Output Start/Min./End (Nm)											
G7132	Start/End	47591	55523	63455	79319	87251	95183						
	Minimum	25118	29304	33490	41863	46049	50235						
G7136	Start/End	60352	70411	80469	100586								
	Minimum	31852	37161	42470	53087								
G71228	Start/End	72901	85052	97202									
	Minimum	38476	44888	51301									
G8124	Start/End							70360	80412	90463	100515	120618	130669
	Minimum							37135	42440	47744	53049	63659	68964
G8128	Start/End			57108	71384	78523	85661	99938	114215	128492	142769		
	Minimum			30140	37675	41443	45210	52745	60280	67815	75350		
G8132	Start/End	56175	65538	74900	93625	102988	112350	131075	149800	168525			
	Minimum	29648	34589	39531	49413	54355	59296	69179	79061	88944			
G8136	Start/End	71299	83182	95065	118831	130714	142598	166364					
	Minimum	37630	43902	50173	62717	68988	75260	87803					
G8140	Start/End	88202	102902	117602	147003	161703							
	Minimum	46551	54309	62068	77585	85343							
G81232	Start/End	112771	131566	150361									
	Minimum	59518	69438	79357									
G81236	Start/End	143018	166854										
	Minimum	75482	88062										
G10128	Start/End							129977	148545	167113	185682	222818	241386
	Minimum							68599	78399	88199	97999	117598	127398
G10132	Start/End				122032	134235	146438	170844	195251	219657	244063	292876	317282
	Minimum				64406	70846	77287	90168	103049	115930	128811	154573	167455
G10136	Start/End			124092	155115	170626	186138	217161	248183	279206	310229		
	Minimum			65493	81866	90053	98239	114613	130986	147359	163732		
G10140	Start/End	115254	134463	153672	192090	211299	230508	268926	307344				
	Minimum	60828	70967	81105	101381	111519	121657	141933	162209				
G101232	Start/End	147209	171744	196278	245348	269883	294418						
	Minimum	77693	90642	103591	129489	142438	155387						
Actuator Model	Stroke Position	Pressure Torque Output Start/Min./End (Nm)											
		3	3.5	4	5	5.5	6	7	8	9	10	12	13
		Operating Pressure (Bar)											



www.Bettis.com

Copyright © Emerson Process Management. The information in this document is subject to change without notice.

Updated data sheets can be obtained from our website www.bettis.com or from your nearest Valve Automation Center.

USA: +1 281 727 5300 Europe: +31 74 256 1010 Asia-Pacific: +65 6501 4600



EMERSON
Process Management

Data sheet

Sheet No.: GPM 1.04 RevB

Date: August 2010

G-Series

Torque Ratings – (Pneumatic)

All Published Torques are Guaranteed Minimum Values.

Double-Acting Actuators

G-Series (cont.)

Actuator Model	Stroke Position	Operating Pressure (Bar)											
		3	3.5	4	5	5.5	6	7	8	9	10	12	13
		Pressure Torque Output Start/Min./End (Nm)											
G101236	Start/End	186908	218060	249211	311514								
	Minimum	98646	115087	131528	164410								
G101240	Start/End	231279	269825	308371									
	Minimum	122064	142408	162752									
G13140	Start/End				245340	269874	294408	343477	392545	441613	490681	588817	637885
	Minimum				129485	142434	155382	181279	207176	233073	258970	310765	336662
G13144	Start/End			238307	297884	327672	357461	417038	476614	536191	595768		
	Minimum			125773	157217	172938	188660	220103	251547	282990	314433		
G13148	Start/End		248802	284345	355432	390975	426518	497605	568691	639777			
	Minimum		131312	150071	187589	206348	225107	262625	300142	337660			
G13152	Start/End	250790	292589	334387	417984	459782	501580	585177	668774				
	Minimum	132362	154422	176482	220603	242663	264723	308844	352964				
G131240	Start/End	295910	345228	394546	493183	542501	591819						
	Minimum	156175	182204	208233	260291	286320	312349						
G131244	Start/End	358962	418789	478616	598270	658097							
	Minimum	189452	221028	252603	315754	347329							
G131248	Start/End	428019	499356	570693									
	Minimum	225899	263549	301199									
G131252	Start/End	503082	586929	670776									
	Minimum	265515	309768	354020									
Actuator Model	Stroke Position	Pressure Torque Output Start/Min./End (Nm)											
		3	3.5	4	5	5.5	6	7	8	9	10	12	13
		Operating Pressure (Bar)											



www.Bettis.com

Copyright © Emerson Process Management. The information in this document is subject to change without notice. Updated data sheets can be obtained from our website www.bettis.com or from your nearest Valve Automation Center. USA: +1 281 727 5300 Europe: +31 74 256 1010 Asia-Pacific: +65 6501 4600



Data sheet

Sheet No.: GPM 1.05 RevB

Date: August 2010

G-Series

Torque Ratings – (Pneumatic)

All Published Torques are Guaranteed Minimum Values.

Spring-Return Actuators

G-Series

Actuator Model	Spring Torque Start/Min./End (Nm)		Operating Pressure (Bar)											
			3	3.5	4	5	5.5	6	7	8	9	10	12	13
			Pressure Torque Output Start/Min./End (Nm)											
G01108-SR4	Start	1312					622	792	1132	1473	1813	2154	2835	3175
	Min.	645					276	400	525	650	774	1146	1455	1623
	End	1132					422	592	933	1273	1614	1954	2635	2975
G01109-SR4	Start	1312			485	919	1136	1353	1787	2221	2655	3089	3957	4391
	Min.	645			199	431	546	661	891	1120	1349	1578	2036	2265
	End	1132			285	719	936	1153	1587	2021	2455	2889	3757	4191
G01110-SR4	Start	1312		763	1051	1626	1914	2202	2777	3353	3928	4504		
	Min.	645		348	501	806	957	1109	1413	1717	2021	2324		
	End	1132		564	851	1427	1714	2002	2578	3153	3729	4304		
G01112-SR4	Start	1312	1224	1636	2048	2873	3286	3698	4523	5348				
	Min.	645	593	811	1028	1464	1681	1899	2334	2770				
	End	1132	1024	1436	1849	2674	3086	3498	4323	5148				
G01114-SR4	Start	1312	1758	2260	2761	3764	4266	4767						
	Min.	645	875	1140	1404	1934	2198	2463						
	End	1132	1559	2060	2562	3565	4066	4568						
G01108-SR3	Start	1536						613	954	1294	1635	1975	2656	2997
	Min.	746						247	429	610	791	972	1331	1511
	End	1293						345	685	1025	1366	1706	2387	2728
G01109-SR3	Start	1536			741	958	1175	1609	2043	2477	2911	3779	4213	
	Min.	746			316	431	547	777	1007	1236	1465	1923	2152	
	End	1293			472	689	906	1340	1774	2208	2642	3510	3944	
G01110-SR3	Start	1536		585	872	1448	1736	2023	2599	3174	3750	4325		
	Min.	746		232	386	692	845	997	1301	1604	1908	2212		
	End	1293		316	604	1179	1467	1755	2330	2905	3481	4056		
G01112-SR3	Start	1536	1045	1458	1870	2695	3107	3520	4344	5169				
	Min.	746	478	697	916	1351	1569	1787	2222	2657				
	End	1293	776	1189	1601	2426	2838	3251	4075	4900				
G01114-SR3	Start	1536	1580	2081	2583	3586	4087	4589						
	Min.	746	762	1027	1292	1822	2086	2351						
	End	1293	1311	1812	2314	3317	3818	4320						
Actuator Model	Spring Torque Start/Min./End (Nm)		Pressure Torque Output Start/Min./End (Nm)											
			3	3.5	4	5	5.5	6	7	8	9	10	12	13
			Operating Pressure (Bar)											



www.Bettis.com

Copyright © Emerson Process Management. The information in this document is subject to change without notice. Updated data sheets can be obtained from our website www.bettis.com or from your nearest Valve Automation Center. USA: +1 281 727 5300 Europe: +31 74 256 1010 Asia-Pacific: +65 6501 4600



EMERSON
Process Management

Data sheet

Sheet No.: GPM 1.06 RevB

Date: August 2010

G-Series

Torque Ratings – (Pneumatic)

All Published Torques are Guaranteed Minimum Values.

Spring-Return Actuators

G-Series (cont.)

Actuator Model	Spring Torque Start/Min./End (Nm)	Operating Pressure (Bar)												
		3	3.5	4	5	5.5	6	7	8	9	10	12	13	
		Pressure Torque Output Start/Min./End (Nm)												
G01108-SR2	Start	1754								1095	1436	1776	2457	2798
	Min.	851								417	542	916	1227	1395
	End	1473								785	1125	1466	2146	2487
G01109-SR2	Start	1754					759	976	1410	1844	2278	2712	3580	4014
	Min.	851					316	476	635	794	953	1428	1807	2036
	End	1473					448	665	1099	1533	1967	2401	3269	3703
G01110-SR2	Start	1754			674	1249	1537	1825	2400	2975	3551	4126		
	Min.	851			266	574	727	880	1185	1488	1792	2096		
	End	1473			363	938	1226	1514	2089	2665	3240	3815		
G01112-SR2	Start	1754	846	1259	1671	2496	2908	3321	4145	4970				
	Min.	851	360	579	798	1235	1453	1671	2106	2541				
	End	1473	535	948	1360	2185	2597	3010	3835	4659				
G01114-SR2	Start	1754	1381	1882	2384	3387	3888	4390						
	Min.	851	644	911	1176	1705	1970	2235						
	End	1473	1070	1572	2073	3076	3578	4079						
G01108-SR1	Start	2087									1219	1559	2240	2581
	Min.	989									380	757	1069	1238
	End	1670									757	1098	1779	2119
G01109-SR1	Start	2087					759	1193	1627	2061	2495	3363	3797	
	Min.	989					312	475	635	794	1272	1653	1882	
	End	1670					297	731	1165	1599	2033	2901	3335	
G01110-SR1	Start	2087			1032	1320	1607	2183	2758	3334	3909			
	Min.	989			413	568	721	1027	1333	1638	1941			
	End	1670			571	858	1146	1721	2297	2872	3448			
G01112-SR1	Start	2087		1041	1454	2279	2691	3104	3928	4753				
	Min.	989		418	639	1078	1297	1516	1952	2387				
	End	1670		580	993	1817	2230	2642	3467	4292				
G01114-SR1	Start	2087	1164	1665	2167	3170	3671	4173						
	Min.	989	484	752	1018	1551	1816	2081						
	End	1670	702	1204	1705	2708	3210	3711						
Actuator Model	Spring Torque Start/Min./End (Nm)	Pressure Torque Output Start/Min./End (Nm)												
		3	3.5	4	5	5.5	6	7	8	9	10	12	13	
		Operating Pressure (Bar)												



www.Bettis.com

Copyright © Emerson Process Management. The information in this document is subject to change without notice. Updated data sheets can be obtained from our website www.bettis.com or from your nearest Valve Automation Center. USA: +1 281 727 5300 Europe: +31 74 256 1010 Asia-Pacific: +65 6501 4600



EMERSON
Process Management

Data sheet

Sheet No.: GPM 1.07 RevB

Date: August 2010

G-Series

Torque Ratings – (Pneumatic)

All Published Torques are Guaranteed Minimum Values.

Spring-Return Actuators

G-Series (cont.)

Actuator Model	Spring Torque Start/Min./End (Nm)	Operating Pressure (Bar)												
		3	3.5	4	5	5.5	6	7	8	9	10	12	13	
		Pressure Torque Output Start/Min./End (Nm)												
G2109-SR6	Start	1463			839	1364	1627	1890	2415	2941	3466	3991	5042	
	Min.	685			342	623	762	902	1181	1458	1736	2013	2568	
	End	1142			485	1010	1273	1536	2061	2586	3112	3637	4688	
G2110-SR6	Start	1463	827	1176	1524	2221	2569	2917	3614	4310	5007			
	Min.	685	336	522	708	1078	1262	1446	1814	2181	2549			
	End	1142	473	821	1170	1866	2215	2563	3260	3956	4653			
G2112-SR6	Start	1463	1733	2232	2731	3730	4229	4728	5727					
	Min.	685	819	1084	1348	1875	2139	2402	2929					
	End	1142	1379	1878	2377	3376	3875	4374	5373					
G2114-SR6	Start	1463	2380	2987	3594	4809	5416							
	Min.	685	1163	1483	1804	2444	2765							
	End	1142	2026	2633	3240	4454	5061							
G2116-SR6	Start	1463	3546	4347	5148									
	Min.	685	1778	2201	2624									
	End	1142	3191	3993	4794									
G2109-SR5	Start	1855			941	1203	1466	1991	2517	3042	3568	4618		
	Min.	891			394	534	674	953	1232	1510	1787	2341		
	End	1525			577	839	1102	1627	2153	2678	3203	4254		
G2110-SR5	Start	1855		752	1100	1797	2145	2494	3190	3887	4583			
	Min.	891		292	480	850	1035	1220	1588	1955	2323			
	End	1525		388	736	1433	1781	2129	2826	3523	4219			
G2112-SR5	Start	1855	1309	1809	2308	3306	3805	4305	5303					
	Min.	891	591	856	1121	1649	1912	2176	2703					
	End	1525	945	1444	1944	2942	3441	3941	4939					
G2114-SR5	Start	1855	1957	2564	3171	4385	4992							
	Min.	891	935	1257	1577	2218	2539							
	End	1525	1592	2200	2807	4021	4628							
G2116-SR5	Start	1855	3129	3932	4735									
	Min.	891	1552	1974	2397									
	End	1525	2758	3559	4360									
Actuator Model	Spring Torque Start/Min./End (Nm)	Pressure Torque Output Start/Min./End (Nm)												
		3	3.5	4	5	5.5	6	7	8	9	10	12	13	
		Operating Pressure (Bar)												



www.Bettis.com

Copyright © Emerson Process Management. The information in this document is subject to change without notice. Updated data sheets can be obtained from our website www.bettis.com or from your nearest Valve Automation Center. USA: +1 281 727 5300 Europe: +31 74 256 1010 Asia-Pacific: +65 6501 4600



Data sheet

Sheet No.: GPM 1.08 RevB

Date: August 2010

G-Series

Torque Ratings – (Pneumatic)

All Published Torques are Guaranteed Minimum Values.

Spring-Return Actuators

G-Series (cont.)

Actuator Model	Spring Torque Start/Min./End (Nm)	Operating Pressure (Bar)											
		3	3.5	4	5	5.5	6	7	8	9	10	12	13
		Pressure Torque Output Start/Min./End (Nm)											
G2109-SR4	Start	2336						1039	1565	2090	2615	3141	4192
	Min.	1119						414	696	975	1254	1534	2088
	End	1912						570	1095	1620	2146	2671	3722
G2110-SR4	Start	2336			1370	1719	2067	2763	3460	4157			
	Min.	1119			593	778	963	1333	1702	2070			
	End	1912			901	1249	1597	2294	2990	3687			
G2112-SR4	Start	2336	1382	1881	2880	3379	3878	4876					
	Min.	1119	599	864	1395	1659	1923	2450					
	End	1912	912	1411	2410	2909	3408	4407					
G2114-SR4	Start	2336	1530	2137	2744	3958	4565						
	Min.	1119	677	1000	1323	1965	2285						
	End	1912	1060	1667	2274	3488	4096						
G2116-SR4	Start	2336	2695	3496	4298								
	Min.	1119	1297	1721	2144								
	End	1912	2225	3027	3828								
G2109-SR3	Start	2728							1781	2307	2832	3883	
	Min.	1295							775	1055	1334	1892	
	End	2191							1188	1714	2239	3290	
G2110-SR3	Start	2728				1410	1758	2455	3151	3848			
	Min.	1295				576	763	1133	1503	1874			
	End	2191				817	1165	1862	2558	3255			
G2112-SR3	Start	2728		1572	2571	3070	3569	4568					
	Min.	1295		664	1195	1460	1726	2254					
	End	2191		979	1978	2477	2976	3975					
G2114-SR3	Start	2728	1828	2435	3649	4256							
	Min.	1295	800	1123	1768	2090							
	End	2191	1235	1842	3056	3663							
G2116-SR3	Start	2728	2386	3188	3989								
	Min.	1295	1097	1523	1949								
	End	2191	1793	2595	3396								
Actuator Model	Spring Torque Start/Min./End (Nm)	Pressure Torque Output Start/Min./End (Nm)											
		3	3.5	4	5	5.5	6	7	8	9	10	12	13
		Operating Pressure (Bar)											



www.Bettis.com

Copyright © Emerson Process Management. The information in this document is subject to change without notice. Updated data sheets can be obtained from our website www.bettis.com or from your nearest Valve Automation Center. USA: +1 281 727 5300 Europe: +31 74 256 1010 Asia-Pacific: +65 6501 4600



Data sheet

Sheet No.: GPM 1.09 RevB

Date: August 2010

G-Series

Torque Ratings – (Pneumatic)

All Published Torques are Guaranteed Minimum Values.

Spring-Return Actuators

G-Series (cont.)

Actuator Model	Spring Torque Start/Min./End (Nm)	Operating Pressure (Bar)												
		3	3.5	4	5	5.5	6	7	8	9	10	12	13	
		Pressure Torque Output Start/Min./End (Nm)												
G2109-SR2	Start	3030									1971	2497	3547	
	Min.	1456									674	1251	1733	
	End	2494									1379	1904	2955	
G2110-SR2	Start	3030					1423	2119	2816	3513				
	Min.	1456					583	955	1325	1696				
	End	2494					830	1527	2223	2920				
G2112-SR2	Start	3030		1237	2235	2735	3234	4232						
	Min.	1456		482	1017	1282	1548	2077						
	End	2494		645	1643	2142	2641	3640						
G2114-SR2	Start	3030		1493	2100	3314	3921							
	Min.	1456		621	945	1590	1913							
	End	2494		900	1507	2722	3329							
G2116-SR2	Start	3030	2051	2852	3654									
	Min.	1456	919	1345	1771									
	End	2494	1459	2260	3061									
G2109-SR1	Start	3502									2131	3182		
	Min.	1666									1012	1493		
	End	2825									1382	2433		
G2110-SR1	Start	3502						1753	2450	3147				
	Min.	1666						713	1086	1456				
	End	2825						1005	1702	2398				
G2112-SR1	Start	3502				2369	2868	3866						
	Min.	1666				1043	1308	1839						
	End	2825				1620	2120	3118						
G2114-SR1	Start	3502		1734	2948	3555								
	Min.	1666		702	1351	1673								
	End	2825		986	2200	2807								
G2116-SR1	Start	3502		2486	3288									
	Min.	1666		1105	1531									
	End	2825		1738	2539									
Actuator Model	Spring Torque Start/Min./End (Nm)	Pressure Torque Output Start/Min./End (Nm)												
		3	3.5	4	5	5.5	6	7	8	9	10	12	13	
		Operating Pressure (Bar)												



www.Bettis.com

Copyright © Emerson Process Management. The information in this document is subject to change without notice. Updated data sheets can be obtained from our website www.bettis.com or from your nearest Valve Automation Center. USA: +1 281 727 5300 Europe: +31 74 256 1010 Asia-Pacific: +65 6501 4600



Data sheet

Sheet No.: GPM 1.10 RevB

Date: August 2010

G-Series

Torque Ratings – (Pneumatic)

All Published Torques are Guaranteed Minimum Values.

Spring-Return Actuators

G-Series (cont.)

Actuator Model	Spring Torque Start/Min./End (Nm)	Operating Pressure (Bar)												
		3	3.5	4	5	5.5	6	7	8	9	10	12	13	
		Pressure Torque Output Start/Min./End (Nm)												
G3110-SR4	Start	4132							2314	3154	3994	4834	6514	7355
	Min.	1935							937	1387	1834	2280	3173	3618
	End	3228							1314	2154	2995	3835	5515	6355
G3112-SR4	Start	4132				2471	3074	3678	4886	6094	7301			
	Min.	1935				1022	1345	1666	2308	2950	3590			
	End	3228				1471	2075	2679	3887	5094	6302			
G3114-SR4	Start	4132				2313	3784	4519	5254	6724	8195			
	Min.	1935				937	1722	2113	2504	3285	4061			
	End	3228				1314	2784	3520	4255	5725	7195			
G3116-SR4	Start	4132	2262	3233	4205	6148	7120	8091						
	Min.	1935	909	1430	1946	2979	3494	4007						
	End	3228	1263	2234	3206	5149	6120	7092						
G3120-SR4	Start	4132	5683	7225										
	Min.	1935	2731	3549										
	End	3228	4684	6225										
G3110-SR3	Start	4760								2678	3518	4358	6038	6878
	Min.	2212								1065	1518	1964	2857	3304
	End	3659								1460	2300	3140	4821	5661
G3112-SR3	Start	4760					2598	3202	4410	5617	6825			
	Min.	2212					1022	1349	1992	2634	3275			
	End	3659					1381	1985	3192	4400	5608			
G3114-SR3	Start	4760					3308	4043	4778	6248	7718			
	Min.	2212					1406	1797	2187	2969	3750			
	End	3659					2090	2825	3560	5031	6501			
G3116-SR3	Start	4760		2757	3729	5672	6644	7615						
	Min.	2212		1108	1630	2663	3179	3695						
	End	3659		1540	2511	4454	5426	6398						
G3120-SR3	Start	4760	5207	6749										
	Min.	2212	2415	3235										
	End	3659	3989	5531										
Actuator Model	Spring Torque Start/Min./End (Nm)	Pressure Torque Output Start/Min./End (Nm)												
		3	3.5	4	5	5.5	6	7	8	9	10	12	13	
		Operating Pressure (Bar)												



www.Bettis.com

Copyright © Emerson Process Management. The information in this document is subject to change without notice. Updated data sheets can be obtained from our website www.bettis.com or from your nearest Valve Automation Center. USA: +1 281 727 5300 Europe: +31 74 256 1010 Asia-Pacific: +65 6501 4600



Data sheet

Sheet No.: GPM 1.11 RevB

Date: August 2010

G-Series

Torque Ratings – (Pneumatic)

All Published Torques are Guaranteed Minimum Values.

Spring-Return Actuators

G-Series (cont.)

Actuator Model	Spring Torque Start/Min./End (Nm)	Operating Pressure (Bar)												
		3	3.5	4	5	5.5	6	7	8	9	10	12	13	
		Pressure Torque Output Start/Min./End (Nm)												
G3110-SR2	Start	5539									2944	3784	5464	6304
	Min.	2550									1118	1574	2470	2916
	End	4178									1440	2280	3960	4801
G3112-SR2	Start	5539					2628	3836	5043	6251				
	Min.	2550					942	1602	2246	2888				
	End	4178					1124	2332	3540	4747				
G3114-SR2	Start	5539			2734	3469	4204	5674	7144					
	Min.	2550			1001	1403	1800	2581	3362					
	End	4178			1230	1965	2700	4170	5640					
G3116-SR2	Start	5539		3155	5098	6070	7041							
	Min.	2550		1232	2275	2791	3308							
	End	4178		1651	3594	4566	5537							
G3120-SR2	Start	5539	4633	6175										
	Min.	2550	2028	2847										
	End	4178	3129	4671										
G3110-SR1	Start	6107									3128	4809	5649	
	Min.	2860									1227	2129	2576	
	End	4771									1652	3333	4173	
G3112-SR1	Start	6107					3180	4388	5596					
	Min.	2860					1255	1905	2547					
	End	4771					1704	2912	4119					
G3114-SR1	Start	6107			2813	3548	5019	6489						
	Min.	2860			1056	1455	2241	3022						
	End	4771			1337	2072	3542	5013						
G3116-SR1	Start	6107		2499	4442	5414	6386							
	Min.	2860		879	1934	2451	2967							
	End	4771		1023	2966	3938	4909							
G3120-SR1	Start	6107	3977	5519										
	Min.	2860	1687	2507										
	End	4771	2501	4043										
Actuator Model	Spring Torque Start/Min./End (Nm)	Pressure Torque Output Start/Min./End (Nm)												
		3	3.5	4	5	5.5	6	7	8	9	10	12	13	
		Operating Pressure (Bar)												



www.Bettis.com

Copyright © Emerson Process Management. The information in this document is subject to change without notice. Updated data sheets can be obtained from our website www.bettis.com or from your nearest Valve Automation Center. USA: +1 281 727 5300 Europe: +31 74 256 1010 Asia-Pacific: +65 6501 4600



Data sheet

Sheet No.: GPM 1.12 RevB

Date: August 2010

G-Series

Torque Ratings – (Pneumatic)

All Published Torques are Guaranteed Minimum Values.

Spring-Return Actuators

G-Series (cont.)

Actuator Model	Spring Torque Start/Min./End (Nm)	Operating Pressure (Bar)												
		3	3.5	4	5	5.5	6	7	8	9	10	12	13	
		Pressure Torque Output Start/Min./End (Nm)												
G4112-SR4	Start	7772							3999	5454	6909	8364	11274	12729
	Min.	3502							1392	2193	2977	3751	5297	6071
	End	5597							1596	3051	4506	5961	8871	10326
G4114-SR4	Start	7772						4457	6231	8005	9779	11553	15101	
	Min.	3502						1650	2615	3560	4503	5446	7331	
	End	5597						2054	3828	5602	7376	9150	12698	
G4116-SR4	Start	7772				5554	6729	7903	10251	12599	14947	17295		
	Min.	3502				2248	2881	3505	4753	6001	7249	8494		
	End	5597				3151	4325	5499	7847	10196	12544	14892		
G4120-SR4	Start	7772	5012	6879	8745	12478	14345	16211						
	Min.	3502	1953	2961	3953	5937	6929	7921						
	End	5597	2609	4475	6342	10075	11941	13808						
G4124-SR4	Start	7772	10112	12828	15545									
	Min.	3502	4680	6123	7567									
	End	5597	7709	10425	13141									
G4112-SR3	Start	9384									5757	7212	10122	11578
	Min.	4194									2156	2946	4503	5277
	End	6639									2724	4179	7089	8544
G4114-SR3	Start	9384							5079	6853	8627	10401	13949	
	Min.	4194							1775	2751	3709	4651	6537	
	End	6639							2046	3820	5594	7368	10916	
G4116-SR3	Start	9384					5577	6751	9099	11447	13795	16144		
	Min.	4194					2055	2696	3959	5207	6455	7703		
	End	6639					2543	3718	6066	8414	10762	13110		
G4120-SR3	Start	9384		5727	7594	11326	13193	15059						
	Min.	4194		2139	3153	5143	6135	7127						
	End	6639		2694	4560	8293	10160	12026						
G4124-SR3	Start	9384	8960	11677	14393									
	Min.	4194	3885	5329	6773									
	End	6639	5927	8643	11360									
Actuator Model	Spring Torque Start/Min./End (Nm)	Pressure Torque Output Start/Min./End (Nm)												
		3	3.5	4	5	5.5	6	7	8	9	10	12	13	
		Operating Pressure (Bar)												



www.Bettis.com

Copyright © Emerson Process Management. The information in this document is subject to change without notice. Updated data sheets can be obtained from our website www.bettis.com or from your nearest Valve Automation Center. USA: +1 281 727 5300 Europe: +31 74 256 1010 Asia-Pacific: +65 6501 4600



EMERSON
Process Management

Data sheet

Sheet No.: GPM 1.13 RevB

Date: August 2010

G-Series

Torque Ratings – (Pneumatic)

All Published Torques are Guaranteed Minimum Values.

Spring-Return Actuators

G-Series (cont.)

Actuator Model	Spring Torque Start/Min./End (Nm)	Operating Pressure (Bar)											
		3	3.5	4	5	5.5	6	7	8	9	10	12	13
		Pressure Torque Output Start/Min./End (Nm)											
G4128-SR3	Start	9384	15694										
	Min.	4194	7465										
	End	6639	12661										
G4112-SR2	Start	11116									5881	8791	10246
	Min.	4962									2018	3617	4400
	End	7844									2264	5174	6629
G4114-SR2	Start	11116							5522	7296	9070	12618	
	Min.	4962							1807	2805	3768	5661	
	End	7844							1905	3679	5453	9001	
G4116-SR2	Start	11116					5419	7768	10116	12464	14812		
	Min.	4962					1746	3061	4331	5579	6827		
	End	7844					1802	4151	6499	8847	11195		
G4120-SR2	Start	11116			6262	9995	11861	13728					
	Min.	4962			2232	4267	5259	6251					
	End	7844			2645	6378	8245	10111					
G4124-SR2	Start	11116	7629	10345	13061								
	Min.	4962	2986	4453	5897								
	End	7844	4012	6728	9445								
G4128-SR2	Start	11116	14363										
	Min.	4962	6588										
	End	7844	10746										
G4114-SR1	Start	12698									7491	11039	
	Min.	5759									2857	4773	
	End	9272									3705	7253	
G4116-SR1	Start	12698							6189	8537	10886	13234	
	Min.	5759							2131	3425	4691	5939	
	End	9272							2403	4751	7099	9447	
G4120-SR1	Start	12698				8417	10283	12150					
	Min.	5759				3359	4371	5363					
	End	9272				4630	6496	8363					
Actuator Model	Spring Torque Start/Min./End (Nm)	Pressure Torque Output Start/Min./End (Nm)											
		3	3.5	4	5	5.5	6	7	8	9	10	12	13
		Operating Pressure (Bar)											



www.Bettis.com

Copyright © Emerson Process Management. The information in this document is subject to change without notice. Updated data sheets can be obtained from our website www.bettis.com or from your nearest Valve Automation Center. USA: +1 281 727 5300 Europe: +31 74 256 1010 Asia-Pacific: +65 6501 4600



Data sheet

Sheet No.: GPM 1.14 RevB

Date: August 2010

G-Series

Torque Ratings – (Pneumatic)

All Published Torques are Guaranteed Minimum Values.

Spring-Return Actuators

G-Series (cont.)

Actuator Model	Spring Torque Start/Min./End (Nm)	Operating Pressure (Bar)											
		3	3.5	4	5	5.5	6	7	8	9	10	12	13
		Pressure Torque Output Start/Min./End (Nm)											
G4124-SR1	Start	12698		8767	11483								
	Min.	5759		3549	5009								
	End	9272		4980	7696								
G4128-SR1	Start	12698	12785										
	Min.	5759	5700										
	End	9272	8998										
G5116-SR4	Start	17372								14859	17861	23866	26868
	Min.	7392								5818	7447	10649	12245
	End	11002								7819	10821	16825	19827
G5120-SR4	Start	17372					16605	21399	26193	30988	35782		
	Min.	7392					6765	9338	11886	14434	16982		
	End	11002					9565	14359	19153	23947	28741		
G5124-SR4	Start	17372			15816	22810	26307	29804	36798				
	Min.	7392			6337	10088	11947	13805	17522				
	End	11002			8775	15769	19266	22763	29757				
G5128-SR4	Start	17372	17537	22486	27436	37335	42284						
	Min.	7392	7271	9916	12547	17808	20438						
	End	11002	10496	15446	20395	30294	35244						
G5132-SR4	Start	17372	26711	33189	39668								
	Min.	7392	12162	15605	19048								
	End	11002	19670	26149	32628								
G5116-SR3	Start	20785											21693 24695
	Min.	8786											9016 10628
	End	12968											13054 16056
G5120-SR3	Start	20785					14432	19226	24020	28815	33609		
	Min.	8786					5036	7678	10270	12818	15366		
	End	12968					5793	10587	15381	20176	24970		
G5124-SR3	Start	20785			13643	20637	24134	27631	34625				
	Min.	8786			4585	8443	10330	12188	15906				
	End	12968			5004	11998	15495	18992	25986				
Actuator Model	Spring Torque Start/Min./End (Nm)	Pressure Torque Output Start/Min./End (Nm)											
		3	3.5	4	5	5.5	6	7	8	9	10	12	13
		Operating Pressure (Bar)											



www.Bettis.com

Copyright © Emerson Process Management. The information in this document is subject to change without notice. Updated data sheets can be obtained from our website www.bettis.com or from your nearest Valve Automation Center. USA: +1 281 727 5300 Europe: +31 74 256 1010 Asia-Pacific: +65 6501 4600



EMERSON
Process Management

Data sheet

Sheet No.: GPM 1.15 RevB

Date: August 2010

G-Series

Torque Ratings – (Pneumatic)

All Published Torques are Guaranteed Minimum Values.

Spring-Return Actuators

G-Series (cont.)

Actuator Model	Spring Torque Start/Min./End (Nm)	Operating Pressure (Bar)											
		3	3.5	4	5	5.5	6	7	8	9	10	12	13
		Pressure Torque Output Start/Min./End (Nm)											
G5128-SR3	Start	20785	15364	20313	25263	35162	40111						
	Min.	8786	5560	8267	10930	16191	18821						
	End	12968	6725	11674	16624	26523	31472						
G5132-SR3	Start	20785	24538	31016	37495								
	Min.	8786	10545	13988	17431								
	End	12968	15899	22377	28856								
G5136-SR3	Start	20785	34935	43147									
	Min.	8786	16071	20435									
	End	12968	26296	34508									
G5116-SR2	Start	25788										19051	22053
	Min.	10667										6604	8290
	End	15358										7524	10526
G5120-SR2	Start	25788								21379	26173	30967	
	Min.	10667								7913	10526	13127	
	End	15358								9851	14646	19440	
G5124-SR2	Start	25788				21492	24989	31983					
	Min.	10667				7977	9883	13667					
	End	15358				9965	13462	20456					
G5128-SR2	Start	25788		17671	22621	32520	37469						
	Min.	10667		5802	8598	13952	16583						
	End	15358		6144	11094	20993	25942						
G5132-SR2	Start	25788	21896	28375	34853								
	Min.	10667	8204	11721	15192								
	End	15358	10369	16848	23326								
G5136-SR2	Start	25788	32294	40505									
	Min.	10667	13832	18196									
	End	15358	20767	28978									
G5120-SR1	Start	28735								18318	23112	27906	
	Min.	12206								6106	8802	11404	
	End	18128								6594	11389	16183	
Actuator Model	Spring Torque Start/Min./End (Nm)	Pressure Torque Output Start/Min./End (Nm)											
		3	3.5	4	5	5.5	6	7	8	9	10	12	13
		Operating Pressure (Bar)											



www.Bettis.com

Copyright © Emerson Process Management. The information in this document is subject to change without notice. Updated data sheets can be obtained from our website www.bettis.com or from your nearest Valve Automation Center. USA: +1 281 727 5300 Europe: +31 74 256 1010 Asia-Pacific: +65 6501 4600



Data sheet

Sheet No.: GPM 1.16 RevB

Date: August 2010

G-Series

Torque Ratings – (Pneumatic)

All Published Torques are Guaranteed Minimum Values.

Spring-Return Actuators

G-Series (cont.)

Actuator Model	Spring Torque Start/Min./End (Nm)		Operating Pressure (Bar)											
			3	3.5	4	5	5.5	6	7	8	9	10	12	13
			Pressure Torque Output Start/Min./End (Nm)											
G5124-SR1	Start	28735					18431	21928	28922					
	Min.	12206					6173	8152	11956					
	End	18128					6708	10205	17199					
G5128-SR1	Start	28735			19560	29459	34409							
	Min.	12206			6820	12247	14899							
	End	18128			7837	17736	22685							
G5132-SR1	Start	28735	18835	25314	31792									
	Min.	12206	6412	9997	13509									
	End	18128	7112	13590	20069									
G5136-SR1	Start	28735	29233	37444										
	Min.	12206	12124	16513										
	End	18128	17509	25721										
G7120-SR4	Start	33079								23109	28954	34800	46491	52337
	Min.	14207								8395	11596	14766	20980	24087
	End	21404								10204	16050	21896	33587	39433
G7124-SR4	Start	33079					23343	27616	36161	44707	53252	261797	78888	
	Min.	14207					8526	10869	15489	20031	24573	29114	38198	
	End	21404					10438	14711	23257	31802	40348	48893	65984	
G7128-SR4	Start	33079			24786	36896	42952	49007	61118	73228				
	Min.	14207			9333	15880	19098	22317	28753	35190				
	End	21404			11881	23992	30047	36102	48213	60324				
G7132-SR4	Start	33079	23934	31866	39798	55662	63594	71526						
	Min.	14207	8859	13177	17422	25854	30069	34285						
	End	21404	11030	18962	26894	42757	50689	58621						
G7136-SR4	Start	33079	36695	46754	56812	76930								
	Min.	14207	15773	21119	26465	37157								
	End	21404	23790	33849	43908	64025								
G7120-SR3	Start	39345									24780	30625	42317	48163
	Min.	16818									8342	11625	17966	21073
	End	25181									9125	14970	26662	32508
Actuator Model	Spring Torque Start/Min./End (Nm)		Pressure Torque Output Start/Min./End (Nm)											
			3	3.5	4	5	5.5	6	7	8	9	10	12	13
			Operating Pressure (Bar)											



www.Bettis.com

Copyright © Emerson Process Management. The information in this document is subject to change without notice. Updated data sheets can be obtained from our website www.bettis.com or from your nearest Valve Automation Center. USA: +1 281 727 5300 Europe: +31 74 256 1010 Asia-Pacific: +65 6501 4600



EMERSON
Process Management

Data sheet

Sheet No.: GPM 1.17 RevB

Date: August 2010

G-Series

Torque Ratings – (Pneumatic)

All Published Torques are Guaranteed Minimum Values.

Spring-Return Actuators

G-Series (cont.)

Actuator Model	Spring Torque Start/Min./End (Nm)	Operating Pressure (Bar)												
		3	3.5	4	5	5.5	6	7	8	9	10	12	13	
		Pressure Torque Output Start/Min./End (Nm)												
G7124-SR3	Start	39345							31987	40532	49077	57623	74714	
	Min.	16818							12364	17002	21559	26101	35184	
	End	25181							16332	24877	33422	41968	59059	
G7128-SR3	Start	39345			32722	38777	44832	56943	69054					
	Min.	16818			12763	16049	19303	25740	32176					
	End	25181			17067	23122	29177	41288	53399					
G7132-SR3	Start	39345		35623	51487	59419	67351							
	Min.	16818		14338	22840	27056	31271							
	End	25181		19969	35832	43764	51696							
G7136-SR3	Start	39345	32520	42579	52638	72755								
	Min.	16818	12653	18105	23451	34143								
	End	25181	16865	26924	36983	57100								
G71T28-SR3	Start	39345	44832	56943	69054									
	Min.	16818	19303	25740	32176									
	End	25181	29177	41288	53399									
G7124-SR2	Start	50028							35608	44153	52699	69789		
	Min.	20644							11970	16770	21408	30578		
	End	29636							13069	21615	30160	47251		
G7128-SR2	Start	50028				33853	39908	52019	64129					
	Min.	20644				10932	14407	21039	27570					
	End	29636				11314	17370	29480	41591					
G7132-SR2	Start	50028		30699	46563	54495	62427							
	Min.	20644		8161	18078	22383	26665							
	End	29636		8161	24025	31957	39889							
G7136-SR2	Start	50028		37655	47713	67831								
	Min.	20644		13140	18702	29537								
	End	29636		15116	25175	45292								
G71T28-SR2	Start	50028	39908	52019	64129									
	Min.	20644	14407	21039	27570									
	End	29636	17370	29480	41591									
Actuator Model	Spring Torque Start/Min./End (Nm)	Pressure Torque Output Start/Min./End (Nm)												
		3	3.5	4	5	5.5	6	7	8	9	10	12	13	
		Operating Pressure (Bar)												



www.Bettis.com

Copyright © Emerson Process Management. The information in this document is subject to change without notice. Updated data sheets can be obtained from our website www.bettis.com or from your nearest Valve Automation Center. USA: +1 281 727 5300 Europe: +31 74 256 1010 Asia-Pacific: +65 6501 4600



EMERSON
Process Management

Data sheet

Sheet No.: GPM 1.18 RevB

Date: August 2010

G-Series

Torque Ratings – (Pneumatic)

All Published Torques are Guaranteed Minimum Values.

Spring-Return Actuators

G-Series (cont.)

Actuator Model	Spring Torque Start/Min./End (Nm)	Operating Pressure (Bar)												
		3	3.5	4	5	5.5	6	7	8	9	10	12	13	
		Pressure Torque Output Start/Min./End (Nm)												
G7124-SR1	Start	59263									38204	46749	63840	
	Min.	24427									11407	16737	26096	
	End	35019									11407	19953	37044	
G7128-SR1	Start	59263						46070	58180					
	Min.	24427						16354	23024					
	End	35019						19273	31384					
G7132-SR1	Start	59263			40614	48546	56478							
	Min.	24427			13213	17747	22100							
	End	35019			13817	21749	29681							
G7136-SR1	Start	59263		41764	61881									
	Min.	24427		13894	25033									
	End	35019		14968	35085									
G71T28-SR1	Start	59263	33959	46070	58180									
	Min.	24427	7162	16354	23024									
	End	35019	7162	19273	31384									
G8124-SR3	Start	57255							35211	45262	55314	75417	85468	
	Min.	25702							13339	18795	24173	34857	40199	
	End	40896							17130	27181	37233	57336	67387	
G8128-SR3	Start	57255				33322	40460	54737	69014	83291	97568			
	Min.	25702				12293	16189	23866	31454	39042	46630			
	End	40896				15241	22379	36656	50933	65210	79487			
G8132-SR3	Start	57255		29699	48424	57787	67149	85874	104599	123324				
	Min.	25702		10255	20511	25487	30463	40415	50366	60316				
	End	40896		11618	30343	39706	49068	67793	86518	105243				
G8136-SR3	Start	57255	37981	49864	73630	85513	97396	121163						
	Min.	25702	14843	21276	33907	40223	46538	59170						
	End	40896	19900	31783	55549	67433	79316	103082						
G8140-SR3	Start	57255	43001	57701	72401	101802	116502							
	Min.	25702	17567	25441	33254	48880	56692							
	End	40896	24920	39620	54320	83721	98421							
Actuator Model	Spring Torque Start/Min./End (Nm)	Pressure Torque Output Start/Min./End (Nm)												
		3	3.5	4	5	5.5	6	7	8	9	10	12	13	
		Operating Pressure (Bar)												



www.Bettis.com

Copyright © Emerson Process Management. The information in this document is subject to change without notice. Updated data sheets can be obtained from our website www.bettis.com or from your nearest Valve Automation Center. USA: +1 281 727 5300 Europe: +31 74 256 1010 Asia-Pacific: +65 6501 4600



Data sheet

Sheet No.: GPM 1.19 RevB

Date: August 2010

G-Series

Torque Ratings – (Pneumatic)

All Published Torques are Guaranteed Minimum Values.

Spring-Return Actuators

G-Series (cont.)

Actuator Model	Spring Torque Start/Min./End (Nm)		Operating Pressure (Bar)														
			3	3.5	4	5	5.5	6	7	8	9	10	12	13			
			Pressure Torque Output Start/Min./End (Nm)														
G81T32-SR3	Start	57255	67149	85874	104599												
	Min.	25702	30463	40415	50366												
	End	40896	49068	67793	86518												
G81T36-SR3	Start	57255	97396	121163													
	Min.	25702	46538	59170													
	End	40896	79316	103082													
G8124-SR2	Start	67425										47381	67484	77536			
	Min.	30242										18889	29685	35027			
	End	48073										25993	46096	56147			
G8128-SR2	Start	67425							46805	61082	75359	89635					
	Min.	30242							18576	26282	33870	41458					
	End	48073							25416	39693	53970	68247					
G8132-SR2	Start	67425			40492	49854	59217	77942	96667	115392							
	Min.	30242			15146	20231	25291	35243	45195	55147							
	End	48073			19103	28466	37828	56553	75278	94003							
G8136-SR2	Start	67425		41931	65698	77581	89464	113230									
	Min.	30242		15931	28736	35051	41367	53998									
	End	48073		20543	44309	56192	68076	91842									
G8140-SR2	Start	67425	35068	49768	64469	93869	108570										
	Min.	30242	12096	20185	28082	43708	51521										
	End	48073	13680	28380	43080	72481	87181										
G81T32-SR2	Start	67425	59217	77942	96667												
	Min.	30242	25291	35243	45195												
	End	48073	37828	56553	75278												
G81T36-SR2	Start	67425	89464	113230													
	Min.	30242	41367	53998													
	End	48073	68076	91842													
G8124-SR1	Start	83654												58045	68096		
	Min.	36645												21964	27420		
	End	56614												28158	38210		
Actuator Model	Spring Torque Start/Min./End (Nm)		Pressure Torque Output Start/Min./End (Nm)														
			3	3.5	4	5	5.5	6	7	8	9	10	12	13			
			Operating Pressure (Bar)														



www.Bettis.com

Copyright © Emerson Process Management. The information in this document is subject to change without notice. Updated data sheets can be obtained from our website www.bettis.com or from your nearest Valve Automation Center. USA: +1 281 727 5300 Europe: +31 74 256 1010 Asia-Pacific: +65 6501 4600



Data sheet

Sheet No.: GPM 1.20 RevB

Date: August 2010

G-Series

Torque Ratings – (Pneumatic)

All Published Torques are Guaranteed Minimum Values.

Spring-Return Actuators

G-Series (cont.)

Actuator Model	Spring Torque Start/Min./End (Nm)		Operating Pressure (Bar)											
			3	3.5	4	5	5.5	6	7	8	9	10	12	13
			Pressure Torque Output Start/Min./End (Nm)											
G8128-SR1	Start	83654								51642	65919	80196		
	Min.	36645								18387	26238	33985		
	End	56614								21756	36033	50310		
G8132-SR1	Start	83654						49777	68502	87227	105952			
	Min.	36645						17338	27640	37722	47674			
	End	56614						19891	38616	57341	76066			
G8136-SR1	Start	83654				56258	68142	80025	103791					
	Min.	36645				20982	27444	33894	46525					
	End	56614				26372	38255	50138	73905					
G8140-SR1	Start	83654			55029	84430	99130							
	Min.	36645			20291	36235	44048							
	End	56614			25143	54544	69244							
G81T32-SR1	Start	83654	49777	68502	87227									
	Min.	36645	17338	27640	37722									
	End	56614	19891	38616	57341									
G81T36-SR1	Start	83654	80025	103791										
	Min.	36645	33894	46525										
	End	56614	50138	73905										
G10128-SR4	Start	113922								74116	92685	111253	148389	166957
	Min.	46963								22631	33767	43949	63986	73855
	End	67340								22631	41200	59768	96904	115472
G10132-SR4	Start	113922						72009	96415	120822	145228	169634	218447	242853
	Min.	46963						20524	35865	49143	62306	75278	101220	114191
	End	67340						20524	44931	69337	93743	118150	166962	191369
G10136-SR4	Start	113922				80686	96197	111709	142732	173755	204778	235801		
	Min.	46963				26956	35742	44196	60980	77467	93955	110443		
	End	67340				29201	44712	60224	91247	122270	153293	184316		
G10140-SR4	Start	113922			79243	117661	136870	156079	194497	232915				
	Min.	46963			26103	47427	57853	68073	88491	108909				
	End	67340			27758	66176	85385	104594	143012	181430				
Actuator Model	Spring Torque Start/Min./End (Nm)		Pressure Torque Output Start/Min./End (Nm)											
			3	3.5	4	5	5.5	6	7	8	9	10	12	13
			Operating Pressure (Bar)											



www.Bettis.com

Copyright © Emerson Process Management. The information in this document is subject to change without notice. Updated data sheets can be obtained from our website www.bettis.com or from your nearest Valve Automation Center. USA: +1 281 727 5300 Europe: +31 74 256 1010 Asia-Pacific: +65 6501 4600



EMERSON
Process Management

Data sheet

Sheet No.: GPM 1.21 RevB

Date: August 2010

G-Series

Torque Ratings – (Pneumatic)

All Published Torques are Guaranteed Minimum Values.

Spring-Return Actuators

G-Series (cont.)

Actuator Model	Spring Torque Start/Min./End (Nm)	Operating Pressure (Bar)											
		3	3.5	4	5	5.5	6	7	8	9	10	12	13
		Pressure Torque Output Start/Min./End (Nm)											
G101T32-SR4	Start	113922	72009	96415	120822	169634	194041	218447					
	Min.	46963	20524	35865	49143	75278	88249	101220					
	End	67340	20524	44931	69337	118150	142556	166962					
G101T36-SR4	Start	113922	111709	142732	173755	235801							
	Min.	46963	44196	60980	77467	110443							
	End	67340	60224	91247	122270	184316							
G101T40-SR4	Start	113922	156079	194497	232915								
	Min.	46963	68073	88491	108909								
	End	67340	104594	143012	181430								
G10128-SR3	Start	141885								97298	134435	153003	
	Min.	57244								28861	51120	61198	
	End	79966								28861	65997	84566	
G10132-SR3	Start	141885							106868	131274	155680	204493	228899
	Min.	57244							35604	49404	62651	88905	101876
	End	79966							38430	62837	87243	136056	160462
G10136-SR3	Start	141885					97754	128777	159800	190823	221846		
	Min.	57244					29317	48020	64887	81640	98128		
	End	79966					29317	60340	91363	122386	153409		
G10140-SR3	Start	141885			103707	122916	142125	180543	218961				
	Min.	57244			33734	44724	55294	76146	96594				
	End	79966			35269	54478	73687	112105	150523				
G101T32-SR3	Start	141885		106868	155680	180087	204493						
	Min.	57244		35604	62651	75898	88905						
	End	79966		38430	87243	111649	136056						
G101T36-SR3	Start	141885	97754	128777	159800	221846							
	Min.	57244	29317	48020	64887	98128							
	End	79966	29317	60340	91363	153409							
G101T40-SR3	Start	141885	142125	180543	218961								
	Min.	57244	55294	76146	96594								
	End	79966	73687	112105	150523								
Actuator Model	Spring Torque Start/Min./End (Nm)	Pressure Torque Output Start/Min./End (Nm)											
		3	3.5	4	5	5.5	6	7	8	9	10	12	13
		Operating Pressure (Bar)											



www.Bettis.com

Copyright © Emerson Process Management. The information in this document is subject to change without notice.

Updated data sheets can be obtained from our website www.bettis.com or from your nearest Valve Automation Center.

USA: +1 281 727 5300 Europe: +31 74 256 1010 Asia-Pacific: +65 6501 4600



EMERSON
Process Management

Data sheet

Sheet No.: GPM 1.22 RevB

Date: August 2010

G-Series

Torque Ratings – (Pneumatic)

All Published Torques are Guaranteed Minimum Values.

Spring-Return Actuators

G-Series (cont.)

Actuator Model	Spring Torque Start/Min./End (Nm)	Operating Pressure (Bar)												
		3	3.5	4	5	5.5	6	7	8	9	10	12	13	
		Pressure Torque Output Start/Min./End (Nm)												
G10128-SR2	Start	155488											117617	136185
	Min.	65143											42379	52639
	End	95182											50962	69530
G10132-SR2	Start	155488								114456	138862	187675	212081	
	Min.	65143								40602	54092	80482	93453	
	End	95182								47802	72208	121021	145427	
G10136-SR2	Start	155488						111960	142983	174005	205028			
	Min.	65143						39198	56328	73167	89705			
	End	95182						45305	76328	107351	138374			
G10140-SR2	Start	155488				106098	125307	163725	202143					
	Min.	65143				35868	46704	67587	88171					
	End	95182				39443	58652	97070	135488					
G101T32-SR2	Start	155488			90050	138862	163269	187675						
	Min.	65143			23395	54092	67339	80482						
	End	95182			23395	72208	96614	121021						
G101T36-SR2	Start	155488		111960	142983	205028								
	Min.	65143		39198	56328	89705								
	End	95182		45305	76328	138374								
G101T40-SR2	Start	155488	125307	163725	202143									
	Min.	65143	46704	67587	88171									
	End	95182	58652	97070	135488									
G10132-SR1	Start	192709									118925	167738	192144	
	Min.	79221									31069	62997	76244	
	End	113220									31069	79882	104288	
G10136-SR1	Start	192709							123046	154069	185091			
	Min.	79221							35189	55320	72415			
	End	113220							35189	66212	97235			
G10140-SR1	Start	192709						143788	182206					
	Min.	79221						49538	70849					
	End	113220						55932	94350					
Actuator Model	Spring Torque Start/Min./End (Nm)	Pressure Torque Output Start/Min./End (Nm)												
		3	3.5	4	5	5.5	6	7	8	9	10	12	13	
		Operating Pressure (Bar)												



www.Bettis.com

Copyright © Emerson Process Management. The information in this document is subject to change without notice. Updated data sheets can be obtained from our website www.bettis.com or from your nearest Valve Automation Center. USA: +1 281 727 5300 Europe: +31 74 256 1010 Asia-Pacific: +65 6501 4600



Data sheet

Sheet No.: GPM 1.23 RevB

Date: August 2010

G-Series

Torque Ratings – (Pneumatic)

All Published Torques are Guaranteed Minimum Values.

Spring-Return Actuators

G-Series (cont.)

Actuator Model	Spring Torque Start/Min./End (Nm)	Operating Pressure (Bar)											
		3	3.5	4	5	5.5	6	7	8	9	10	12	13
		Pressure Torque Output Start/Min./End (Nm)											
G101T32-SR1	Start	192709				118925	143332	167738					
	Min.	79221				31069	49282	62997					
	End	113220				31069	55476	79882					
G101T36-SR1	Start	192709		123063	185113								
	Min.	79221		35189	72415								
	End	113220		35189	97235								
G101T40-SR1	Start	192709	143788	182206									
	Min.	79221	49538	70849									
	End	113220	55932	94350									
G13140-SR4	Start	249866						193160	242228	291296	340364	438500	487569
	Min.	99270						63485	91298	117931	144525	196682	222760
	End	136001						67309	116377	165445	214513	312650	361718
G13144-SR4	Start	249866				177356	207144	266721	326298	385875	445452		
	Min.	99270				51505	71621	104592	136929	168713	200376		
	End	136001				51505	81293	140870	200447	260024	319601		
G13148-SR4	Start	249866			205115	240658	276202	347288	418374	489461			
	Min.	99270			70480	90446	109738	148205	185985	223766			
	End	136001			79264	114808	150351	221437	292523	363610			
G13152-SR4	Start	249866		184070	267667	309466	351264	434861	518457				
	Min.	99270		58028	105106	127793	150318	194747	239177				
	End	136001		58220	141816	183615	225413	309010	392607				
G131T40-SR4	Start	249866	193160	242228	340364	389432	438500						
	Min.	99270	63485	91298	144525	170603	196682						
	End	136001	67309	116377	214513	263581	312650						
G131T44-SR4	Start	249866	207144	266721	326298	445452	505028						
	Min.	99270	71621	104592	136929	200376	232039						
	End	136001	81293	140870	200447	319601	379177						
G131T48-SR4	Start	249866	276202	347288	418374								
	Min.	99270	109738	148205	185985								
	End	136001	150351	221437	292523								
Actuator Model	Spring Torque Start/Min./End (Nm)	Pressure Torque Output Start/Min./End (Nm)											
		3	3.5	4	5	5.5	6	7	8	9	10	12	13
		Operating Pressure (Bar)											



www.Bettis.com

Copyright © Emerson Process Management. The information in this document is subject to change without notice. Updated data sheets can be obtained from our website www.bettis.com or from your nearest Valve Automation Center. USA: +1 281 727 5300 Europe: +31 74 256 1010 Asia-Pacific: +65 6501 4600



Data sheet

Sheet No.: GPM 1.24 RevB

Date: August 2010

G-Series

Torque Ratings – (Pneumatic)

All Published Torques are Guaranteed Minimum Values.

Spring-Return Actuators

G-Series (cont.)

Actuator Model	Spring Torque Start/Min./End (Nm)		Operating Pressure (Bar)															
			3	3.5	4	5	5.5	6	7	8	9	10	12	13				
			Pressure Torque Output Start/Min./End (Nm)															
G131T52-SR4	Start	249866	351264	434861	518457													
	Min.	99270	150318	194747	239177													
	End	136001	225413	309010	392607													
G13140-SR3	Start	308129										259098	308166	406303	455371			
	Min.	121594										89359	116809	170075	196343			
	End	165132										101049	150118	248254	297322			
G13144-SR3	Start	308129							234523	294100	353677	413254						
	Min.	121594							74962	109043	141511	173847						
	End	165132							76474	136051	195628	255205						
G13148-SR3	Start	308129						244004	315090	386176	457263							
	Min.	121594						80570	120567	159151	197349							
	End	165132						85955	157041	228128	299214							
G13152-SR3	Start	308129			235469	277268	319066	402663	486260									
	Min.	121594			75522	99577	122725	168099	212760									
	End	165132			77420	119219	161017	244614	328211									
G131T40-SR3	Start	308129		210030	308166	357234	406303											
	Min.	121594		51981	116809	143442	170075											
	End	165132		51981	150118	199186	248254											
G131T44-SR3	Start	308129		234523	294100	413254	472830											
	Min.	121594		74962	109043	173847	205622											
	End	165132		76474	136051	255205	314782											
G131T48-SR3	Start	308129	244004	315090	386176													
	Min.	121594	80570	120567	159151													
	End	165132	85955	157041	228128													
G131T52-SR3	Start	308129	319066	402663	486260													
	Min.	121594	122725	168099	212760													
	End	165132	161017	244614	328211													
G13140-SR2	Start	369313											269669	367805	416873			
	Min.	146390											82493	139881	166513			
	End	199963											82493	180629	229697			
Actuator Model	Spring Torque Start/Min./End (Nm)		Pressure Torque Output Start/Min./End (Nm)															
			3	3.5	4	5	5.5	6	7	8	9	10	12	13				
			Operating Pressure (Bar)															



www.Bettis.com

Copyright © Emerson Process Management. The information in this document is subject to change without notice. Updated data sheets can be obtained from our website www.bettis.com or from your nearest Valve Automation Center. USA: +1 281 727 5300 Europe: +31 74 256 1010 Asia-Pacific: +65 6501 4600



EMERSON
Process Management

Data sheet

Sheet No.: GPM 1.25 RevB

Date: August 2010

G-Series

Torque Ratings – (Pneumatic)

All Published Torques are Guaranteed Minimum Values.

Spring-Return Actuators

G-Series (cont.)

Actuator Model	Spring Torque Start/Min./End (Nm)	Operating Pressure (Bar)												
		3	3.5	4	5	5.5	6	7	8	9	10	12	13	
		Pressure Torque Output Start/Min./End (Nm)												
G13144-SR2	Start	369313									315179	374756		
	Min.	146390									110512	143653		
	End	199963									128003	187580		
G13148-SR2	Start	369313						276593	347679	418765				
	Min.	146390						88092	128789	167540				
	End	199963						89416	160503	231589				
G13152-SR2	Start	369313						280569	364165	447762				
	Min.	146390						90448	137905	183279				
	End	199963						93392	176989	260586				
G131T40-SR2	Start	369313				269669	318737	367805						
	Min.	146390				82493	112513	139881						
	End	199963				82493	131561	180629						
G131T44-SR2	Start	369313			255603	374756	434333							
	Min.	146390			68426	143653	175990							
	End	199963			68426	187580	247157							
G131T48-SR2	Start	369313		276593	347679									
	Min.	146390		88092	128789									
	End	199963		89416	160503									
G131T52-SR2	Start	369313	280569	364165	447762									
	Min.	146390	90448	137905	183279									
	End	199963	93392	176989	260586									
G13140-SR1	Start	427576											335607	384675
	Min.	168713											110014	138115
	End	229094											116233	165301
G13144-SR1	Start	427576											342558	
	Min.	168713											114125	
	End	229094											123184	
G13148-SR1	Start	427576											386568	
	Min.	168713											139179	
	End	229094											167193	
Actuator Model	Spring Torque Start/Min./End (Nm)	Pressure Torque Output Start/Min./End (Nm)												
		3	3.5	4	5	5.5	6	7	8	9	10	12	13	
		Operating Pressure (Bar)												



www.Bettis.com

Copyright © Emerson Process Management. The information in this document is subject to change without notice. Updated data sheets can be obtained from our website www.bettis.com or from your nearest Valve Automation Center. USA: +1 281 727 5300 Europe: +31 74 256 1010 Asia-Pacific: +65 6501 4600



Data sheet

Sheet No.: GPM 1.26 RevB

Date: August 2010

G-Series

Torque Ratings – (Pneumatic)

All Published Torques are Guaranteed Minimum Values.

Spring-Return Actuators

G-Series (cont.)

Actuator Model	Spring Torque Start/Min./End (Nm)		Operating Pressure (Bar)												
			3	3.5	4	5	5.5	6	7	8	9	10	12	13	
			Pressure Torque Output Start/Min./End (Nm)												
G13152-SR1	Start	427576								331968	415564				
	Min.	168713								107861	155486				
	End	229094								112593	196190				
G131T40-SR1	Start	427576							335607						
	Min.	168713							110014						
	End	229094							116233						
G131T44-SR1	Start	427576				342558	402135								
	Min.	168713				114125	147934								
	End	229094				123184	182761								
G131T48-SR1	Start	427576			315481										
	Min.	168713			96107										
	End	229094			96107										
G131T52-SR1	Start	427576		331968	415564										
	Min.	168713		107861	155486										
	End	229094		112593	196190										
Actuator Model	Spring Torque Start/Min./End (Nm)		Pressure Torque Output Start/Min./End (Nm)												
			3	3.5	4	5	5.5	6	7	8	9	10	12	13	
			Operating Pressure (Bar)												



www.Bettis.com

Copyright © Emerson Process Management. The information in this document is subject to change without notice. Updated data sheets can be obtained from our website www.bettis.com or from your nearest Valve Automation Center. USA: +1 281 727 5300 Europe: +31 74 256 1010 Asia-Pacific: +65 6501 4600



Data sheet

Sheet No.: GPM 2.01 RevB

Date: August 2010

G-Series

Performance Data – (Pneumatic)

Double-Acting Actuators G-Series

Actuator Model	Displacement (cu cm) ▲		Maximum Operating Pressure (MOP)* (Bar)	Approximate Weight of Actuator (kg)
	Inboard	Outboard		
G01108	5981	5620.7	13.2	70.3
G01109	7620	7128.4	10.4	67.6
G01110	10176.3	9504.5	7.9	73.5
G01112	14715.5	13683.1	5.5	78.0
G01114	17960.2	16632.8	4.6	83.9
G2109	7620	7128.4	12.9	77.6
G2110	10176.4	9504.5	9.7	86
G2112	14715.6	13683	6.9	92
G2114	17960	16633	5.6	96.6
G2116	23646.5	21893	4.2	114.3
G3110	12306.7	12569	13.8	112.9
G3112	17911	18091.3	9.8	124.7
G3114	21909.5	22024	8.1	129.3
G3116	28448	27809	6.2	143.3
G3120	48178	43835.4	3.9	184
G4112	22188	20992	13.8	199
G4114	26973	25580	13.4	208
G4116	35593	33872	10.1	204
G4120	47277	53700	6.3	230
G4124	84328	77691	4.3	282
G4128	115611	110547	3.1	371
G5116	45261	42656	13.8	413
G5120	71825	68121	11.3	394
G5124	102108	100404	7.7	442
G5128	142059	141896	5.5	519
G5132	192040	171573	4.2	699
G5136	239054	214802	3.3	821
G7120	77675	77134	13.8	751
G7124	119904	111858	12.3	754
G7128	177341	176980	8.7	850
G7132	231484	220259	6.6	981
G7136	280252	243364	5.2	1117

▲ Maximum volume including cavity required for calculating consumption per stroke.

* **Maximum Operating Pressure (MOP)** – The maximum recommended pressure at which the actuator should be operated.

Maximum Relief Valve Set Pressure (MRP) – The maximum recommended relief pressure valve set point.

MRP is calculated by multiplying MOP times 1.15 for G-Series actuators.

Maximum System Pressure (MSP) – The maximum allowable system supply pressure to which an actuator may be exposed.

MSP is calculated by multiplying MOP times 1.25 for G-Series actuators.

• For dual cylinder models this volume equals the volume of one inboard plus one outboard.

BETTIS™

www.Bettis.com

Copyright © Emerson Process Management. The information in this document is subject to change without notice.

Updated data sheets can be obtained from our website www.bettis.com or from your nearest Valve Automation Center.

USA: +1 281 727 5300 Europe: +31 74 256 1010 Asia-Pacific: +65 6501 4600



EMERSON™
Process Management

Data sheet

Sheet No.: GPM 2.02 RevB

Date: August 2010

G-Series

Performance Data – (Pneumatic)

Double-Acting Actuators

G-Series (cont.)

Actuator Model	Displacement (cu cm) ▲		Maximum Operating Pressure (MOP)* (Bar)	Approximate Weight of Actuator (kg)
	Inboard	Outboard		
• G71228	354321	354321	4.3	1200
G8124	133620	131785	13.8	1120
G8128	215293	195350	11.9	1229
G8132	281710	258768	9.0	1276
G8136	356992	329380	7.1	1492
G8140	441123	409562	5.8	1605
• G81232	540478	540478	4.5	1746
• G81236	686372	686372	3.6	2109
G10128	302538	278170	13.8	1724
G10132	348586	320367	13.8	1791
G10136	442090	417723	10.9	2018
G10140	546591	519126	8.8	2140
• G101232	668953	668953	6.9	2409
• G101236	859813	859813	5.5	2862
• G101240	1065700	1065700	4.4	3107
G13140	725029	719785	13.8	3415
G13144	884213	873004	11.4	3603
G13148	1058555	1040824	9.7	3830
G13152	1248055	1223262	8.3	4061
• G131240	1444815	1444815	6.9	4534
• G131244	1757218	1757218	5.7	4927
• G131248	2099380	2099380	4.8	5364
• G131252	2471317	2471317	4.1	5844

▲ Maximum volume including cavity required for calculating consumption per stroke.

* **Maximum Operating Pressure (MOP)** – The maximum recommended pressure at which the actuator should be operated.

Maximum Relief Valve Set Pressure (MRP) – The maximum recommended relief pressure valve set point.

MRP is calculated by multiplying MOP times 1.15 for G-Series actuators.

Maximum System Pressure (MSP) – The maximum allowable system supply pressure to which an actuator may be exposed.

MSP is calculated by multiplying MOP times 1.25 for G-Series actuators.

• For dual cylinder models this volume equals the volume of one inboard plus one outboard.

BETTIS™

www.Bettis.com

Copyright © Emerson Process Management. The information in this document is subject to change without notice.

Updated data sheets can be obtained from our website www.bettis.com or from your nearest Valve Automation Center.

USA: +1 281 727 5300 Europe: +31 74 256 1010 Asia-Pacific: +65 6501 4600



EMERSON™
Process Management

Data sheet

Sheet No.: GHM 2.03 RevB

Date: August 2010

G-Series

Performance Data – (Hydraulic)

Spring-Return Actuators

G-Series

Actuator Model	Volume Per Stroke (cu cm) ▲	Maximum Operating Pressure (MOP)* (Bar)	Approximate Weight of Actuator (kg)
G01108-SR4	5981	13.2	133.8
SR3	5981	13.2	137.9
SR2	5981	13.2	140.2
SR1	5981	13.2	141.1
G01109-SR4	7620	13.8	131.1
SR3	7620	13.8	135.2
SR2	7620	13.8	137.4
SR1	7620	13.8	138.3
G01110-SR4	10176	11.5	137.0
SR3	10176	11.5	141.1
SR2	10176	11.5	143.3
SR1	10176	11.5	144.2
G01112-SR4	14716	8.0	141.5
SR3	14716	8.0	145.6
SR2	14716	8.0	147.9
SR1	14716	8.0	148.8
G01114-SR4	17960	6.7	147.4
SR3	17960	6.7	151.5
SR2	17960	6.7	153.8
SR1	17960	6.7	154.7
G2109-SR6	7620	12.9	147
SR5	7620	12.9	165
SR4	7620	12.9	165
SR3	7620	12.9	172
SR2	7620	12.9	172
SR1	7620	12.9	176.4
G2110-SR6	10176	9.7	156
SR5	10176	9.7	174
SR4	10176	9.7	174
SR3	10176	9.7	181
SR2	10176	9.7	181
SR1	10176	9.7	185.5
G2112-SR6	14716	6.9	161.5
SR5	14716	6.9	179.6
SR4	14716	6.9	179.6
SR3	14716	6.9	186.4
SR2	14716	6.9	186.4
SR1	14716	6.9	191
Actuator Model	Volume Per Stroke (cu cm) ▲	Maximum Operating Pressure (MOP)* (Bar)	Approximate Weight of Actuator (kg)

Actuator Model	Volume Per Stroke (cu cm) ▲	Maximum Operating Pressure (MOP)* (Bar)	Approximate Weight of Actuator (kg)
G2114-SR6	17960	5.6	166
SR5	17960	5.6	184
SR4	17960	5.6	184
SR3	17960	5.6	191
SR2	17960	5.6	191
SR1	17960	5.6	195.5
G2116-SR6	23647	4.2	183.7
SR5	23647	4.2	202
SR4	23647	4.2	202
SR3	23647	4.2	208.6
SR2	23647	4.2	208.6
SR1	23647	4.2	213
G3110-SR4	12307	13.8	238
SR3	12307	13.8	245
SR2	12307	13.8	251.7
SR1	12307	13.8	256
G3112-SR4	17911	9.8	250
SR3	17911	9.8	256.7
SR2	17911	9.8	263.5
SR1	17911	9.8	268
G3114-SR4	21910	8.1	254.4
SR3	21910	8.1	261
SR2	21910	8.1	268
SR1	21910	8.1	272.6
G3116-SR4	28448	6.2	268.5
SR3	28448	6.2	275.3
SR2	28448	6.2	282
SR1	28448	6.2	286.6
G3120-SR4	48178	3.9	309.3
SR3	48178	3.9	316
SR2	48178	3.9	323
SR1	48178	3.9	327.4
G4112-SR4	20992	13.8	401
SR3	20992	13.8	428
SR2	20992	13.8	435
Actuator Model	Volume Per Stroke (cu cm) ▲	Maximum Operating Pressure (MOP)* (Bar)	Approximate Weight of Actuator (kg)

▲ Maximum volume including cavity required for calculating consumption per stroke.

* **Maximum Operating Pressure (MOP)** – The maximum recommended pressure at which the actuator should be operated.

Maximum Relief Valve Set Pressure (MRP) – The maximum recommended relief pressure valve set point.

MRP is calculated by multiplying MOP times 1.15 for G-Series actuators.

Maximum System Pressure (MSP) – The maximum allowable system supply pressure to which an actuator may be exposed.

MSP is calculated by multiplying MOP times 1.25 for G-Series actuators.

• For dual cylinder models this volume equals the volume of one inboard plus one outboard.

BETTIS[™]

www.Bettis.com

Copyright © Emerson Process Management. The information in this document is subject to change without notice.

Updated data sheets can be obtained from our website www.bettis.com or from your nearest Valve Automation Center.

USA: +1 281 727 5300 Europe: +31 74 256 1010 Asia-Pacific: +65 6501 4600



EMERSON[™]
Process Management

Data sheet

Sheet No.: GHM 2.04 RevB

Date: August 2010

G-Series

Performance Data – (Hydraulic)

Spring-Return Actuators

G-Series (cont.)

Actuator Model	Volume Per Stroke (cu cm) ▲	Maximum Operating Pressure (MOP)* (Bar)	Approximate Weight of Actuator (kg)
G4114-SR4	25580	13.4	410
SR3	25580	13.4	436
SR2	25580	13.4	444
SR1	25580	13.4	448
G4116-SR4	33872	10.1	426
SR3	33872	10.1	453
SR2	33872	10.1	460
SR1	33872	10.1	467
G4120-SR4	53700	6.3	440
SR3	53700	6.3	467
SR2	53700	6.3	474
SR1	53700	6.3	480
G4124-SR4	77691	4.3	492
SR3	77691	4.3	519
SR2	77691	4.3	526
SR1	77691	4.3	533
G4128-SR3	110547	3.1	600
SR2	110547	3.1	603
SR1	110547	3.1	607
G5116-SR4	42656	13.8	770
SR3	42656	13.8	799
SR2	42656	13.8	825
G5120-SR4	68121	11.3	776
SR3	68121	11.3	805
SR2	68121	11.3	830
SR1	68121	11.3	828
G5124-SR4	100404	7.7	823
SR3	100404	7.7	853
SR2	100404	7.7	878
SR1	100404	7.7	875
G5128-SR4	141896	5.5	899
SR3	141896	5.5	928
SR2	141896	5.5	953
SR1	141896	5.5	951
Actuator Model	Volume Per Stroke (cu cm) ▲	Maximum Operating Pressure (MOP)* (Bar)	Approximate Weight of Actuator (kg)

Actuator Model	Volume Per Stroke (cu cm) ▲	Maximum Operating Pressure (MOP)* (Bar)	Approximate Weight of Actuator (kg)
G5132-SR4	171573	4.2	1080
SR3	171573	4.2	1109
SR2	171573	4.2	1134
SR1	171573	4.2	1132
G5136-SR3	214785	3.3	1231
SR2	214785	3.3	1256
SR1	214785	3.3	1254
G7120-SR4	77134	13.8	1239
SR3	77134	13.8	1176
G7124-SR4	111858	12.3	1245
SR3	111858	12.3	1183
SR2	111858	12.3	1295
SR1	111858	12.3	1232
G7128-SR4	176980	8.7	1341
SR3	176980	8.7	1278
SR2	176980	8.7	1390
SR1	176980	8.7	1327
G7132-SR4	220259	6.6	1472
SR3	220259	6.6	1410
SR2	220259	6.6	1521
SR1	220259	6.6	1458
G7136-SR4	243364	5.2	1608
SR3	243364	5.2	1546
SR2	243364	5.2	1657
SR1	243364	5.2	1594
G71T28-SR3	353961	4.3	2021
SR2	353961	4.3	2185
SR1	353961	4.3	2146
G8124-SR3	132784	13.8	2252
SR2	132784	13.8	2325
SR1	132784	13.8	2457
G8128-SR3	195350	11.9	2361
SR2	195350	11.9	2433
SR1	195350	11.9	2565
G8132-SR3	258768	9.0	2413
SR2	258768	9.0	2486
SR1	258768	9.0	2618
Actuator Model	Volume Per Stroke (cu cm) ▲	Maximum Operating Pressure (MOP)* (Bar)	Approximate Weight of Actuator (kg)

▲ Maximum volume including cavity required for calculating consumption per stroke.

* **Maximum Operating Pressure (MOP)** – The maximum recommended pressure at which the actuator should be operated.

Maximum Relief Valve Set Pressure (MRP) – The maximum recommended relief pressure valve set point.

MRP is calculated by multiplying MOP times 1.15 for G-Series actuators.

Maximum System Pressure (MSP) – The maximum allowable system supply pressure to which an actuator may be exposed.

MSP is calculated by multiplying MOP times 1.25 for G-Series actuators.

• For dual cylinder models this volume equals the volume of one inboard plus one outboard.

BETTIS[™]

www.Bettis.com

Copyright © Emerson Process Management. The information in this document is subject to change without notice.

Updated data sheets can be obtained from our website www.bettis.com or from your nearest Valve Automation Center.

USA: +1 281 727 5300 Europe: +31 74 256 1010 Asia-Pacific: +65 6501 4600



EMERSON[™]
Process Management

Data sheet

Sheet No.: GHM 2.05 RevB

Date: August 2010

G-Series

Performance Data – (Hydraulic)

Spring-Return Actuators

G-Series (cont.)

Actuator Model	Volume Per Stroke (cu cm) ▲	Maximum Operating Pressure (MOP)* (Bar)	Approximate Weight of Actuator (kg)
G8136-SR3	329380	7.1	2624
SR2	329380	7.1	2697
SR1	329380	7.1	2829
G8140-SR3	409562	5.8	2737
SR2	409562	5.8	2810
SR1	409562	5.8	2942
G81T32-SR3	517536	4.5	2907
SR2	517536	4.5	2980
SR1	517536	4.5	3112
G81T36-SR3	658760	3.6	3270
SR2	658760	3.6	3343
SR1	658760	3.6	3475
G10128-SR4	278170	13.8	3384
SR3	278170	13.8	3547
SR2	278170	13.8	3724
G10132-SR4	320367	13.8	3406
SR3	320367	13.8	3570
SR2	320367	13.8	3747
SR1	320367	13.8	3955
G10136-SR4	417723	10.9	3633
SR3	417723	10.9	3796
SR2	417723	10.9	3973
SR1	417723	10.9	4182
G10140-SR4	519126	8.8	3756
SR3	519126	8.8	3919
SR2	519126	8.8	4096
SR1	519126	8.8	4304
G101T32-SR4	640734	6.9	3964
SR3	640734	6.9	4128
SR2	640734	6.9	4304
SR1	640734	6.9	4513
G101T36-SR4	835445	5.5	4363
SR3	835445	5.5	4527
SR2	835445	5.5	4704
SR1	835445	5.5	4912
Actuator Model	Volume Per Stroke (cu cm) ▲	Maximum Operating Pressure (MOP)* (Bar)	Approximate Weight of Actuator (kg)

Actuator Model	Volume Per Stroke (cu cm) ▲	Maximum Operating Pressure (MOP)* (Bar)	Approximate Weight of Actuator (kg)
G101T40-SR4	1038252	4.4	4572
SR3	1038252	4.4	4735
SR2	1038252	4.4	4912
SR1	1038252	4.4	5121
G13140-SR4	725029	13.8	6647
SR3	725029	13.8	6980
SR2	725029	13.8	7531
SR1	725029	13.8	7864
G13144-SR4	884213	11.4	6834
SR3	884213	11.4	7168
SR2	884213	11.4	7719
SR1	884213	11.4	8052
G13148-SR4	1058555	9.7	7062
SR3	1058555	9.7	7395
SR2	1058555	9.7	7946
SR1	1058555	9.7	8279
G13152-SR4	1248055	8.3	7293
SR3	1248055	8.3	7626
SR2	1248055	8.3	8177
SR1	1248055	8.3	8510
G131T40-SR4	1488650	6.9	7599
SR3	1488650	6.9	7932
SR2	1488650	6.9	8483
SR1	1488650	6.9	8816
G131T44-SR4	1816850	5.7	7989
SR3	1816850	5.7	8322
SR2	1816850	5.7	8873
SR1	1816850	5.7	9206
G131T48-SR4	2176432	4.8	8386
SR3	2176432	4.8	8719
SR2	2176432	4.8	9270
SR1	2176432	4.8	9604
G131T52-SR4	2567394	4.1	8726
SR3	2567394	4.1	9059
SR2	2567394	4.1	9610
SR1	2567394	4.1	9943
Actuator Model	Volume Per Stroke (cu cm) ▲	Maximum Operating Pressure (MOP)* (Bar)	Approximate Weight of Actuator (kg)

▲ Maximum volume including cavity required for calculating consumption per stroke.

* **Maximum Operating Pressure (MOP)** – The maximum recommended pressure at which the actuator should be operated.

Maximum Relief Valve Set Pressure (MRP) – The maximum recommended relief pressure valve set point.

MRP is calculated by multiplying MOP times 1.15 for G-Series actuators.

Maximum System Pressure (MSP) – The maximum allowable system supply pressure to which an actuator may be exposed.

MSP is calculated by multiplying MOP times 1.25 for G-Series actuators.

• For dual cylinder models this volume equals the volume of one inboard plus one outboard.

BETTIS[™]

www.Bettis.com

Copyright © Emerson Process Management. The information in this document is subject to change without notice.

Updated data sheets can be obtained from our website www.bettis.com or from your nearest Valve Automation Center.

USA: +1 281 727 5300 Europe: +31 74 256 1010 Asia-Pacific: +65 6501 4600



EMERSON[™]
Process Management

Data sheet

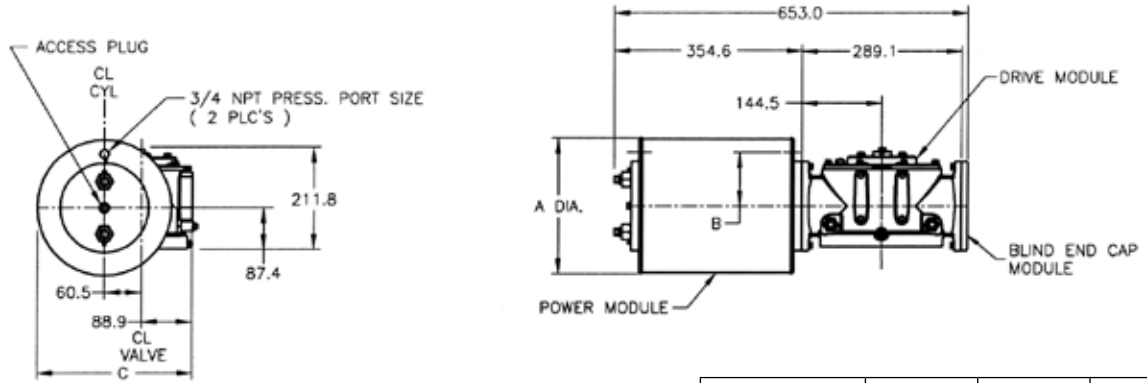
Sheet No.: GPM 3.01 RevB

Date: August 2010

G-Series

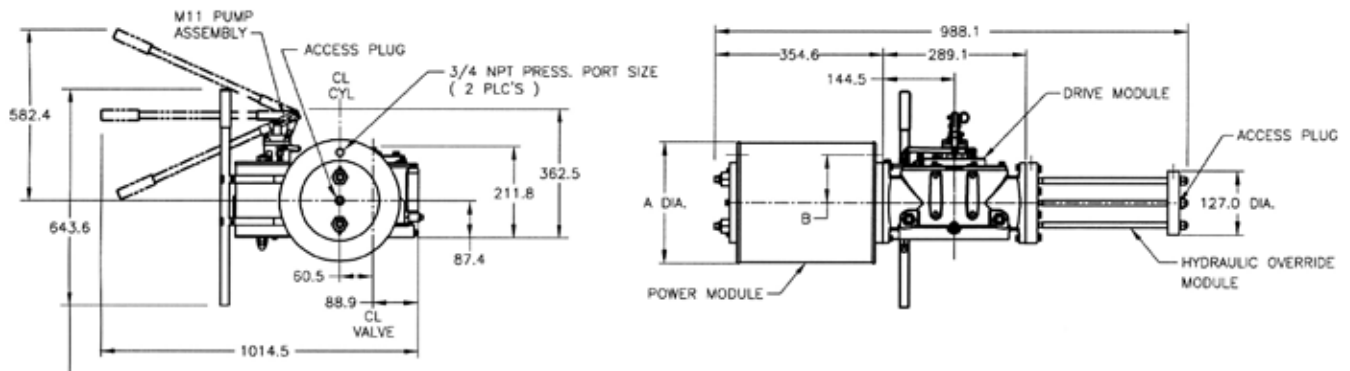
Dimensions – (Pneumatic) mm.

Double-Acting Actuators G011XX (CW Model Shown)



Actuator Model	A	B	C
G01108	222.3	81.0	260.4
G01109	251.0	96.0	274.8
G01110	279.4	111.3	289.1
G01112	330.2	127.0	314.5
G01114	362.0	139.7	330.2

G010XX-M11 (CW Model Shown)



Actuator Model	A	B
G01108-M11	222.3	81.0
G01109-M11	251.0	96.0
G01110-M11	279.4	111.3
G01112-M11	330.2	127.0
G01114-M11	362.0	139.7

Note: Not Certified dimensional drawings. Such drawings available on request.
Contact factory with correct model designation and serial number.
All dimensions are expressed in millimeters.

BETTIS[™]

www.Bettis.com

Copyright © Emerson Process Management. The information in this document is subject to change without notice.
Updated data sheets can be obtained from our website www.bettis.com or from your nearest Valve Automation Center.
USA: +1 281 727 5300 Europe: +31 74 256 1010 Asia-Pacific: +65 6501 4600


EMERSON[™]
Process Management

Data sheet

Sheet No.: GPM 3.02 RevB

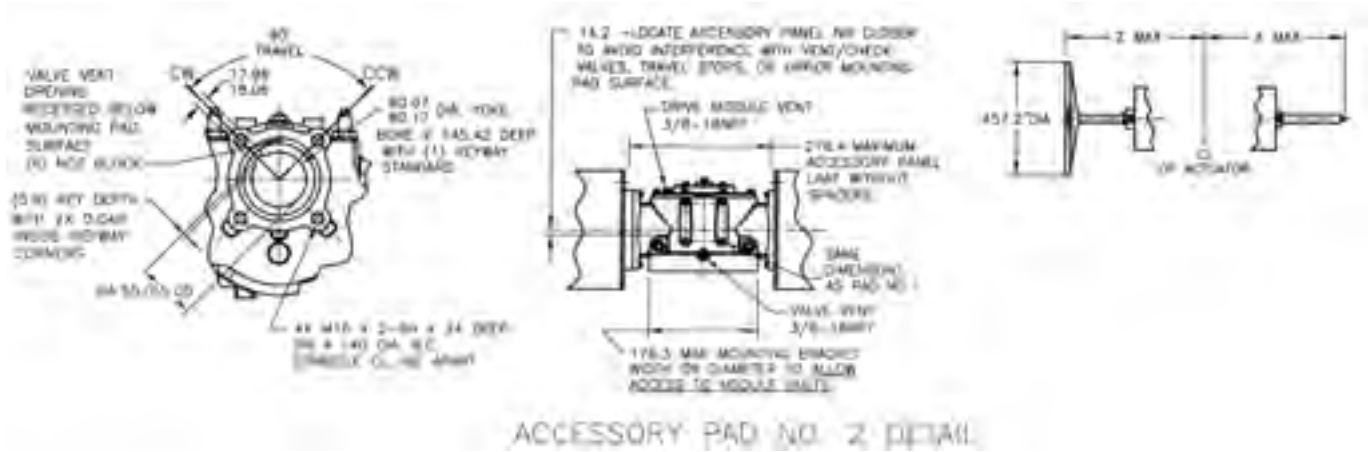
Date: August 2010

G-Series

Dimensions – (Pneumatic) mm.

Double-Acting Actuators Mounting Pad Detail

Adjustable End Stops & Jackscrews



	Power Module	Blind End Cap Module	Spring Module
X (-ETS) Extended Travel Stop	693.9	402.1	1210.3
X (-33) End Stop	518.4	226.6	1023.9
Z (M3/M3HW) Jackscrew	750.3	442.7	1184.4

Note: Not Certified dimensional drawings. Such drawings available on request.
Contact factory with correct model designation and serial number.
All dimensions are expressed in millimeters.

BETTIS[™]

www.Bettis.com

Copyright © Emerson Process Management. The information in this document is subject to change without notice.
Updated data sheets can be obtained from our website www.bettis.com or from your nearest Valve Automation Center.
USA: +1 281 727 5300 Europe: +31 74 256 1010 Asia-Pacific: +65 6501 4600


EMERSON[™]
Process Management

Data sheet

Sheet No.: GPM 3.03 RevC

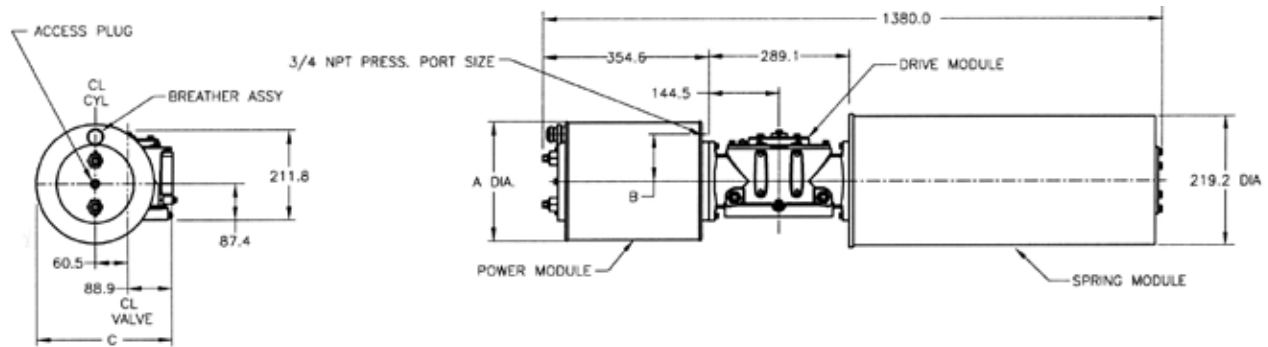
Date: November 2011

G-Series

Dimensions – (Pneumatic) mm.

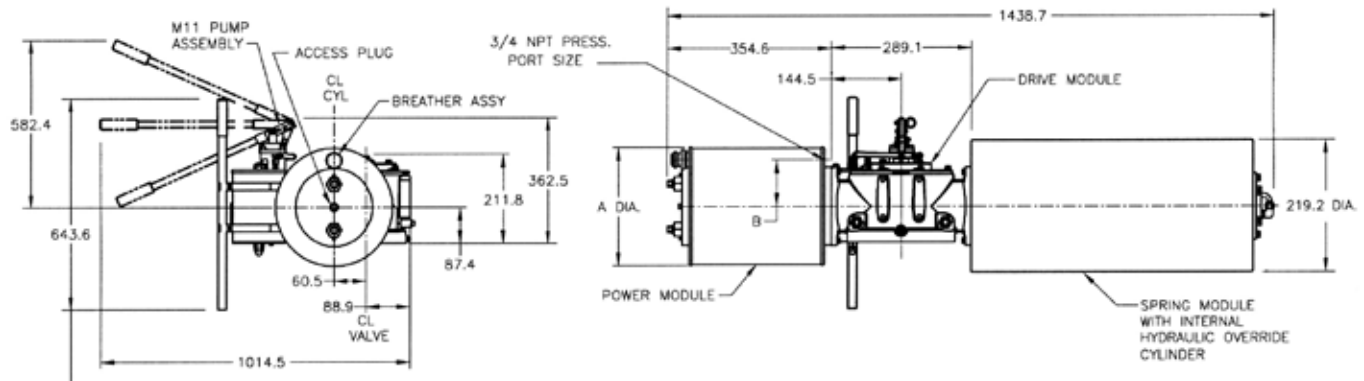
Spring-Return Actuators

G011XX-SR (CW Model Shown)



Actuator Model	A	B	C
G01108-SR	222.3	81.0	260.4
G01109-SR	251.0	96.0	274.8
G01110-SR	279.4	111.3	289.1
G01112-SR	330.2	127.0	314.5
G01114-SR	362.0	139.7	330.2

G011XX-SR-M11 (CW Model Shown)



Actuator Model	A	B
G01108-SR-M11	222.3	81.0
G01109-SR-M11	251.0	96.0
G01110-SR-M11	279.4	111.3
G01112-SR-M11	330.2	127.0
G01114-SR-M11	362.0	139.7

Note: Not Certified dimensional drawings. Such drawings available on request.
 Contact factory with correct model designation and serial number.
 All dimensions are expressed in millimeters.

BETTIS

www.Bettis.com

Copyright © Emerson Process Management. The information in this document is subject to change without notice.
 Updated data sheets can be obtained from our website www.bettis.com or from your nearest Valve Automation Center.
 USA: +1 281 727 5300 Europe: +31 74 256 1010 Asia-Pacific: +65 6501 4600


EMERSON
 Process Management

Data sheet

Sheet No.: GPM 3.04 RevC

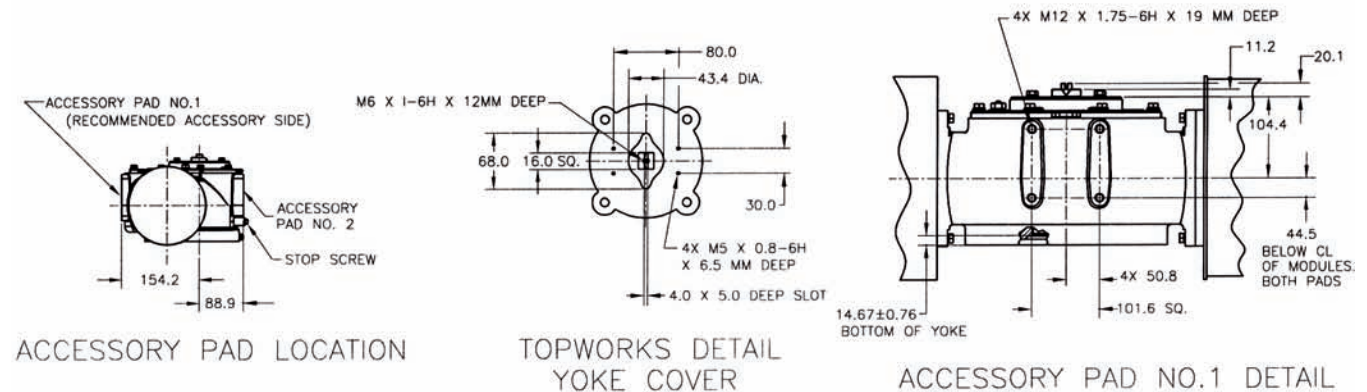
Date: November 2011

G-Series

Dimensions – (Pneumatic) mm.

Spring-Return Actuators

Accessory Details



Note: Not Certified dimensional drawings. Such drawings available on request.
Contact factory with correct model designation and serial number.
All dimensions are expressed in millimeters.

BETTIS™

www.Bettis.com

Copyright © Emerson Process Management. The information in this document is subject to change without notice.
Updated data sheets can be obtained from our website www.bettis.com or from your nearest Valve Automation Center.
USA: +1 281 727 5300 Europe: +31 74 256 1010 Asia-Pacific: +65 6501 4600



EMERSON™
Process Management

Data sheet

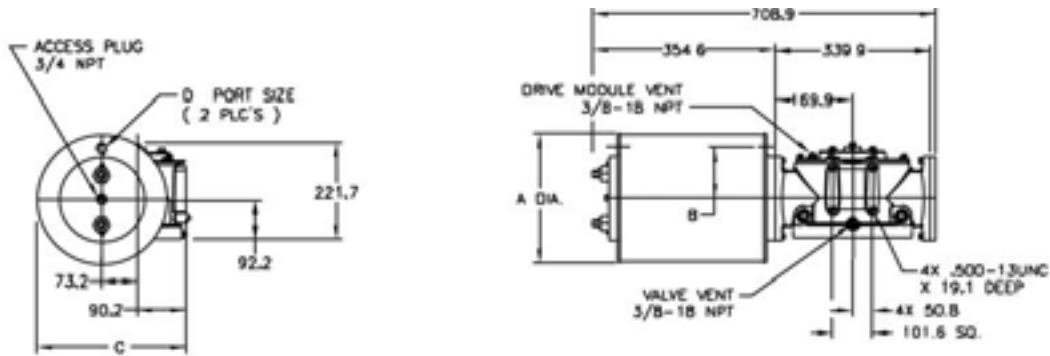
Sheet No.: GPM 3.05 RevB

Date: August 2010

G-Series

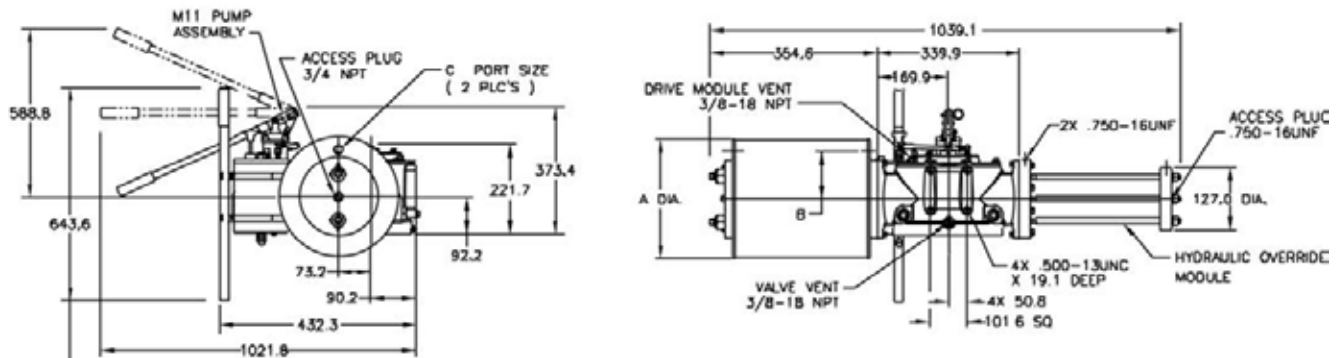
Dimensions – (Pneumatic) mm.

Double-Acting Actuators G21XX (CW Model Shown)



Actuator Model	A	B	C	D
G2109	251.0	85.9	289.1	3/4 NPT
G2110	279.4	111.3	303.0	3/4 NPT
G2112	330.2	127.0	328.4	3/4 NPT
G2114	362.0	139.7	344.4	3/4 NPT
G2116	412.8	158.8	369.8	3/4 NPT

G21XX-M11 (CW Model Shown)



NOTE: PUMP HANDLE SHOWN STORED, MAY BE MOVED UP OR DOWN.

Actuator Model	A	B	C
G2109-M11	251.0	85.9	3/4 NPT
G2110-M11	254.0	111.3	3/4 NPT
G2112-M11	330.2	127.0	3/4 NPT
G2114-M11	362.0	139.7	3/4 NPT
G2116-M11	412.8	158.8	3/4 NPT

Note: Not Certified dimensional drawings. Such drawings available on request.
Contact factory with correct model designation and serial number.
All dimensions are expressed in millimeters.

BETTIS[™]

www.Bettis.com

Copyright © Emerson Process Management. The information in this document is subject to change without notice.
Updated data sheets can be obtained from our website www.bettis.com or from your nearest Valve Automation Center.
USA: +1 281 727 5300 Europe: +31 74 256 1010 Asia-Pacific: +65 6501 4600


EMERSON[™]
Process Management

Data sheet

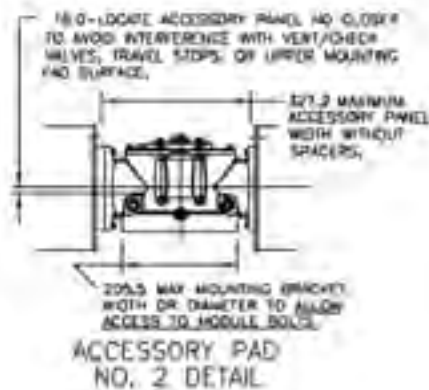
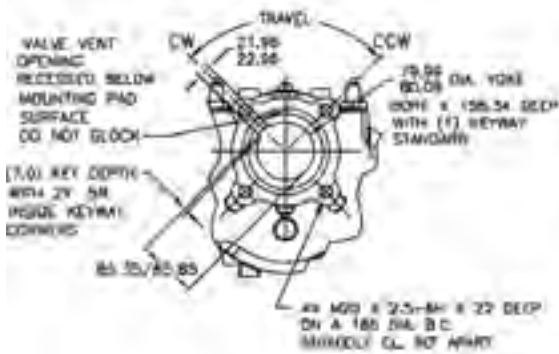
Sheet No.: GPM 3.06 RevB

Date: August 2010

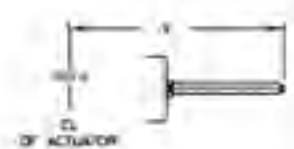
G-Series

Dimensions – (Pneumatic) mm.

Double-Acting Actuators Valve/Accessory Mounting Details



Adjustable End Stops



	X (-ETS) Extended Travel Stop	X End Stop	Z (M3/M3HW) Jackscrew
Power Module	719.3	543.8	890.8
Blind End Cap Module	427.5	252.0	572.8
Spring Module	1224.8	1049.3	1278.9

Note: Not Certified dimensional drawings. Such drawings available on request.
Contact factory with correct model designation and serial number.
All dimensions are expressed in millimeters.

BETTIS™

www.Bettis.com

Copyright © Emerson Process Management. The information in this document is subject to change without notice.
Updated data sheets can be obtained from our website www.bettis.com or from your nearest Valve Automation Center.
USA: +1 281 727 5300 Europe: +31 74 256 1010 Asia-Pacific: +65 6501 4600

EMERSON™
Process Management

Data sheet

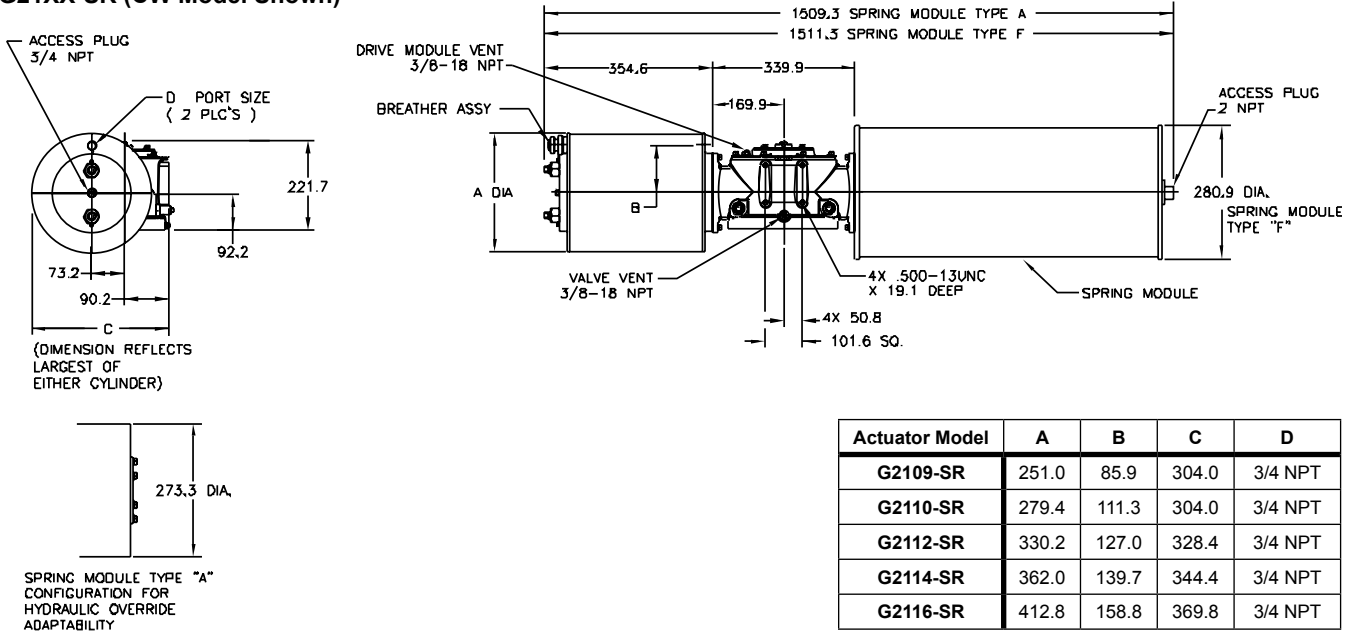
Sheet No.: GPM 3.07 RevB

Date: August 2010

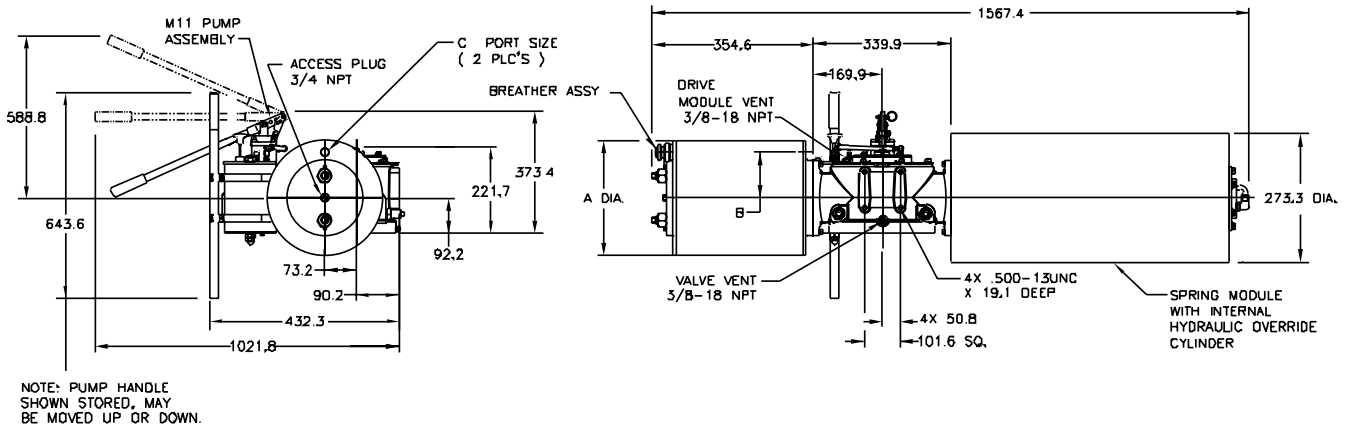
G-Series

Dimensions – (Pneumatic) mm.

Spring-Return Actuators G21XX-SR (CW Model Shown)



G21XX-SR-M11 (CW Model Shown)



Note: Not Certified dimensional drawings. Such drawings available on request.
Contact factory with correct model designation and serial number.
All dimensions are expressed in millimeters.

BETTIS[™]

www.Bettis.com

Copyright © Emerson Process Management. The information in this document is subject to change without notice.
Updated data sheets can be obtained from our website www.bettis.com or from your nearest Valve Automation Center.
USA: +1 281 727 5300 Europe: +31 74 256 1010 Asia-Pacific: +65 6501 4600

EMERSON[™]
Process Management

Data sheet

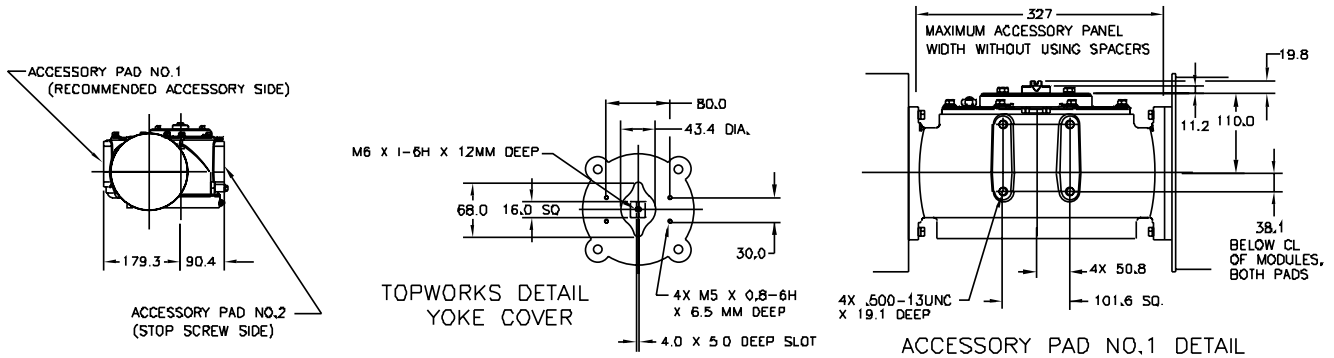
Sheet No.: GPM 3.08 RevB

Date: August 2010

G-Series

Dimensions – (Pneumatic) mm.

Spring-Return Actuators Accessory Details



Note: Not Certified dimensional drawings. Such drawings available on request.
Contact factory with correct model designation and serial number.
All dimensions are expressed in millimeters.

BETTIS[™]

www.Bettis.com

Copyright © Emerson Process Management. The information in this document is subject to change without notice.
Updated data sheets can be obtained from our website www.bettis.com or from your nearest Valve Automation Center.
USA: +1 281 727 5300 Europe: +31 74 256 1010 Asia-Pacific: +65 6501 4600


EMERSON[™]
Process Management

Data sheet

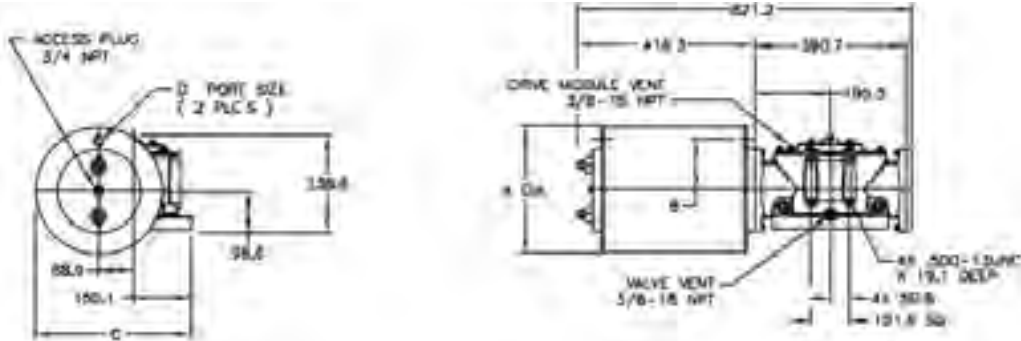
Sheet No.: GPM 3.09 RevB

Date: August 2010

G-Series

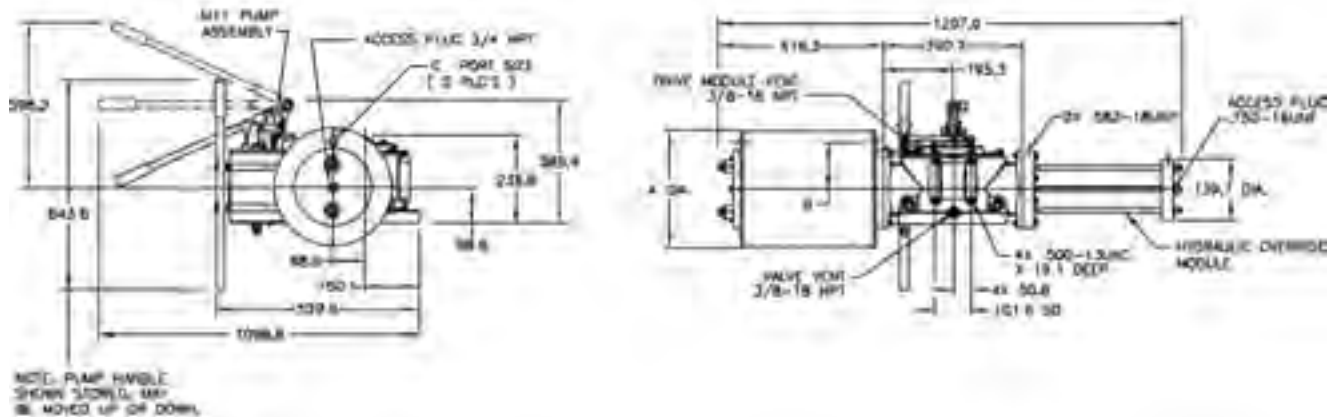
Dimensions – (Pneumatic) mm.

Double-Acting Actuators G31XX (CW Model Shown)



Actuator Model	A	B	C	D
G3110	279.4	111.3	378.7	3/4 NPT
G3112	330.2	131.8	404.1	3/4 NPT
G3114	362.0	144.3	419.9	3/4 NPT
G3116	412.8	158.8	445.3	3/4 NPT
G3120	514.4	203.2	496.1	3/4 NPT

G31XX-M11 (CW Model Shown)



Actuator Model	A	B	C
G3110-M11	279.4	111.3	3/4 NPT
G3112-M11	330.2	131.8	3/4 NPT
G3114-M11	362.0	144.3	3/4 NPT
G3116-M11	412.8	158.8	3/4 NPT
G3120-M11	514.4	203.2	3/4 NPT

Note: Not Certified dimensional drawings. Such drawings available on request.
Contact factory with correct model designation and serial number.
All dimensions are expressed in millimeters.

BETTIS[™]

www.Bettis.com

Copyright © Emerson Process Management. The information in this document is subject to change without notice.
Updated data sheets can be obtained from our website www.bettis.com or from your nearest Valve Automation Center.
USA: +1 281 727 5300 Europe: +31 74 256 1010 Asia-Pacific: +65 6501 4600


EMERSON[™]
Process Management

Data sheet

Sheet No.: GPM 3.10 RevB

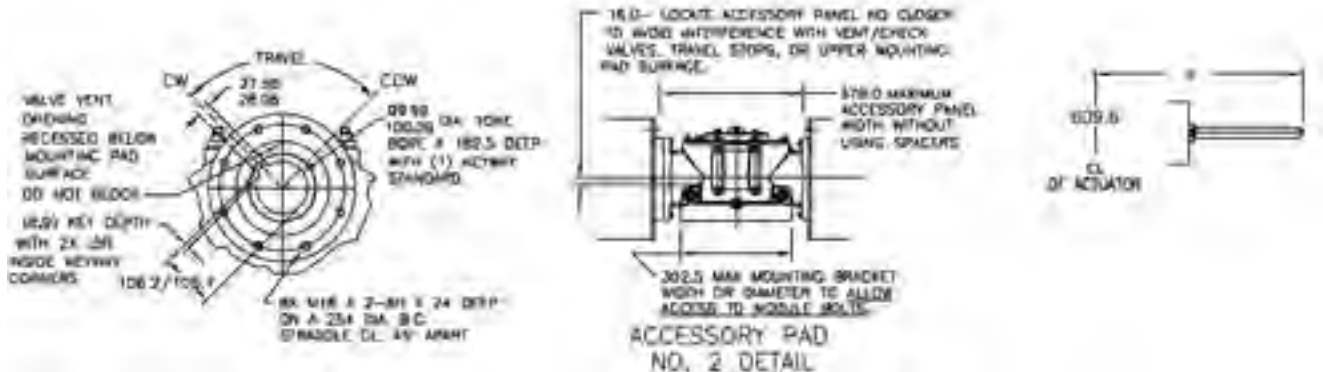
Date: August 2010

G-Series

Dimensions – (Pneumatic) mm.

Double-Acting Actuators
Valve/Accessory Mounting Details

Adjustable End Stops



	X (-ETS) Extended Travel Stop	X End Stop	Z (M3/M3HW) Jackscrew
Power Module	840.5	623.1	938.3
Blind End Cap Module	497.1	281.9	580.6
Spring Module	1353.8	1136.4	1397.0

Note: Not Certified dimensional drawings. Such drawings available on request.
Contact factory with correct model designation and serial number.
All dimensions are expressed in millimeters.

BETTIS[™]

www.Bettis.com

Copyright © Emerson Process Management. The information in this document is subject to change without notice.
Updated data sheets can be obtained from our website www.bettis.com or from your nearest Valve Automation Center.
USA: +1 281 727 5300 Europe: +31 74 256 1010 Asia-Pacific: +65 6501 4600


EMERSON[™]
Process Management

Data sheet

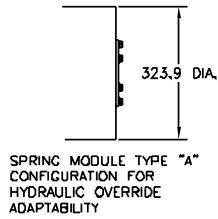
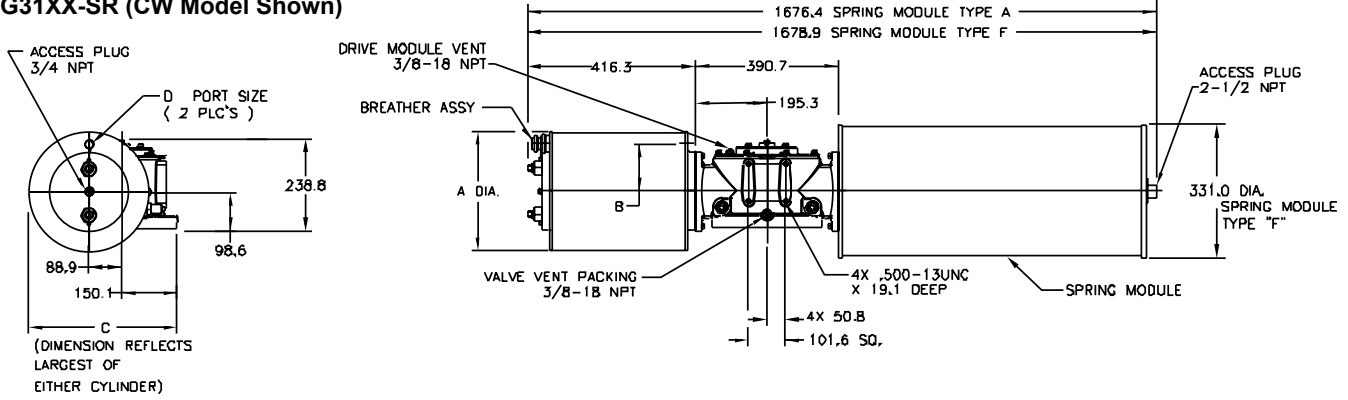
Sheet No.: GPM 3.11 RevB

Date: August 2010

G-Series

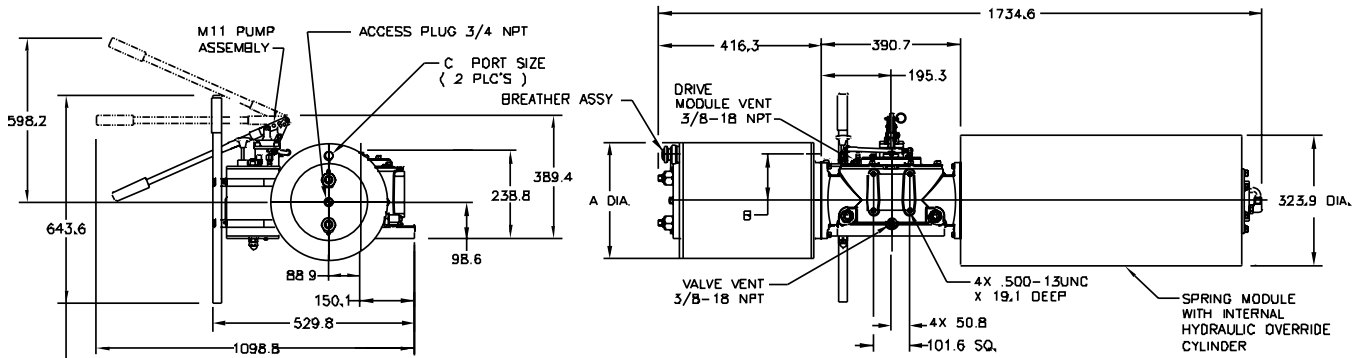
Dimensions – (Pneumatic) mm.

Spring-Return Actuators G31XX-SR (CW Model Shown)



Actuator Model	A	B	C	D
G3110-SR	279.4	111.3	399.5	3/4 NPT
G3112-SR	330.2	131.8	404.1	3/4 NPT
G3114-SR	362.0	144.3	419.9	3/4 NPT
G3116-SR	412.8	158.8	445.3	3/4 NPT
G3120-SR	514.4	203.2	496.1	3/4 NPT

G31XX-SR-M11 (CW Model Shown)



NOTE: PUMP HANDLE
SHOWN STORED, MAY
BE MOVED UP OR DOWN.

Actuator Model	A	B	C
G3110-SR-M11	279.4	111.3	3/4 NPT
G3112-SR-M11	330.2	131.8	3/4 NPT
G3114-SR-M11	362.0	144.3	3/4 NPT
G3116-SR-M11	412.8	158.8	3/4 NPT
G3120-SR-M11	514.4	203.2	3/4 NPT

Note: Not Certified dimensional drawings. Such drawings available on request.
Contact factory with correct model designation and serial number.
All dimensions are expressed in millimeters.

BETTIS

www.Bettis.com

Copyright © Emerson Process Management. The information in this document is subject to change without notice.
Updated data sheets can be obtained from our website www.bettis.com or from your nearest Valve Automation Center.
USA: +1 281 727 5300 Europe: +31 74 256 1010 Asia-Pacific: +65 6501 4600

EMERSON
Process Management

Data sheet

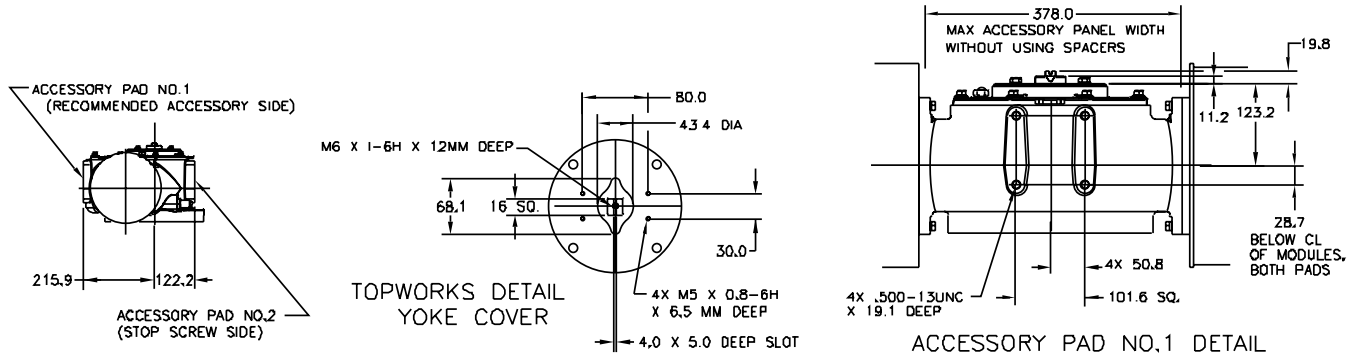
Sheet No.: GPM 3.12 RevB

Date: August 2010

G-Series

Dimensions – (Pneumatic) mm.

Spring-Return Actuators Accessory Details



Note: Not Certified dimensional drawings. Such drawings available on request.
Contact factory with correct model designation and serial number.
All dimensions are expressed in millimeters.

BETTIS[™]

www.Bettis.com

Copyright © Emerson Process Management. The information in this document is subject to change without notice.
Updated data sheets can be obtained from our website www.bettis.com or from your nearest Valve Automation Center.
USA: +1 281 727 5300 Europe: +31 74 256 1010 Asia-Pacific: +65 6501 4600


EMERSON[™]
Process Management

Data sheet

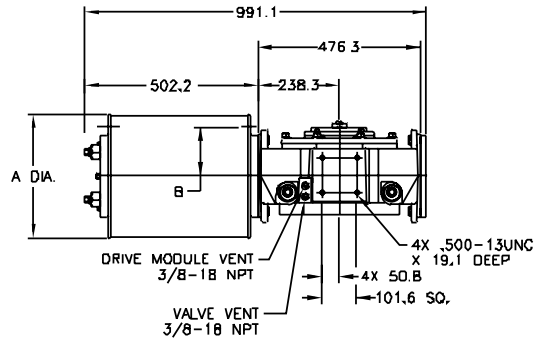
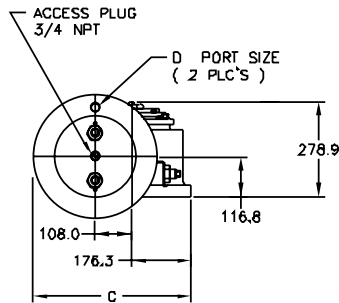
Sheet No.: GPM 3.13 RevB

Date: August 2010

G-Series

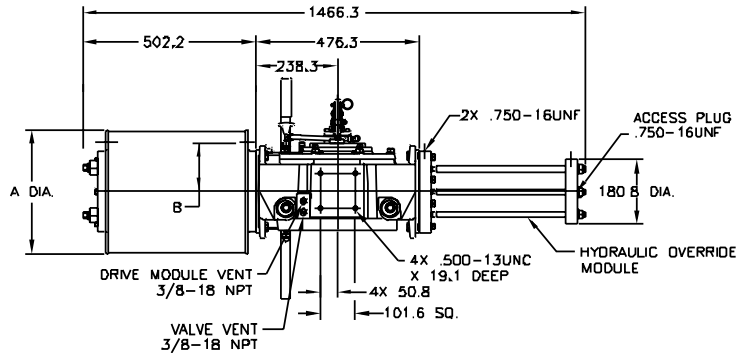
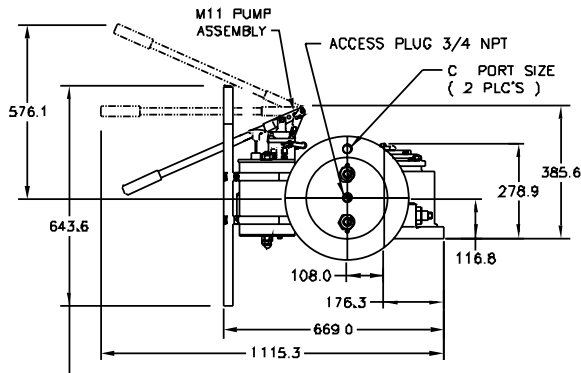
Dimensions – (Pneumatic) mm.

Double-Acting Actuators G41XX (CW Model Shown)



Actuator Model	A	B	C	D
G4112	330.2	138.2	449.3	3/4 NPT
G4114	362.0	143.0	465.3	3/4 NPT
G4116	412.8	158.8	490.7	3/4 NPT
G4120	514.4	206.5	541.5	3/4 NPT
G4124	616.0	244.6	592.3	3/4 NPT
G4128	736.6	292.1	652.5	1.0 NPT

G41XX-M11 (CW Model Shown)



NOTE: PUMP HANDLE SHOWN STORED. MAY BE MOVED UP OR DOWN.

Actuator Model	A	B	C
G4112-M11	330.2	138.2	3/4 NPT
G4114-M11	362.0	143.0	3/4 NPT
G4116-M11	412.8	158.8	3/4 NPT
G4120-M11	514.4	206.5	3/4 NPT
G4124-M11	616.0	244.6	3/4 NPT
G4128-M11	736.6	292.1	1.0 NPT

Note: Not Certified dimensional drawings. Such drawings available on request. Contact factory with correct model designation and serial number. All dimensions are expressed in millimeters.

BETTIS[™]

www.Bettis.com

Copyright © Emerson Process Management. The information in this document is subject to change without notice. Updated data sheets can be obtained from our website www.bettis.com or from your nearest Valve Automation Center. USA: +1 281 727 5300 Europe: +31 74 256 1010 Asia-Pacific: +65 6501 4600


EMERSON[™]
Process Management

Data sheet

Sheet No.: GPM 3.14 RevB

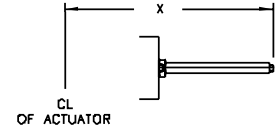
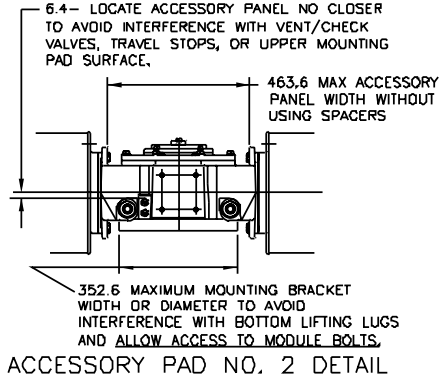
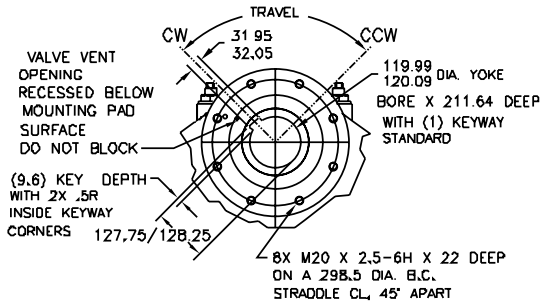
Date: August 2010

G-Series

Dimensions – (Pneumatic) mm.

**Double-Acting Actuators
Valve/Accessory Mounting Details**

Adjustable End Stops



	X Extended Travel Stop	X End Stop
Power Module	1009.4	790.4
Blind End Cap Module	592.3	373.4
Spring Module	1539.5	1263.7

Note: Not Certified dimensional drawings. Such drawings available on request.
 Contact factory with correct model designation and serial number.
 All dimensions are expressed in millimeters.



www.Bettis.com

Copyright © Emerson Process Management. The information in this document is subject to change without notice.
 Updated data sheets can be obtained from our website www.bettis.com or from your nearest Valve Automation Center.
 USA: +1 281 727 5300 Europe: +31 74 256 1010 Asia-Pacific: +65 6501 4600



Data sheet

Sheet No.: GPM 3.15 RevB

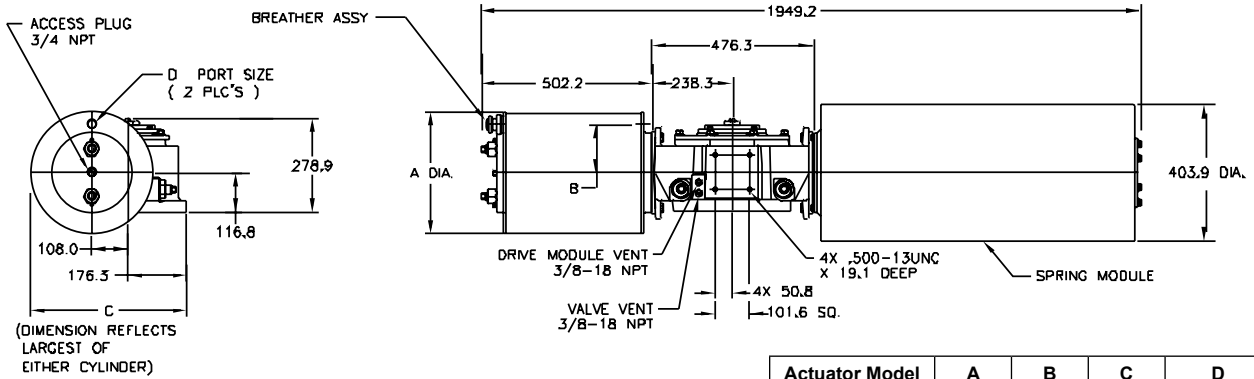
Date: August 2010

G-Series

Dimensions – (Pneumatic) mm.

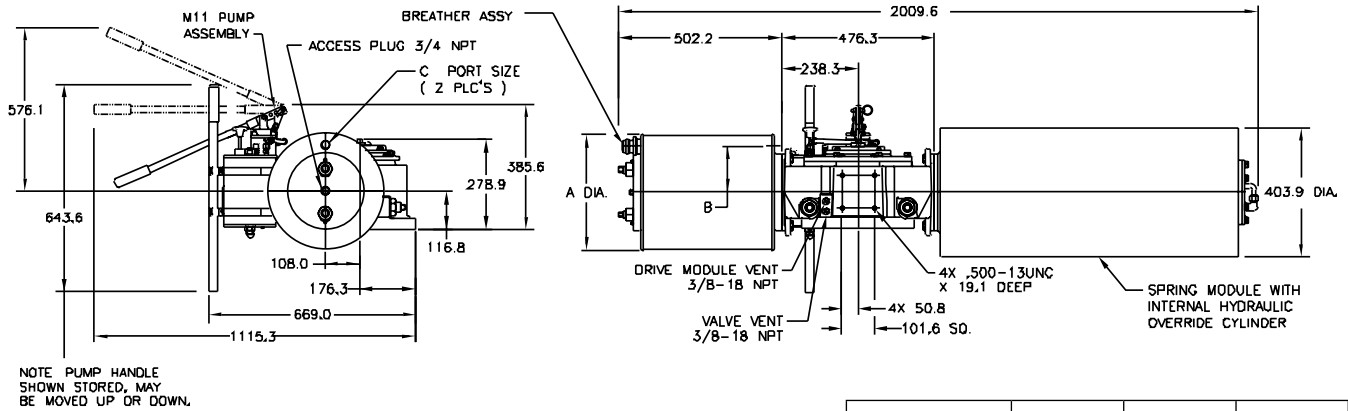
Spring-Return Actuators

G41XX-SR (CW Model Shown)



Actuator Model	A	B	C	D
G4112-SR	330.2	138.2	486.2	3/4 NPT
G4114-SR	362.0	143.0	486.2	3/4 NPT
G4116-SR	412.8	158.8	490.7	3/4 NPT
G4120-SR	514.4	206.5	541.5	3/4 NPT
G4124-SR	616.0	244.6	592.3	3/4 NPT
G4128-SR	736.6	292.1	652.5	1.0 NPT

G41XX-SR-M11 (CW Model Shown)



Actuator Model	A	B	C
G4112-SR-M11	330.2	138.2	3/4 NPT
G4114-SR-M11	362.0	143.0	3/4 NPT
G4116-SR-M11	412.8	158.8	3/4 NPT
G4120-SR-M11	514.4	206.5	3/4 NPT
G4124-SR-M11	616.0	244.6	3/4 NPT
G4128-SR-M11	736.6	292.1	1.0 NPT

Note: Not Certified dimensional drawings. Such drawings available on request.
 Contact factory with correct model designation and serial number.
 All dimensions are expressed in millimeters.



www.Bettis.com

Copyright © Emerson Process Management. The information in this document is subject to change without notice.
 Updated data sheets can be obtained from our website www.bettis.com or from your nearest Valve Automation Center.
 USA: +1 281 727 5300 Europe: +31 74 256 1010 Asia-Pacific: +65 6501 4600



Data sheet

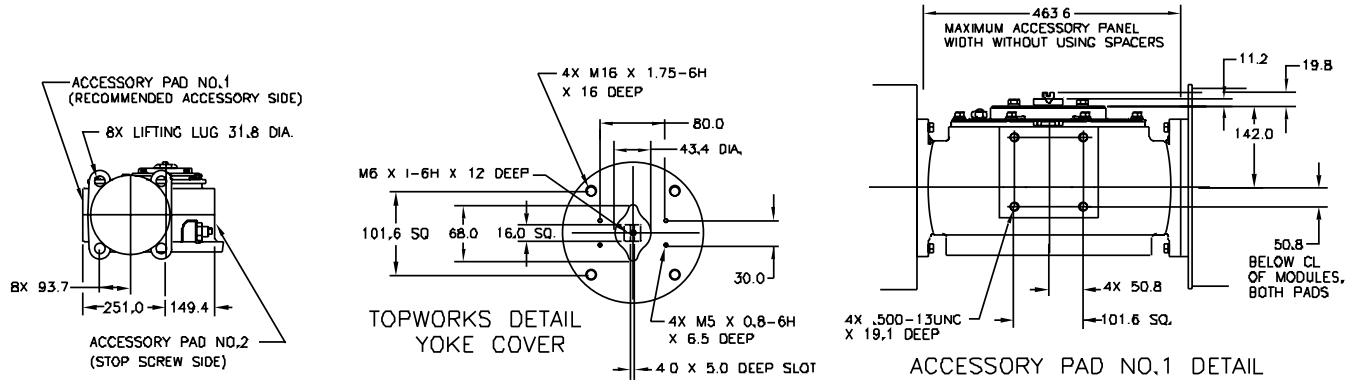
Sheet No.: GPM 3.16 RevB

Date: August 2010

G-Series

Dimensions – (Pneumatic) mm.

Spring-Return Actuators Lug/Accessory Details



Note: Not Certified dimensional drawings. Such drawings available on request.
Contact factory with correct model designation and serial number.
All dimensions are expressed in millimeters.



www.Bettis.com

Copyright © Emerson Process Management. The information in this document is subject to change without notice.
Updated data sheets can be obtained from our website www.bettis.com or from your nearest Valve Automation Center.
USA: +1 281 727 5300 Europe: +31 74 256 1010 Asia-Pacific: +65 6501 4600



Data sheet

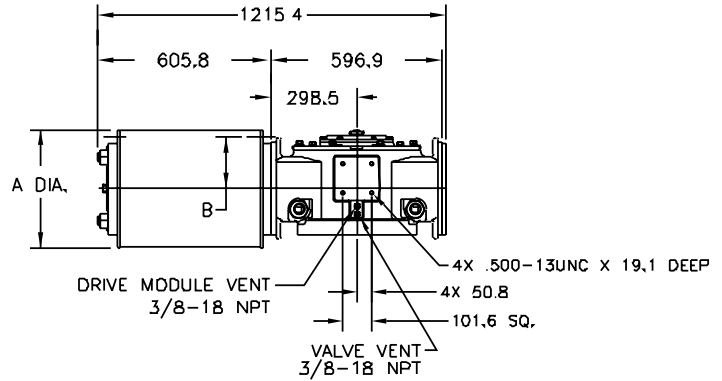
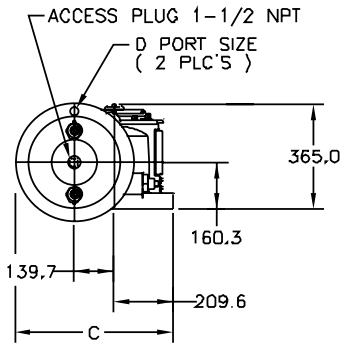
Sheet No.: GPM 3.17 RevB

Date: August 2010

G-Series

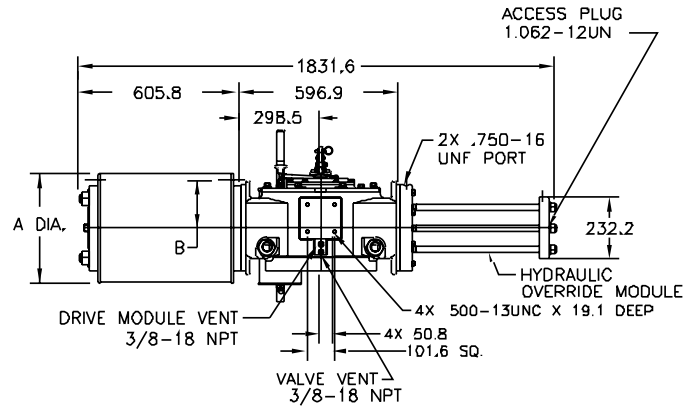
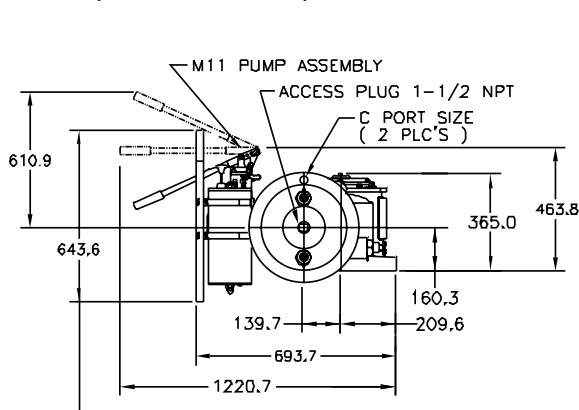
Dimensions – (Pneumatic) mm.

Double-Acting Actuators G51XX (CW Model Shown)



Actuator Model	A	B	C	D
G5116	412.8	179.3	555.8	3/4 NPT
G5120	514.4	203.2	606.6	3/4 NPT
G5124	616.0	235.0	657.4	1 NPT
G5128	736.6	306.3	717.6	1-1/2 NPT
G5132	838.2	355.6	768.4	1-1/2 NPT
G5136	946.2	406.4	822.5	1-1/2 NPT

G51XX-M11 (CW Model Shown)



NOTE: PUMP HANDLE SHOWN STORED, MAY BE MOVED UP OR DOWN.

Actuator Model	A	B	C
G5116-M11	412.8	179.3	3/4 NPT
G5120-M11	514.4	203.2	3/4 NPT
G5124-M11	616.0	235.0	1 NPT
G5128-M11	736.6	306.3	1-1/2 NPT
G5132-M11	838.2	355.6	1-1/2 NPT
G5136-M11	946.2	406.4	1-1/2 NPT

Note: Not Certified dimensional drawings. Such drawings available on request. Contact factory with correct model designation and serial number. All dimensions are expressed in millimeters.

BETTIS

www.Bettis.com

Copyright © Emerson Process Management. The information in this document is subject to change without notice. Updated data sheets can be obtained from our website www.bettis.com or from your nearest Valve Automation Center. USA: +1 281 727 5300 Europe: +31 74 256 1010 Asia-Pacific: +65 6501 4600


EMERSON
Process Management

Data sheet

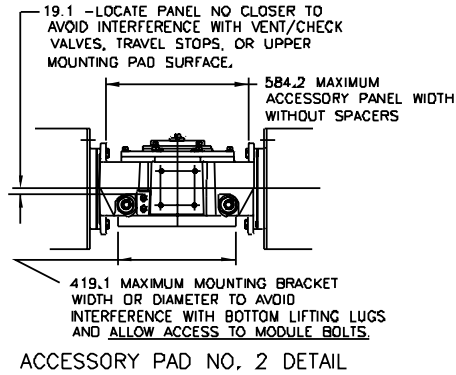
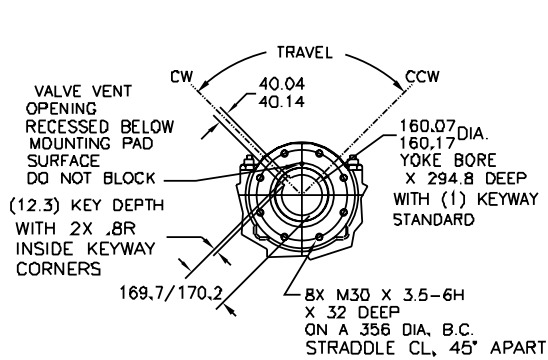
Sheet No.: GPM 3.18 RevB

Date: August 2010

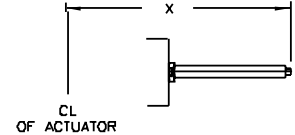
G-Series

Dimensions – (Pneumatic) mm.

Double-Acting Actuators Valve/Accessory Mounting Details



Adjustable End Stops



	X Extended Travel Stop	X End Stop
Power Module	1271.8	979.9
Blind End Cap Module	717.6	441.5
Spring Module	1790.7	1333.5

Note: Not Certified dimensional drawings. Such drawings available on request.
 Contact factory with correct model designation and serial number.
 All dimensions are expressed in millimeters.

BETTIS™

www.Bettis.com

Copyright © Emerson Process Management. The information in this document is subject to change without notice.
 Updated data sheets can be obtained from our website www.bettis.com or from your nearest Valve Automation Center.
 USA: +1 281 727 5300 Europe: +31 74 256 1010 Asia-Pacific: +65 6501 4600



EMERSON™
Process Management

Data sheet

Sheet No.: GPM 3.19 RevB

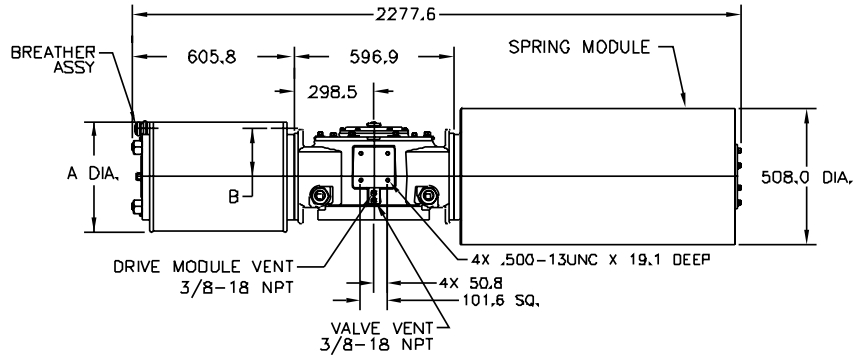
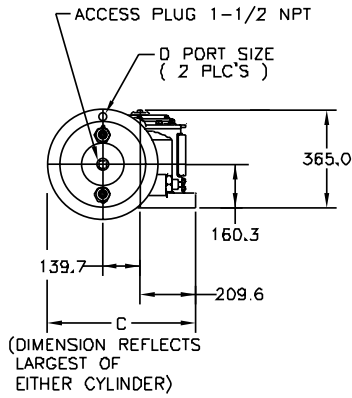
Date: August 2010

G-Series

Dimensions – (Pneumatic) mm.

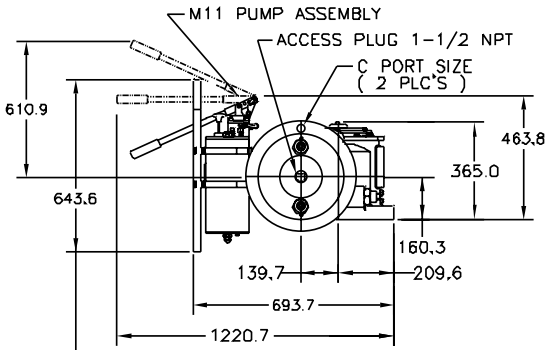
Spring-Return Actuators

G51XX-SR (CW Model Shown)

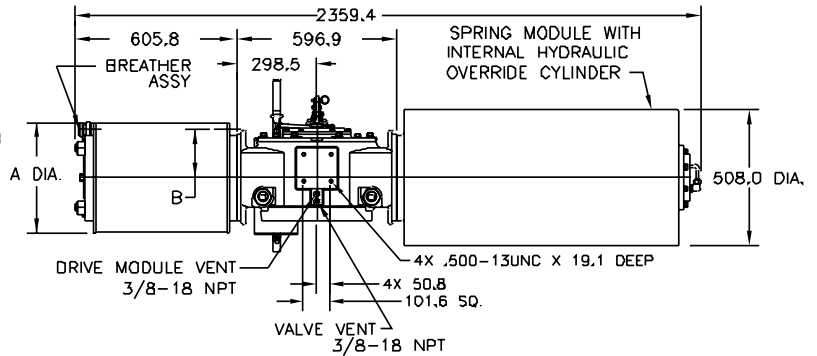


Actuator Model	A	B	C	D
G5116-SR	412.8	179.3	603.3	3/4 NPT
G5120-SR	514.4	203.2	606.6	3/4 NPT
G5124-SR	616.0	235.0	657.4	1 NPT
G5128-SR	736.6	306.3	717.6	1-1/2 NPT
G5132-SR	838.2	355.6	768.4	1-1/2 NPT
G5136-SR	946.2	406.4	822.5	1-1/2 NPT

G51XX-SR-M11 (CW Model Shown)



NOTE: PUMP HANDLE SHOWN STORED, MAY BE MOVED UP OR DOWN



Actuator Model	A	B	C
G5116-SR-M11	412.8	179.3	3/4 NPT
G5120-SR-M11	514.4	203.2	3/4 NPT
G5124-SR-M11	616.0	235.0	1 NPT
G5128-SR-M11	736.6	306.3	1-1/2 NPT
G5132-SR-M11	838.2	355.6	1-1/2 NPT
G5136-SR-M11	946.2	406.4	1-1/2 NPT

Note: Not Certified dimensional drawings. Such drawings available on request.
 Contact factory with correct model designation and serial number.
 All dimensions are expressed in millimeters.

BETTISTM

www.Bettis.com

Copyright © Emerson Process Management. The information in this document is subject to change without notice.
 Updated data sheets can be obtained from our website www.bettis.com or from your nearest Valve Automation Center.
 USA: +1 281 727 5300 Europe: +31 74 256 1010 Asia-Pacific: +65 6501 4600


EMERSONTM
 Process Management

Data sheet

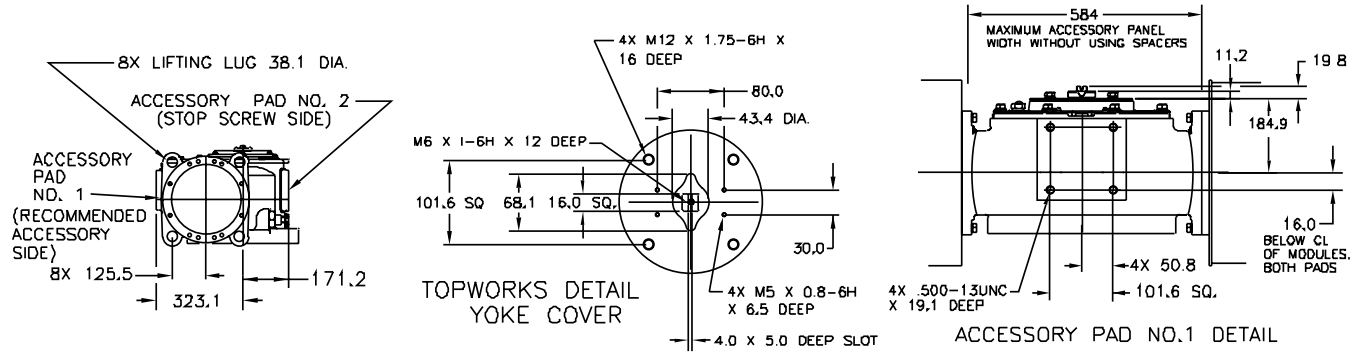
Sheet No.: GPM 3.20 RevB

Date: August 2010

G-Series

Dimensions – (Pneumatic) mm.

Spring-Return Actuators Lug/Accessory Details



Note: Not Certified dimensional drawings. Such drawings available on request.
Contact factory with correct model designation and serial number.
All dimensions are expressed in millimeters.

BETTIS[™]

www.Bettis.com

Copyright © Emerson Process Management. The information in this document is subject to change without notice.
Updated data sheets can be obtained from our website www.bettis.com or from your nearest Valve Automation Center.
USA: +1 281 727 5300 Europe: +31 74 256 1010 Asia-Pacific: +65 6501 4600


EMERSON[™]
Process Management

Data sheet

Sheet No.: GPM 3.21 RevB

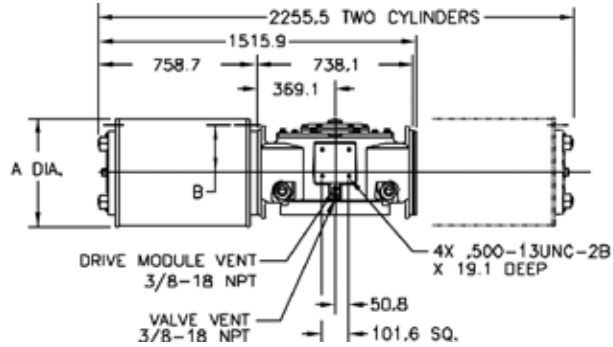
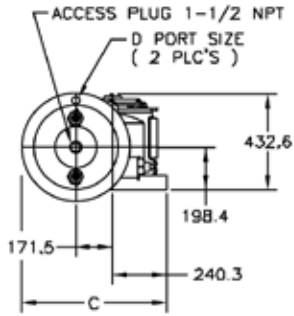
Date: August 2010

G-Series

Dimensions – (Pneumatic) mm.

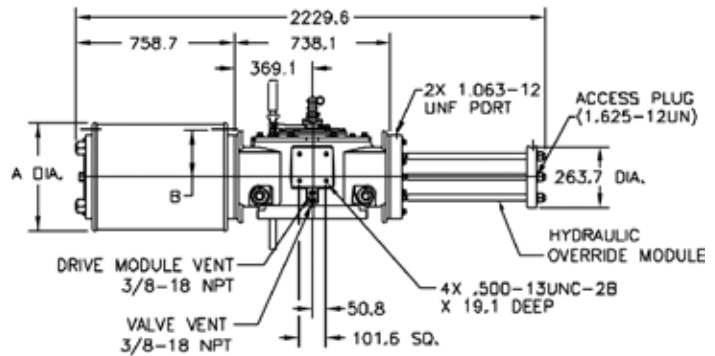
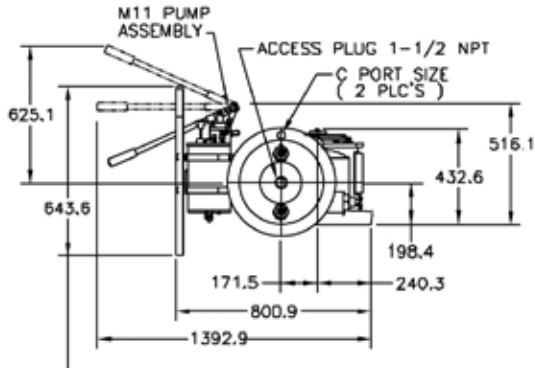
Double-Acting Actuators

G71XX or G712XX (CW Model Shown)



Actuator Model	A	B	C	D
G7120	514.4	222.3	669.0	3/4 NPT
G7124	616.0	244.6	719.8	1-1/2 NPT
G7128	736.6	285.8	780.0	1-1/2 NPT
G7132	838.2	355.6	830.8	1-1/2 NPT
G7136	946.2	406.4	884.9	1-1/2 NPT
G71228	736.6	285.8	780.0	1-1/2 NPT

G71XX-M11 (CW Model Shown)



NOTE: PUMP HANDLE SHOWN STORED, MAY BE MOVED UP OR DOWN.

Actuator Model	A	B	C
G7120-M11	514.4	222.3	3/4 NPT
G7124-M11	616.0	244.6	1-1/2 NPT
G7128-M11	736.6	285.8	1-1/2 NPT
G7132-M11	838.2	355.6	1-1/2 NPT
G7136-M11	946.2	406.4	1-1/2 NPT

Note: Not Certified dimensional drawings. Such drawings available on request.
 Contact factory with correct model designation and serial number.
 All dimensions are expressed in millimeters.



www.Bettis.com

Copyright © Emerson Process Management. The information in this document is subject to change without notice.
 Updated data sheets can be obtained from our website www.bettis.com or from your nearest Valve Automation Center.
 USA: +1 281 727 5300 Europe: +31 74 256 1010 Asia-Pacific: +65 6501 4600



Data sheet

Sheet No.: GPM 3.22 RevB

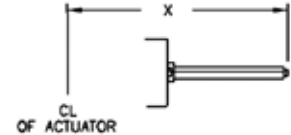
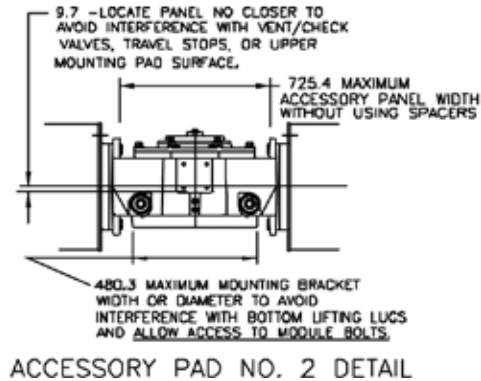
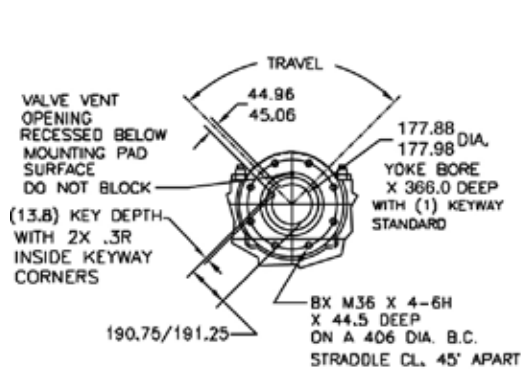
Date: August 2010

G-Series

Dimensions – (Pneumatic) mm.

**Double-Acting Actuators
Valve/Accessory Mounting Details**

Adjustable End Stops



	X Extended Travel Stop	X End Stop
Power Module	1548.6	1186.7
Blind End Cap Module	902.5	540.5
Spring Module	2313.9	1382.8

Note: Not Certified dimensional drawings. Such drawings available on request.
Contact factory with correct model designation and serial number.
All dimensions are expressed in millimeters.



www.Bettis.com

Copyright © Emerson Process Management. The information in this document is subject to change without notice.
Updated data sheets can be obtained from our website www.bettis.com or from your nearest Valve Automation Center.
USA: +1 281 727 5300 Europe: +31 74 256 1010 Asia-Pacific: +65 6501 4600



Data sheet

Sheet No.: GPM 3.23 RevB

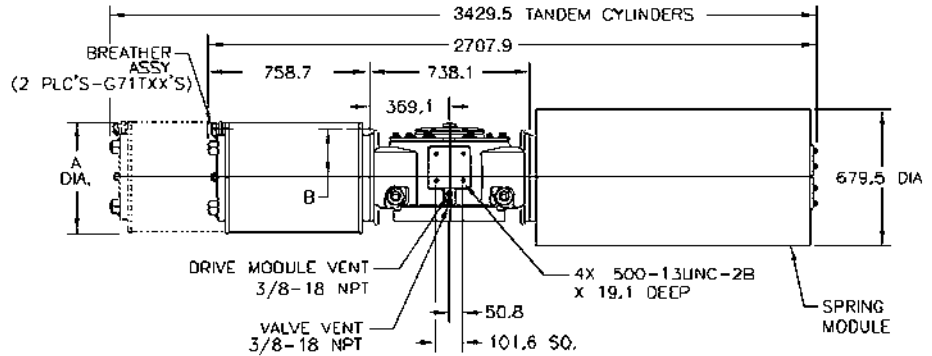
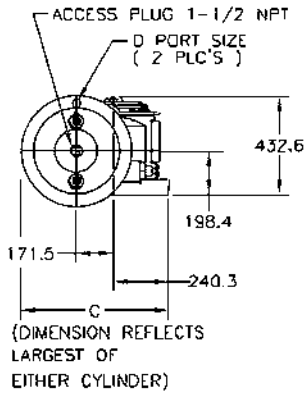
Date: August 2010

G-Series

Dimensions – (Pneumatic) mm.

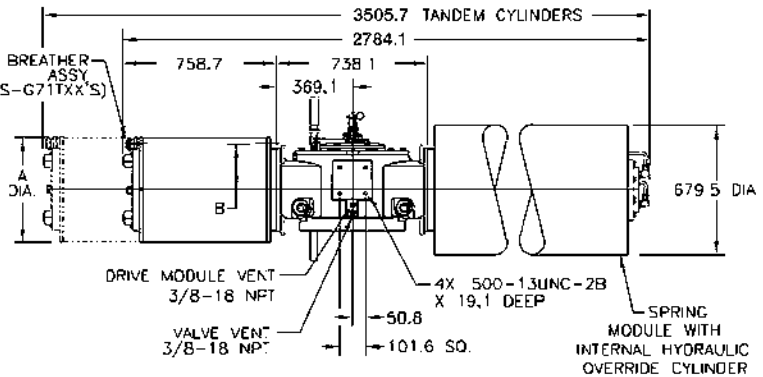
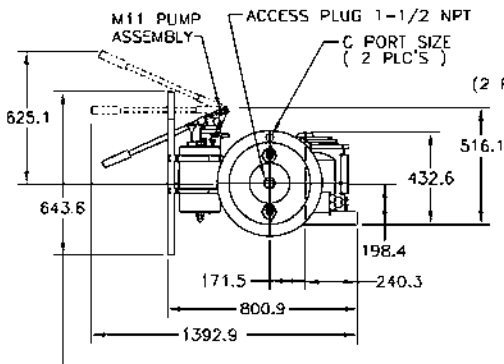
Spring-Return Actuators

G71XX-SR or G71TXX-SR (CW Model Shown)



Actuator Model	A	B	C	D
G7120-SR	514.4	222.3	751.6	3/4 NPT
G7124-SR	616.0	244.6	751.6	1-1/2 NPT
G7128-SR	736.6	285.8	780.0	1-1/2 NPT
G7132-SR	838.2	355.6	830.8	1-1/2 NPT
G7136-SR	946.2	406.4	884.9	1-1/2 NPT
G71T28-SR	736.6	285.8	780.0	1-1/2 NPT

G71XX-SR-M11 or G71TXX-SR-M11 (CW Model Shown)



Actuator Model	A	B	C
G7120-SR-M11	514.4	222.3	3/4 NPT
G7124-SR-M11	616.0	244.6	1-1/2 NPT
G7128-SR-M11	736.6	285.8	1-1/2 NPT
G7132-SR-M11	838.2	355.6	1-1/2 NPT
G7136-SR-M11	946.2	406.4	1-1/2 NPT
G71T28-SR-M11	736.6	285.8	1-1/2 NPT

Note: Not Certified dimensional drawings. Such drawings available on request.
 Contact factory with correct model designation and serial number.
 All dimensions are expressed in millimeters.



www.Bettis.com

Copyright © Emerson Process Management. The information in this document is subject to change without notice.
 Updated data sheets can be obtained from our website www.bettis.com or from your nearest Valve Automation Center.
 USA: +1 281 727 5300 Europe: +31 74 256 1010 Asia-Pacific: +65 6501 4600



Data sheet

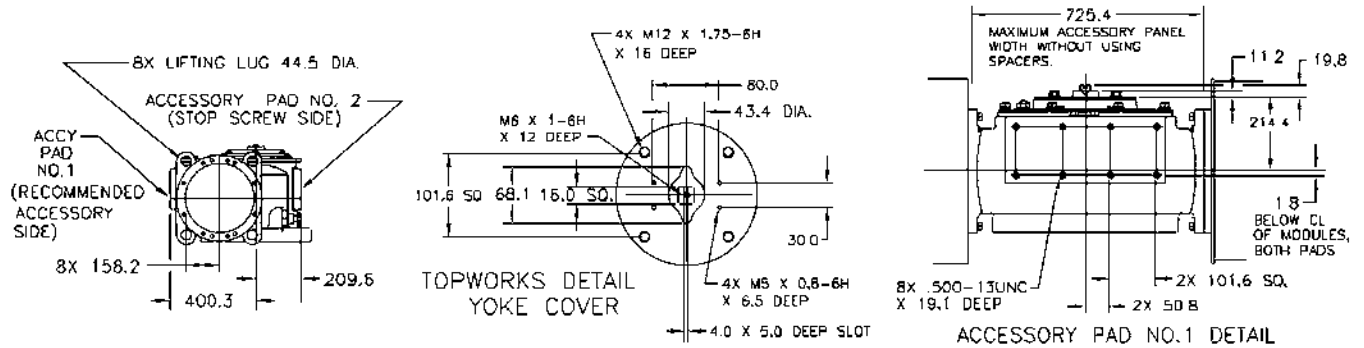
Sheet No.: GPM 3.24 RevB

Date: August 2010

G-Series

Dimensions – (Pneumatic) mm.

Spring-Return Actuators Lug/Accessory Details



Note: Not Certified dimensional drawings. Such drawings available on request.
Contact factory with correct model designation and serial number.
All dimensions are expressed in millimeters.

BETTIS[™]

www.Bettis.com

Copyright © Emerson Process Management. The information in this document is subject to change without notice.
Updated data sheets can be obtained from our website www.bettis.com or from your nearest Valve Automation Center.
USA: +1 281 727 5300 Europe: +31 74 256 1010 Asia-Pacific: +65 6501 4600


EMERSON[™]
Process Management

Data sheet

Sheet No.: GPM 3.25 RevB

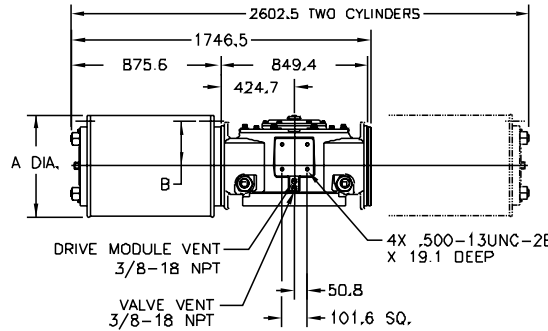
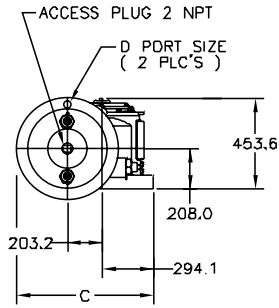
Date: August 2010

G-Series

Dimensions – (Pneumatic) mm.

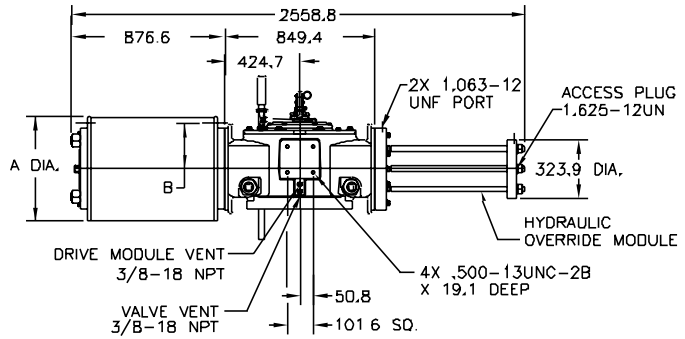
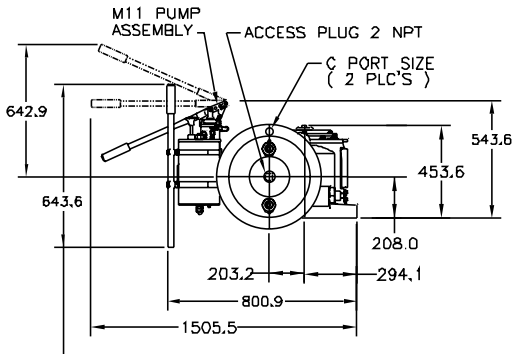
Double-Acting Actuators

G81XX or G812XX (CW Model Shown)



Actuator Model	A	B	C	D
G8124	616.0	244.6	805.4	1-1/2 NPT
G8128	736.6	314.5	865.6	1-1/2 NPT
G8132	838.2	339.9	916.4	1-1/2 NPT
G8136	946.2	406.4	970.5	1-1/2 NPT
G8140	1047.8	457.2	1021.3	2 NPT
G81232	838.2	339.9	916.4	1-1/2 NPT
G81236	946.2	406.4	970.5	1-1/2 NPT

G81XX-M11 (CW Model Shown)



NOTE PUMP HANDLE SHOWN STORED, MAY BE MOVED UP OR DOWN.

Actuator Model	A	B	C
G8124-M11	616.0	244.6	1-1/2 NPT
G8128-M11	736.6	314.5	1-1/2 NPT
G8132-M11	838.2	339.9	1-1/2 NPT
G8136-M11	946.2	406.4	1-1/2 NPT
G8140-M11	1047.8	457.2	2NPT

Note: Not Certified dimensional drawings. Such drawings available on request. Contact factory with correct model designation and serial number. All dimensions are expressed in millimeters.



www.Bettis.com

Copyright © Emerson Process Management. The information in this document is subject to change without notice. Updated data sheets can be obtained from our website www.bettis.com or from your nearest Valve Automation Center. USA: +1 281 727 5300 Europe: +31 74 256 1010 Asia-Pacific: +65 6501 4600



Data sheet

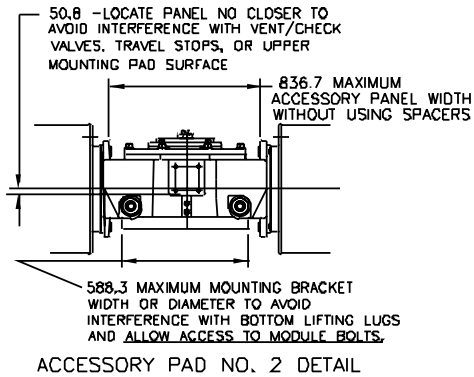
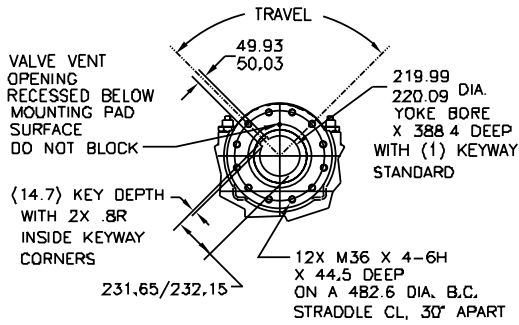
Sheet No.: GPM 3.26 RevB

Date: August 2010

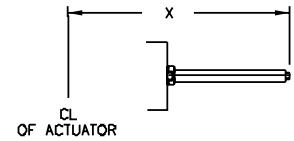
G-Series

Dimensions – (Pneumatic) mm.

Double-Acting Actuators Valve/Accessory Mounting Details



Adjustable End Stops



	X Extended Travel Stop	X End Stop
Power Module	1801.9	1381.5
Blind End Cap Module	1032.8	633.0
Spring Module	2845.8	1803.4

Note: Not Certified dimensional drawings. Such drawings available on request.
Contact factory with correct model designation and serial number.
All dimensions are expressed in millimeters.

BETTIS™

www.Bettis.com

Copyright © Emerson Process Management. The information in this document is subject to change without notice.
Updated data sheets can be obtained from our website www.bettis.com or from your nearest Valve Automation Center.
USA: +1 281 727 5300 Europe: +31 74 256 1010 Asia-Pacific: +65 6501 4600

EMERSON™
Process Management

Data sheet

Sheet No.: GPM 3.27 RevB

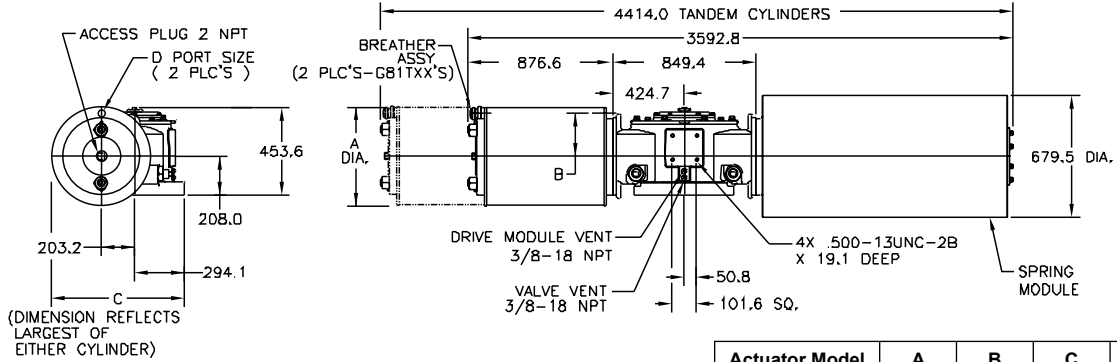
Date: August 2010

G-Series

Dimensions – (Pneumatic) mm.

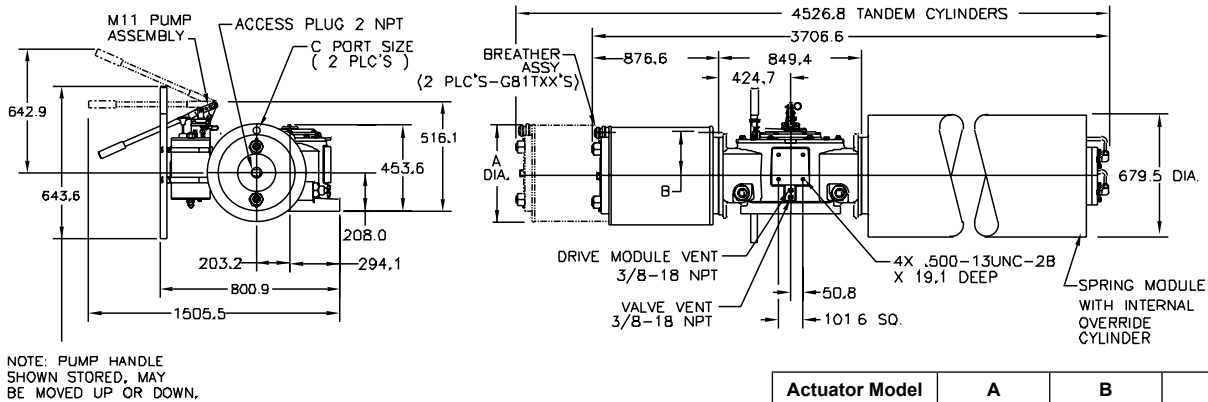
Spring-Return Actuators

G81XX-SR or G81TXX-SR (CW Model Shown)



Actuator Model	A	B	C	D
G8124-SR	616.0	244.6	837.2	1-1/2 NPT
G8128-SR	736.6	314.5	865.6	1-1/2 NPT
G8132-SR	838.2	339.9	916.4	1-1/2 NPT
G8136-SR	946.2	406.4	970.5	1-1/2 NPT
G8140-SR	1047.8	457.2	1021.3	2 NPT
G81T32-SR	838.2	339.9	916.4	1-1/2 NPT
G81T36-SR	946.2	406.4	970.5	1-1/2 NPT

G81XX-SR-M11 or G81TXX-SR-M11 (CW Model Shown)



Actuator Model	A	B	C
G8124-SR-M11	616.0	244.6	1-1/2 NPT
G8128-SR-M11	736.6	314.5	1-1/2 NPT
G8132-SR-M11	838.2	339.9	1-1/2 NPT
G8136-SR-M11	946.2	406.4	1-1/2 NPT
G8140-SR-M11	1047.8	457.2	2 NPT
G81T32-SR-M11	838.2	339.9	1-1/2 NPT
G81T36-SR-M11	946.2	406.4	1-1/2 NPT

Note: Not Certified dimensional drawings. Such drawings available on request.
 Contact factory with correct model designation and serial number.
 All dimensions are expressed in millimeters.



www.Bettis.com

Copyright © Emerson Process Management. The information in this document is subject to change without notice.
 Updated data sheets can be obtained from our website www.bettis.com or from your nearest Valve Automation Center.
 USA: +1 281 727 5300 Europe: +31 74 256 1010 Asia-Pacific: +65 6501 4600



Data sheet

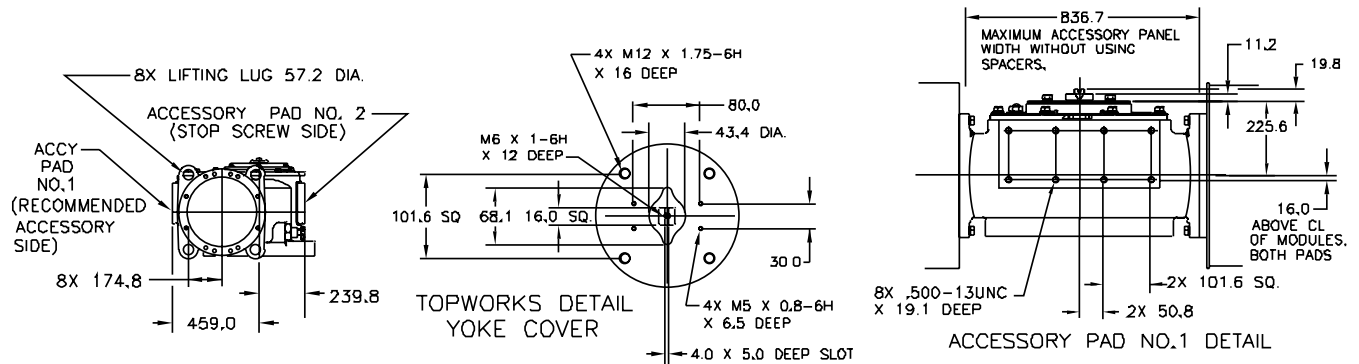
Sheet No.: GPM 3.28 RevB

Date: August 2010

G-Series

Dimensions – (Pneumatic) mm.

Spring-Return Actuators Lug/Accessory Details



Note: Not Certified dimensional drawings. Such drawings available on request.
Contact factory with correct model designation and serial number.
All dimensions are expressed in millimeters.

BETTIS[™]

www.Bettis.com

Copyright © Emerson Process Management. The information in this document is subject to change without notice.
Updated data sheets can be obtained from our website www.bettis.com or from your nearest Valve Automation Center.
USA: +1 281 727 5300 Europe: +31 74 256 1010 Asia-Pacific: +65 6501 4600


EMERSON[™]
Process Management

Data sheet

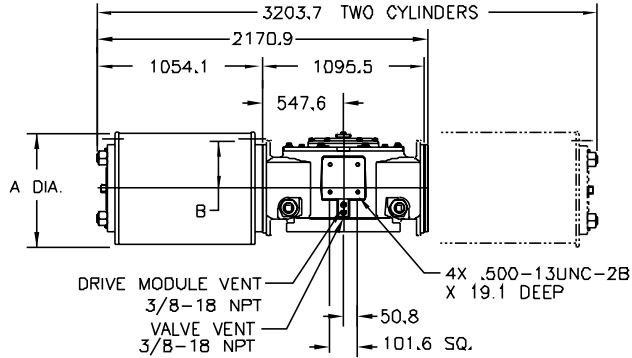
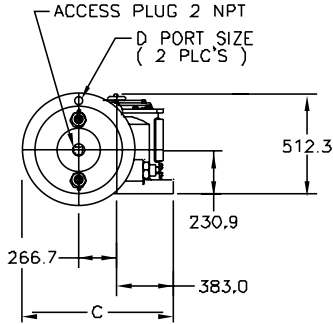
Sheet No.: GPM 3.29 RevB

Date: August 2010

G-Series

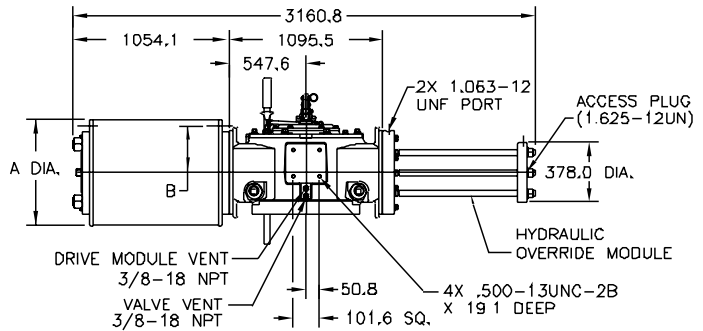
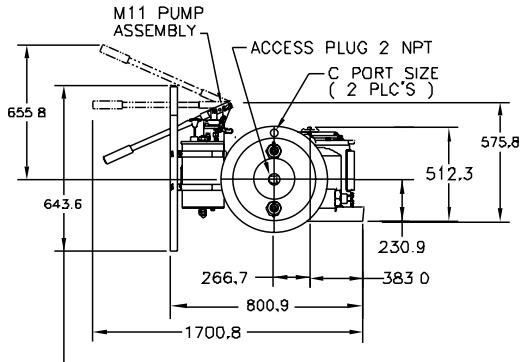
Dimensions – (Pneumatic) mm.

**Double-Acting Actuators
G101XX or G1012XX (CW Model Shown)**



Actuator Model	A	B	C	D
G10128	736.6	314.5	1018.0	1-1/2 NPT
G10132	838.2	339.9	1068.8	1-1/2 NPT
G10136	946.2	406.4	1122.9	2 NPT
G10140	1122.9	457.2	1173.7	2 NPT
G101232	838.2	339.9	1068.8	1-1/2 NPT
G101236	946.2	406.4	1122.9	2 NPT
G101240	1047.8	457.2	1173.7	2 NPT

G101XX-M11 (CW Model Shown)



NOTE: PUMP HANDLE SHOWN STORED, MAY BE MOVED UP OR DOWN.

Actuator Model	A	B	C
G10128-M11	736.6	314.5	1-1/2 NPT
G10132-M11	838.2	339.9	1-1/2 NPT
G10136-M11	946.2	406.4	2 NPT
G10140-M11	1047.8	457.2	2 NPT

Note: Not Certified dimensional drawings. Such drawings available on request. Contact factory with correct model designation and serial number. All dimensions are expressed in millimeters.



www.Bettis.com

Copyright © Emerson Process Management. The information in this document is subject to change without notice. Updated data sheets can be obtained from our website www.bettis.com or from your nearest Valve Automation Center. USA: +1 281 727 5300 Europe: +31 74 256 1010 Asia-Pacific: +65 6501 4600



Data sheet

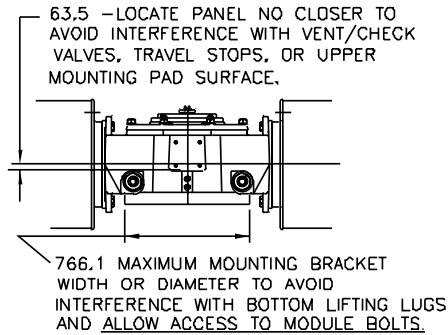
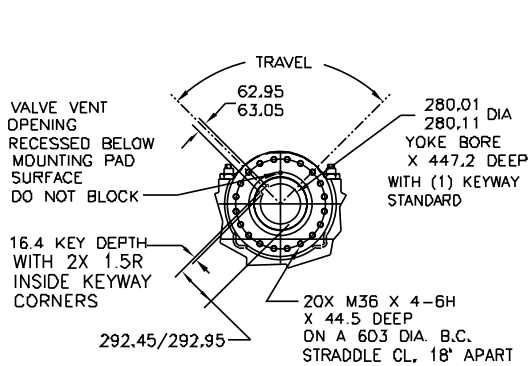
Sheet No.: GPM 3.30 RevB

Date: August 2010

G-Series

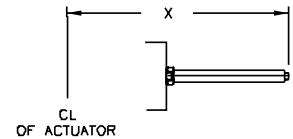
Dimensions – (Pneumatic) mm.

Double-Acting Actuators Valve/Accessory Mounting Details



ACCESSORY PAD NO. 2 DETAIL

Adjustable End Stops



	X Extended Travel Stop	X End Stop
Power Module	2262.6	1669.0
Blind End Cap Module	1325.6	757.4
Spring Module	3429.5	2051.6

Note: Not Certified dimensional drawings. Such drawings available on request.
Contact factory with correct model designation and serial number.
All dimensions are expressed in millimeters.

BETTIS™

www.Bettis.com

Copyright © Emerson Process Management. The information in this document is subject to change without notice.
Updated data sheets can be obtained from our website www.bettis.com or from your nearest Valve Automation Center.
USA: +1 281 727 5300 Europe: +31 74 256 1010 Asia-Pacific: +65 6501 4600



EMERSON™
Process Management

Data sheet

Sheet No.: GPM 3.31 RevB

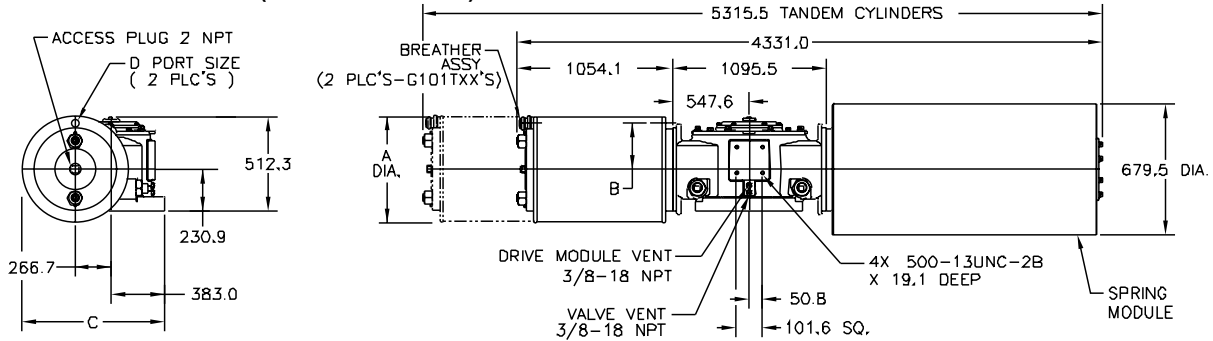
Date: August 2010

G-Series

Dimensions – (Pneumatic) mm.

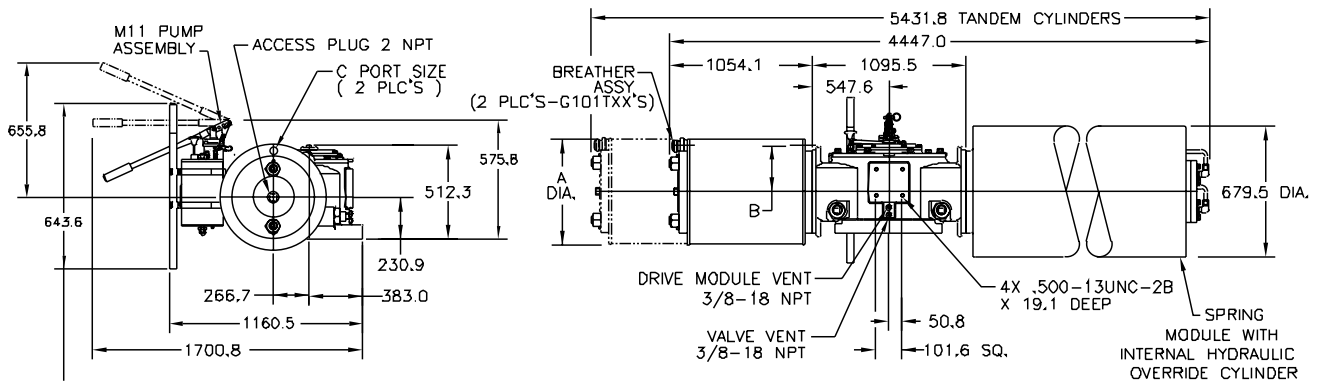
Spring-Return Actuators

G101XX-SR or G101TXX-SR (CW Model Shown)



Actuator Model	A	B	C	D
G10128-SR	736.6	314.5	1018.0	1-1/2 NPT
G10132-SR	838.2	339.9	1068.8	1-1/2 NPT
G10136-SR	946.2	406.4	1122.9	2 NPT
G10140-SR	1047.8	457.2	1173.7	2 NPT
G101T32-SR	838.2	339.9	1068.8	2 NPT
G101T36-SR	946.2	406.4	1122.9	2 NPT
G101T40-SR	1047.8	457.2	1173.7	2 NPT

G101XX-SR-M11 or G101TXX-SR-M11 (CW Model Shown)



NOTE: PUMP HANDLE SHOWN STORED, MAY BE MOVED UP OR DOWN.

Actuator Model	A	B	C
G10128-SR-M11	736.6	314.5	1-1/2 NPT
G10132-SR-M11	838.2	339.9	1-1/2 NPT
G10136-SR-M11	946.2	406.4	2 NPT
G10140-SR-M11	1047.8	457.2	2 NPT
G101T32-SR-M11	838.2	339.9	2 NPT
G101T36-SR-M11	946.2	406.4	2 NPT
G101T40-SR-M11	1047.8	457.2	2 NPT

Note: Not Certified dimensional drawings. Such drawings available on request. Contact factory with correct model designation and serial number. All dimensions are expressed in millimeters.

BETTIS

www.Bettis.com

Copyright © Emerson Process Management. The information in this document is subject to change without notice. Updated data sheets can be obtained from our website www.bettis.com or from your nearest Valve Automation Center. USA: +1 281 727 5300 Europe: +31 74 256 1010 Asia-Pacific: +65 6501 4600

EMERSON
Process Management

Data sheet

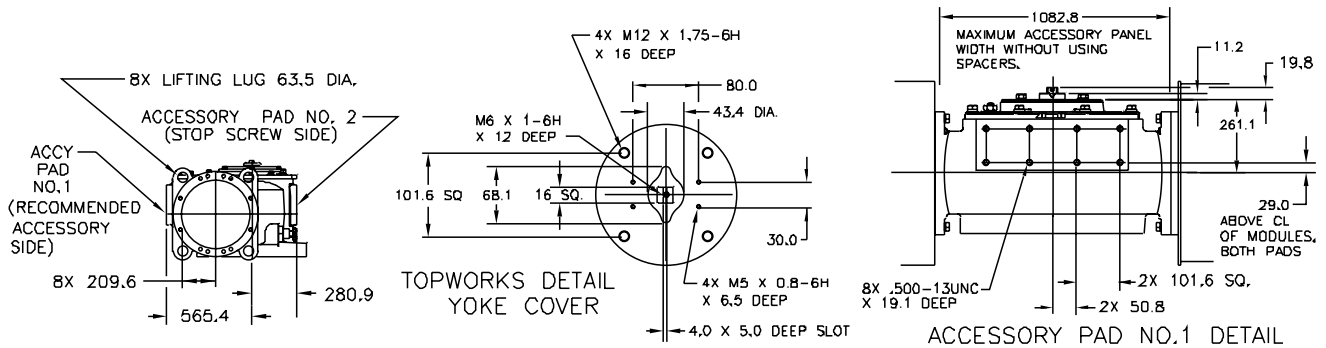
Sheet No.: GPM 3.32 RevB

Date: August 2010

G-Series

Dimensions – (Pneumatic) mm.

Spring-Return Actuators Lug/Accessory Details



Note: Not Certified dimensional drawings. Such drawings available on request.
Contact factory with correct model designation and serial number.
All dimensions are expressed in millimeters.

BETTIS[™]

www.Bettis.com

Copyright © Emerson Process Management. The information in this document is subject to change without notice.
Updated data sheets can be obtained from our website www.bettis.com or from your nearest Valve Automation Center.
USA: +1 281 727 5300 Europe: +31 74 256 1010 Asia-Pacific: +65 6501 4600


EMERSON[™]
Process Management

Contact Us: Emerson Process Management, Valve Automation facilities at your nearest location:

NORTH & SOUTH AMERICA

18703 GH Circle
PO Box 508
Waller, TX 77484
USA
T +1 281 727 5300
F +1 281 727 5353

2500 Park Avenue West
Mansfield, OH 44906
USA
T +1 419 529 4311
F +1 419 529 3688

9009 King Palm Drive
Tampa, FL 33619
USA
T +1 813 630 2255
F +1 813 630 9449

13840 Pike Road
Missouri City, Texas 77489
USA
T +1 281 499 1561
F +1 281 499 8445

Av. Hollingsworth,
325, Iporanga Sorocaba,
SP 18087-105
Brazil
T +55 15 3238 3788
F +55 15 3228 3300

MIDDLE EAST & AFRICA

P. O. Box 17033
Dubai
United Arab Emirates
T +971 4 811 8100
F +971 4 886 5465

P. O. Box 105958
Abu Dhabi
United Arab Emirates
T +971 2 697 2000
F +971 2 555 0364

P. O. Box 3911
Al Khobar 31952
Saudi Arabia
T +966 3 814 7560
F +966 3 814 7570

P. O. Box 10305
Jubail 31961
Saudi Arabia
T +966 3 340 8650
F +966 3 340 8790

P. O. Box 32281
Doha
Qatar
T +974 4 576777
F +974 4 315448

2 Monteer Road, Isando
Kempton Park, 1600
South Africa
T +27 11 974 3336
F +27 11 974 7005

EUROPE

Asveldweg 11
7556 BR Hengelo (O)
The Netherlands
T +31 74 256 1010
F +31 74 291 0938

Siemensring 112
47877 Willich
Germany
T +49 2154 499 660
F +49 2154 499 6613

25, Rue de Villeneuve
Silic – BP 40434
94583 Rungis
France
T +33 1 49 79 73 00
F +33 1 49 79 73 99

Via Montello 71/73
20038 Seregno (Milan)
Italy
T +39 0362 2285 207
F +39 0362 2436 55

6 Bracken Hill
South West Industrial Estate
Peterlee SR8 2LS
United Kingdom
T +44 191 518 0020
F +44 191 518 0032

2A Szturmowa Str
02-678 Warsaw
Poland
T +48 22 45 89 237
F +48 22 45 89 231

C/ Francisco Gervás, 1
28108 Alcobendas – Madrid
Spain
T +34 0913 586 000
F +34 0913 589 145

Letnikovskaya Str. 10-2
115114 Moscow
Russia and FSU
T +7 495 981 98 11
F +7 495 981 98 10

ASIA PACIFIC

No. 9 Gul Road
#01-02 Singapore 629361
T +65 6501 4600
F +65 6268 0028

9/F Gateway Building
No. 10 Ya Bao Road
Chaoyang District
Beijing 100020
P.R.China
T +86 10 5821 1188
F +86 10 5821 1100

No.15 Xing Wang Road
Wuqing Development Area
Tianjin 301700
P.R.China
T +86 22 8212 3300
F +86 22 8212 3308

Lot 13112, Mukim Labu
Kawasan Perindustrian Nilai
71807 Nilai, Negeri Sembilan
Malaysia
T +60 6 799 2323
F +60 6 799 9942

471 Mountain Highway
Bayswater, Victoria 3153
Australia
T +61 3 9721 0200
F +61 3 9720 0588

Delphi B Wing, 601 & 602
6th Floor, Central Avenue
Powai, Mumbai – 400 076
India
T +91 22 6662 0566
F +91 22 6662 0500

NOF, Shinagawa Konan Bldg
1-2-5, Higashi-shinagawa
Shinagawa-ku, Tokyo
140-0002 Japan
T +81 3 5769 6873
F +81 3 5769 6902

All rights reserved.

No part of this publication may be copied or published by means of printing, photocopying, microfilm or otherwise without prior written consent of Emerson Process Management. This restriction also applies to the corresponding drawings and diagrams.

Emerson Process Management has the right to change parts of the machine at any time without prior or direct notice to the client. The contents of this publication are subject to change without notice.

This publication is to be used for the standard version of the machine only. Thus Emerson Process Management cannot be held responsible for any damage resulting from the application of this publication to the version actually delivered to you.

For extra information as to adjustments, maintenance and repair, contact the technical department of your supplier.

This publication has been written with great care. However, Emerson Process Management cannot be held responsible, either for any errors occurring in this publication or for their consequences.

©2010 Emerson Electric Co.

BETTIS™

www.Bettis.com



EMERSON™
Process Management