



# Process Miner (PM)



Need a way to export your data for statistical analysis?

- Search for multi-lot data based on product code, order number, and data parameters
- Create a user configurable list of saved queries
- Compare data across different lots regardless of recipe version

## Introduction

Process Miner is a ready-only data mining tool for your Syncade system. It allows for selecting the data you want and exports it into a spreadsheet where it can be used for further analysis.

## Benefits

**Simplified Data Export.** Process Miner provides a convenient and easy way to get production data from your Syncade system into an easy to read spreadsheet. Search for orders against an particular material and then select which orders you want to compare. You can compare all parameters to the few of interest. There is even a filtering feature that allows for searching data based on varying degrees of critical processing parameters. And with Process Miner, you can query all parameters or just numeric ones so text parameters can also be returned.

**Faster Mining with Saved Queries.** Do you find yourself running common queries time and time again? If so, create your own user defined lists of commonly called data sets. You can save product specific queries as well as parameter specific queries. This tool is not only convenient for mining data for statistical analysis but can also save time on tasks such as annual reporting.

**Compare Data Independent of Recipe Version.** As a product's life cycle matures, the recipe used to make that product will often be refined or modified. With Process Miner, you are able to get the data you require regardless of recipe versions. This prevents having to run multiple queries that are recipe version specific. Process Miner will display data sets grouped by recipe version,

making it easier for you to decide what data you want to pull. And through its own algorithms, Process Miner will line up data in a logical format regardless if the recipe versions are different. In addition, if you can make product via a alternate recipe, a drop down will list the various alternates from which you can choose and pull data from as well. All product specific data will be at your fingertips.

**Thin-client Architecture.** Process Miner is a true zero-client, web-based solution that won't slow down your production system during queries. You can quickly install, validate, and deploy the solution to all your users from a centralized server and begin to immediately realize the benefits.

## Product Description

Process Miner (PM) is a data exporting tool for use with your Syncade suite electronic manufacturing records. By selecting a product code, Process Miner will return a read only list of orders, within any specified time frame with any specified status. Process Miner then goes one level deeper by allowing you to select the individual data parameters as well, saving both queries to a personalized query list linked to your user ID. And if your material recipe has changed over time, Process Miner will return all data for the orders and list them by recipe version. This will give you the ability to determine if you only want data from one recipe version or if you want data across versions. The choice is yours. Process Miner even allows alternate recipe data to be queried without having to change previous search criteria. And because Process Miner provides a read-only view of the data, you eliminate concerns with having to manually get data from your database. It also eliminates the need to create custom reports.

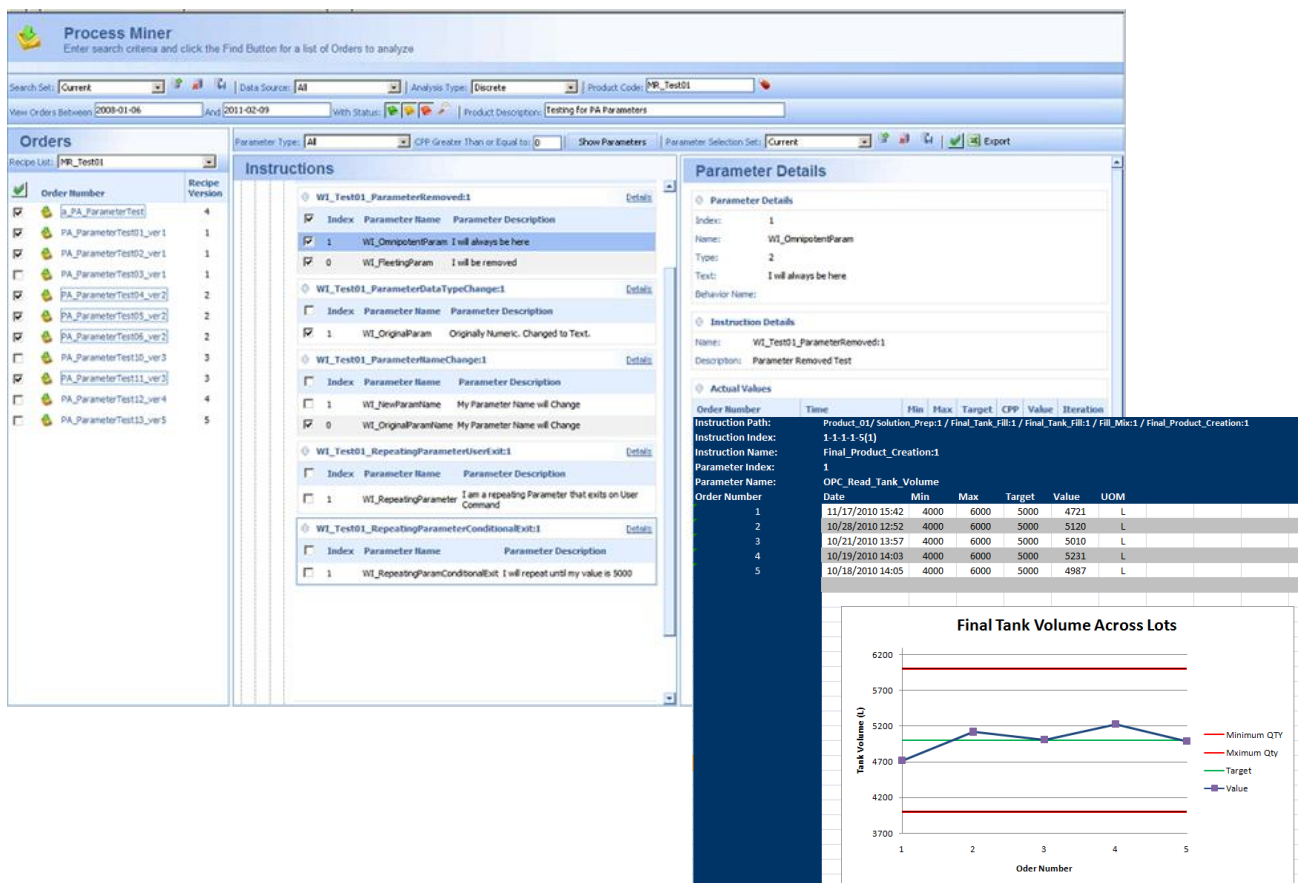
For industries under cGXP regulations, Process Miner is fully compliant with all relevant cGXP regulations, including 21CFR Part 11. User permissions verify that only those with the proper credentials have access to the data.

## Other Syncade Smart Operations Management Modules

- Document Control & Archiving (DCA)
- Batch Printing of Records (BPR)
- Training & Development (TD)
- Equipment Tracking (ET)
- Materials Management (MM)
- Weigh & Dispense (WD)
- Recipe Authoring (RA)
- Electronic Batch Record (EBR)
- Electronic Procedural Workflow (WF)
- Security & Audit (SA)
- Manufacturing Information Portal (MIP)

## General System Requirements

A server class PC with Internet Explorer is needed to support the Syncade solution. Microsoft SQL Server is the underlying database. For client access, a PC with Internet Explorer is needed. Please consult the factory for further details regarding hardware requirements and software versions.



To locate a sales office near you, visit our website at: [www.EmersonProcess.com/Syncade](http://www.EmersonProcess.com/Syncade)  
 ...or call us at: Asia Pacific: 65.777.8211  
 Europe, Middle East: 41.41.768.6111  
 North America, Latin America: +1 800.833.8314 or  
 +1 512.832.3774  
 ...or email us at: [Syncade@Emerson.com](mailto:Syncade@Emerson.com)

©Emerson Process Management 1996—2009. All rights reserved.

For Emerson Process Management trademarks and service marks, go to <http://www.emersonprocess.com/home/news/resources/marks.pdf>

The contents of this publication are presented for informational purposes only, and while every effort has been made to ensure their accuracy, they are not to be construed as warranties or guarantees, express or implied, regarding the products or services described herein or their use or applicability. All sales are governed by our terms and conditions, which are available on request. We reserve the right to modify or improve the design or specification of such products at any time without notice.