

1/2-14 NPT CONDUIT/CABLE
 THREAD (BOTH SIDES).
 M20x1.5, PG13.5
 ADAPTERS (OPTIONAL).

GROUND CONNECTION

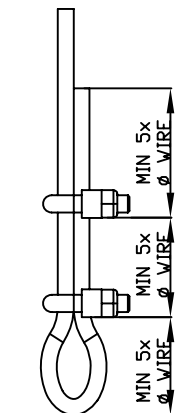
INTEGRAL DISPLAY
 (OPTIONAL)

W/O HOUSING

TANK FLANGE

WHEN MOUNTING IN NON-METALLIC VESSEL THE PROBE MUST BE MOUNTED WITH A METALLIC FLANGE >2\"/>

AVOID DISTURBING EMC-ENVIRONMENT. INSTALLATION IN METALLIC TANK IS RECOMMENDED.



WIRE ROPE CLIP/CHUCK (OPTIONAL)

BRIDLE/PIPE

NPT 1.5\", s50

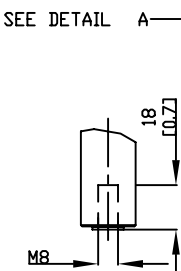
THREAD SEALING

BSP-G 1.5\", s60

UPPER REF. POINT

CENTERING DISC (OPTIONAL)
 DETAIL B
 SCALE 1:4

L>500 [19.7] TO DISTURBING OBJECTS OR TO WALL IF MATERIAL CONCRETE, PLASTIC OR RUGGED MATERIAL.
 L>100 [3.9] IF SMOOTH SURFACE METAL WALL.



SEE DETAIL A
 WEIGHT DETAIL SCALE 1:2

THE PROBE MUST BE IN THE CENTER OF THE BRIDLE/PIPE.

FOR MORE INFO. SEE REFERENCE MANUAL.

1

P/T-RATING FOR FLANGE; SEE REF. MANUAL.

04	GASKET	1	ACC. TO BSP-G THREAD STD.	CUSTOMER
03	GASKET	1	SOFT GASKET T=MIN 1.6 (ANSI B16.5/1a, EN1514-1/1BC). SPIRAL WOUND GASKET WITH NON METALLIC FILLER (ANSI B16.5/1b, EN1514-2), SEE NOTE 1.	CUSTOMER
02	SCREW/NUT/WASHER	-	ACC. TO FLANGE STD, SEE NOTE 1.	CUSTOMER
01	FLANGE	1	DIM. ACC. TO ANSI B 16.5/EN 1092-1. OTHER ON REQUEST. P/T RATING, SEE NOTE 1.	RMT
POS	ITEM DESCRIPTION	QTY	REMARK	SUPPLIER

ISSUED BY	GU-TK-MA	WEEK	0707	PRODUCT CODE	5300	FILE	PRO/E	INSTALLATION DRAWING TITLE	MECHANICAL INSTALLATION DWG FLEXIBLE SINGLE LEAD HTHP
APPROVED BY	GU-HF	WEEK	0707	ORIGINAL DWG NO.		SCALE			

ROSEMOUNT		1 ST ANGLE	DR. TYPE	DWG NO.	01	SHEET	1/1
			2	9240017-995			

THE COPYRIGHT/OWNERSHIP OF THIS DOCUMENT IS AND WILL REMAIN OURS. THE DOCUMENT MUST NOT BE USED WITHOUT OUR AUTHORIZATION OR BROUGHT TO THE KNOWLEDGE OF A THIRD PARTY. CONTRAVENTION WILL BE PROSECUTED. ROSEMOUNT TANK RADAR AB, SWEDEN.