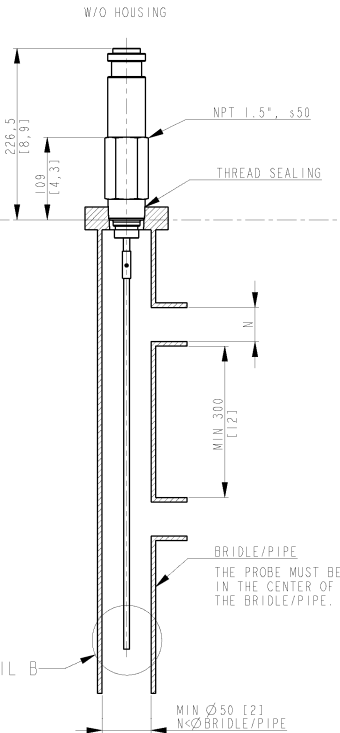
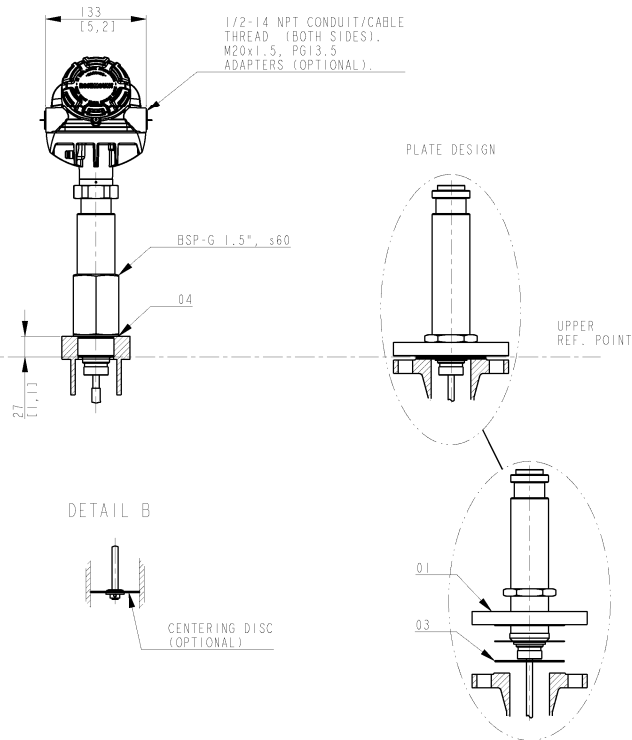


WHEN MOUNTING IN NON-METALLIC VESSEL THE PROBE MUST BE MOUNTED WITH A METALLIC FLANGE >2"/DN50 OR THE THREADED VERSION MUST BE SCREWED IN TO A METAL SHEET >Ø200 [7.8]

AVOID DISTURBING EMC-ENVIRONMENT. INSTALLATION IN METALLIC TANK IS RECOMMENDED.



SEE DETAIL B



DEPENDING ON TURBULENCE IN TANK AND MOUNTING ANGLE THE PROBE MAY NEED TO BE ANCHORED OR SUPPORTED.

ENSURE THAT PROBE HAS NO CONTACT WITH NOZZLE/TANK WALL.

FOR MORE INFO, SEE REFERENCE MANUAL.

1. P/T-RATING FOR FLANGE; SEE REF. MANUAL.

| POS | ITEM             | DESCRIPTION  | QTY | REMARK | SUPPLIER |
|-----|------------------|--|-----|--------|----------|
| 04  | GASKET           | ACC. TO BSP-G THREAD STD.  |     |        | CUSTOMER |
| 03  | GASKET           | SOFT GASKET T-MIN 1.6 (ANSI B16.5/16, EN1514-1/1BC), SPIRAL WOUND GASKET WITH NON METALLIC FILLER (ANSI B16.5/16, EN1514-2), SEE NOTE 1. |     |        | CUSTOMER |
| 02  | SCREW/NUT/WASHER | ACC. TO FLANGE STD. SEE NOTE 1.  |     |        | CUSTOMER |
| 01  | FLANGE           | DIM. ACC. TO ANSI B 16.5/EN 1092-1, OTHER ON REQUEST. P/T RATING. SEE NOTE 1.  |     |        | RMT      |

| ISSUED BY   | REV  | PRODUCT CODE      | FILE     | INSTALLATION DRAWING TITLE  |       |       |
|-------------|------|-------------------|----------|-----------------------------|-------|-------|
| EMe-HW-C    | 0909 | 5300              | PRO/E    | MECHANICAL INSTALLATION DWG |       |       |
| APPROVED BY | REV  | ORIGINAL DWS. NO. | SCALE    |                             |       |       |
| EMe-HF      | 0909 | 9240017-994       | -        | RIGID SINGLE LEAD HTHP      |       |       |
| ROSEMOUNT®  |      | T BY SINGLE       | DOC TYPE | DWG NO                      | ISSUE | SHEET |
|             |      |                   | 2        | 9240017-994                 | 02    | 1/1   |

THE COPYRIGHT/OWNERSHIP OF THIS DOCUMENT IS AND WILL REMAIN OURS. THE DOCUMENT MUST NOT BE USED WITHOUT OUR AUTHORIZATION OR BROUGHT TO THE KNOWLEDGE OF A THIRD PARTY. CONTRAVENTION WILL BE PROSECUTED. ROSEMOUNT TANK RADAR AB, SWEDEN