

4

3

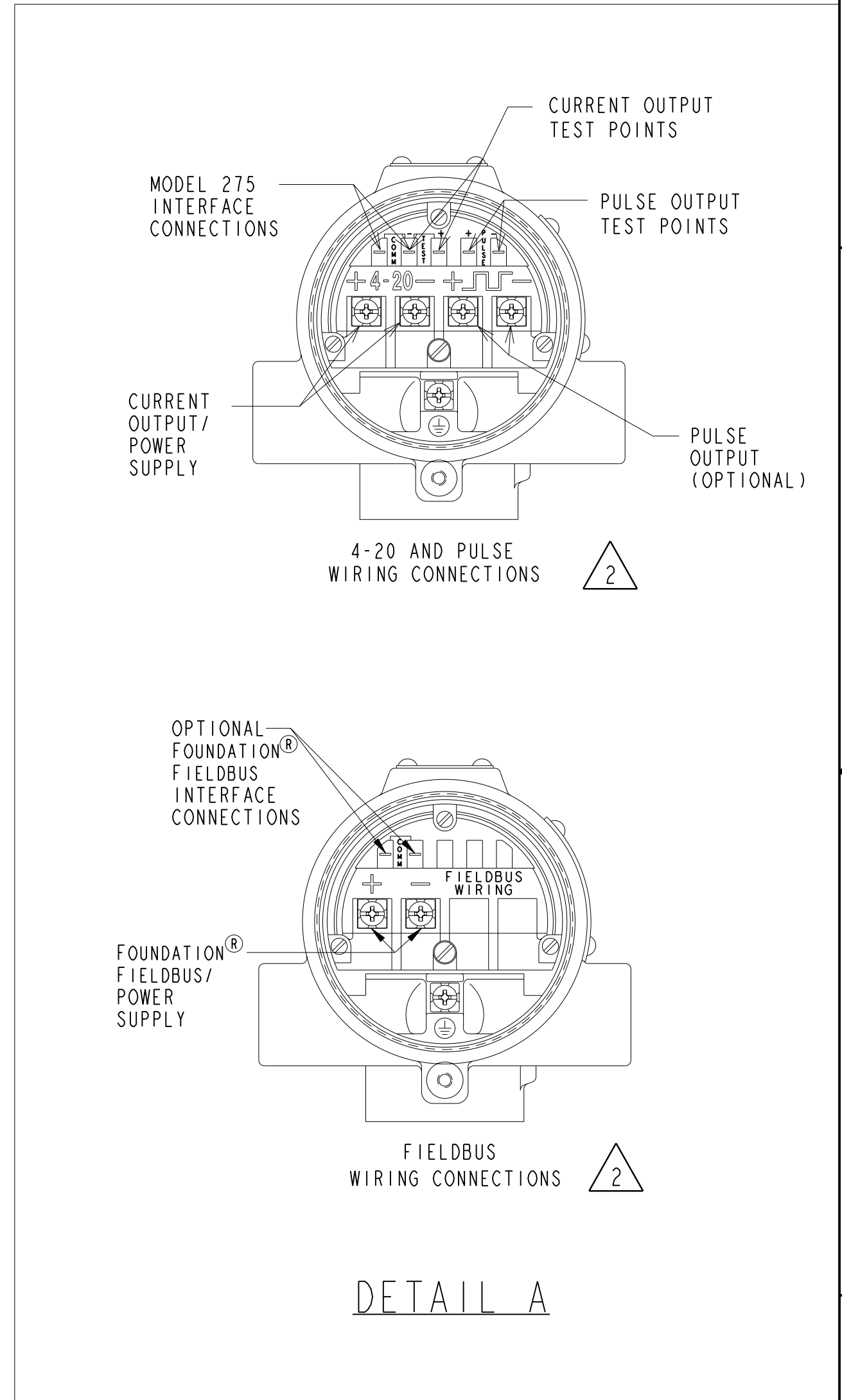
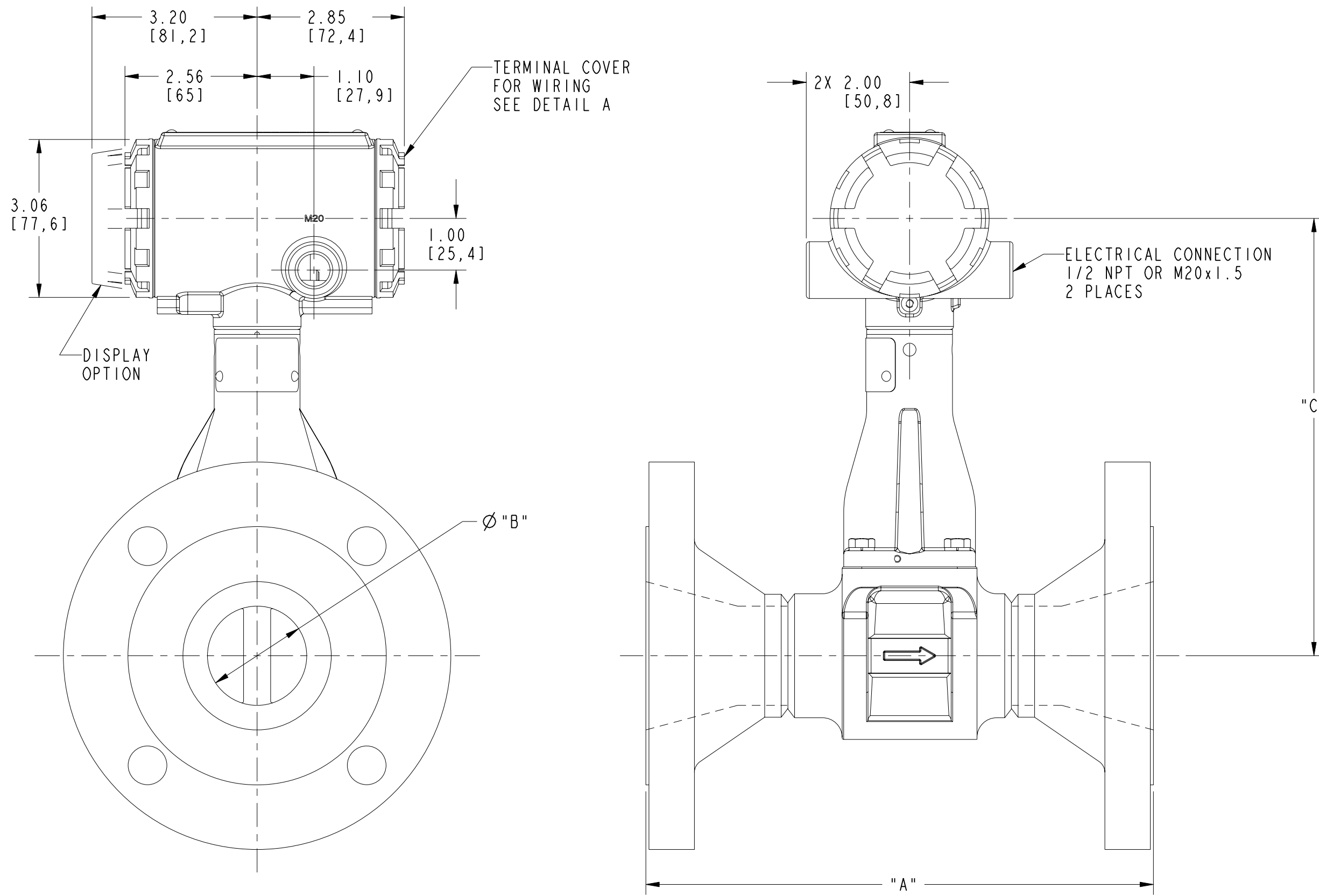
2

1

TABULATION	
DASH NO.	

REVISIONS					
ZONE	REV	DESCRIPTION	CHG. NO.	APP'D	DATE
	AG	CHG LAY LENGTH TOLERANCE TO ±.16	RTC1026038	A.T.L.	5/8/08

1" THRU 12" REDUCER FLANGE



- 3. ROSEMOUNT CERTIFIES THESE DRAWINGS ARE IN ACCORDANCE WITH ROSEMOUNT ENGINEERING SPECIFICATIONS AND ACCURATELY REPRESENT THE EQUIPMENT FURNISHED.
- 2. REFERENCE INSTRUCTION MANUAL FOR DETAIL INSTALLATION INFORMATION AND WIRING CONNECTIONS, ALL MODELS.
- 1. DIMENSIONS ARE IN INCHES. DIMENSIONS SHOWN IN PARENTHESIS ARE IN MILLIMETERS.

CONFIDENTIAL AND PROPRIETARY INFORMATION IS CONTAINED HEREIN AND MUST BE HANDLED ACCORDINGLY.	UNLESS OTHERWISE SPECIFIED DIMENSIONS IN INCHES [mm]. REMOVE ALL BURRS AND SHARP EDGES. MACHINE SURFACE FINISH 125		CONTRACT NO.		EMERSON Process Management ROSEMOUNT 8200 Market Boulevard • Chanhassen, MN 55317 USA
	-TOLERANCES-		DR. D. BROKKE 4/24/02	TITLE	
	.X ± .1 [2,5] .XX ± .02 [0,5] .XXX ± .010 [0,25]		CHK'D	INSTALLATION DRAWING FOR 8800 REDUCER VORTEX FLOWMETER	
	FRACTIONS ± 1/32 ANGLES ± 2		APP'D M. SEVERSON 5/7/02	SIZE C FSCM NO. DRAWING NO. 08800-0009	
DO NOT SCALE PRINT		APP'D GOVT.	SCALE 1:2 WT. SHEET 1 OF 3		

REVISIONS					
ZONE	REV	DESCRIPTION	CHG. NO.	APP'D	DATE
	AG		RTC1026038		

NOMINAL SIZE		A ±.16 [4,1] INCH [mm]	A ±.16 [4,1] ANSI RTJ INCH [mm]	ØB ±.03 [0,8] INCH [mm]	C ±.20 [5,1] INCH [mm]	WEIGHT LB [kg]
1 IN METER DN25	150 LB	7.5 [191]	8.0 [203]	.54 [13,7]	7.6 [193]	11.6 [5,2]
	300 LB	8.0 [203]	8.5 [216]	.54 [13,7]	7.6 [193]	14.2 [6,4]
	600 LB	8.5 [216]	8.5 [216]	.54 [13,7]	7.6 [193]	15.1 [6,9]
	900 LB	9.4 [239]	9.4 [239]	.54 [13,7]	7.6 [193]	20.7 [9,4]
	PN16/40	6.2 [157]	--	.54 [13,7]	7.6 [193]	12.6 [5,7]
	PN100	7.7 [196]	--	.54 [13,7]	7.6 [193]	18.4 [8,4]
	JIS 10K/20K	--	--	--	--	--
	JIS 40K	--	--	--	--	--
1.5 IN METER DN40	150 LB	8.2 [208]	8.7 [221]	.95 [24,1]	7.7 [196]	15.8 [7,2]
	300 LB	8.7 [221]	9.2 [234]	.95 [24,1]	7.7 [196]	21.2 [9,6]
	600 LB	9.3 [236]	9.3 [236]	.95 [24,1]	7.7 [196]	23.8 [10,8]
	900 LB	10.3 [262]	10.3 [262]	.95 [24,1]	7.7 [196]	35.0 [15,9]
	PN16/40	6.9 [175]	--	.95 [24,1]	7.7 [196]	17.5 [7,9]
	PN100	8.2 [208]	--	.95 [24,1]	7.7 [196]	26.2 [11,9]
	PN160	8.4 [213]	--	.95 [24,1]	7.7 [196]	27.7 [12,6]
	JIS 10K/20K	--	--	--	--	--
	JIS 40K	--	--	--	--	--
	2 IN METER DN50	150 LB	9.2 [234]	9.7 [246]	1.49 [37,8]	8.1 [206]
300 LB		9.7 [246]	10.4 [264]	1.49 [37,8]	8.1 [206]	26.8 [12,1]
600 LB		10.5 [267]	10.6 [269]	1.49 [37,8]	8.1 [206]	30.6 [13,9]
900 LB		12.7 [323]	12.9 [328]	1.49 [37,8]	8.1 [206]	60.8 [27,6]
PN16/40		8.0 [203]	--	1.49 [37,8]	8.1 [206]	23.5 [10,7]
PN64		9.1 [231]	--	1.49 [37,8]	8.1 [206]	31.3 [14,2]
PN100		9.6 [244]	--	1.49 [37,8]	8.1 [206]	37.2 [16,9]
PN160		10.2 [259]	--	1.49 [37,8]	8.1 [206]	39.6 [18,0]
JIS 10K		--	--	--	--	--
JIS 20K		--	--	--	--	--
JIS 40K		--	--	--	--	--
3 IN METER DN80		150 LB	9.9 [251]	10.4 [264]	1.92 [48,8]	8.5 [216]
	300 LB	10.6 [269]	11.2 [284]	1.92 [48,8]	8.5 [216]	42.7 [19,4]
	600 LB	11.4 [290]	11.5 [292]	1.92 [48,8]	8.5 [216]	49.5 [22,4]
	900 LB	12.9 [328]	13.0 [330]	1.92 [48,8]	8.5 [216]	73.3 [33,2]
	PN16/40	8.9 [226]	--	1.92 [48,8]	8.5 [216]	33.3 [15,1]
	PN64	10.0 [254]	--	1.92 [48,8]	8.5 [216]	42.4 [19,3]
	PN100	10.5 [267]	--	1.92 [48,8]	8.5 [216]	52.2 [23,7]
	PN160	11.1 [282]	--	1.92 [48,8]	8.5 [216]	57.9 [26,3]
	JIS 10K	--	--	--	--	--
	JIS 20K	--	--	--	--	--
	JIS 40K	--	--	--	--	--
4 IN METER DN100	150 LB	10.3 [262]	10.8 [274]	2.87 [72,9]	9.1 [231]	46.3 [21,0]
	300 LB	11.0 [279]	11.6 [295]	2.87 [72,9]	9.1 [231]	67.0 [30,4]
	600 LB	12.8 [325]	12.9 [328]	2.87 [72,9]	9.1 [231]	94.3 [42,8]
	900 LB	13.8 [351]	13.9 [353]	2.87 [72,9]	9.1 [231]	118.0 [53,5]
	PN16	8.4 [213]	--	2.87 [72,9]	9.1 [231]	36.4 [16,5]
	PN40	9.4 [239]	--	2.87 [72,9]	9.1 [231]	45.9 [20,8]
	PN64	10.4 [264]	--	2.87 [72,9]	9.1 [231]	59.7 [27,1]
	PN100	11.3 [287]	--	2.87 [72,9]	9.1 [231]	76.7 [34,8]
	PN160	12.1 [307]	--	2.87 [72,9]	9.1 [231]	84.7 [38,4]
	JIS 10K	--	--	--	--	--
	JIS 20K	--	--	--	--	--
	JIS 40K	--	--	--	--	--

NOMINAL SIZE		A ±.16 [4,1] INCH [mm]	A ±.16 [4,1] ANSI RTJ INCH [mm]	ØB ±.03 [0,8] INCH [mm]	C ±.20 [5,1] INCH [mm]	WEIGHT LB [kg]
6 IN METER DN150	150 LB	11.6 [295]	12.1 [307]	3.79 [96,3]	9.6 [244]	70.3 [31,9]
	300 LB	12.3 [312]	13.0 [330]	3.79 [96,3]	9.6 [244]	113.1 [51,3]
	600 LB	14.3 [363]	14.4 [366]	3.79 [96,3]	9.6 [244]	185.1 [84,0]
	900 LB	16.1 [409]	16.2 [411]	3.79 [96,3]	9.6 [244]	246.3 [111,7]
	PN16	8.9 [226]	--	3.79 [96,3]	9.6 [244]	59.2 [26,9]
	PN40	10.5 [267]	--	3.79 [96,3]	9.6 [244]	81.9 [37,2]
	PN64	12.1 [307]	--	3.79 [96,3]	9.6 [244]	125.4 [56,9]
	PN100	13.6 [345]	--	3.79 [96,3]	9.6 [244]	162.3 [73,6]
	PN160	14.7 [373]	--	3.79 [96,3]	9.6 [244]	187.9 [85,2]
	JIS 10K	--	--	--	--	--
	JIS 20K	--	--	--	--	--
JIS 40K	--	--	--	--	--	
8 IN METER DN200	150 LB	13.5 [343]	14.0 [356]	5.70 [144,8]	10.8 [274]	133.1 [60,4]
	300 LB	14.3 [363]	14.9 [378]	5.70 [144,8]	10.8 [274]	195.5 [88,7]
	600 LB	16.5 [419]	16.7 [424]	5.70 [144,8]	10.8 [274]	305.2 [138,4]
	PN10	10.4 [264]	--	5.70 [144,8]	10.8 [274]	100.9 [45,8]
	PN16	10.4 [264]	--	5.70 [144,8]	10.8 [274]	100.9 [45,8]
	PN25	11.8 [300]	--	5.70 [144,8]	10.8 [274]	134.0 [60,8]
	PN40	12.5 [318]	--	5.70 [144,8]	10.8 [274]	155.0 [70,3]
	PN64	14.2 [361]	--	5.70 [144,8]	10.8 [274]	220.7 [100,1]
	PN100	15.8 [401]	--	5.70 [144,8]	10.8 [274]	292.9 [132,9]
	JIS 10K	--	--	--	--	--
	JIS 20K	--	--	--	--	--
JIS 40K	--	--	--	--	--	
10 IN METER DN250	150 LB	14.5 [368]	15.0 [381]	7.55 [191,8]	11.7 [297]	182.4 [82,8]
	300 LB	15.8 [401]	16.4 [417]	7.55 [191,8]	11.7 [297]	281.7 [127,8]
	600 LB	19.0 [483]	19.2 [488]	7.55 [191,8]	11.7 [297]	489.9 [222,2]
	PN10	11.9 [302]	--	7.55 [191,8]	11.7 [297]	138.6 [62,9]
	PN16	12.0 [305]	--	7.55 [191,8]	11.7 [297]	148.6 [67,4]
	PN25	13.5 [343]	--	7.55 [191,8]	11.7 [297]	191.0 [86,6]
	PN40	14.8 [376]	--	7.55 [191,8]	11.7 [297]	245.8 [111,5]
	PN64	16.4 [417]	--	7.55 [191,8]	11.7 [297]	314.1 [142,5]
	PN100	18.9 [480]	--	7.55 [191,8]	11.7 [297]	463.5 [210,2]
	JIS 10K	--	--	--	--	--
	JIS 20K	--	--	--	--	--
	JIS 40K	--	--	--	--	--
	12 IN METER DN300	150 LB	16.8 [427]	17.3 [439]	9.56 [242,8]	12.8 [325]
300 LB		18.0 [457]	18.6 [472]	9.56 [242,8]	12.8 [325]	412.2 [187,0]
600 LB		20.5 [521]	20.6 [523]	9.56 [242,8]	12.8 [325]	609.9 [276,6]
PN10		13.1 [333]	--	9.56 [242,8]	12.8 [325]	188.3 [85,4]
PN16		13.9 [353]	--	9.56 [242,8]	12.8 [325]	211.8 [96,1]
PN25		15.0 [381]	--	9.56 [242,8]	12.8 [325]	262.4 [119,0]
PN40		16.8 [427]	--	9.56 [242,8]	12.8 [325]	349.9 [158,7]
PN64		18.8 [478]	--	9.56 [242,8]	12.8 [325]	444.2 [201,5]
PN100		21.2 [538]	--	9.56 [242,8]	12.8 [325]	672.1 [304,8]
JIS 10K		--	--	--	--	--
JIS 20K		--	--	--	--	--
JIS 40K		--	--	--	--	--

FOR DISPLAY OPTION, ADD 0.2 LB (0.1 kg)

Rosemount Inc. 8200 Market Boulevard Chanhassen, MN 55317 USA		CAD Maintained, (Pro/E)	
DR.	SIZE C	FSCM NO.	DRAWING NO. 08800-0009
SCALE: 1:1	WT.	SHEET 2 OF 3	

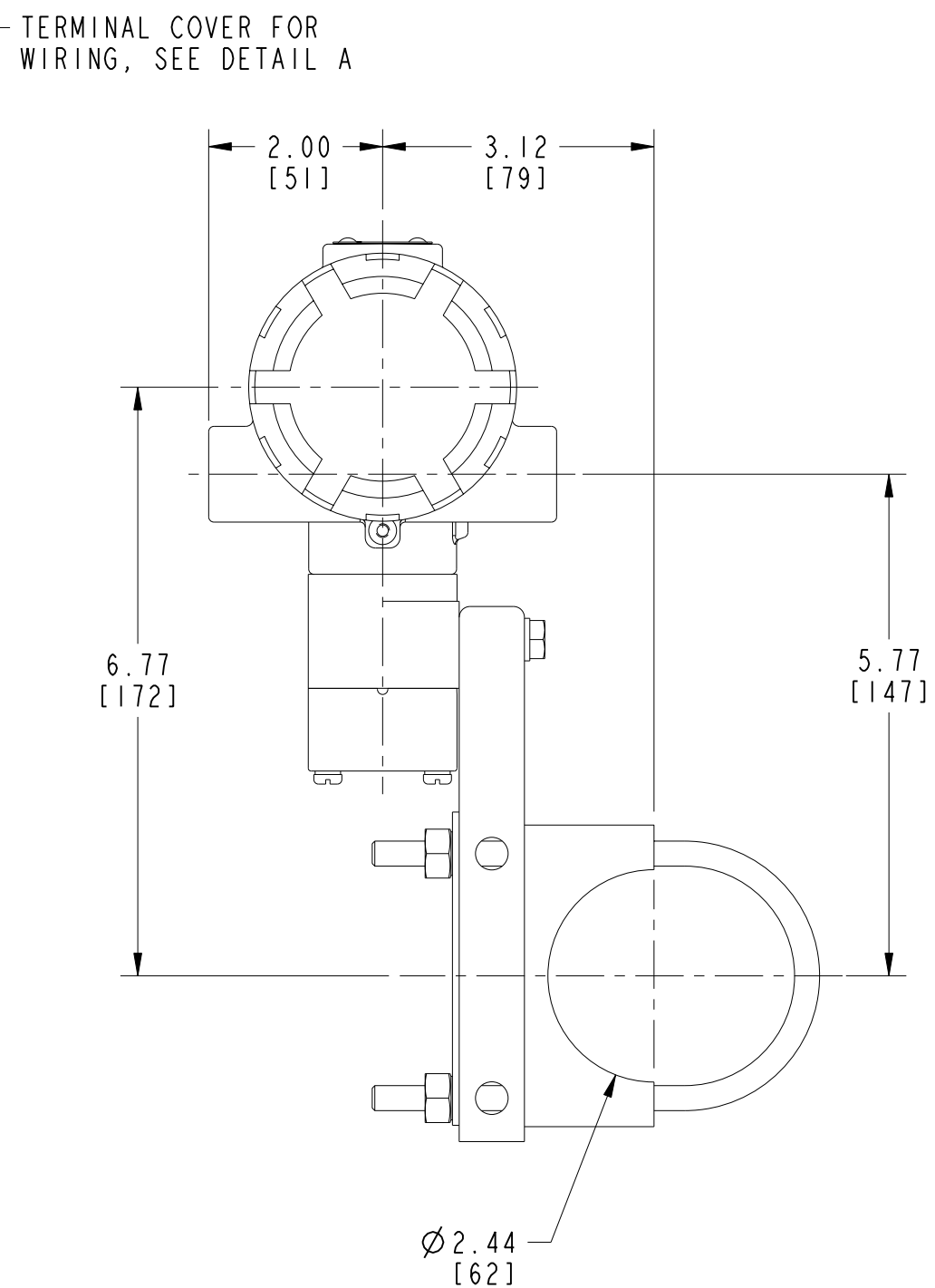
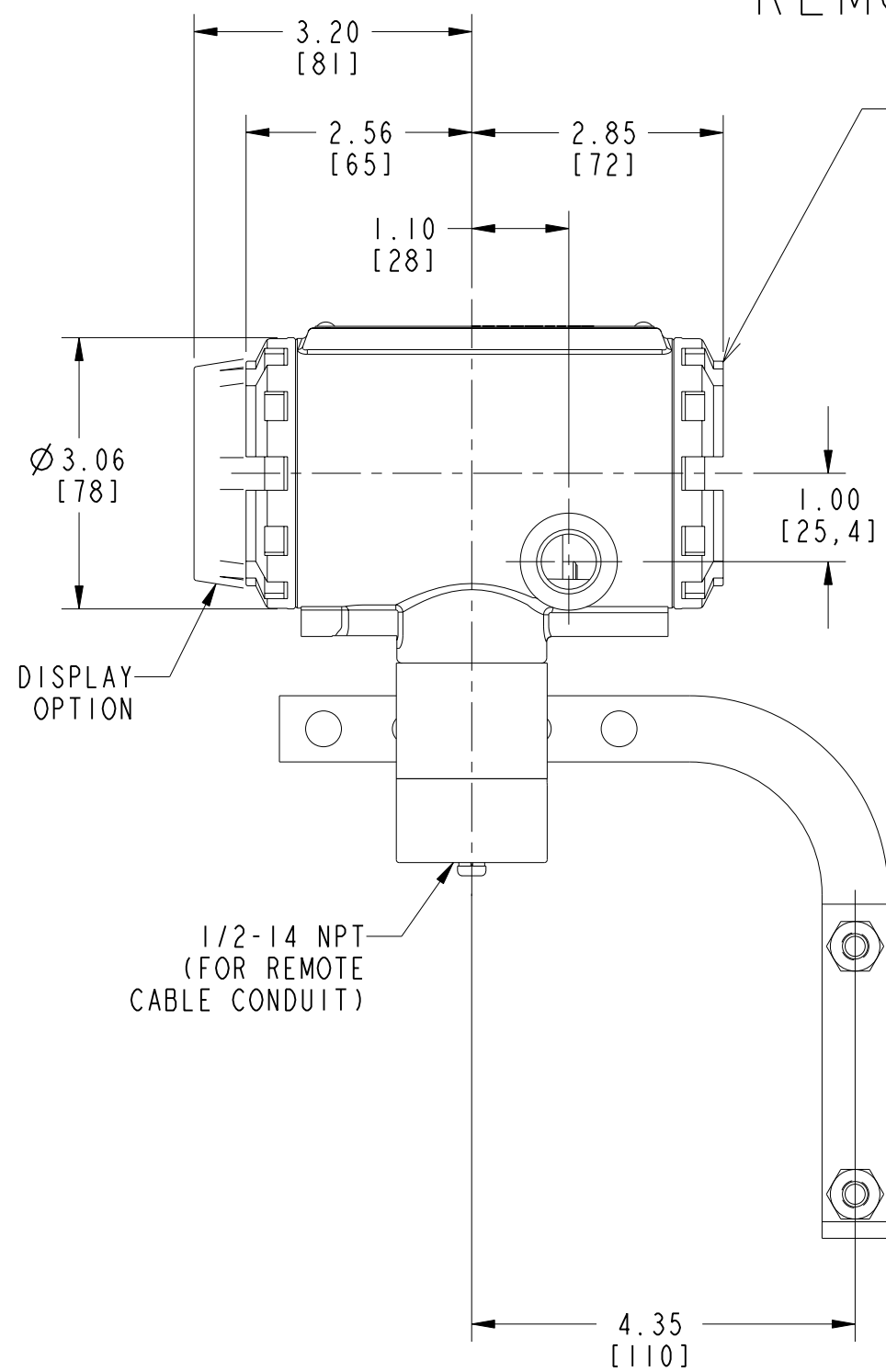
4

3

2

1

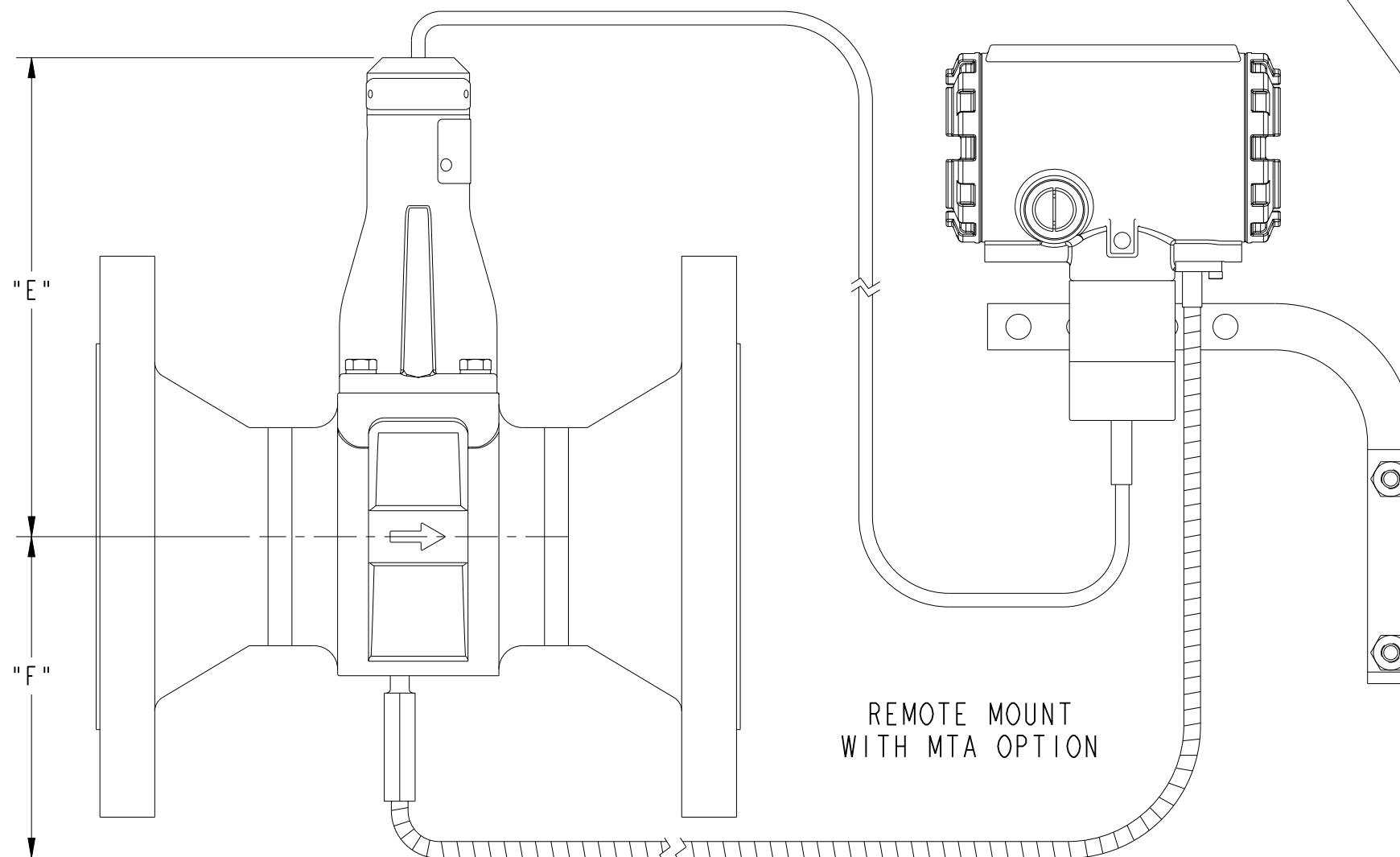
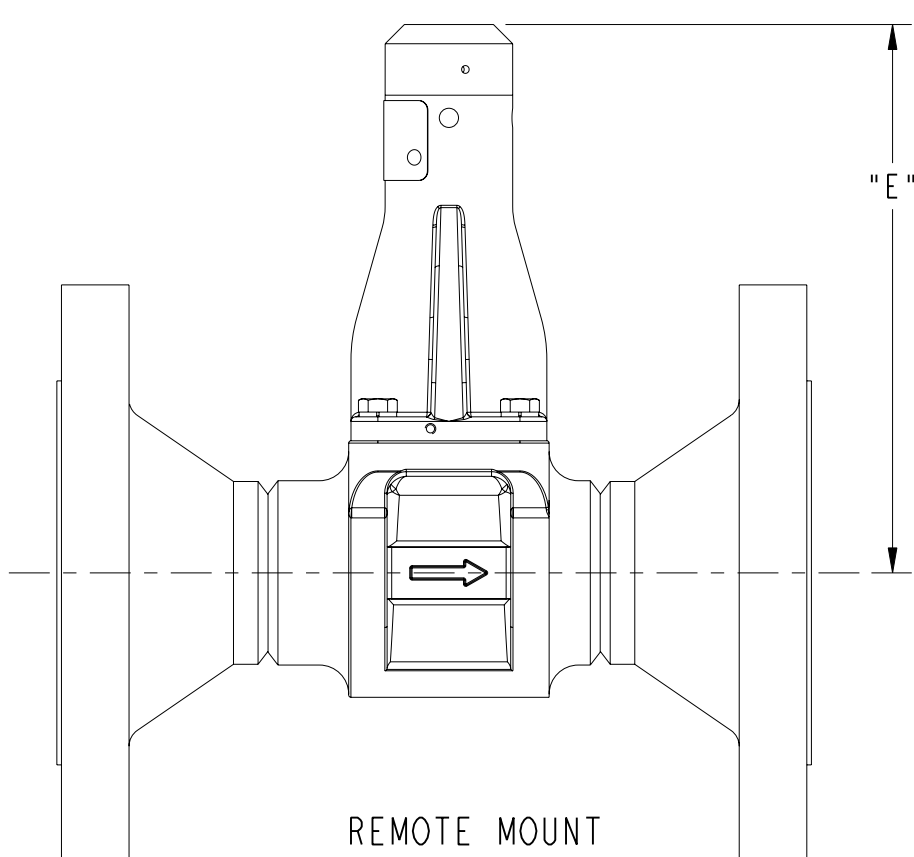
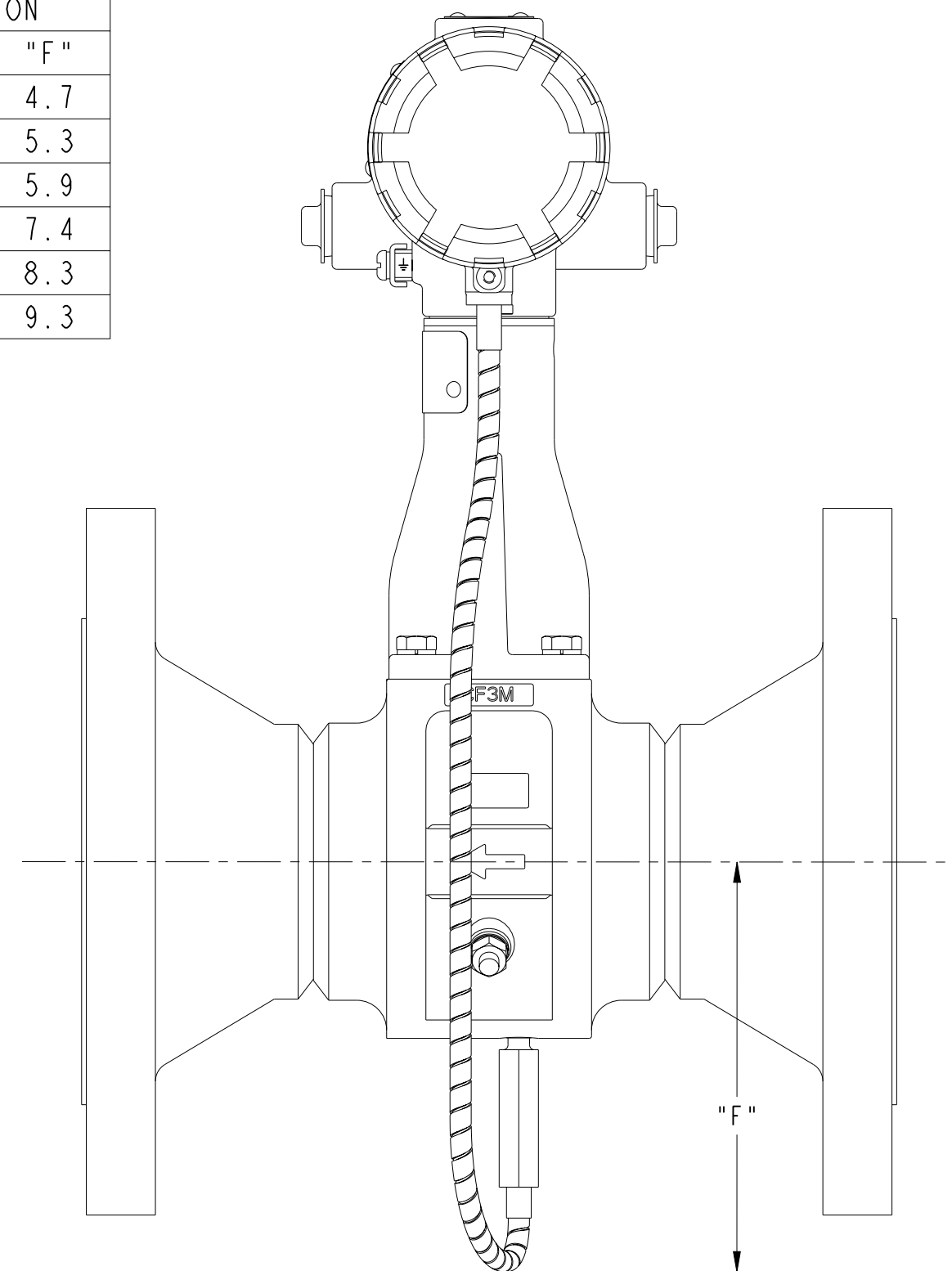
REMOTE MOUNT



REVISIONS					
ZONE	REV	DESCRIPTION	CHG. NO.	APP'D	DATE
	AG		RTC1026038		

MTA OPTION 3" - 12"

MTA OPTION	
LINE SIZE	"F"
3	4.7
4	5.3
6	5.9
8	7.4
10	8.3
12	9.3



REMOTE MOUNT		
NOMINAL SIZE INCH [mm]	"E"	"F"
1" METER	6.4 [162]	-
1.5" METER	6.5 [165]	-
2" METER	6.8 [173]	-
3" METER	7.2 [183]	4.7 [119]
4" METER	7.8 [198]	5.3 [135]
6" METER	8.3 [211]	5.9 [150]
8" METER	9.5 [241]	7.4 [188]
10" METER	10.4 [264]	8.3 [211]
12" METER	11.4 [290]	9.3 [236]

Rosemount Inc.
8200 Market Boulevard
Chanhausen, MN 55317 USA

CAD Maintained, (Pro/E)

DR.	SIZE C	FSCM NO.	DRAWING NO.	08800-0009
	SCALE: 1:2	WT.	SHEET 3 OF 3	