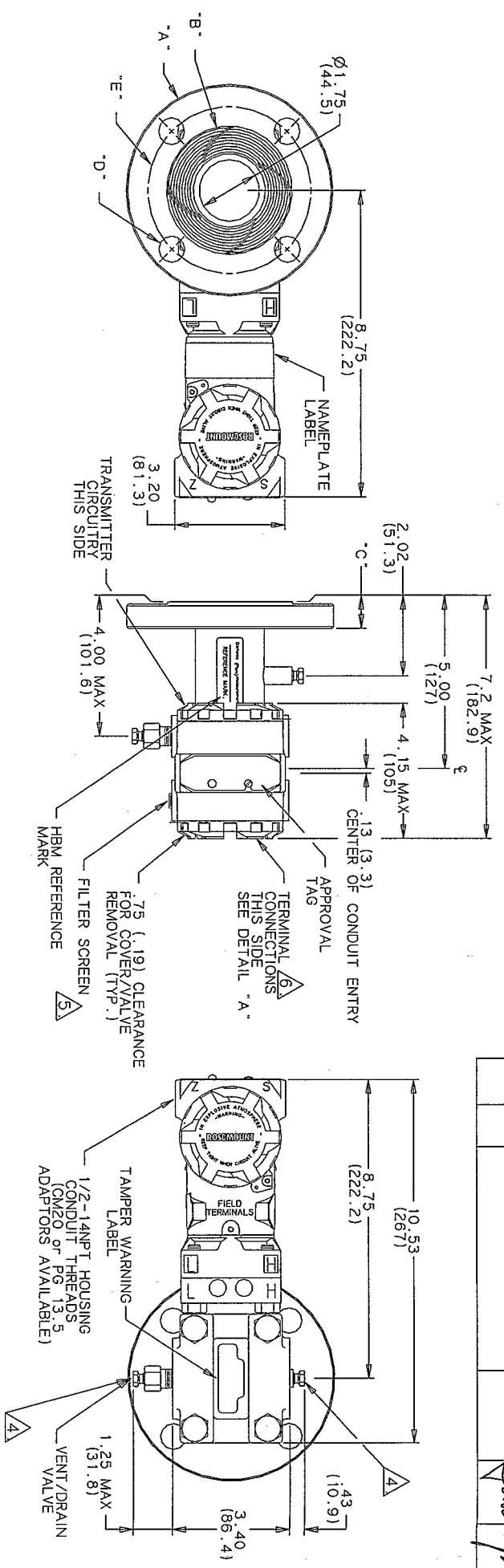


REVISIONS		APP'D	DATE
ZONE	REV	DESCRIPTION	
A	NEW RELEASE	656359	<i>[Signature]</i>



FLANGE CODE	SIZE	RATING	FLANGE DIA. A	RAISED FACE DIA. B	FLANGE THK C	NUMBER AND DIA. OF BOLT HOLES D	HOLE PATTERN DIAMETER E	TRANSMITTER WEIGHT (KG)
A/C	2"	150#	6.00 (152.4)	3.62 (92)	.75 (19)	4X .75 (19)	4.75 (121)	18.2 (8.3)
B/D	2"	300#	6.50 (165.1)	3.62 (92)	.88 (22)	8X .75 (19)	5.00 (127)	19.5 (8.9)
E/G	3"	150#	7.50 (190.5)	5.00 (127)	.94 (24)	4X .75 (19)	6.00 (152)	24 (10.9)
F/H	3"	300#	8.25 (209.5)	5.00 (127)	1.12 (28)	8X .88 (22.3)	6.62 (168)	29 (13.2)

NOTES:

- ROSEMOUNT INC. CERTIFIES THESE DRAWINGS ARE IN ACCORDANCE WITH ROSEMOUNT ENGINEERING SPECIFICATIONS AND ACCURATELY REPRESENT THE EQUIPMENT FURNISHED.
- DIMENSIONS SHOWN IN PARENTHESES ARE IN MILLIMETERS.
- FOR MODEL NUMBER SELECTION, SEE TABLE 1.
- .75" (19) CLEARANCE REQUIRED FOR VALVE REMOVAL.
- LEAVE THIS AREA OPEN TO ATMOSPHERE FOR GAGE REMOVAL.
- .75" (19) CLEARANCE DIMENSION REQUIRED FOR COVER REMOVAL.
- FLANGE THICKNESS DIMENSION INCLUDES RAISED FACE THICKNESS OF 1/16" (1.6).
- STAINLESS STEEL HOUSING ADDS 3.1lbs (1.4kg).

UNLESS OTHERWISE SPECIFIED DIMENSIONS IN INCHES

-TOLERANCE-

DECIMALS .X ± .1	FRACTIONS ± 1/32
.XX ± .02	ANGLES ± 2°
.XXX ± .010	

DO NOT SCALE PRINT

DR. -	APP'D	TITLE
	DRAWING	ROSEMOUNT® EDEN PRAIRIE, MINNESOTA
		OUTLINE INSTALLATION DRAWING FOR MODEL 3001 HYDROSTATIC TRANSMITTER
SIZE	FSCM. NO.	DRAWING NO.
A	04274	03001-1011
SCALE: NONE	WT.	SHEET 1 OF 2

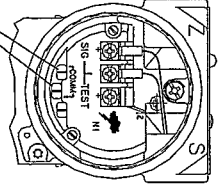
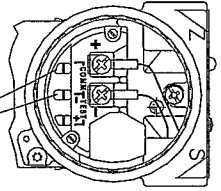
TABLE 1

MODEL	3001CH	3001SH	3001CH HIGH PROCESS TEMPERATURE TRANSMITTER	3001SH HIGH PROCESS TEMPERATURE TRANSMITTER	HYDROSTATIC PRESSURE TRANSMITTER
CODE	D	G	DIFFERENTIAL PRESSURE GAGE PRESSURE		
CODE	2	3	0-9 PSIG (0-62 kPa)	0-30 PSIG (0-207 kPa)	0-150 PSIG (0-1.04 MPa)
CODE	4		0-150 PSIG (0-1.04 MPa)		
CODE	A		DIGITAL SIGNAL BASED ON HART PROTOCOL		
CODE	M		1-5 VOLTS WITH DIGITAL SIGNAL BASED ON HART PROTOCOL		
CODE	A		FLANGE MATERIAL	FLANGE SIZE	
CODE	B		316 SST	2 - 150#	
CODE	C		316 SST	3 - 300#	
CODE	D		316 SST	2 - 150#	
CODE	E		316 SST	3 - 300#	
CODE	F		316 SST	3 - 300#	
CODE	G		316 SST	3 - 150#	
CODE	H		316 SST	3 - 300#	
CODE	1		CO-CR-NI		
CODE	A		O-RING		
CODE	A		GLASS-FILLED TFE		
CODE	H		INERT		
CODE	P		SYLTHERM 800		
CODE	N		PROPYLENE GLYCOL AND H2O		
CODE			NEOBEE M20		
CODE			ISOLATOR		
CODE	2		SST		
CODE	3		HAST C		
CODE	1		SILICONE		
CODE			HOUSING MATERIAL AND CONDUIT ENTRY SIZE		
CODE	A		EPOXY-POLYESTER-COVERED ALUMINUM	1/2 NPT	
CODE	B		EPOXY-POLYESTER-COVERED ALUMINUM	CM 20	
CODE	C		EPOXY-POLYESTER-COVERED ALUMINUM	PG 13.5	
CODE	D		EPOXY-POLYESTER-COVERED ALUMINUM	1/2 NPT	
CODE	J		316 SST	CM 20	
CODE	K		316 SST	PG 13.5	
CODE	L		316 SST	1/2 Pf	
CODE	M		316 SST		
CODE			SPECIALS		
CODE			OPTIONAL CHOICES		
CODE			OPTIONS		
CODE			xxxx		
CODE	E5		FACTORY MUTUAL (FM) EXPLOSION-PROOF APPROVAL		
CODE	E6		FACTORY MUTUAL (FM) NON-INCENDIVE AND INTRINSIC SAFETY APPROVAL		
CODE	E7		CANADIAN STANDARDS ASSOCIATIONS (CSA) EXPLOSION-PROOF AND NON-INCENDIVE APPROVAL		
CODE	E8		CANADIAN STANDARDS ASSOCIATIONS (CSA) INTRINSIC SAFETY APPROVAL		
CODE	T1		E6 AND I6 COMBINATION (REQUIRES 42.4 V dc MAX. POWER SUPPLY)		
CODE	A1		BASEEFA/GENELEC INTRINSIC SAFETY CERTIFICATION		
CODE			BASEEFA TYPE N CERTIFICATION		
CODE			PB/GENELEC FLAMEPROOF APPROVAL		
CODE			STANDARDS ASSOCIATION OF AUSTRALIA (SSA) INTRINSIC SAFETY APPROVAL		
CODE			STANDARDS ASSOCIATION OF AUSTRALIA (SSA) FLAMEPROOF SAFETY APPROVAL		
CODE			CEESI/GENELEC FLAMEPROOF APPROVAL		
CODE			INTEGRAL TRANSIENT PROTECTION (SEE DETAIL "A")		
CODE			ANALOG OUTPUT		

DETAIL "A" - WIRING CONNECTION

STANDARD WIRING CONNECTION

TRANSIENT PROTECTION WIRING CONNECTION (OPTION T1)



MODEL 268 SMART FAMILY INTERFACE CONNECTIONS.

ROSEMOUNT INC.		MINNEAPOLIS, MINN.	
DR		SIZE	FSCM. NO.
ISSUE		A	04274
THIS DRAWING WAS CREATED ON CAD		DRAWING NO.	
VELLUM MASTER IS NOT TO BE CHANGED		03001-1011	
DRAWING IS ARCHIVED ON MAGNETIC TAPE		SHEET 2 OF 2	
FOR ECO CHANGES.			
FILE NAME:			