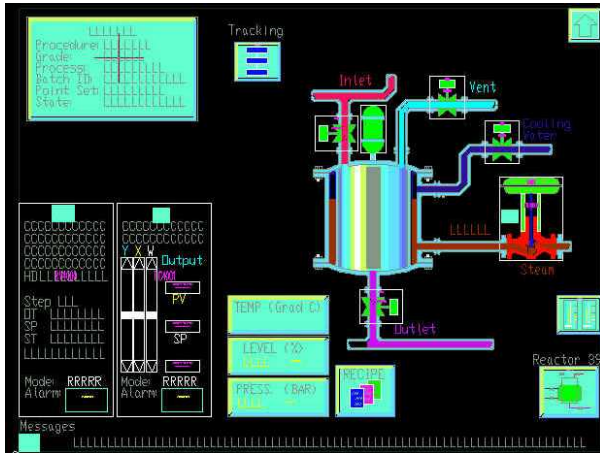
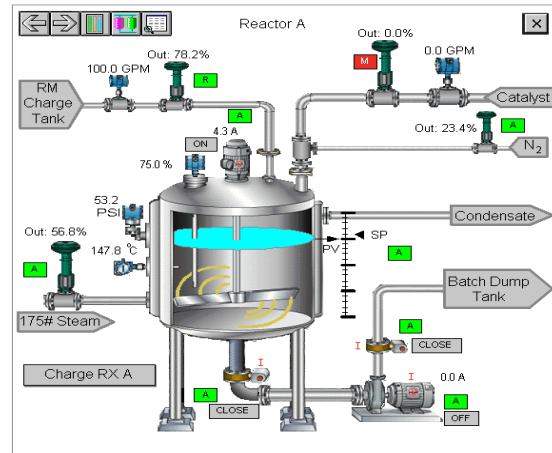


# RS3™ to DeltaV™ Display Transition Services



RS3™ Display (Before)



DeltaV™ Display (Design Service—After)

- Transitions RS3™ displays to DeltaV™ displays
- Improves the operator interface—takes full advantage of new display technologies
- Establishes a plant graphics standard and graphics library
- Employs the services of expert engineers experienced with both RS3 and DeltaV equipment
- Reduces the time, effort, and risks associated with manual display builds

## Introduction

Emerson Process Management offers design, comprehensive, and economy services to meet a variety of transition needs.

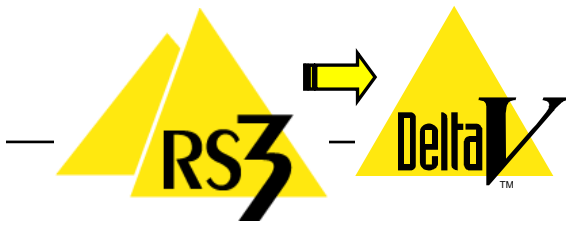
The display transition **design service** is your best choice when migrating from RS3™ consoles to the DeltaV™ operator interface. Taking full advantage of new technologies, graphics standards and onboard

DeltaV system capabilities, this service delivers the optimal operator interface for your plant.

In the **design service**, the Emerson Process Management team works with your process and graphics personnel to develop a graphics standard, incorporating the new display technology and your plant operating procedures and philosophies. Using this new graphics standard and elements from the DeltaV libraries, the team develops your graphics library. Then, they translate your existing RS3 graphics into DeltaV operator interface graphics.

The display transition **comprehensive service** provides DeltaV displays that are functional equivalents of the original RS3 displays. Combining the expertise of our engineering staff with the use of an automated conversion utility, the comprehensive service generates DeltaV operator interface displays with 100% of the original RS3 display functionality. The service greatly reduces the time, effort and risk associated with converting your graphic displays.

Design and comprehensive services feature complete DeltaV displays, ready for checkout and use at the plant. They are 100% compatible with DeltaV Operate for easy maintenance.



The display transition **economy service** easily and cost-effectively converts RS3 graphic elements to the DeltaV format. These converted elements constitute the foundation for further DeltaV graphic development.

The economy service converts most, but not all, of the graphic elements used in RS3 graphic displays. You can complete the displays using the DeltaV Operate editor.

## Benefits

**Improved operator interface using DeltaV technology.** The transition service takes advantage of the latest in DeltaV operator interface capabilities. Your operators will have a consistent, easy-to-understand and easy-to-use interface, which helps them run the plant more effectively.

**Leverage expertise at Emerson Process Management.** Emerson Process Management is staffed by engineers who know the RS3 and DeltaV systems extremely well. They use that expertise to get the most out of the DeltaV operator interface. They will work with you to create an operator interface that reinforces and supports your plant operating procedures.

**Reduce the time and effort spent on building new displays.** Keep your personnel and their capabilities focused on more critical plant priorities.

**Manage the pace of your technology investments** by phasing the upgrades. Immediately deploy new DeltaV operator interface technologies that work with your existing controls, enabling you to plan future automation investments while enjoying the benefits of enhanced capabilities.

## Service Description

Included in all transition services:

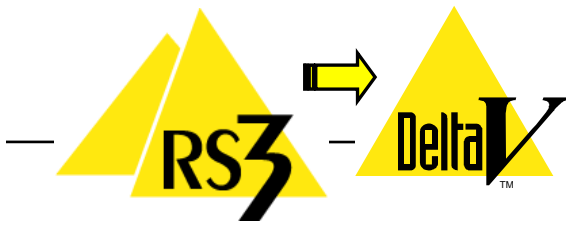
- **Expert project management** using certified and proven ISO-9000 methodology.
- **Transition** of RS3 graphics to DeltaV operator interface graphics.

## Options

To enhance your transition project, the following service options should be considered.

- **Custom dynamic graphic element design.** Emerson Process Management can develop customized 2D and 3D graphic elements and DeltaV dynamic objects to replace grouped objects for improving the ease of maintenance of your converted DeltaV graphic displays.
- **Development of a plant graphic standard.** This standard will document and describe the symbols, guidelines, color schemes, gray scale, and other conventions that the team develops. It serves as a reference to ensure ongoing consistency as you expand and update the system.
- **Development of a plant graphics library.** Use elements from existing DeltaV libraries with your new graphic standard to generate graphic elements that can easily be reused.
- **Site Services.** At any time during the development of the displays, site visits may be advantageous. When the display transitions are completed, the displays should be checked out at the plant. Emerson Process Management sales/services offices can supply engineers to assist with or lead this effort. All site work is priced on a time and materials basis.
- **Operator Training.** Emerson Process Management provides comprehensive training for your entire staff, including engineering, safety, maintenance, and operations personnel. Emerson's training formats—eLearning, traditional classroom, onsite and dynamic simulation-based training—apply hands-on and learn-by-doing approaches to ensure that you achieve your training goals.

Contact your local Emerson Process Management office for more details about these options.



## Summary

By having Emerson Process Management transition your displays, you keep your own staff's valuable attention focused on site priorities. When migrating from RS3 to the DeltaV operator interface, the transition service takes full advantage of the new

display capabilities and creates a graphic standard and library tailor-made to fit your plant and your operating procedures. Migration to the DeltaV operator interface reduces the maintenance costs of your current operator interface, while laying a foundation for future technology investments.

## Specifications

RS3 to DeltaV Display Transition—Transition Service Specifications	
Inputs	<ol style="list-style-type: none"> <li>1. Customer discussions and meetings, as well as existing plant standards and conventions concerning graphic displays.</li> <li>2. Up-to-date MTCC database and control algorithms "BACKUP" tape.</li> </ol>
Output	DeltaV display files on CD-ROM media
Output file format	DeltaV version v7.x and later

## Graphic Element Conversion Specifications

RS3 Graphic Elements—Conversion Capability of Economy Transition Service		
Converted	Converted Elements - Comments	Not Converted*
Line	<p>"Tapestry" Graphics are supported by use of slide bars</p> <p>RS3 symbols are converted as DeltaV grouped objects</p> <p>Alarm information is supported through the standard DeltaV alarm window</p> <p>Trend information is provided through the faceplate trend detail display</p>	Target
Circle		Custom Symbol
Box or Rectangle		Anchor
Triangle		Page Forward
Arc		Page Back
Tag		Permanent Faceplates
BLKDES		Batch Input Window
Mode		Grouping
Link		Batch Recipe Window
Units		Batch Faceplate
Disc		Alarm Information
TICBAR		Trend Information
HDEV		
VDEV		
Text		
Icon		
Thing Objects		

\*For 100% conversion of graphic elements, please ask about the *comprehensive* or *design* services.

