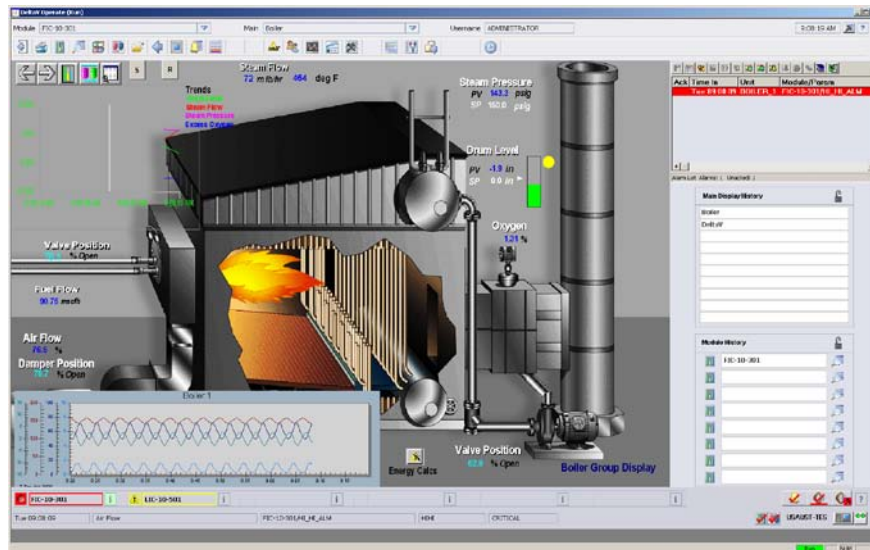


DeltaV™ Operate for RS3™



Operate your automation system with DeltaV™ Operate for RS3™, an excellent console upgrade for MTCC® and ROS® consoles

- State-of-the-art operator interface
- Monitor and control RS3™ and DeltaV™ points from a single Operator Station
- Expand your RS3 system with DeltaV Operator Stations and controllers
- Monitor the health of your plant and process equipment

Introduction

Do you want to operate your RS3™ process control system with a user-friendly interface, state-of-the-art graphics, process alarms prioritized by the user, and [system-wide, built-in security](#)? Run your RS3 control system using DeltaV™ Operate for RS3. The operator station combines standard DeltaV Operate software and DeltaV Operate for RS3 software. This allows the DeltaV operator station to access RS3 points through the RS3 Network Interface (RNI™).

Take advantage of [single-click access](#) to graphics, directories, and other applications.

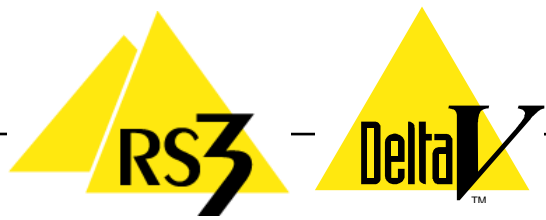
You get the most from your investment in RS3 controllers with DeltaV Operate for RS3. DeltaV Operate for RS3 allows you to keep your RS3 controllers and I/O in place and controlled by a DeltaV Operator Station.

Benefits

Introduce a state-of-the-art operator interface.

DeltaV Operate for RS3 provides a powerful environment for process operations with built-in features for easy information access. Whether you are viewing the highest-priority alarm, the next display, or detailed module information, common operator navigation is consistent and intuitive. Standard faceplates and detail displays provide a consistent operating philosophy for all modules.

Monitor and control RS3 and DeltaV points from a single Operator Station. With DeltaV Operate for RS3, a single operator station can monitor and



control points from both RS3 and DeltaV systems. This provides a standard operating desktop to fit your specific operational philosophies and work preferences.

Expand your RS3 system with DeltaV Operator Stations and controllers. Once the DeltaV Control Network is in place your control system may be expanded with DeltaV controllers and I/O.

DeltaV points can be displayed on the DeltaV Operate for RS3 station. Additionally, RS3 points and DeltaV points can be combined on the same graphic.

Monitor the health of your plant and process equipment. Alarm prioritization, presentation and management direct operators to the most important alarms. Alarm banners provide constant visibility and access to highest-priority alarms. Alarm annunciation applies for points from RS3 and DeltaV controllers.

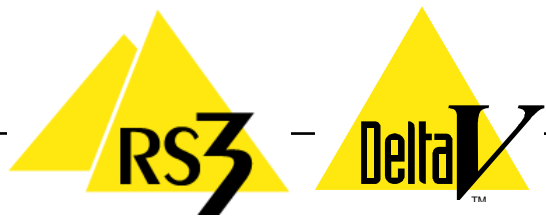


Prebuilt RS3™ faceplate and detail display graphic templates facilitate a quick start

Maximize your display engineering efficiency.

Emerson offers services for generating your new DeltaV displays. Learn how RS3 displays can be automatically converted or how new display designs can optimize effectiveness of your new DeltaV Operate for RS3 console. For more information, see RS3™ to DeltaV™ Display Transition Services data sheet at

http://www2.emersonprocess.com/siteadmincenter/PM%20PSS%20Services%20Documents/Modernization/RS3/SDS_RS3_Display.pdf.



Product Description and Specification

DeltaV Operate for RS3 is designed with operators in mind. The desktop layout and configurable toolbars make navigation easy. DeltaV faceplates may access continuous and discrete RS3 control block registers while DeltaV Detail Displays allow easy adjustment of RS3 tuning parameters and alarm limits.

DeltaV Operate for RS3 uses the standard DeltaV Operate graphical system. This graphical system is based on iFix technology and features advanced screen dynamics.

Display Configuration. Display configuration is loaded with *pre-defined functionality* such as faceplates, trends, alarm summaries and detail Displays. The larger screen area acts just like a smaller screen, so *no special operator training* is required. An operator can simply select a faceplate or other window and drag it to another screen area on a different monitor, if desired.

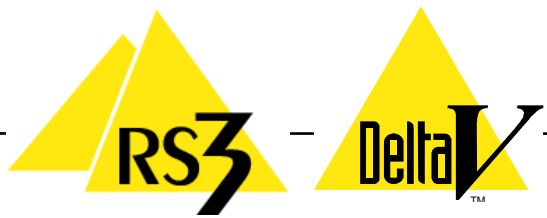
Accessing RS3 Data. DeltaV Operate for RS3 accesses RS3 values through the RS3 RNI. Up to three DeltaV Operate for RS3 stations may access one RNI. Data exchange between the DeltaV Operate for RS3 station and the RS3 system is bi-directional. Operators may both read and write data. RS3 alarm and event journals are also supported by DeltaV Operate for RS3.

Dual/Quad Monitor Support. DeltaV Operate for RS3 supports dual or quad Monitors. Dual or quad monitors provides *more screen space* for a single operator to view process information. This means not having to purchase another workstation, or forcing the operator to work on a smaller screen and having less than the optimal amount of process information easily viewable.

DeltaV Operate for RS3 is compatible with ABC Batch. With dual or quad monitors, you can view ABC batch steps on one monitor without losing view of the process, which is displayed on the other monitors.



View ABC Batch progress while keeping operating displays in full view. Displays can be exchanged between screens with a single mouse click.



DeltaV Operate for RS3 Product Architecture.

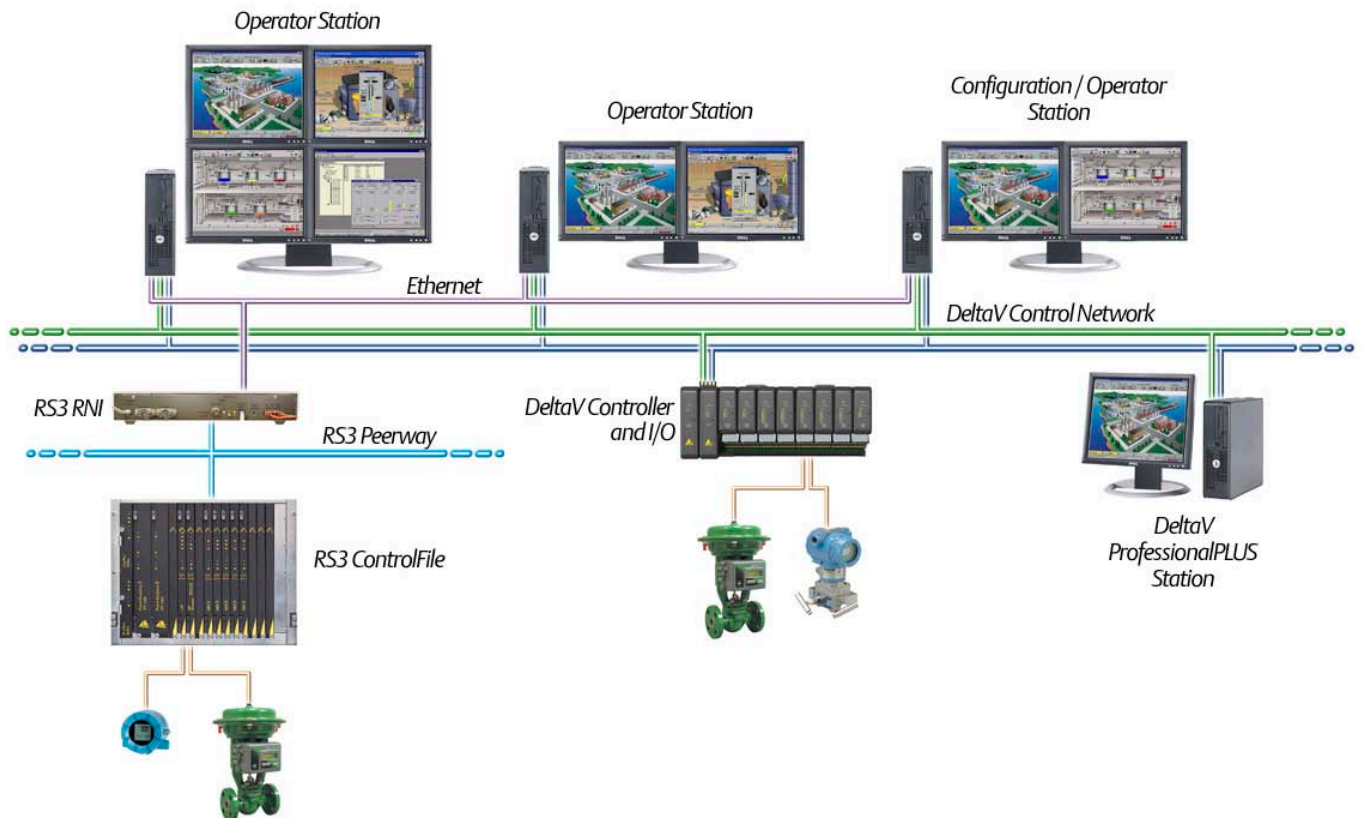
The DeltaV Operate for RS3 workstation includes network adapter cards that interface with the DeltaV Control Network and the RS3 network. When the DeltaV Control Network is established, DeltaV controllers and Application Stations may be added. This allows you to expand your control system taking advantage of new DeltaV technology.

Enhance your control system with DeltaV.

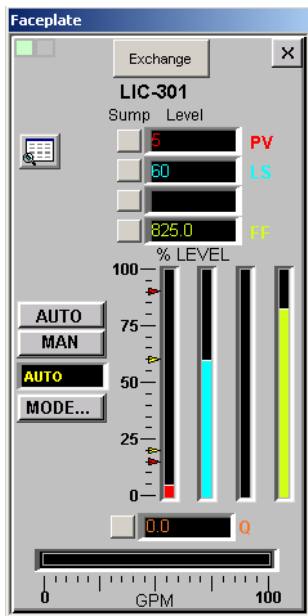
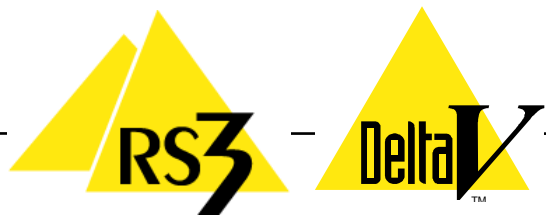
Expanding your system with DeltaV equipment

opens to you many options and features not available in RS3. These features allow you to control your process better. Using DeltaV technology also opens to you many new choices, such as FOUNDATION FieldBus and other bus technologies.

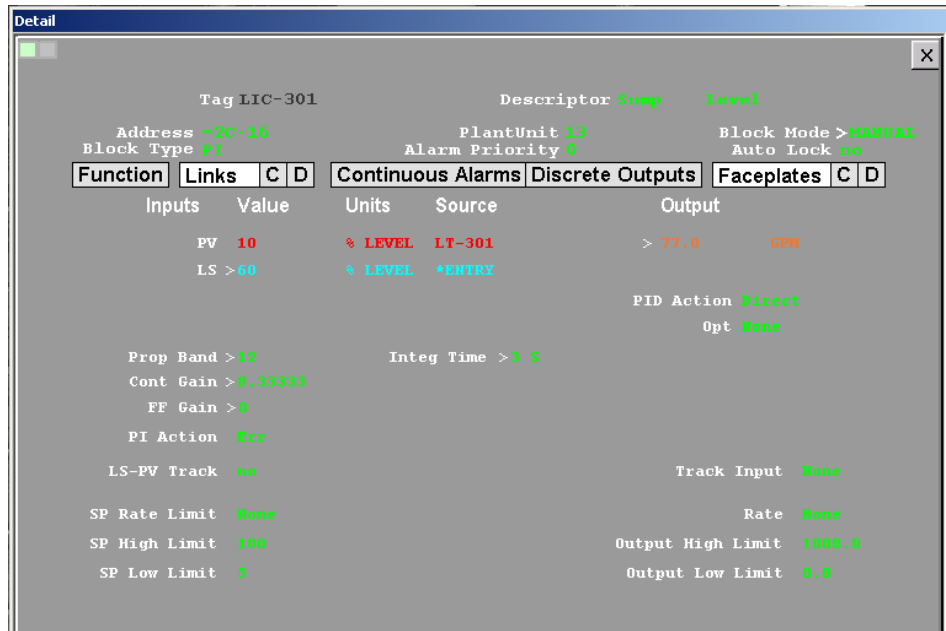
Note: The DeltaV options and new technologies are restricted to DeltaV devices. These options will not interoperate with RS3 points.



DeltaV™ Operate for RS3™ Architecture



DeltaV™ faceplate for RS3™ control blocks

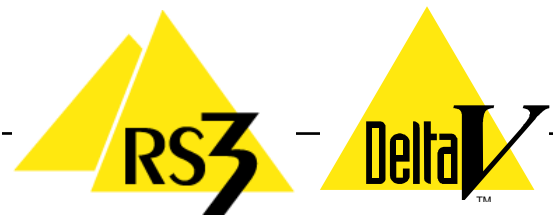


DeltaV™ detail display for RS3™ control blocks

Options

To enhance your DeltaV Operate for RS3 Station, the following options may be added. These options apply only to the DeltaV half of the system architecture.

- **Batch Executive (250 DSTs or less).** Executes and schedules your recipes and resources.
- **Batch Operator Interface.** Uses operator graphics to start, monitor, and operate your batch process.
- **DeltaV Tune.** Keeps in sync with your closed loop and monitors processes to determine tuning parameters.
- **Diagnostics.** Instantaneously checks out the health of your DeltaV system
- **Dual / Quad Monitor.** Two or four screens are better than one for monitoring your operations.
- **Event Chronicle.** Captures events such as alarms and operator changes and stores them.
- **Excel Add-in.** Accesses any online data and brings it into your copy of Excel.
- **FOUNDATION FieldBus and the DeltaV system** Accesses status and diagnostic data from FieldBus devices and monitor their performance.
- **Recipe Studio.** Configures recipes (with formulations) and creates the steps for successful batch production.

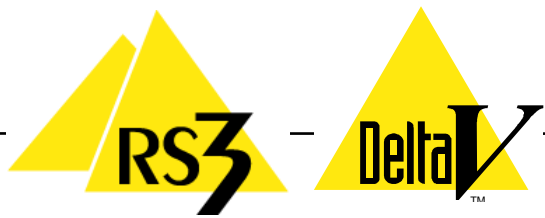


Ordering Information

Description	Number of Tags	Model Number
DeltaV Operate for RS3 - Configure/Operator Station	250	6220DORCNF1
	500	6220DORCNF2
	1000	6220DORCNF3
	2500	6220DORCNF4
	Unlimited	6220DORCNF5
DeltaV Operate for RS3 - Operator Station		6220DOROPER

Ordering Notes

- DeltaV Operate for RS3 includes software media (CD), documentation, and appropriate software license. License upgrades are available.
- One DeltaV Operate for RS3 Configure/Operator Station is required per RNI (RS3 Network Interface).
- Each DeltaV Operate for RS3 Configure/Operator Station will support two (2) DeltaV Operate for RS3 Operator Stations.
- One RS3 RNI will support up to three (3) DeltaV Operate for RS3 Stations; one Configure/Operator Station and two Operator Stations. RNIs supporting DeltaV Operate for RS3 cannot also support ROS stations or third-party applications.
- No additional RNI software is required. A subset of RNI “Boot and API” software is included on the DeltaV Operate for RS3 CD.
- RS3 Peerway supports up to three (3) RNIs.
- DeltaV Operate for RS3 Software does not include RNIs, PCs, monitors, or networking hardware. These components must be ordered separately.
- One ProfessionalPLUS Station is required for each DeltaV system. DeltaV Operate for RS3 cannot be installed on the ProfessionalPLUS Station. The ProfessionalPLUS station requires a 25 DST license minimum. Additional DST licenses may be required, depending upon the number of DeltaV controller DSTs.
- Each DeltaV Operate for RS3 station requires a 100 DST minimum VE2104 Operator license. Additional DST licenses may be required, depending upon the number of DeltaV controller DSTs.
- DeltaV media kits must be ordered separately.
- RS3 configuration and diagnostics requires a MTCC or System Manager.



Prerequisites

- Minimum Hardware Requirements: Intel Pentium III, 667 mHz, 256 MB RAM, 10 Gb hard disk space, 512 KB cache, dual monitors.
- Requires DeltaV v7.2 through v10.3.
- Requires RS3 Base System Software P1R3.4 or later.
- RS3 Controllers must be loaded with P1 images.
- Requires MPC2 and MPC5 controllers.
- Communication across HIA's is not recommended with this product.
- Peerway IdleM Time must be $\geq 30\%$
- Controller Idle Time must be $\geq 20\%$
- DeltaV Operate for RS3 v10.3 is compatible with only Windows XP SP3 and Windows Server® 2003 SP2 operating systems.
- Quad monitors require DeltaV Operate for RS3 v8.4 through v10.3.
- Widescreen monitors with 16:10 aspect ratio require DeltaV v10.3.

To locate a sales office near you, visit our website at: www.EmersonProcess.com/DeltaV

...or call us at:

Asia Pacific:	65.777.8211
Europe, Middle East:	41.41.768.6111
North America, Latin America:	+1 800.833.8314 or +1 512.832.3774

For large power, water, and wastewater applications contact Power and Water Solutions at:

www.EmersonProcess-powerwater.com

...or call us at:

Asia Pacific:	65.777.8211
Europe, Middle East, Africa:	48.22.630.2443
North America, Latin America:	+1 412.963.4000

© Emerson Process Management 1996—2011 All rights reserved.
For Emerson Process Management trademarks and service marks, go to
<http://www.emersonprocess.com/home/news/resources/marks.pdf>

The contents of this publication are presented for informational purposes only, and while every effort has been made to ensure their accuracy, they are not to be construed as warranties or guarantees, express or implied, regarding the products or services described herein or their use or applicability. All sales are governed by our terms and conditions, which are available on request. We reserve the right to modify or improve the design or specification of such products at any time without notice.

