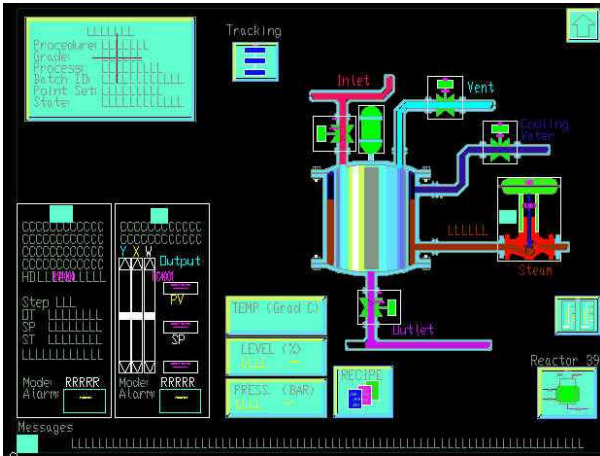
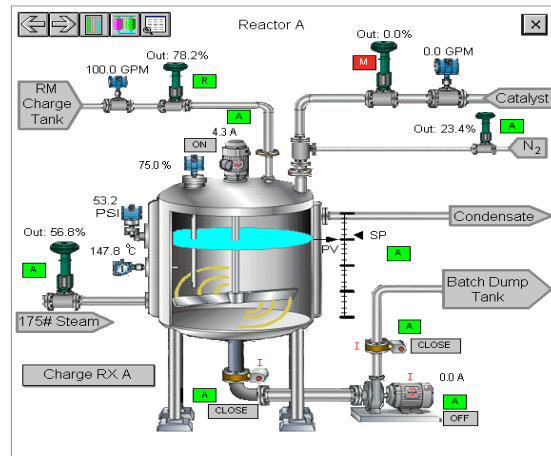




# PROVOX<sup>®</sup> to DeltaV<sup>™</sup> Display Transition Services



PROVOX<sup>®</sup> display (before)



DeltaV<sup>™</sup> display (Design Service—after)

- Transitions PROVOX<sup>®</sup> displays to DeltaV<sup>™</sup> displays
- Improves operator interface—takes full advantage of new display technologies
- Establishes a plant graphics standard and graphics library
- Employs the services of expert engineers experienced with both PROVOX and DeltaV systems
- Reduces the time, effort, and risks associated with manual display builds

## Introduction

Emerson Process Management offers design, comprehensive, and economy services to meet a variety of transition needs.

The display transition **design service** is your best choice when migrating from PROVOX<sup>®</sup> consoles to the DeltaV<sup>™</sup> operator interface. Taking full advantage of new technologies, graphics standards and onboard DeltaV system capabilities, this service delivers the optimal operator interface for your plant.

In the design service, the Emerson Process Management team works with your process and graphics personnel to develop a graphics standard, incorporating the new display technology along with your plant operating procedures and philosophies. Using this new graphics standard and elements from the DeltaV libraries, the team develops your graphics library. Then, they translate your existing PROVOX graphics into DeltaV operator interface graphics.



The display transition **comprehensive service** provides DeltaV displays that are functional equivalents of the original PROVOX displays. Combining the expertise of our engineering staff with the use of an automated conversion utility, the comprehensive service generates DeltaV operator interface displays with 100% of the original PROVOX display functionality. The service greatly reduces the time, effort and risk associated with converting your graphic displays.

The design and comprehensive services produce complete DeltaV displays, ready for checkout and use at the plant. For easy maintenance, they are 100% compatible with DeltaV Operate.

The display transition **economy service** easily and cost-effectively converts PROVOX graphic elements to the DeltaV format. These converted elements constitute a foundation for further DeltaV graphic development.

The **economy service** converts most, but not all, of the graphic elements used in PROVOX graphic displays. You can complete the displays using the DeltaV Operate editor.

## Benefits

**Improved operator interface using DeltaV automation technology.** The transition service takes advantage of the latest in DeltaV operator interface capabilities. Your operators will have a consistent, easy-to-understand, easy-to-use interface to help them run the plant more effectively.

**Makes the most of expertise at Emerson Process Management.** Emerson Process Management is staffed by engineers who know PROVOX and DeltaV systems extremely well and who use that expertise to get the most out of the DeltaV operator interface. They will work with you to create an operator interface that reinforces and supports your plant operating procedures.

**Reduces the time and effort spent on building new displays.** This keeps your people and their capabilities focused on more critical plant priorities.

**Manages the pace of your technology investments** by phasing the upgrades. Immediately deploy new DeltaV operator interface technologies that work with your existing controls, enabling you to plan future automation investments while enjoying the benefits of enhanced capabilities.

## Service Description

Included in all transition services:

- **Expert project management** using certified and proven ISO-9000 methodology.
- **Transition** of PROVOX graphics to DeltaV operator interface graphics.

## Options

To enhance your transition project, consider the following service options:

- **Custom dynamic graphic element design.** For improved ease of maintenance of your DeltaV graphic displays, Emerson Process Management can develop customized 2D and 3D graphic elements and DeltaV dynamic objects to replace grouped objects.
- **Development of a plant graphic standard.** Documents and describes the symbols, guidelines, color schemes, gray scale, and other conventions that the team develops. It serves as a reference to ensure ongoing consistency as you expand and update the system.
- **Development of a plant graphics library.** Use elements from existing DeltaV libraries with your new graphic standard to generate graphic elements that can easily be reused.
- **Site Services.** At any time during the development of the displays, site visits may be advantageous. When the display transitions are completed, the displays should be checked out at the plant. Emerson Process Management, sales/service offices can supply engineers to assist with or lead this effort. All site work is priced on a time and materials basis.



- Operator training.** Emerson Process Management offers comprehensive training for your entire staff, including engineering, safety, maintenance and operations personnel. Emerson’s training formats—eLearning, traditional classroom, onsite and dynamic simulation-based training—apply “hands on and learn-by-doing” approaches to ensure that you achieve your training goals.

Contact your local Emerson Process Management office for more details about these options.

### Summary

By having Emerson Process Management transition your displays, you keep your own staff’s valuable attention focused on site priorities. When migrating from a PROVOX to DeltaV operator interface, the transition service takes full advantage of the new display capabilities and creates a graphic standard and library tailor-made to fit your plant and your operating procedures.

Migration to the DeltaV operator interface reduces the maintenance costs of your current operator interface, while laying a foundation for future technology investments.

### Specifications

PROVOX® to DeltaV™ Display Transition Service Specifications	
Inputs	1. Customer discussions and meetings, as well as existing plant standards and conventions concerning graphic displays.  2. Current PROVOX displays as a foundation for the new DeltaV operator displays.
Output	DeltaV display files on CD-ROM media
Output file format	DeltaV version v7.x and later

### Graphic Element Conversion Specifications—Economy Service

PROVOX® Graphic Elements - Conversion Capability of Economy Transition Service		
Converted	Converted Elements - Comments	Not Converted*
ISA Symbols	Simple conditionals associated with these elements, such as color or visibility changes based on database values, are also converted.	*Complex Conditional Color and Text Expressions
Circle		Application Window (PROVUE)
Arc	In some cases, the converted graphic element may have a slightly different look or feel, but it will provide an equivalent or better functionality.	Overview (PROVUE)
Text		Status Block
Polygon	Seven digit maximum for combined whole number and decimal display for values	Alarm Block
Box		Trend
Line	Assumed to be database points when converted	Faceplate
Bargraph		Grouping
Value		OWS Special Functions
DSR		
DDP		
Fill / NoFill		
Dev Bargraph		
Time & Date		

