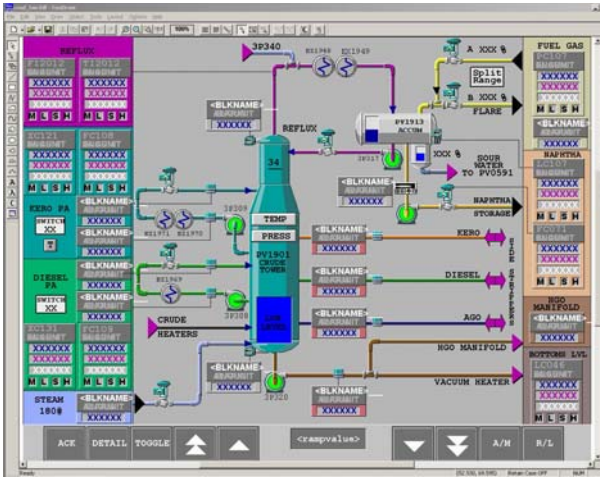
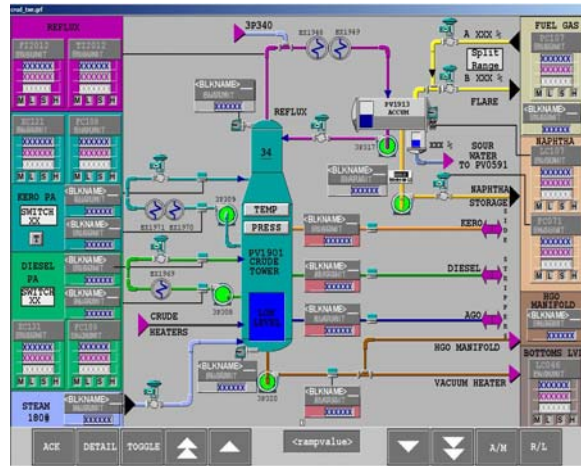




# DeltaV™ Display Transition Services for Foxboro I/A Series® Systems



FoxDraw display before conversion



DeltaV™ display after conversion

- Transitions Foxboro I/A Series® displays to DeltaV™ displays
- Improves the operator interface—takes full advantage of new display technologies
- Establishes a plant graphics standard and graphics library
- Employs the services of expert engineers experienced with both Foxboro and DeltaV systems
- Reduces the time, effort, and risks associated with manual display builds

## Introduction

Emerson Process Management offers Design and Comprehensive-level services to meet a variety of transition needs.

The display transition Design Service best serves your needs when migrating I/A Series controls and operator interface to the DeltaV system. Taking full advantage of new technologies, graphics standards, and DeltaV system capabilities, this service delivers the optimal operator interface for your plant.

In the Design Service, the Emerson Process Management team works with your process and graphics personnel to develop a graphics standard, incorporating the new display technology and your plant operating procedures and philosophies. Using this new graphics standard and elements from the DeltaV libraries, the team develops your graphics library. Then, they create new DeltaV operator interface graphics to replace the existing I/A Series displays.

The display transition Comprehensive Service provides DeltaV displays that are functional equivalents of the original I/A Series displays.



Combining the expertise of our engineering staff with the use of an automated conversion utility, the Comprehensive Service generates DeltaV operator interface displays with 100% of the original I/A Series display functionality. The service greatly reduces the time, effort and risk associated with manual display development.

The Design and Comprehensive services deliver complete DeltaV displays, ready for checkout and use at the plant. They are compatible with DeltaV Operate for easy maintenance.

### Benefits

**Improved operator interface using DeltaV technology.** The transition service takes advantage of the latest in DeltaV operator interface capabilities. Your operators will have a consistent, easy-to-understand and easy-to-use interface, which helps them run the plant more effectively.

**Makes the most of Emerson Expertise.** Emerson engineers with I/A Series and DeltaV systems expertise get the most out of the DeltaV operator interface. They will work with you to create an operator interface that reinforces and supports your plant operating procedures.

**Reduces time and effort spent building new displays.** This keeps your people and their capabilities focused on more critical plant priorities.

**Reduces risks associated with manual display builds.** All display transition services apply Emerson's automated translation technologies to generate the DeltaV operator displays. These technologies reduce or eliminate manual display generation errors, particularly those induced during repetitive tasks. Tool assisted traceability allows engineers to verify that each source display element is translated to an appropriate DeltaV display object.

### Service Description

All transition services include :

- **Expert project management** using certified and proven ISO-9000 methodology.
- **Transition** of Foxboro I/A Series displays to DeltaV operator interface displays.

### Options

To enhance your transition project, consider the following service options:

- **Custom dynamic graphic element design.** Emerson can develop customized 2D and 3D graphic elements and DeltaV dynamic objects to replace grouped objects. Where process changes are anticipated, this option is particularly attractive, as it eases maintenance of your converted DeltaV displays.
- **Development of a plant graphic standard.** This standard catalogs symbols, guidelines, color schemes, gray scale, and other conventions that the team develops. It serves as a reference to ensure ongoing consistency as you expand and update the system.
- **Development of a plant graphics library.** Emerson applies existing DeltaV library elements with your new graphic standard and generates graphic elements that can easily be reused.
- **Easy Substitutions.** Emerson's automated translation technologies facilitate easy dynamo substitutions. Substituting dynamos for grouped objects extends powerful DeltaV functionality to common display item groups, used on multiple displays.



- **Site Services.** At any time during the development of the displays, site visits may be advantageous. Once display transitions are completed, displays should be checked out at the plant. Emerson engineers can assist with or lead this effort. All site work is priced on a time and materials basis.
- **Operator Training.** Emerson offers comprehensive training for your entire staff, including engineering, safety, maintenance and operations personnel. Emerson’s training formats—eLearning, traditional classroom, onsite and dynamic simulation-based training—apply “hands on and learn-by-doing approaches to ensure that you achieve your training goals.

Contact your local Emerson office for more details about these options.

### Summary

By having Emerson Process Management execute your display transitions, your valuable resources can stay focused on plant priorities. Converted graphics are 100% functional displays that mimic the existing system display capability. However, if your situation warrants developing a new graphics standard and creating new displays, Emerson engineers can tailor new DeltaV graphics to fit your plant and comply with operating procedures.

Migration to the DeltaV operator interface reduces the maintenance costs of your current operator interface, while laying a foundation for future technology investments.

### Specifications

Foxboro I/A Series® to DeltaV™ Display Transition Service Specifications	
Inputs	<ul style="list-style-type: none"><li>• Customer discussions and meetings, existing plant standards and conventions relevant to automation system graphic displays.</li><li>• Provide in .g format all display files – this is strongly preferred. However, Display Manager PDF or FoxDraw FDF and m1 files are acceptable. Emerson will convert the files to the .g format in preparation for conversion.</li><li>• Provide in .g or native format all overlays and library objects associated with the set of displays.</li><li>• Provide files via ftp or CD. DAT and streaming tapes cannot be accepted.</li></ul>
Outputs	DeltaV display files on CD-ROM media, compatible with DeltaV v8.4.1 and higher

