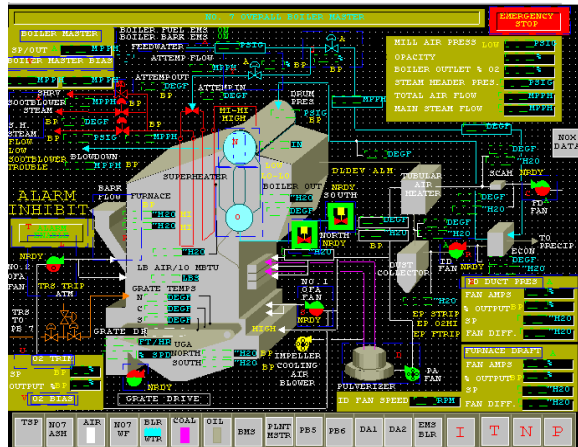
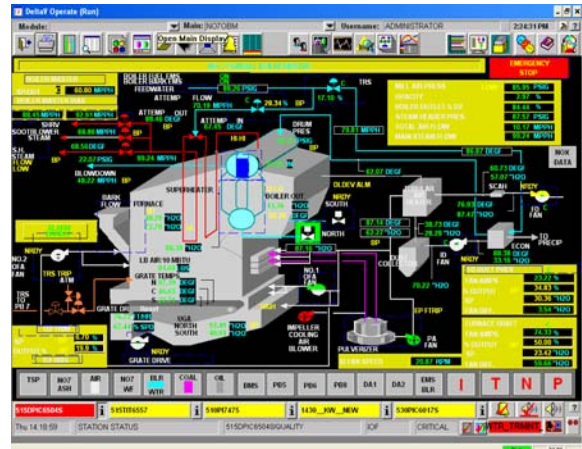




Bailey® to DeltaV™ Display Transition Services



Bailey® Display (before)



DeltaV™ Display (after)

- Transitions Bailey® displays to DeltaV™ displays
- Improves the operator interface—takes full advantage of new display technologies
- Establishes a plant graphics standard and graphics library
- Employs the services of expert engineers experienced with both Bailey and DeltaV systems
- Reduces the time, effort, and risks associated with manual display builds

Introduction

Emerson Process Management offers Design and Comprehensive-level services to meet a variety of transition needs.

The display transition Design Service best serves your needs when migrating the controls as well as the operator interface. Taking full advantage of new technologies, graphics standards, and onboard DeltaV system capabilities, this service delivers the optimal operator interface for your plant.

In the Design Service, the Emerson Process Management team works with your process and graphics personnel to develop a graphics standard, incorporating the new display technology and your plant operating procedures and philosophies. Using this new graphics standard and elements from the DeltaV libraries, the team develops your graphics library. Then, they create new DeltaV operator interface graphics to replace the existing Bailey displays.



The display transition Comprehensive Service provides DeltaV displays that are functional equivalents of the original Bailey displays. Combining the expertise of our engineering staff with the use of an automated conversion utility, the Comprehensive Service generates DeltaV operator interface displays with 100% of the original Bailey display functionality. The service greatly reduces the time, effort and risk associated with manual display development.

The Design and Comprehensive services deliver complete DeltaV displays, ready for checkout and use at the plant. They are compatible with DeltaV Operate for easy maintenance.

Benefits

Improved operator interface using DeltaV technology. The transition service takes advantage of the latest in DeltaV operator interface capabilities. Your operators will have a consistent, easy-to-understand and easy-to-use interface, which helps them run the plant more effectively.

Leverage expertise at Emerson Process Management. Emerson Process Management is staffed by engineers who know the Bailey and DeltaV systems extremely well. They use that expertise to get the most out of the DeltaV operator interface. They will work with you to create an operator interface that reinforces and supports your plant operating procedures.

Reduce the time and effort spent on building new displays. Keep your personnel and their capabilities focused on more critical plant priorities.

Manage the pace of your technology investments by phasing the upgrades. Immediately deploy new DeltaV operator interface technologies that work with your existing controls, enabling you to plan future automation investments while enjoying the benefits of enhanced capabilities.

Service Description

Included in all transition services:

- **Expert project management** using certified and proven ISO-9000 methodology

- **Transition** of OIS, MCS, LAN90/PCV and Conductor VMS graphics to DeltaV operator interface graphics.

Options

To enhance your transition project, the following service options should be considered.

- **Custom dynamic graphic element design.** Emerson Process Management can develop customized 2D and 3D graphic elements and DeltaV dynamic objects to replace grouped objects for improving the ease of maintenance of your converted DeltaV graphic displays.
- **Development of a plant graphic standard.** This standard will document and describe the symbols, guidelines, color schemes, gray scale, and other conventions that the team develops. It serves as a reference to ensure ongoing consistency as you expand and update the system.
- **Development of a plant graphics library.** Use elements from existing DeltaV libraries with your new graphic standard to generate graphic elements that can easily be reused.
- **Site Services.** At any time during the development of the displays, site visits may be advantageous. When the display transitions are completed, the displays should be checked out at the plant. Emerson Process Management sales/services offices can supply engineers to assist with or lead this effort. All site work is priced on a time and materials basis.
- **Operator Training.** Emerson Process Management provides comprehensive training for your entire staff, including engineering, safety, maintenance, and operations personnel. Emerson's training formats—eLearning, traditional classroom, onsite and dynamic simulation-based training—apply hands-on and learn-by-doing approaches to ensure that you achieve your training goals.
- **Bailey Console Tag Conversion.** Emerson Process Management can provide a service to convert Bailey console tag definitions to the



DeltaV Connect Solution for Bailey Systems modules. This service converts 100% of the exception reports that will be used by the DeltaV consoles.

- **Bailey Display (*.dt format) Generation.** Emerson Process Management can generate Bailey display files in *.dt format from your existing *.dr and *.dy files if needed.

Contact your local Emerson Process Management office for more details about these options.

Summary

By having Emerson Process Management execute your display transitions, your valuable resources can keep focused on priorities that best benefit from their skills. Converted graphics are 100% functional displays that mimic the existing system display capability. However, if your situation warrants developing a new graphics standard and creating new displays, Emerson engineers can tailor new DeltaV graphics to fit your plant and comply with operating procedures.

With the migration to the DeltaV system, you will not only reduce ongoing console maintenance costs, but you also gain the advantages of the very latest in operator interface technology.

Specifications

	Transition Service Specifications
Inputs	Bailey graphic display files from OIS, MCS, LAN90/PCV or Conductor VMS, a console tag database, DeltaV Connect Bailey module definitions and completed Bailey display transition questionnaire.
Input file formats	Latest versions of *.dr, *.dy, and *.dt Bailey display files. Console tag database file in DBASE (*.dbf), MS ACCESS (*.mdb) or EXCEL (*.xls) format.
Output	DeltaV displays, templates, user and installation files on CD-ROM media
Output file format	DeltaV v7.x or later

