

# Costly mechanical systems replaced by sonar technology

## RESULTS

- Minimized cleaning and maintenance
- Elimination of obstructions caused by automatic scraper
- Reduced installation costs
- Increased reliability



*The MSL600 follows the real sludge movement without being upset by the passing scraper.*

## APPLICATION

Sludge level indication

## CUSTOMER

Sewage treatment works located in Paris, France

## CHALLENGE

A large Paris sewage treatment works needed a solution for replacing their aging sludge level indication systems. These old systems comprised a Mobrey 433s point level sensor on a home-made automated wind down/wind up mechanical system.

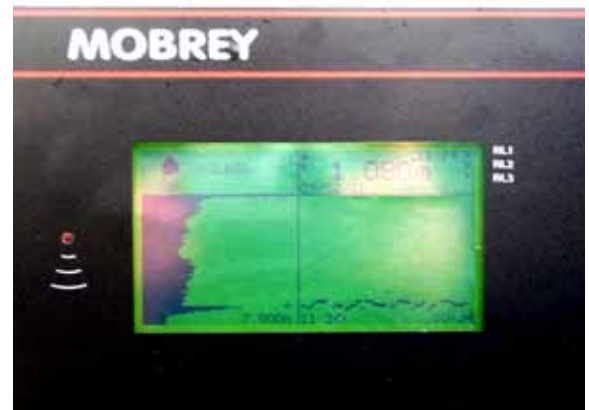
The Mobrey sensors had proved their reliability over nearly 20 years but the mechanical system was very costly because of the need for regular cleaning and maintenance. If the 433 sensor was not raised by the automated winding system before the scraper passed underneath the bridge, the sensor would be tangled up in the underwater scraper and damaged.

The specification for the new system called for static sonar technology with automatic cleaning in order to reduce the cost of ownership and increase reliability on the deep settling tanks.

## SOLUTION

The customer tested all suppliers of the equipment that would meet the specification but found that the MSL600 system not only met the requirements but surpassed them in several key areas including:

**Cleaning:** Some suppliers offered separate air or water cleaning systems which required the installation of air or water supplies. The integral air compressor and tubing of the Mobrey MSL600 system saved large amounts of money on the installation.



*Above: Photograph of the Mobrey MSL600 display showing sludge profile on the left and level recording on the right.*

*Note the "wavy" recorder trace showing the effect of the under water scraper as it sweeps the sludge under the MSL600 sensor.*

*continued overleaf..*

## WATER & WASTEWATER

Maintenance : Wiper cleaning systems on rival sensors needed regular maintenance on site and even required factory returns every year. The MSL600 cleaning system needs negligible maintenance.

User friendliness : Only a few parameters are necessary to set up an MSL600 and the large integral display is very informative.

The Paris sewage treatment plant has now chosen the MSL600 for the replacement of their old sludge level monitors over the next four years.

*“This system gives us peace of mind. We no longer have to worry about sensor cleaning and maintenance”*

Plant Engineer

### **Emerson Process Management Mobrey Measurement Division**

158 Edinburgh Avenue, Slough,  
Berks UK SL1 4UE  
Tel: +44 (0)1753 756600  
Fax: +44 (0)1753 823589  
e-mail: [mobrey.sales@  
EmersonProcess.com](mailto:mobrey.sales@EmersonProcess.com)  
[www.mobrey.com](http://www.mobrey.com)

### **Emerson Process Management**

8200 Market Boulevard  
Chanhassen, MN 55317  
T (U.S.) 1-800-999-9307  
T (International) (952) 906-8888  
F (952) 949-7001  
[www.emersonprocess.com](http://www.emersonprocess.com)

The Emerson logo is a trade mark and service mark of Emerson Electric Co.  
All other marks are the property of their respective owners

We reserve the right to modify or improve the designs or specifications of product and services at any time without notice.

**mobrey**

  
**EMERSON**<sup>™</sup>  
Process Management