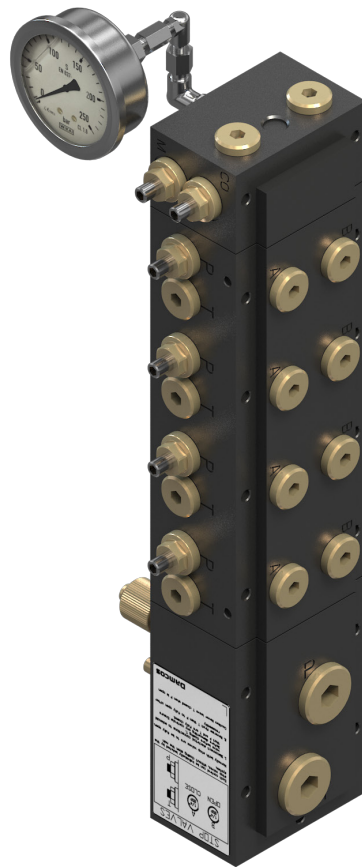


Damcos Cabinet Manifold

Manifold Aluminium System

Straight and Angled



Description

The manifolds are the elements of complete systems in a stacking design. The Cabinet Manifold is available with 4 and 6 Cetop 3 (ISO 4401-03-02) stations in the version MS-3 50 mm.

Very compact hydraulic systems can be built on each station. All stations have common pressure (P) and tank (T) ports and each Cetop 3 control station has separate user ports A and B.

Just beside the A and B user port there are one throttle/stop valves on each station.

The throttle/stop valves on P port are regulating the flow. If some of the stacking elements are to be exchanged, the throttle/stop valves on P port should be closed.

It is then possible to take off each stacking element without losing the hydraulic system pressure. The manifolds are provided with screws and recess for cabinet mounting.

The manifold systems feature:

- Compactness and unique design
- Throttle/stop valves on each station
- System bleed valve on each manifold system
- Hand pump connections for emergency operation
- Unlimited mounting possibilities and free combination of manifolds 4 and 6 stations



Cabinet Manifold with 4 stations straight including top part with pressure gauge and bottom part.

Cover Plate C3



The cover plate is used for blanking off Cetop-3 connections not used on the manifold.

Non-Return Valve

The non-return valve is used in the manifold (T-line) in order to prevent flow in one direction and allow free flow in the other.

When using a hydraulic position indicator VPI, there must always be a non-return valve.

The non-return valve is as standard mounted in all MS-3 manifolds.

Materials

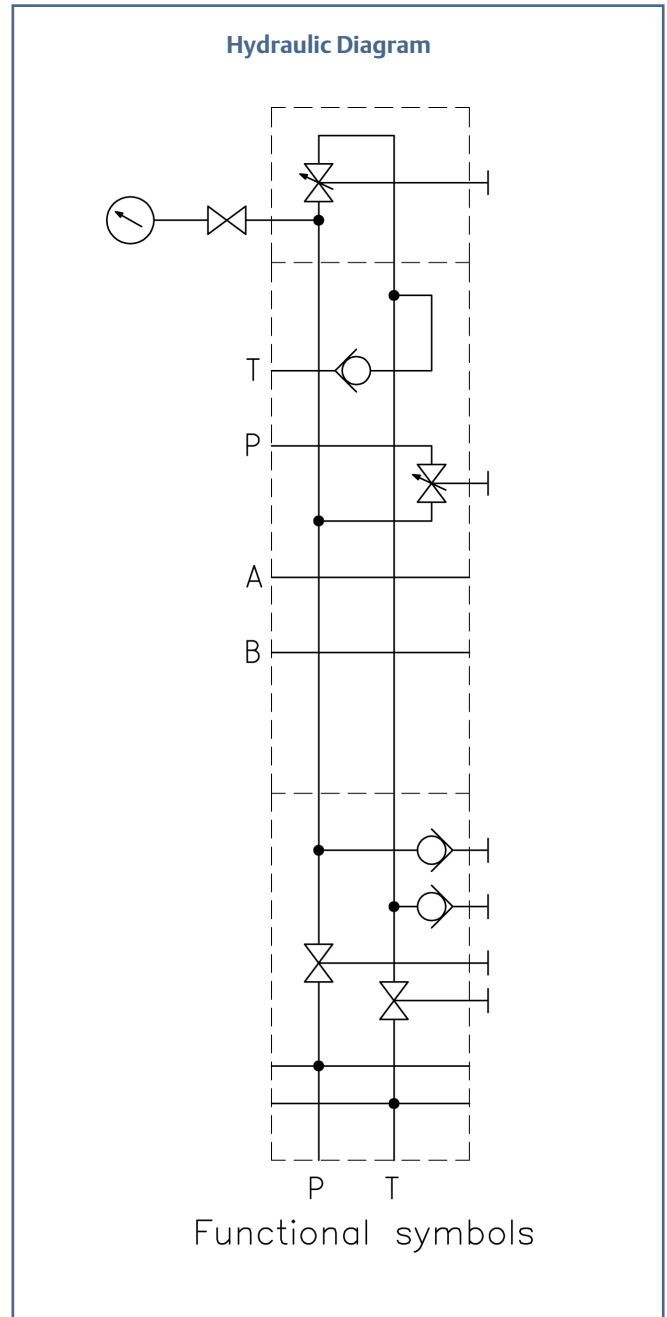
Manifold, bottom part and top part	Aluminium AlMgSi 1.0, anodized
Throttle/Stop valves	MS 58/Sandviken 1802
Hand pump connection	MS 58
Bushes	W. no. 1.0718
O-rings	Perbunan
Pins	9S20K
Screws	DIM 267 Quality 8.8

Technical Data

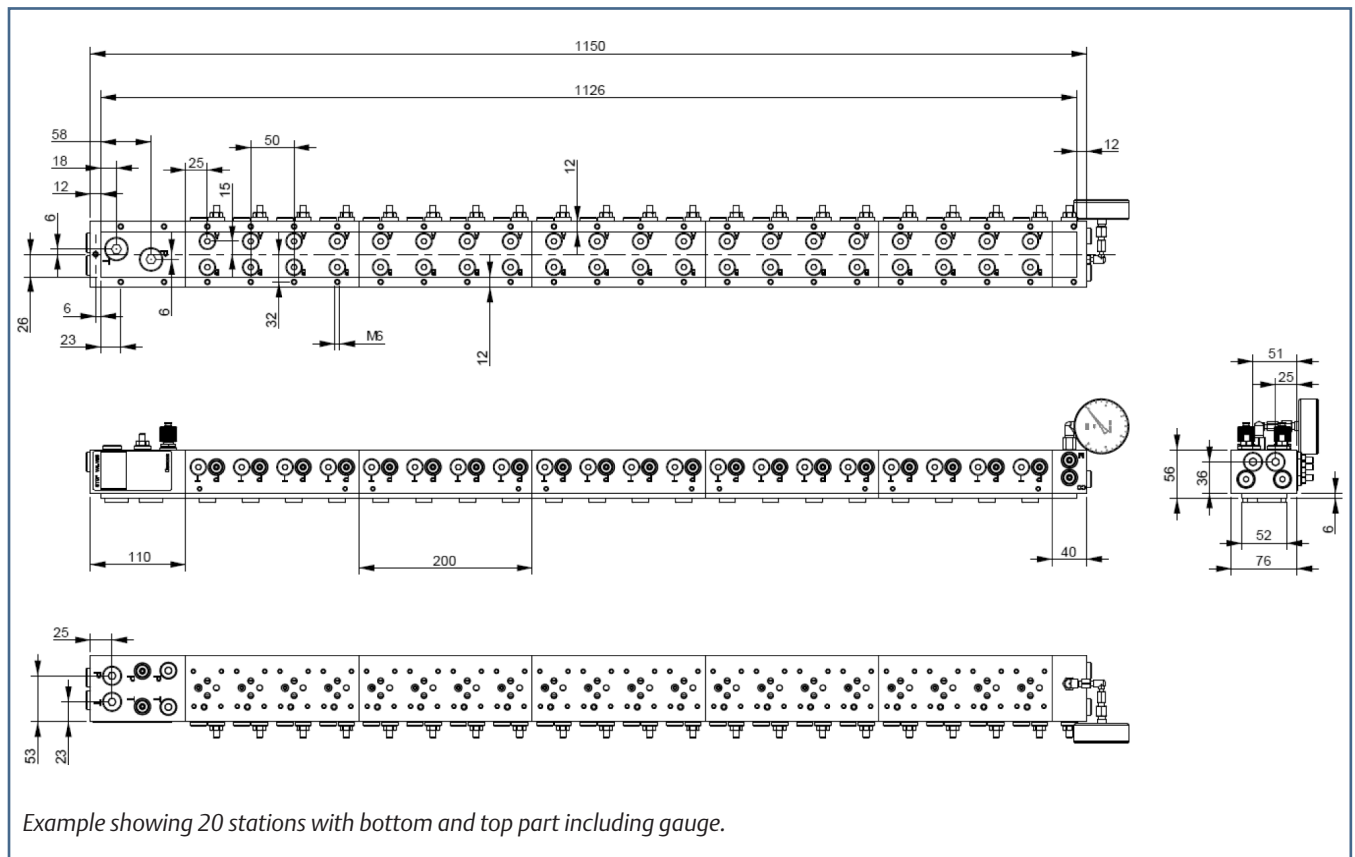
Maximum working pressure	135 bar	
Maximum test pressure	225 bar	
Pipe connection	1/4" BSP	
P & T connection	3/8" BSP	
Weight (kg)	Type	Aluminium
	Manifold 4 stations straight 50 mm	2.3
	Manifold 6 stations straight 50 mm	3.4
	Manifold 4 stations angled 50 mm	2
	Manifold 6 stations angled 50 mm	3
	Bottom part - left	1.5
	Bottom part - right	1.5
	Top part - left with pressure gauge	1
	Top part - left without pressure gauge	0.5
	Top part - right with pressure gauge	1
Top part - right without pressure gauge	0.5	

Pressure Drop

Flow (l/min)	One solenoid valve (bar)	Two solenoid valves (bar)	Four solenoid valves (bar)	Six solenoid valves (bar)
3	7	5.4	4.5	4.4
6	14	7.7	4.9	5
12	42	16.3	6.9	6.5



Building-in Dimensions



©2015 Emerson Process Management. All rights reserved.

The Emerson logo is a trademark and service mark of Emerson Electric Co. Damcos and the Damcos logotype are trademarks of Damcos A/S.

Emerson Process Management

Damcos A/S
Aaderupvej 41
DK-4700 Naestved
T +45 5578 7200
F +45 5578 7272

www.EmersonProcess.com/mtm

The contents of this publication are presented for information purposes only, and while effort has been made to ensure their accuracy, they are not to be construed as warranties or guarantees, expressed or implied, regarding the products or services described herein or their use or applicability. Standard Terms and Conditions of Sale can be issued by contacting Damcos A/S. We reserve the right to modify or improve the designs and specifications of our products at any time without notice. Damcos A/S accepts no responsibility for any errors that may appear in this publication.