



DeltaV v8.4 Batch Operational Enhancements

This whitepaper provides an overview of batch operational enhancements released in DeltaV v8.4 software. It is intended as a guideline for operations personnel and control engineers prior to upgrading to DeltaV v8.4.

© Emerson Process Management. 2007 All rights reserved.

DeltaV, the DeltaV design, SureService, the SureService design, SureNet, the SureNet design, and PlantWeb are marks of one of the Emerson Process Management group of companies. All other marks are property of their respective owners. The contents of this publication are presented for informational purposes only, and while every effort has been made to ensure their accuracy, they are not to be construed as warranties or guarantees, express or implied, regarding the products or services described herein or their use or applicability. All sales are governed by our terms and conditions, which are available on request. We reserve the right to modify or improve the design or specification of such products at any time without notice.





Contents

Contents	2
Introduction	4
ActiveX Controls for DeltaV Operate	4
Force Transition for Recipes	5
Manual Phase Control Dialog	6
Summary	7
Frequently Asked Questions	7



Figures

Figure 1—New BatchListView in DeltaV Operate-----5
Figure 2—Force Transition for Recipes -----6
Figure 3—Example Manual Phase Control Dialog-----6



Introduction

With the release of DeltaV v8.4 software, users with batch processes will find operations easier to access and faster to perform. The enhancements that provide these improved capabilities are:

- ActiveX Controls for DeltaV Operate
- Force transition for recipes
- Manual phase control dialog box

This paper is intended to provide an overview of these enhancements; for detailed information on these topics, please refer to DeltaV v8.4 Release Notes and Books Online.

ActiveX Controls for DeltaV Operate

In addition to the Batch Prompt ActiveX Control that was released in DeltaV v7.2 software, there are three new ActiveX Controls for DeltaV Operate that provide easier access to perform batch related actions. The three new Controls are Batch List, Batch Command Toolbar and Operator Comment.

There is a new display included with DeltaV Operate called BatchListView, seen in Figure 1. This display contains the Batch List and Batch Command Toolbar. However, these Controls can be displayed individually or together on any other process graphic.

The Batch List Control is similar to the Batch List in the Batch Operator Interface (BOI). As seen in Figure 1, this Control lists all active batches for a particular Batch Executive. The user has the option as to which attributes (Batch ID, Description, State, Mode, etc.) of each batch will also be displayed in the Batch List.

The Batch List Control is a view-only Control. Adding batches to the list and controlling the batches are done through the Batch Command Toolbar, seen on the right side of Figure 1. When a user selects to add a batch, a Batch Create dialog will appear in DeltaV Operate for selection of recipe, formula, etc.

Different commands are available in the Command Toolbar, depending on what batch is selected, just as it works in the BOI. The enforcement of comments and/or electronic signatures will be enforced in Operate, just as they are in the BOI.

The default Command Toolbar ActiveX Control has the same buttons as the BOI Toolbar, with an additional two. These buttons are the BEX Status button and the Comment button, for viewing the Batch Executives status and adding a comment to the batch, respectively. Comments can also be added via the new Operator Comment ActiveX Control. The Operator Comment ActiveX Control enables you to add and view comments associated with batches.

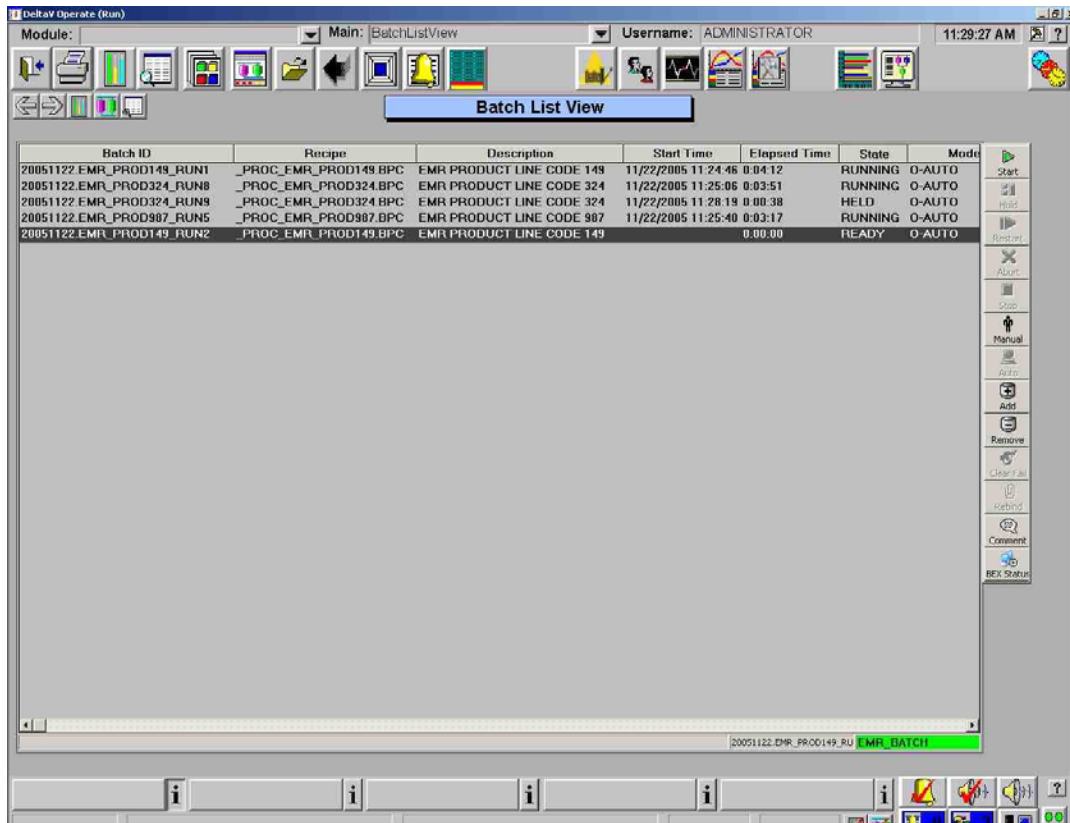


Figure 1—New BatchListView in DeltaV Operate

Force Transition for Recipes

For faster and easier Active Step Changes, a Force Transition capability has been added for recipes in the PFC View of the Batch Operator Interface, as seen in Figure 2. The Force Transition function will automatically perform the steps that had previously been done manually with an Active Step Change. No mode changes or any other Active Step Change moves will have to be made. Force Transition will Stop the step(s) before the transition and Start the step(s) after the transition.

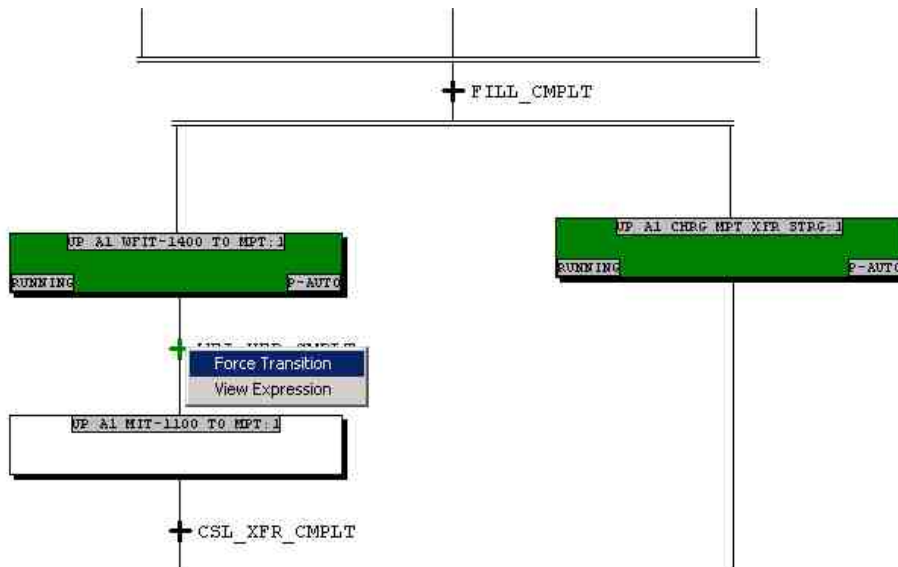


Figure 2—Force Transition for Recipes

The user must have Active Step Change privileges in order to use the Force Transition function.

Manual Phase Control Dialog

In order to quickly start a manual phase through the Batch Operator Interface (BOI), a new dialog has been added to acknowledge and modify all phase parameters. When a user starts a phase through the Manual Phase Control screen in the BOI, the new dialog will appear. Figure 3 shows an example of the new dialog.

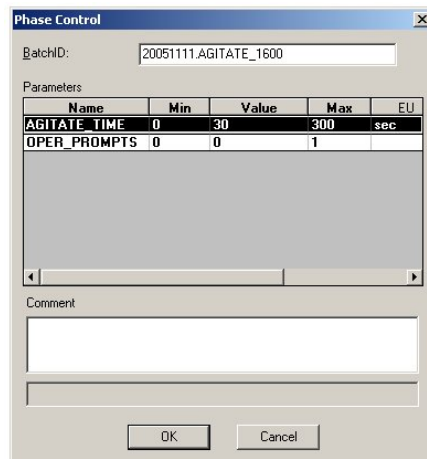


Figure 3—Example Manual Phase Control Dialog

Parameter values that are out of range will not be allowed to be entered. Any out-of-range values will appear in red after the attempt is made to enter them. The dialog also supports confirmation/verification.



Summary

DeltaV v8.4 software provides enhancements to the batch operator in three different areas. The new ActiveX Controls provide operators simplified control with views of their batch and process information in one application. For run-time recipe changes, the Force Transition function provides faster and easier recipe advancement. Finally, manual phase control can be completed more quickly with a new dialog box for phase parameters.

Frequently Asked Questions

How do the ActiveX controls handle multiple batch executives?

If the ActiveX Control is not configured to connect to a specific Batch Executive, the ActiveX Control can either pick up the default Batch Executive from the BOI configuration or the user will be prompted for the Batch Executive upon opening the graphic.

Can you use ActiveX Controls without the Batch Operator Interface (BOI) on the station?

Yes. The ActiveX Controls can be used on any DeltaV Operate graphic, on any Operator Station.

Are the new ActiveX Controls able to leave the Batch Executive assignment blank and read the configuration from the BOI? Like the Prompt ActiveX?

Yes.