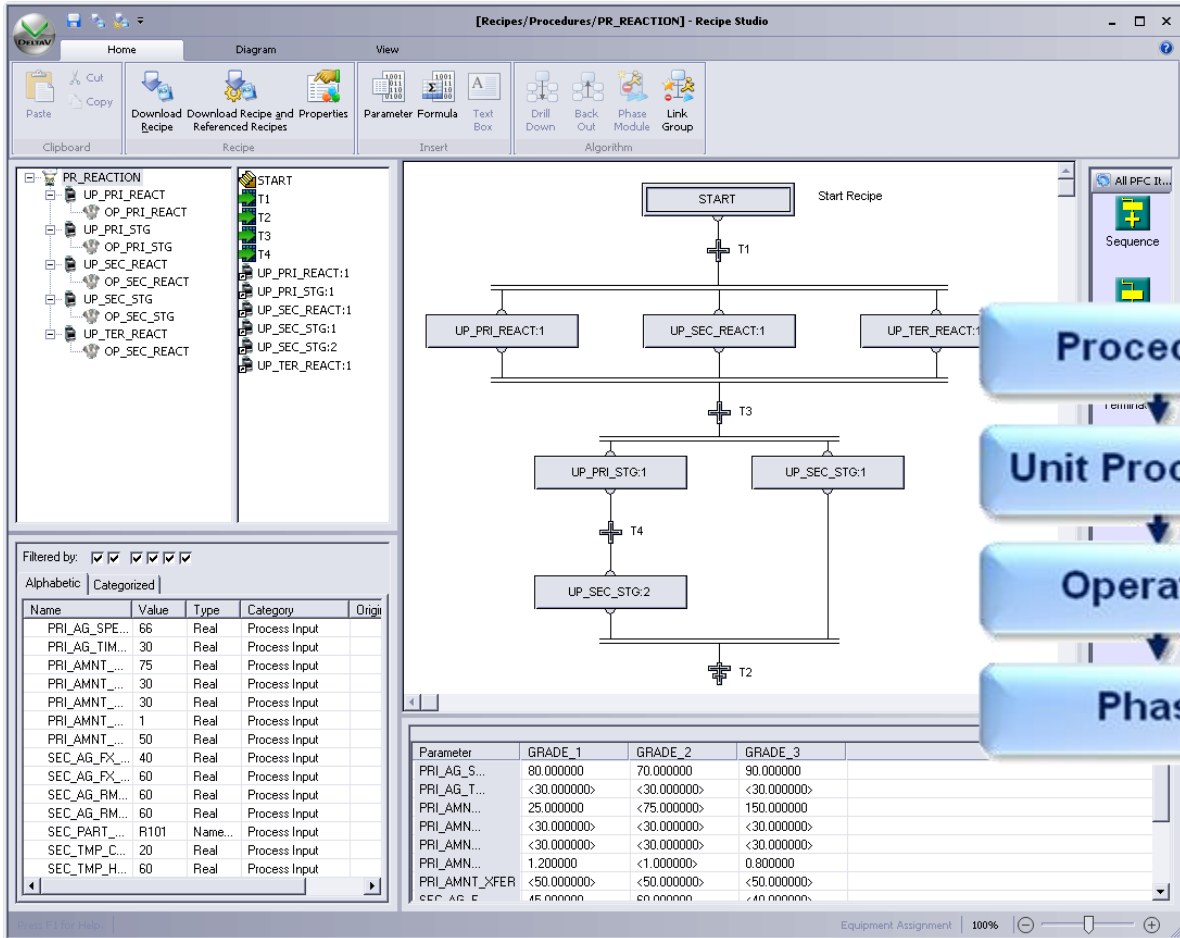


Recipe Studio



Batch configuration using industry standard control language and controls... with Recipe Studio

- Builds your recipes graphically
- S88.01 and IEC 61131-3 Design Foundation
- Single, system-integrated configuration database

Recipe Studio gives you *powerful tools* to create, modify, and troubleshoot your recipes. The graphical configuration tools in the DeltaV system simplify the overall engineering effort and reduce the development and testing time required.

Even users without computer programming expertise can construct batch control strategies quickly and easily *without extensive product training*.

Introduction

Are you ready to *configure your batch your way*? Eliminate complicated configuration applications that limit your batch processing capability. Replace those applications with a single system designed to easily configure your recipes.



Benefits

Build your recipes graphically. Recipe Studio allows you to create and maintain flexible and reusable recipes. Developing your recipes is a quick and easy task, you *point and click* on the tools to build the recipe in a graphical display.

S88.01 and IEC 61131-3 Design Foundation.

DeltaV batch is built on *current industry standards*. Procedural control models, as well as terminology used throughout the system are based on the *ISA S88.01* batch manufacturing standard. Procedures, unit procedures, and operations are constructed graphically using *IEC 61131-3* compliant Sequential Function Charts (SFCs).

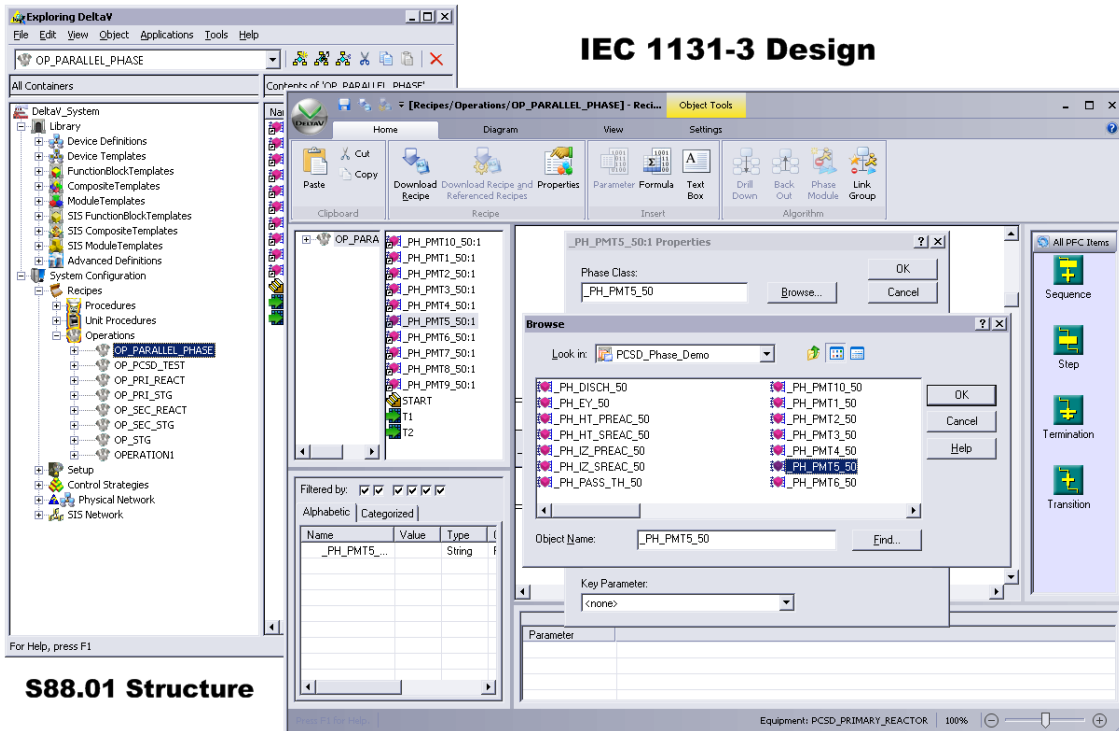
Single integrated configuration database. A *single, object-oriented* database eliminates the need for managing and synchronizing configuration data across multiple configuration databases.

Product Description

In Recipe Studio, you define recipe configurations (procedures, unit procedures, and operations) in an offline environment. The DeltaV *built-for-batch* architecture provides an integrated batch engineering environment. Procedural elements are configured with similar tools and techniques used to construct basic level process control strategies. Drag-and-drop, point-and-click, and simple browsing tools help you easily maneuver in the recipe application. Hierarchical and object attribute views offer additional information to the user and bring more power to the engineer while making configuration easier.

Recipe Studio is an object-oriented technology. All items in an SFC are *context-sensitive*. Link a step within a unit procedure to an operation with a simple right-click of the mouse. Object help, properties, and other editing tools are also accessible here. Recipe Studio allows a user to design an unlimited number of procedures, unit procedures, and operations.

Whether running on a ProfessionalPLUS Station, Professional Station, Operator Station or Base Station, Recipe Studio accesses the single configuration database used by the entire DeltaV system. With this client-server architecture, multiple Recipe Studio applications may be opened simultaneously in a single system.



Open, edit, drag and drop, browse, and integrate all your recipe elements.

Ordering Information

Description	Model Number
Recipe Studio	VE2164

* *Recipe Studio is included in the ProfessionalPLUS Station and Professional Station Software Suite(s). However, to execute recipes created with Recipe Studio, the following prerequisites are needed:*

Related Products

- **Advanced Unit Management Software.** Provides class-based Unit Modules and aliasing to make developing unit-relative equipment strategies simple.
- **Batch Executive.** The batch engine which coordinates all batch processing activity, creates detailed batch history records and schedules recipes and resources.
- **Configuration Audit Trail.** A powerful tool that tracks changes and manages revision information for any item in the DeltaV configuration database, including Safety Instrumented System (SIS) items.
- **Configuration Software Suite.** Makes it easy to create Control Strategies and System Graphics to get your plant up and running quickly and efficiently.
- **DeltaV Operate.** High performance operator graphics, trends and alarms offered in standard operating layouts and utilizing system-wide built-in security.
- **DeltaV Operate for Batch.** Batch Controls allow you to operate your batches from the same DeltaV Operate environment used to monitor and control your process.
- **Monitor and Control Software.** Provides a single user interface with industry standard control languages and functions for graphical control strategy development, testing, and deployment.
- **Recipe Exchange.** Provides an open, programmatic interface to the DeltaV recipe management system. Recipe Exchange is based on an XML schema that provides the ability to programmatically import and export DeltaV recipes. A Service-Oriented Architecture Web Service is also available for Recipe Exchange.
- **Syncade™ Smart Operations Management Suite.** A new class of real-time production management software, provides an easy, flexible, integrated solution that increases plant performance by efficiently managing plant materials and equipment, coordinating production operations, improving quality operations and integrating plant information.

Prerequisites

- DeltaV M-Series or S-Series controller(s) with Advanced Unit Management software license. Refer to the Advanced Unit Management product data sheet for details.
- DeltaV Batch Executive. Refer to the Batch Executive product data sheet for details.

To locate a sales office near you, visit our website at:

www.EmersonProcess.com/DeltaV

Or call us at:

Asia Pacific: 65.777.8211

Europe, Middle East: 41.41.768.6111

North America, Latin America: +1 800.833.8314 or
+1 512.832.3774

For large power, water, and wastewater applications

contact Power and Water Solutions at:

www.EmersonProcess-powerwater.com

Or call us at:

Asia Pacific: 65.777.8211

Europe, Middle East, Africa: 48.22.630.2443

North America, Latin America: +1 412.963.4000

© Emerson Process Management 2009. All rights reserved. For Emerson Process Management trademarks and service marks, go to: <http://www.emersonprocess.com/home/news/resources/marks.pdf>.

The contents of this publication are presented for informational purposes only, and while every effort has been made to ensure their accuracy, they are not to be construed as warranties or guarantees, express or implied, regarding the products or services described herein or their use or applicability. All sales are governed by our terms and conditions, which are available on request. We reserve the right to modify or improve the design or specification of such products at any time without notice.



DELTA V

www.EmersonProcess.com/DeltaV



EMERSON
Process Management