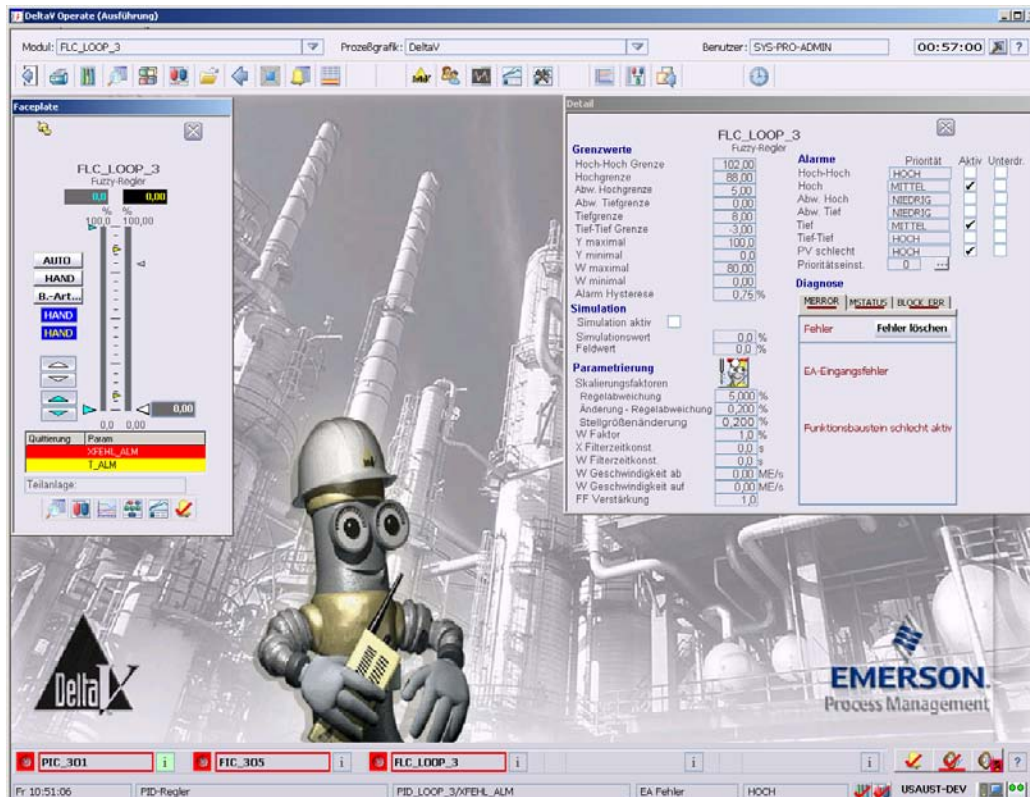


DeltaV 10.3 with AMS Device Manager 10.5 - German



The DeltaV system makes automation easy using German operator and diagnostic applications.

- Operate, diagnose and tune your DeltaV system in German
- Configure and troubleshoot HART and FOUNDATION fieldbus devices with AMS Device Manager v10.5
- Runs on Microsoft Windows XP and Windows Vista Multilingual User Interface (MUI) Pack in German

Introduction

Is English a foreign language to your operators? Are you tired of having to use English keyboards and operating systems for your Operator Stations?

The v10.3 DeltaV system software offers *operator and diagnostic applications in German*. View DeltaV Operate graphics, faceplates, alarm summaries, active batches and detail displays in German.

Trends, alarms and events are recorded and viewed in German. The German regional settings for date and number formats are also supported.

AMS Device Manager provides integrated device configuration and troubleshooting, along with access to Alert Monitor, Audit Trail, and SNAP-ON applications.

A migration utility upgrades the DeltaV 8.4 German to DeltaV 10.3 German and AMSinside to AMS Device Manager v10.5.



Benefits

Operate, diagnose and tune your DeltaV system in German. Log on to the DeltaV system in German. State-of-the-art graphics, trends, process and device alarms, and batch and campaign operation are all in German, making the operator's experience completely natural. And the unique DeltaV **Flexlock** feature securely locks the operator into the system. This ensures system integrity.

All of the words typically seen by operators are in German. This includes tags and descriptors, alarm messages, operational commands such as **Open**, **Abort**, **Stop**, etc. Any menus in the localized applications are also in German.

Troubleshoot your DeltaV system, tune your control loops with DeltaV Tune and view the online conditions of your fieldbus devices in German.

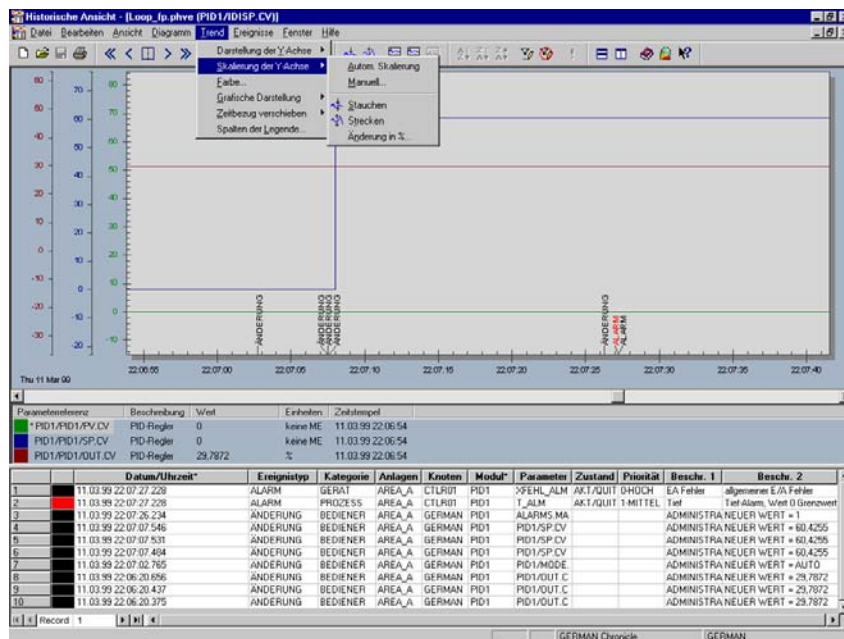
Configure and troubleshoot HART and FOUNDATION fieldbus devices with AMS Device Manager v10.5. Use AMS Device Manager, including Alert Monitor and Audit Trail in German to manage your intelligent devices.

SNAP-ON applications and individual device DD screens appear in English. Device screens depend on whether the device manufacturer has translated their DDs.

Runs on Microsoft Windows XP and Windows Vista with Multilingual User Interface (MUI) Pack in German. DeltaV v10.3 and AMS Device Manager v10.5 run on Microsoft Multi-lingual User Interface (MUI) software in German with either Windows XP and Server 2003 or Microsoft Windows Vista and Server 2008. Workstations and servers are provided with English versions of Operating Systems and MUI software.

The MUI software is used to convert the operating system into German. The Windows XP MUI Pack provides most of the operating system user interface — including the Start and Programs menus, alerts and dialog boxes, along with Help — in German.

Since the underlying operating system is in English, any needed operating system updates are offered concurrently for all DeltaV systems, regardless of localization.

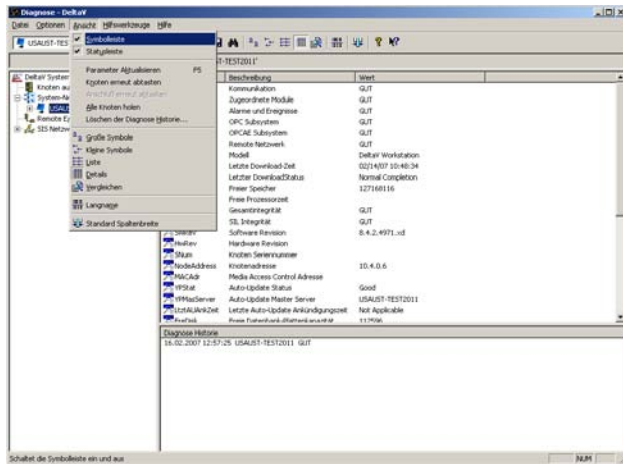


View historical trend and event information in German.



Localized User Applications

The following DeltaV applications are offered in German. Refer to the specific product data sheet for more information:



Diagnose your system in German.

- ✓ **AMS Device Manager**
Configure and diagnose your HART and FOUNDATION fieldbus devices. Includes translated Audit Trail and access to English SNAP-ON applications.
- ✓ **Batch Historian**
Store and retrieve recipe and event data. Historian administration localized.
- ✓ **DeltaV Operate for Batch.**
Batch Controls allow you to operate your batches from the same DeltaV Operate environment used to monitor and control your process.
- ✓ **Campaign Manager.** Create and edit batch campaigns.
- ✓ **DeltaV Continuous Historian**
Stores and retrieves large numbers of process measurements quickly and efficiently.
- ✓ **DeltaV Event Chronicle**
Store and retrieve operator changes, alarms, and changes in device status.

- ✓ **DeltaV Insight**
An advanced process monitoring system that instantly identifies under-performing loops and is used for fuzzy and PID auto-loop tuning.
- ✓ **DeltaV Operate**
Includes high-resolution graphics, trends and alarms prioritized by user, standard operating desktop, and system-wide built-in security.
- ✓ **DeltaV History View**
Provides the unique capability to integrate related batch, continuous and event data.
- ✓ **Diagnostics Explorer**
Provides system-wide (PAS and SIS), device-deep diagnostics.
- ✓ **MPC Operate**
View and modify on-line your model predictive control strategies.

DeltaV Hardware and Control Applications

The following works with DeltaV v10.3 German. DeltaV I/O products are not listed below because the hardware is not impacted by localization:

- ✓ **Advanced Unit Management Software**
Class-based Unit, Equipment, Control modules and Unit Phases.
- ✓ **Batch Executive**
Coordinates all activities during batch operation.
- ✓ **DeltaV Control Network Hardware**
A dedicated Ethernet network connecting DeltaV workstations and the controllers.
- ✓ **DeltaV Dual Monitor Workstation**
Two screens for monitoring your operations.
- ✓ **DeltaV Four-Monitor Workstation**
Four screens for monitoring your operations.
- ✓ **DeltaV Fuzzy**
Run advanced fuzzy logic algorithms in your controller.



DeltaV Hardware and Control Applications (continued)

- ✓ **DeltaV MD and MD Plus Controllers**
DeltaV Controllers provide communication and control.
- ✓ **DeltaV Operator Keyboard**
Flexible, custom, dedicated operator touch screen keyboard for DeltaV workstations.
- ✓ **DeltaV Remote Access Service**
Service to locate Operator and Professional Workstations on your plant LAN.
- ✓ **DeltaV Remote Client**
Remotely connect to your DeltaV system using thin-client technology.
- ✓ **DeltaV SIS Function Blocks**
Function blocks provide an easy configuration for SIS applications.
- ✓ **DeltaV SIS Logic Solver**
DeltaV logic solver provides SIS communications and control.
- ✓ **DeltaV Zones**
Integrated operation and alarming for multiple DeltaV systems.
- ✓ **Monitor and Control Software**
Common monitoring and control functions.
- ✓ **Workstation Hardware**
DeltaV selection of workstations. Select the option for non-English languages (includes the Microsoft MUI Pack).

English DeltaV User Applications

The following applications work with DeltaV v10.3 German. Any user interface component is in English, except as listed above:

- ✓ **Syncade External Phase Server**
Coordinate multiple Syncade external phases on a unit.
- ✓ **Configuration Audit Trail**
Maintain full version control of your configuration.
- ✓ **Configuration Software Suite**
Configure your entire DeltaV system.
- ✓ **Control Studio Online**
View and debug control strategies on-line.
- ✓ **DeltaV Excel Add-in**
Access real-time information from the DeltaV system into Excel.
- ✓ **DeltaV Neural**
Easy-to-use tools for developing and training the neural network model.
- ✓ **DeltaV OPC Event Server**
Transfer alarm and event information to and from the DeltaV system.
- ✓ **DeltaV OPC History Server**
Transfer history information to and from the DeltaV system.
- ✓ **DeltaV Predict and Predict Pro**
Offers greater throughput to maintain plant operation at measurable operating constraints.
- ✓ **DeltaV Simulate**
PlantWeb development environment including simulation on a single PC.
- ✓ **History Analysis**
Provides Web-based viewing and analysis of DeltaV batch, continuous, alarm and event data.
- ✓ **OPC Mirror**
Transfers values between your DeltaV system and other OPC-compliant systems.



- ✓ **OPC Pager**
Keeps a 24-hour eye on your critical values and notifies you when they meet your alert criteria.
- ✓ **Recipe Exchange**
Open interface for the import/export of DeltaV recipes.
- ✓ **Recipe Studio.**
Creates, modifies, and troubleshoots recipes quickly and easily.

Unsupported DeltaV Applications

The following *do not work* with DeltaV v10.3 German:

- ✓ **DeltaV Analyze**
Web page view of alarms and events from the Event Chronicle or Plant Wide Event Historian.
- ✓ **DeltaV Connect**
DeltaV workstations connect to your Bailey, Honeywell or APACS systems.
- ✓ **DeltaV Operate for PROVOX**
PROVOX controllers and I/O in place and controlled by a DeltaV Operator Station.
- ✓ **DeltaV Operate for RS3**
RS3 controllers and I/O in place and controlled by a DeltaV Operator Station.
- ✓ **DeltaV Plantwide Event Historian**
Central storage and view of alarms and events from different systems.
- ✓ **DeltaV Web Server**
View your modified operator displays in web pages.
- ✓ **Excel Report Manager**
Report application by SyTech.
- ✓ **Fault Tolerant Server**
High availability workstations.

- ✓ **MiMiC**
Process simulation software package.
- ✓ **PlantWeb Messenger**
Exchange data between DeltaV and business systems.
- ✓ **PROVOX Applications Server**
DeltaV integration (PAS) platform for PROVOX.
- ✓ **Recipe Manager XP for PROVOX**
Product for simplifying and managing batch recipes.
- ✓ **RMV9000 to DeltaV Interface**
DeltaV serial interface to the MVCU3.

Supported 3rd Party Applications

The following *work* with DeltaV v10.3 German.

- ✓ **INtools**
Import DeltaV configuration from INtools.
- ✓ **OSIsoft PI Enterprise Server.** The PI Enterprise Server is an enterprise-wide real-time information infrastructure that integrates production information with enterprise business systems.
- ✓ **Sytech XLReporter.**
Easily create reports with real-time or historical data from the DeltaV.
- ✓ **Symantec Virus Scanner**
DeltaV workstations connect to your Bailey systems.

