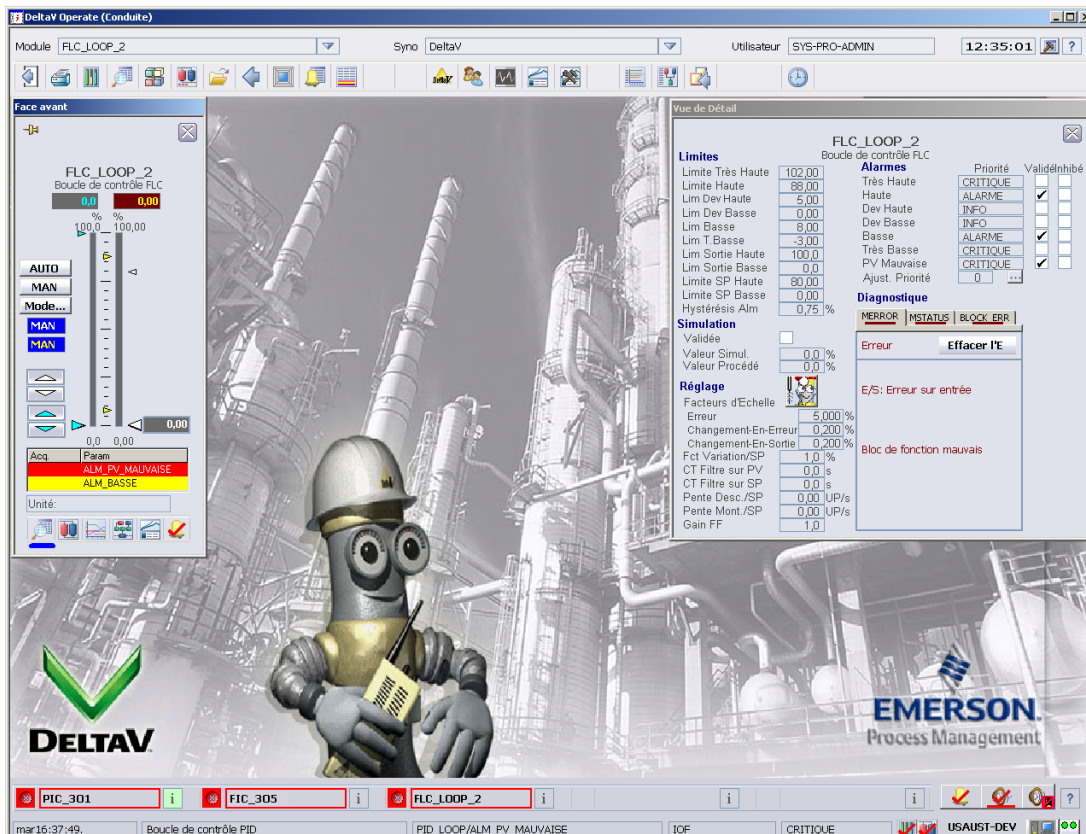


DeltaV™ 11.3 French



The DeltaV system makes automation easy using French operator and diagnostic applications.

- Operate, diagnose and tune your DeltaV™ system in French
- Configure and troubleshoot HART and FOUNDATION fieldbus devices with AMS Device Manager v11.1
- Runs on Microsoft Windows 7 Professional and Windows Server 2008 with Multilingual User Interface (MUI) Pack in French

Introduction

Is English a foreign language to your operators? Are you tired of having to use English keyboards and operating systems for your Operator Stations?

The v11.3 DeltaV system software offers operator and diagnostic applications in French. View DeltaV Operate graphics, faceplates, alarm summaries, active batches and detail displays in French. Trends, alarms and events are recorded and viewed in French. The French regional settings for date and number formats are also supported.

AMS Device Manager provides integrated device configuration and troubleshooting, along with access to Alert Monitor, Audit Trail, and SNAP-ON applications.

A migration utility upgrades the DeltaV 10.3. French to DeltaV 11.3 French and AMSinside to AMS Device Manager v11.1.



Benefits

Operate, diagnose and tune your system in French. Log on to the DeltaV system in French. State-of-the-art graphics, trends, process and device alarms, and batch and campaign operation are all in French, making the operators experience completely natural. And the unique DeltaV Flexlock feature securely locks the operator into the system. This ensures system integrity.

All of the words typically seen by operators are in French. This includes tags and descriptors, alarm messages, operational commands such as open, abort, stop, etc. Any menus in the localized applications are also in French.

Troubleshoot your DeltaV system, tune your control loops with DeltaV Tune and view the on-line conditions of your fieldbus devices.

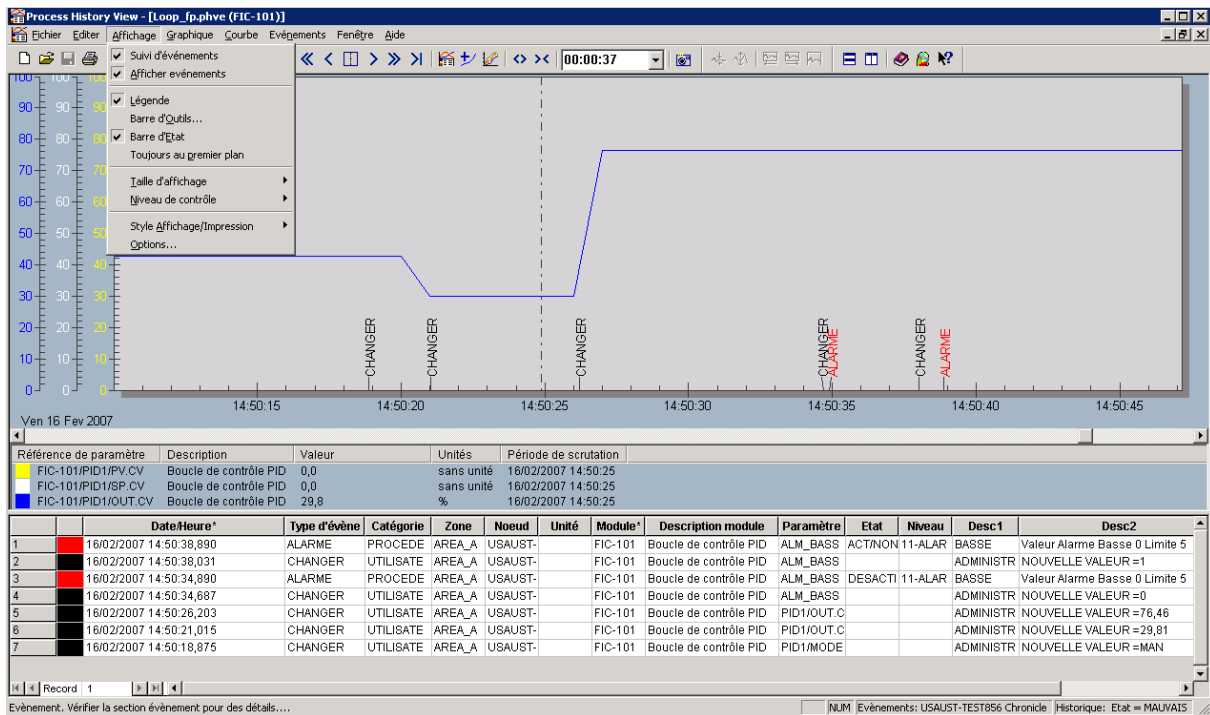
Configure and troubleshoot HART and FOUNDATION fieldbus devices with AMS Device Manager v11.1. Use AMS Device Manager, including Alert Monitor and Audit Trail in French to manage your intelligent devices.

SNAP-ON applications and individual device DD screens appear in English. Device screens depend on whether the device manufacturer has translated their DDs.

Runs on Microsoft Windows 7 Professional and Windows Server 2008. with Multilingual User Interface (MUI) Pack in French. DeltaV v11.3 and AMS Device Manager v11.1 run on Microsoft Multi-lingual User Interface (MUI) software in French with either Windows 7 Professional and Windows Server 2008. Workstations and servers are provided with English versions of Operating Systems and MUI software.

The MUI software is used to convert the operating system into French. The Windows MUI Pack provides most of the operating system user interface — including the Start and Programs menus, alerts and dialog boxes, along with Help — in French.

Since the underlying operating system is in English, any needed operating system updates are offered concurrently for all DeltaV systems, regardless of localization.

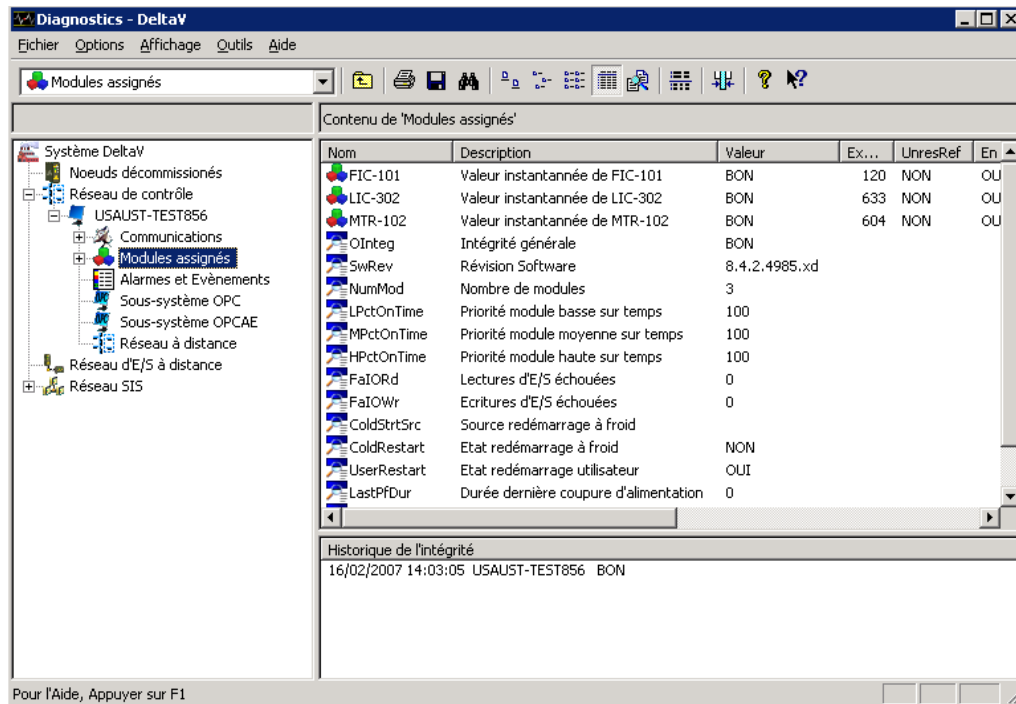


View historical trend and event information in French.

Localized DeltaV User Applications

The following DeltaV applications are offered in French. Refer to the specific product data sheet for more information.

- **AMS Device Manager**
Configure and diagnose your HART and FOUNDATION fieldbus devices. Includes Audit Trail and SNAP-ON applications.
- **Batch Historian**
Store and retrieve recipe and event data. Historian administration localized.
- **DeltaV Operate for Batch.**
Batch Controls allow you to operate your batches from the same DeltaV Operate environment used to monitor and control your process.
- **Campaign Manager**
Create and edit batch campaigns.
- **DeltaV Continuous Historian**
Stores and retrieves large numbers of process measurements quickly and efficiently.
- **DeltaV Event Chronicle**
Store and retrieve operator changes, alarms, and changes in device status.
- **DeltaV InSight**
An advanced process monitoring system that instantly identifies under-performing loops and is used for fuzzy and PID auto-loop tuning.
- **DeltaV Operate**
Includes high-resolution graphics, trends and alarms prioritized by user, standard operating desktop, and system-wide built-in security.
- **DeltaV History View**
Provides the unique capability to integrate related batch, continuous and event data.
- **Diagnostics Explorer**
Provides system-wide (PAS and SIS), device-deep diagnostics.
- **MPC Operate**
View and modify on-line your model predictive control strategies.



Diagnose your system in French.

DeltaV Hardware and Control Applications

The following works with DeltaV v11.3 French. DeltaV I/O products are not listed below because the hardware is not impacted by localization:

- **Advanced Unit Management Software**
Class-based Unit, Equipment, Control modules and Unit Phases.
- **Batch Executive**
Coordinates all activities during batch operation.
- **DeltaV Control Network Hardware**
A dedicated Ethernet network connecting DeltaV workstations and the controllers.
- **DeltaV Dual Monitor Workstation**
Two screens for monitoring your operations.
- **DeltaV Four Monitor Workstation**
Four screens for monitoring your operations.
- **DeltaV Fuzzy**
Run advanced fuzzy logic algorithms in your controller.
- **DeltaV v11.3 Supported Controllers**
DeltaV Controllers provide communication and control.
- **DeltaV Operator Keyboard**
Flexible, custom, dedicated operator touch screen keyboard for DeltaV workstations.
- **DeltaV Remote Access Service**
Service to locate Operator and Professional Workstations on your plant LAN.
- **DeltaV Remote Client**
Remotely connect to your DeltaV system using thin-client technology.
- **DeltaV SIS Function Blocks**
Function blocks provide an easy configuration for SIS applications.
- **DeltaV SIS Logic Solver**
DeltaV logic solver provides SIS communications and control.
- **DeltaV Zones**
Integrated operation and alarming for multiple DeltaV systems.

- **Monitor and Control Software**
Common monitoring and control functions.
- **Workstation Hardware**
DeltaV selection of workstations. Select the option for non-English languages (includes the Microsoft MUI Pack).

English User Applications

The following applications and hardware work with DeltaV v11.3 French. Any user interface component is in English, except as is listed above:

- **Syncade External Phase Server**
Coordinate multiple Syncade external phases on a unit.
- **Configuration Audit Trail**
Maintain full version control of your configuration.
- **Configuration Software Suite**
Configure your entire DeltaV system.
- **Control Studio Online**
View and debug control strategies on-line.
- **DeltaV Excel Add-in**
Access real-time information from the DeltaV system into Excel.
- **DeltaV Neural**
Easy-to-use tools for developing and training the neural network model.
- **DeltaV OPC Event Server**
Transfer alarm and event information to and from the DeltaV system.
- **DeltaV OPC History Server**
Transfer history information to and from the DeltaV system.
- **DeltaV Predict and Predict Pro**
Offers greater throughput to maintain plant operation at measurable operating constraints.
- **DeltaV Simulate**
PlantWeb development environment including simulation on a single PC.
- **History Analysis**
Provides Web-based viewing and analysis of DeltaV batch, continuous, alarm and event data.

- **OPC Mirror**
Transfer values between your DeltaV system and other OPC-compliant systems.
- **OPC Pager**
Keeps a 24-hour eye on your critical values and notifies you when they meet your alert criteria.
- **Recipe Exchange**
Open interface for the import/export of DeltaV recipes.
- **Recipe Studio.**
Creates, modifies, and troubleshoots recipes quickly and easily.

Unsupported DeltaV Applications

The following *do not work* with DeltaV v11.3 French.

- **DeltaV Analyze**
Web page view of alarms and events from the Event Chronicle or Plant Wide Event Historian.
- **DeltaV Connect**
DeltaV workstations connect to your Bailey, Honeywell or APACS systems.
- **DeltaV Operate for PROVOX**
PROVOX controllers and I/O in place and controlled by a DeltaV Operator Station.
- **DeltaV Operate for RS3**
RS3 controllers and I/O in place and controlled by a DeltaV Operator Station.
- **DeltaV Plantwide Event Historian**
Central storage and view of alarms and events from different systems.

- **DeltaV Web Server**
View your modified operator displays in web pages.
- **Excel Report Manager**
Report application by SyTech.
- **Fault Tolerant Server**
High availability workstations.
- **MiMiC**
Process simulation software package.
- **PlantWeb Messenger**
Exchange data between DeltaV and business systems.
- **PROVOX Applications Server**
DeltaV integration (PAS) platform for PROVOX.

Supported 3rd Party Applications

The following *work* with DeltaV v11.3 French.

- **INtools**
Import DeltaV configuration from INtools.
 - **OSIsoft PI Enterprise Server**
The PI Enterprise Server is an enterprise-wide real-time information infrastructure that integrates production information with enterprise business systems.
 - **Sytech XLReporter**
Easily create reports with real-time or historical data from the DeltaV.
- Symantec Virus Scanner**
Anti-virus software to protect DeltaV workstations and servers.

Ordering Information

Model Number	Description
VE2301R113L42	DeltaV v11.3 Software Media Pack, in French. DeltaV operator, maintenance and configuration applications (as listed in PDS) provided in French. Includes AMS Device Manager v11.1 French installation media. All other applications in English.
VE9921R113L42	DeltaV Simulate StandAlone with DeltaV v11.3 Software Media Pack, in French.
VE9922R113L42	DeltaV Simulate Professional StandAlone with DeltaV v11.3 Software Media Pack, in French.
VE9923R113L42	DeltaV Simulate StandAlone with Basic SIS Simulation and DeltaV v11.3 Software Media Pack, in French.
VX2101R113L42	DeltaV Simulate PPN; Multi-Node; includes DeltaV v11.3 Software Media Pack, in French.

Example of complete model order number: VE2301R113L42

To locate a sales office near you, visit our website at:

www.EmersonProcess.com/DeltaV

Or call us at:

Asia Pacific: 65.777.8211

Europe, Middle East: 41.41.768.6111

North America, Latin America: +1 800.833.8314 or
+1 512.832.3774

For large power, water, and wastewater applications

contact Power and Water Solutions at:

www.EmersonProcess-powerwater.com

Or call us at:

Asia Pacific: 65.777.8211

Europe, Middle East, Africa: 48.22.630.2443

North America, Latin America: +1 412.963.4000

© Emerson Process Management 2011. All rights reserved. For Emerson Process Management trademarks and service marks, go to: <http://www.emersonprocess.com/home/news/resources/marks.pdf>.

The contents of this publication are presented for informational purposes only, and while every effort has been made to ensure their accuracy, they are not to be construed as warranties or guarantees, express or implied, regarding the products or services described herein or their use or applicability. All sales are governed by our terms and conditions, which are available on request. We reserve the right to modify or improve the design or specification of such products at any time without notice.

