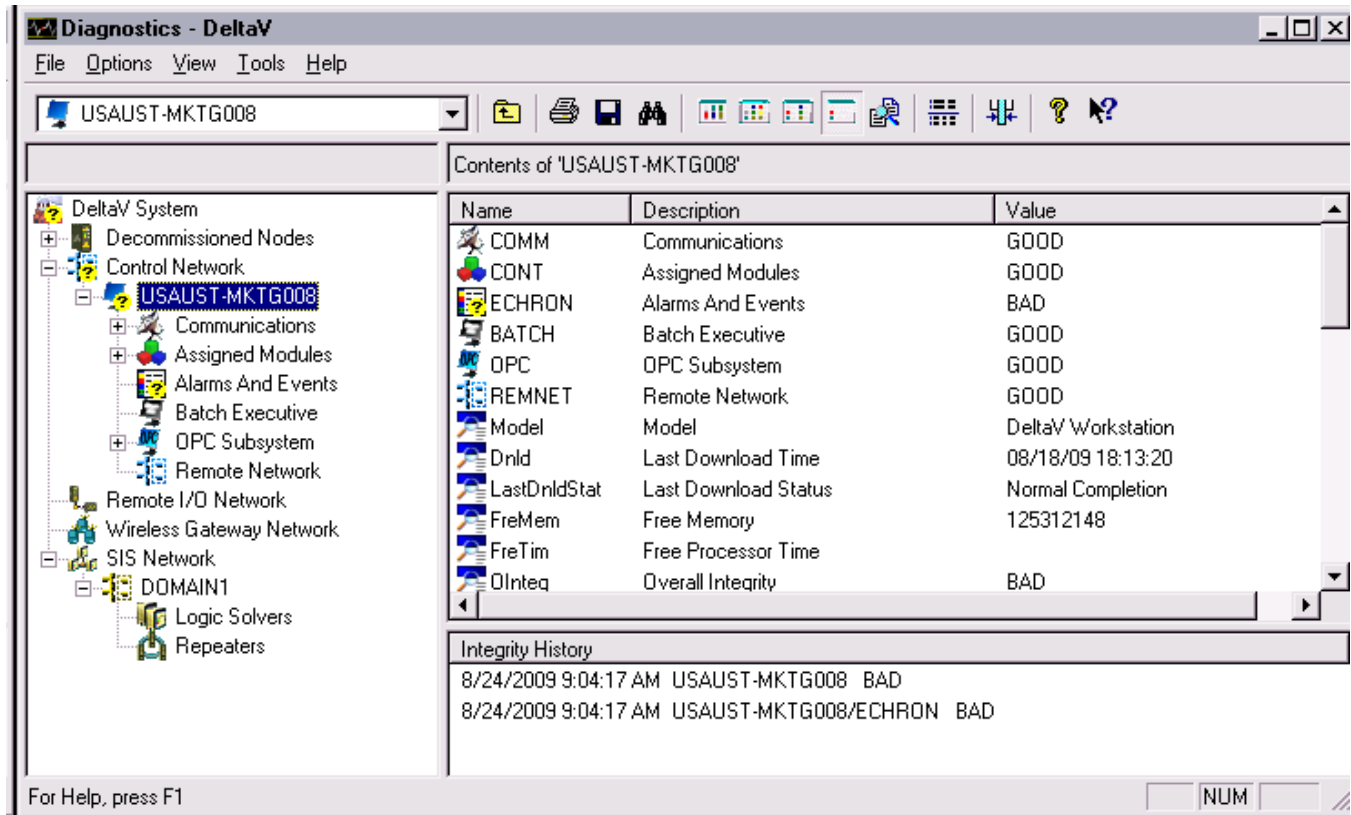


Diagnostics Explorer



The DeltaV Diagnostics Explorer makes system-wide diagnostics easy.

- Easy to learn, easy to use
- Complete system-wide diagnostics
- Easy remote troubleshooting

No longer do you have to remember which diagnostics package to use or how to work each package. This is especially critical when the plant operation depends on immediate diagnosis of the situation.

Introduction

Running diagnostics on your process automation system (PAS) or safety instrumented system (SIS) should be as easy as navigating through directories on your PC. Now, with DeltaV Diagnostics Explorer, it is.

DeltaV Diagnostics Explorer provides *system-wide (PAS and SIS), device-deep diagnostics*. Whether you are trying to quickly check control network communications, verify controller or logic solver redundancy, or *look inside a smart field device*, DeltaV Diagnostics Explorer is the tool that gets to the right information quickly—and easily.

Benefits

Easy to learn, easy to use

Standard Windows Explorer look and feel. If you are familiar with the Windows Explorer, then you already know how to navigate in DeltaV Diagnostics Explorer.

Real-time diagnostic event logging. Diagnostic events are captured and logged as they happen so that you have a complete diagnostics history to help you rapidly determine the state of your DeltaV system.





The DeltaV Diagnostic Explorer Find function takes you right to the source of any diagnostic event. Repeating Find takes you to the next diagnostic event.

Complete, system-wide diagnostics

Across the control network, SIS network and beyond. From any DeltaV workstation on the control network or any Remote Workstation you can view any other node across the control network, whether it's another workstation or controller. Easily inspect summary statuses, detailed device integrity, and communication information.

Wide array of diagnostics information available.

Quickly know the status on your DeltaV workstations, DeltaV Control Network, DeltaV Controller, Logic Solvers and I/O subsystem. Module and revision information is readily available for the controller and all I/O subsystems, including bus type I/O.

Smart device diagnostics. Taking advantage of smart field devices, DeltaV Diagnostics Explorer lets you look at internal device diagnostics—all from your desktop.

Easy remote troubleshooting

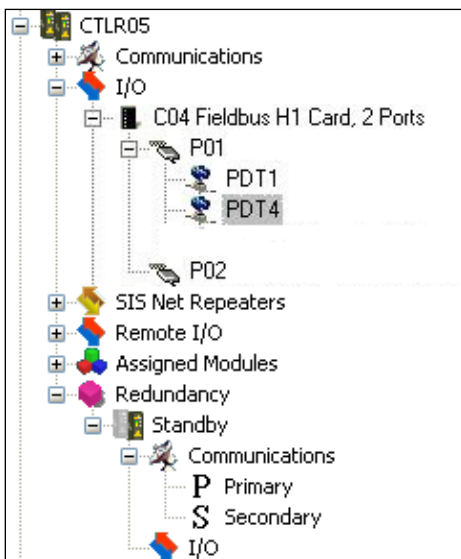
Remote diagnostics. Emerson Process Management factory support can dial into the DeltaV system and run the diagnostics to get a complete picture of the system.

Multiple application access to diagnostics data.

Whether you need to incorporate the diagnostic information in an operator graphic or serve the information out from the Real-Time Data Server to Excel on the plant desktop, the diagnostic information is easily accessible at the right place and time.

Product Description

- **Standard Windows environment.** DeltaV Diagnostics Explorer has the same look and feel as the Microsoft Windows Explorer. To access the diagnostics utility, click the diagnostics icon.
- **Diagnostic event logging.** DeltaV Diagnostics Explorer maintains an event log to track the history of diagnostic events while the application is running.
- **Hardware.** Get detailed integrity information on the controller, software revisions, CPU and memory usage, including information on the I/O subsystem. Diagnostics Explorer identifies failures to replaceable modules. Diagnostics are available down to the individual I/O module.
- **Software.** Real-time communication services, Event Chronicle journal and real-time data servers are software components that provide status to DeltaV Diagnostics Explorer.
- **Communications.** Diagnostics Explorer determines network traffic across the control network. The DeltaV controllers maintain the status of information transmitted. Then, Diagnostics Explorer interrogates and displays it.
- **Remote workstation diagnostics.** Supported on the Remote Workstation.



Device-level diagnostics at your fingertips.

Ordering Information

** Diagnostics Explorer is a standard feature on all workstations. No additional license is required.*

Prerequisites

- A DeltaV workstation, either local or remote.

To locate a sales office near you, visit our website at:

www.EmersonProcess.com/DeltaV

Or call us at:

Asia Pacific: 65.777.8211

Europe, Middle East: 41.41.768.6111

North America, Latin America: +1 800.833.8314 or
+1 512.832.3774

For large power, water, and wastewater applications

contact Power and Water Solutions at:

www.EmersonProcess-powerwater.com

Or call us at:

Asia Pacific: 65.777.8211

Europe, Middle East, Africa: 48.22.630.2443

North America, Latin America: +1 412.963.4000

© Emerson Process Management 2009. All rights reserved. For Emerson Process Management trademarks and service marks, go to:
<http://www.emersonprocess.com/home/news/resources/marks.pdf>.

The contents of this publication are presented for informational purposes only, and while every effort has been made to ensure their accuracy, they are not to be construed as warranties or guarantees, express or implied, regarding the products or services described herein or their use or applicability. All sales are governed by our terms and conditions, which are available on request. We reserve the right to modify or improve the design or specification of such products at any time without notice.

