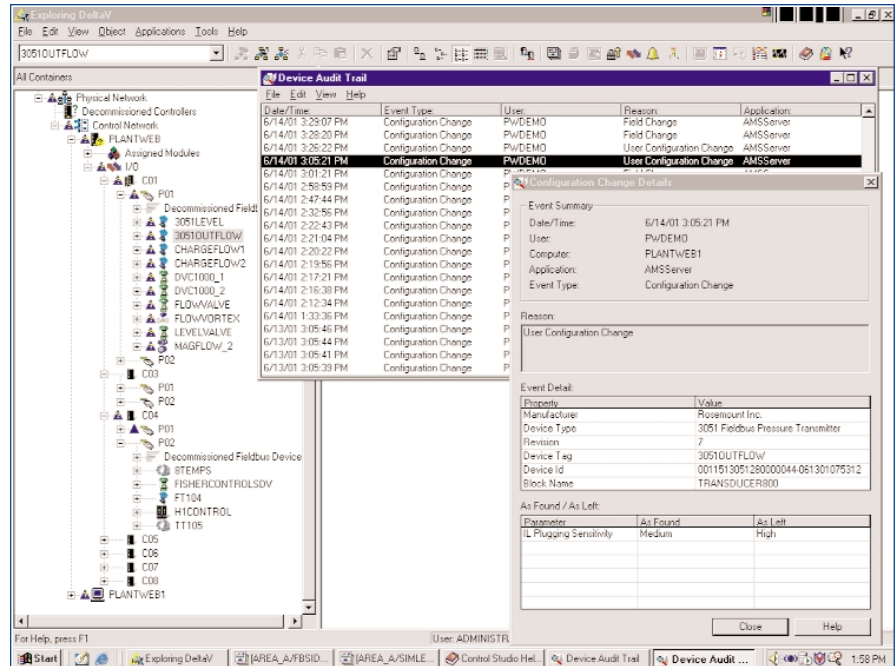


# Device Audit Trail

- Reduce costs by consolidating steps
- Save time by viewing device history easily
- Increase maintenance effectiveness



Now you can have automatic, on-going device documentation in an easy-to-locate format from your DeltaV workstation.

## Track Changes

Accurate, up-to-date record-keeping for FOUNDATION™ fieldbus devices is a powerful addition to your DeltaV™ system.

The AMS Device Audit Trail option automatically generates a historical record for each FOUNDATION™ fieldbus device. Events recorded in the Device Audit Trail include additions, deletions and changes to device configurations.

## Benefits

**Reduce costs by consolidating steps.** You perform a task, then you document it. But sometimes documenting a task requires more time than performing it. Save time – and money – by consolidating those steps through the Device Audit Trail option. As you perform your tasks, the Device Audit Trail option works in the background to automatically create the necessary documentation trail for all FF devices.



**Save time by viewing device history easily.** At a moment's notice, you can determine when and by whom a particular device was reconfigured or tested. You'll find what parameters were changed and for what reason.

**Increase maintenance effectiveness.** The Device Audit Trail option also provides the ability to view historical device configuration records. This provides the most effective means possible to compare past configurations with the current configurations to assist your troubleshooting activities.

## Product Description

The Device Audit Trail option to AMSInside for DeltaV provides historical records of all your FF device configuration changes.

You can access any record by clicking on the Audit Trail menu option that appears adjacent to each device. All records are date and time stamped, and have a user and PC correlation. To ensure data integrity, historical records cannot be edited.

Each record allows users to look at changes to the device and the reason for change.

The tabular format of the Audit Trail option allows you to review all configuration changes or focus on a few specific changes. With this power to focus on your view, you can more easily analyze information.

The Device Audit Trail automatically details changes to a device's configuration, and includes the following information for each event:

- date and time of the event
- user who made the change
- event type (configurations change in this version)
- reason the event was recorded
- application effect on the change

## Device Configuration Records

Retain device configuration records including all device identification information such as output range and materials of construction. You can use these records to help meet process safety requirements.

## Emerson Process Management

### AMS

12001 Technology Drive  
Eden Prairie, MN 55344 USA  
T 1(512) 832-3235  
F 1(952) 828-3033

[www.assetweb.com](http://www.assetweb.com)

To locate a sales office near you,  
visit our website at:

<http://www.EasyDeltaV.com/>

or call us at:

Asia Pacific: 65 777 8211  
Europe, Middle East: 31 70 413 6666  
North America, Latin America: 1 800 833 8314 or  
1 512 832 3774

The contents of this publication are presented for informational purposes only, and while every effort has been made to ensure their accuracy, they are not to be construed as warranties or guarantees, express or implied, regarding the products or services described herein or their use or applicability. All sales are governed by our terms and conditions, which are available on request. We reserve the right to modify or improve the designs or specifications of our products at any time without notice.

All rights reserved. PlantWeb® and DeltaV are marks of one of the Emerson Process Management group of companies. The Emerson logo is a trademark and service mark of Emerson Electric Company. All other marks are the property of their respective owners.

