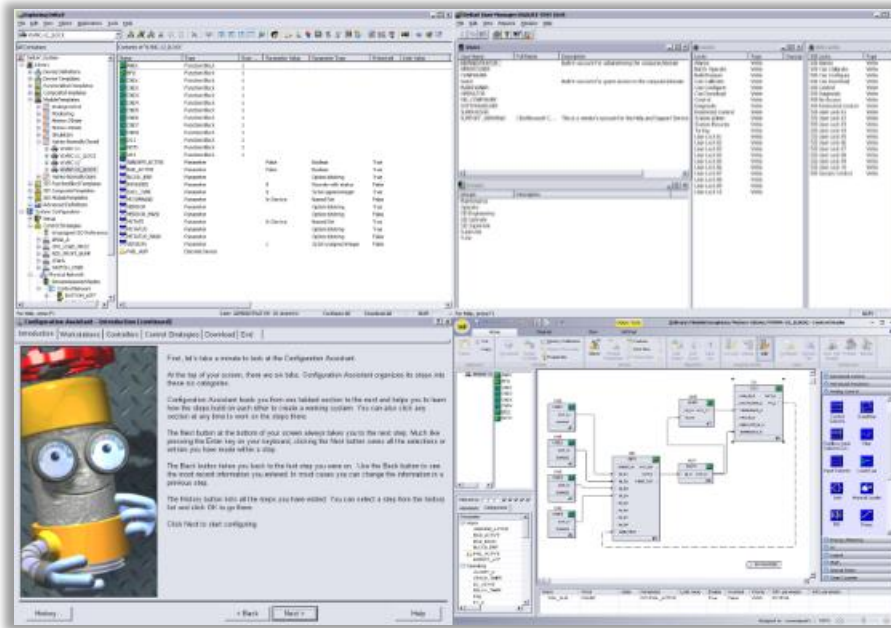


# Configuration Software Suite



Configuration Software Suite is an integrated, modular, and graphical approach to system configuration.

- Simple, automatic system configuration
- Intuitive user interface based on Microsoft Windows Explorer and Fluent Principles
- Library of graphical, modular control strategies
- Built from the ground up for Fieldbus
- Single, global configuration database

Multiple users can *concurrently configure* the system and access the global configuration database from DeltaV workstations.

Based on a *graphical, modular approach* to system configuration, Configuration Studio allows you to create and maintain control strategies as small, modular components (modules) in the DeltaV system.

Using standard tools such as *cut, copy, paste, and drag-and-drop* make it easy to configure your system.

## Introduction

Manage *all aspects* of your system configuration including hardware configuration, history, OPC, batch control strategies and control strategies in workstations, controllers and even field devices using the DeltaV Configuration Studio software suite.



## Benefits

**Simple, automatic system configuration.** The DeltaV Configuration Software Suite puts you in control of the configuration process. Standard product design and pre-engineered, out-of-the-box solutions make Configuration Software Suite inherently easy to learn, use, or even customize.

**User interface based on Microsoft's Explorer & Ribbon.** You will immediately know how to use the Configuration Software Suite because of its *Windows-based, cut, copy, paste, and drag-and-drop features*. The DeltaV Ribbon for Control and Recipe Studio allows seamless transitions from the office to control room. They shorten your learning curve, allowing you to *do more*.

**Library of graphical, modular control strategies.** Use pre-built modules and graphics symbols in your configuration or customize them to fit your process. Also, use the out-of-the-box operator desktop or easily customize it to fit your needs. Graphical configuration simplifies your initial engineering effort and makes maintenance simple.

**Built from the ground up for Fieldbus.** DeltaV Configuration Software Suite uses *FOUNDATION fieldbus* function blocks, so you can run control where it makes the most sense: in the fieldbus device or in the DeltaV controller.

DeltaV controllers, I/O and FOUNDATION fieldbus devices are *auto-sensed* when connected to the control network and automatically added to your configuration. Traditional labor-intensive configuration is a thing of the past!

DeltaV software also provides easy configuration of PROFIBUS DP, DeviceNet, and AS-i bus I/O.

**Single, global configuration database.** This all-inclusive *database* enables you to coordinate all configuration activities. Forget about data mapping between separate databases or referencing your process and engineering information by arcane registers or numbers. Now it's all in one dynamic database—on the ProfessionalPlus Station.

## Product Description

The Configuration Software Suite includes all the applications you need to engineer your DeltaV system. Additional applications are available for advanced control applications such as asset management, batch and auto-tuning.

### Modular, Reusable Control Strategies

The DeltaV system uses modular control strategies to enable you to configure your system. These modules become reusable configurations for your process equipment. (A module is defined as one or more field devices and their related control logic.)

Each module has a unique control tag. A module contains its history and display definition, in addition to its control strategy. Modules are communicated within the system by their names, not their physical addresses. A module can be operated and debugged without affecting other modules.

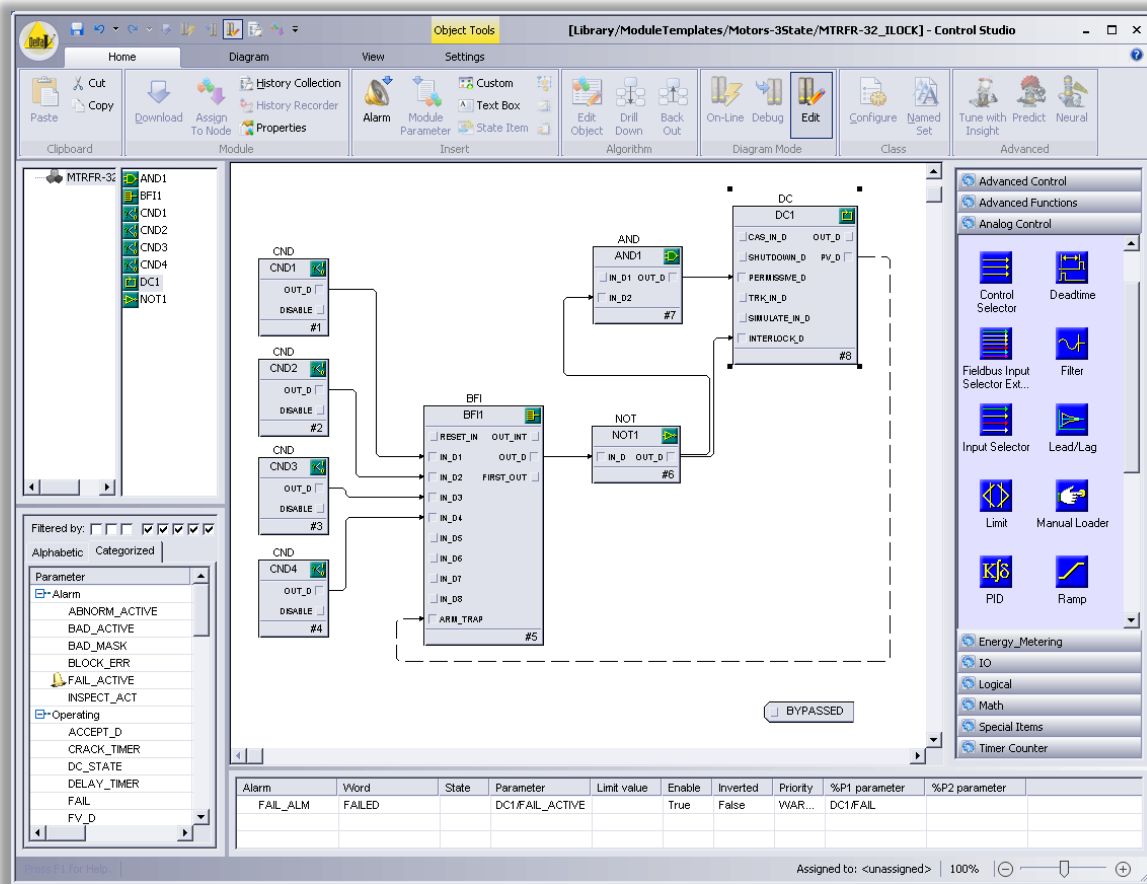
**Top-down or Bottom-up**

The DeltaV modules allow you to design your system from the *top down* and implement as you go. With minimal effort, you can specify loops and field devices, then quickly complete the configuration.

You can implement portions of the system *on the fly*, as process design and control requirements become available. You can finish what you know and leave other sections to complete later. Work-in-progress flags ensure that no items are left incomplete.

Fully design your system first. You can implement the configuration from the *bottom up*, starting with I/O and finishing with control strategies and displays.

You can modify existing strategies independent of the running process. When you are ready, you can install just the changes to the running system without affecting other control modules executing in the controller.



Complete control strategy configuration in Control Studio.

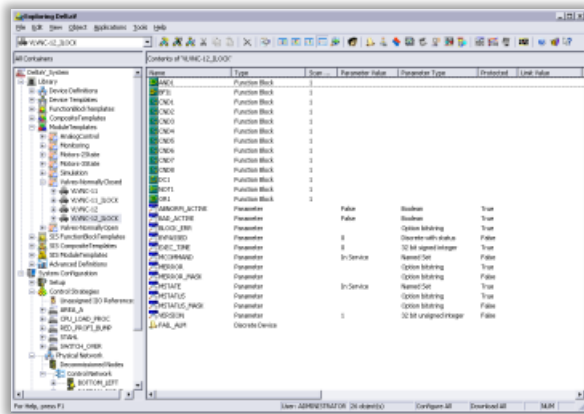
The Tools to Do It—Easily

Configuration Software Suite puts you in control of powerful applications to configure your system.

DeltaV Explorer. This is the primary navigation tool for system configuration. It presents the complete system in a single view and allows direct access to any item. Similar in appearance to the Windows Explorer, it lets you define system components (such as areas, nodes, modules, and alarms) and view the overall structure and layout of your system.

The DeltaV Explorer also provides a fast way to add control modules to your database. When creating your control strategy, you can simply drag and drop control modules from the template library into a plant area. While you're still in the DeltaV Explorer, you can edit the module attributes to fit your application.

The DeltaV Explorer uses the built-in auto-sense capability to build your configuration as you plug in the system hardware, FOUNDATION fieldbus devices, and controllers. This simplifies the engineering process. The DeltaV system is predominately configured in place through interactive dialogs within the DeltaV Explorer.



DeltaV Explorer facilitates easy navigation and provides an intuitive view of your entire system.

Configuration Assistant. This tool provides information and configuration guidance for new and occasional users of the DeltaV system. The configuration assistant guides you through system fundamentals while you configure the system. For the first-time user, this is a great tool to get your system up and running quickly and to learn the basics of the DeltaV system. The Configuration Assistant will guide you through your configuration and DeltaV structure, reacquainting you with DeltaV concepts.

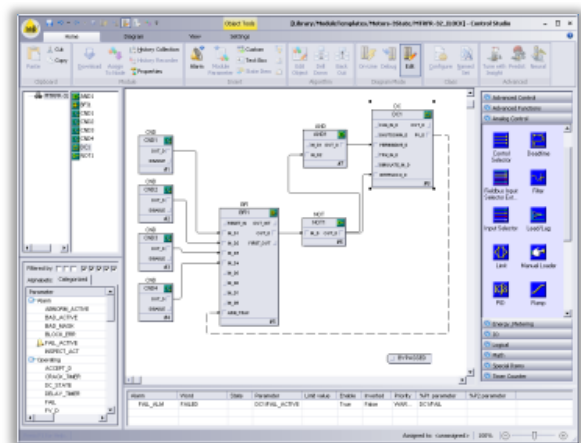


The Configuration Assistant provides step by step instructions to configure your DeltaV system.

Control Studio. It lets you graphically create and modify individual modules and templates that make up your control strategies. Control Studio treats each module as a separate entity—allowing you to focus on a specific module without affecting other modules that may be running in the same controller.

Using Control Studio, you graphically build a control module by dragging items from a palette to the module diagram. You then “wire the items together” to create an algorithm for the module. All DeltaV system communication is based on the module’s name, so module-to-module communication across controllers is transparent to your configuration.

Building on the Microsoft Fluent user interface, you obtain a seamless transition between the office and the configuration environments. Using the Control Studio Ribbon, you mirror all your Office application experiences that shorten the learning curve to allow you to do more.



Control Studio is a powerful, visual tool for creating control strategies.

**DeltaV User Manager.** DeltaV software includes a powerful, yet flexible system security structure. We recognize that all facilities do not operate the same. With A DeltaV system, security is completely user modifiable—to *match your operating philosophy*. System-wide security parameters define each piece of data. No matter what you're doing in DeltaV, or a third-party application on the Application Station, security is checked to ensure that each user has the correct privilege for each task.

DeltaV User Manager *is integrated with standard Windows security*. All user passwords are maintained as a part of standard Windows security. In the DeltaV User Manager, you define valid system users and their privileges and DeltaV updates Windows security regarding new and modified users.

You can define groups of users, such as operators or supervisors, and assign them DeltaV privileges. One group may be able to change only operating parameters, while another also may be able to change selected tuning parameters. And, you can limit a user to particular areas of the plant.



*The DeltaV User Manager ensures security is implemented to match your operating philosophy.*

Ordering Information

Description	Model Number
Configuration Software Suite	VE2162

Related Products

- Control Studio On-line. Displays your control strategies while they're running—whether they are running in DeltaV or fieldbus devices.
- Operator Display Products. Create high-resolution, real-time process graphics for the Operator Interface using graphics, text, data, and animation tools. Refer to the Operator Display Products data sheet for further details.
- DeltaV Tune. It lets you determine the right tuning parameters for your PID and fuzzy loops, all at the touch of a button.
- Foundation fieldbus in the DeltaV System and AMSinside HART. Provides the engineering interface to device calibration and configuration software for HART and Foundation fieldbus devices.
- Recipe Studio. Configures unique recipes and creates the steps for successful batch production.

Prerequisites

- One ProfessionalPLUS Station in a DeltaV system.
- Control Studio Online license (VE2161) is required over and above VE2162 in order to view or debug running control strategies

To locate a sales office near you, visit our website at:  
**www.EmersonProcess.com/DeltaV**  
 Or call us at:  
 Asia Pacific: 65.777.8211  
 Europe, Middle East: 41.41.768.6111  
 North America, Latin America: +1 800.833.8314 or  
 +1 512.832.3774

For large power, water, and wastewater applications contact Power and Water Solutions at:  
**www.EmersonProcess-powerwater.com**  
 Or call us at:  
 Asia Pacific: 65.777.8211  
 Europe, Middle East, Africa: 48.22.630.2443  
 North America, Latin America: +1 412.963.4000

© Emerson Process Management 2009. All rights reserved. For Emerson Process Management trademarks and service marks, go to:  
<http://www.emersonprocess.com/home/news/resources/marks.pdf>.

The contents of this publication are presented for informational purposes only, and while every effort has been made to ensure their accuracy, they are not to be construed as warranties or guarantees, express or implied, regarding the products or services described herein or their use or applicability. All sales are governed by our terms and conditions, which are available on request. We reserve the right to modify or improve the design or specification of such products at any time without notice.

