

Alarm Help

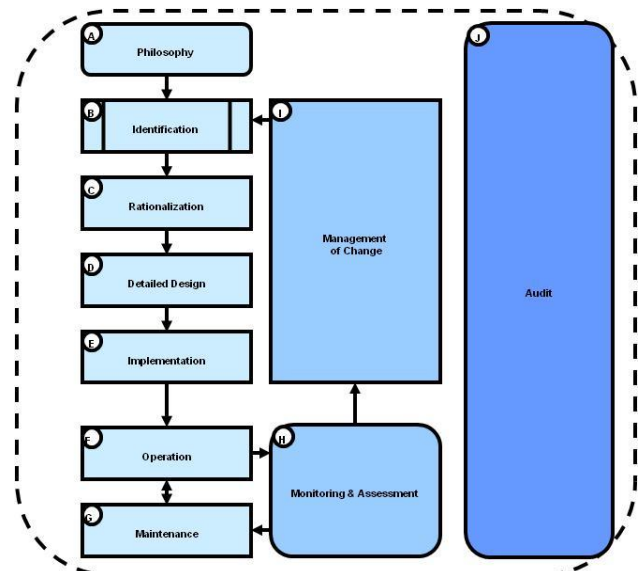


Protect your operation with immediate Operator access to approved alarm response procedures.

- Integrated support for ISA-18.2 alarm system management data retention
- Native simplicity for a robust efficient implementation
- Instant in-context Operator alarm help
- An enhanced Operator experience

Introduction

The DeltaV system provide a solid foundation for implementing and sustaining an effective alarm management program that conforms to *ISA-18.2 – Management of Alarm Systems for the Process Industries and EEMUA-191 Alarm Systems – A Guide to Design, Management and Procurement*. One important aspect of alarm management is ensuring Operators have ready access to approved alarm response procedures. DeltaV Alarm Help provides a simple and highly dependable solution, proving in-context access to this and other alarm rationalization information specified by ISA-18.2, resident in the native DeltaV system configuration.



ISA-18.2 Alarm System Management Lifecycle



Benefits

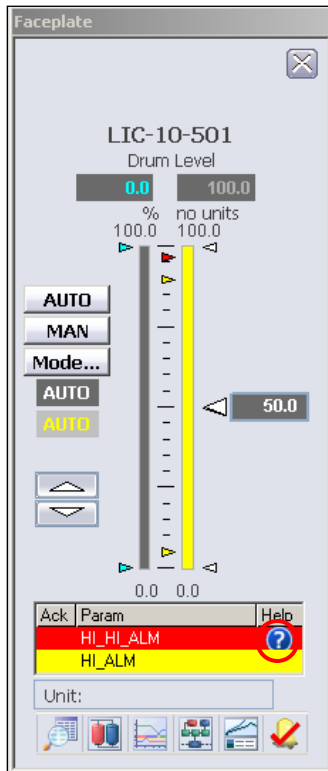
Native simplicity for a robust efficient implementation.

Alarm parameters in the DeltaV system configuration database satisfy the ‘master alarm database’ requirements of ISA-18.2, to record information like consequence of inaction and expected operator response. *The Control Engineer uses their same familiar engineering tools to accomplish and document alarm rationalization.*

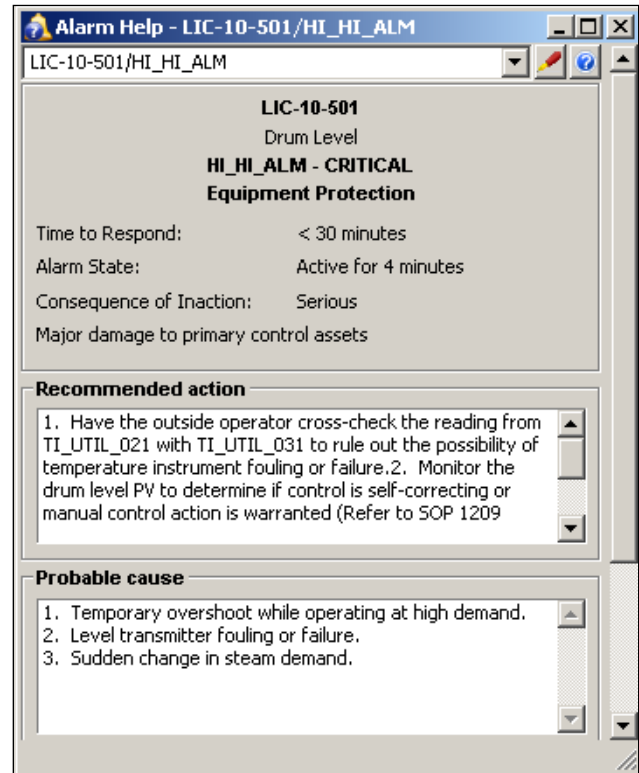
Native system configuration download methods ensure Alarm Help is distributed to each and every workstation. *Alarm Help is available from any workstation, regardless of connectivity to any other workstations or servers.*

Alarm Help is presented in context. When an alarm is raised *the Operator is just one mouse click away from the prescribed guidance*, along with probable cause and other information captured in the alarm rationalization process.

Eliminate Operator distraction and frustration searching for nonexistent help. Many customers take a gradual approach to alarm rationalization, completing help for some but not all alarms. If no help is available, the help icon is masked to avoid frustration and eventual discontinued Operator usage.



Visual indication of available alarm help, with one click access



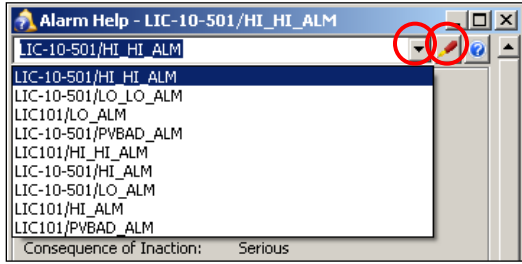
Alarm Help delivers your approved alarm response and other alarm rationalization information to the Operator

An enhanced Operator experience. The Operator can easily *recall recently viewed Alarm Help*, which is highly useful when managing multiple related alarm conditions.

Alarm Help can be retrieved for any alarm regardless of state, *ideal for training when commissioning new alarms.*

Operators with expert knowledge can be empowered to add or modify Alarm Help directly in the DeltaV Operate environment, which *supports an operations led approach to alarm rationalization.*

Alarm Help *can be easily customized* to match Operator preferences and the local site alarm management philosophy. The three alarm help text fields can be omitting or re-purposed. Selection lists for alarm classification, time to respond and consequence of inaction can be customized.



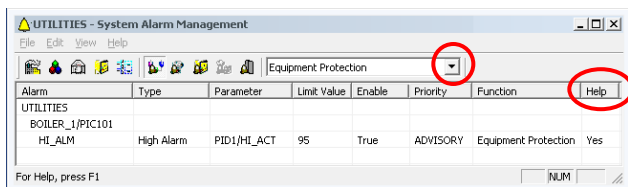
The Operator can enter the path an alarm that is not in context or quickly switch to one of the last ten viewed.

With the right security key the user can modify Alarm Help.

Product Description

The following features are available standard on DeltaV systems, to facilitate implementation of an ISA-18.2 / EEMUA-191 alarm management program.

- Alarm configuration fields for entry of functional classification, consequence of inaction and time to respond. Selection lists may be customized using named sets. Three 500 character text fields are provided, for recommended operator action, probable cause and alarm design, which can be disabled or reconfigured for alternate purposes. Default values are provided for all fields based on EEMUA-191 and ISA-18.2.
- Alarm summary control for easy customization of alarm lists, faceplates and process graphics, to enable and tailor presentation of icons for in-context access to Alarm Help. Default alarm lists and faceplates enable in-context Alarm Help access.
- Full support for configuring and populating alarm help within the DeltaV engineering environment, accessible via DeltaV Explorer, System Alarm Management (SAM) and Control Studio, including bulk import/export capability.
- ProfessionalPlus workstation access to the run-time Alarm Help application (described below).



The System Alarm Management utility allows filtering by alarm function (ISA-18.2 alarm classification for MoC), Alarm Help editing and print to XML capability.

Features requiring purchase of Alarm Help:

- Access to the run-time Alarm Help application from workstations other than the ProfessionalPlus.

Run-time Alarm Help application features:

- In-context and on-demand viewing of Alarm Help from DeltaV Operate.
- A predefined security key to enable approved users to modify and download Alarm Help parameters for individual alarms.
- Display window can be resized and re-positioned, with automatic recall of last screen location and size.
- Ability to access help for alarms other than the one in context, with retention of the last 10 viewed alarms for immediate recall.
- Presentation of active alarm time for easy comparison to configured time to respond.

Alarm List			
Module/Param	Description	Alarm	Help
LIC101/Hi_Hi_ALM	Control Module	HIHI	
LIC-10-501/Hi_Hi_ALM	Drum Level	HIHI	?
LIC101/Hi_ALM	Control Module	HIGH	
LIC-10-501/Hi_ALM	Drum Level	HIGH	

The Operator can see which alarms have an approved response procedure, avoiding wasted effort and frustration searching an out of context source.

System Compatibility

- DeltaV System v11 or higher.

Ordering Information

Description	Model Number
Alarm Help	VE2149

Related Products

- **DeltaV Operate.** High performance operator graphics, trends and alarms offered in standard operating layouts and utilizing system-wide built-in security.
- **Configuration Audit Trail.** A powerful tool that tracks changes and manages revision information for any item in the DeltaV configuration database, including Safety Instrumented System (SIS) items.

Prerequisites

- Alarm Help is licensed for use on Professional, Operator, Maintenance and Base Workstations.
- Alarm Help is bundled with the ProfessionalPlus workstation and not available for Application Stations.

To locate a sales office near you, visit our website at:
www.EmersonProcess.com/DeltaV
Or call us at:
 Asia Pacific: 65.777.8211
 Europe, Middle East: 41.41.768.6111
 North America, Latin America: +1 800.833.8314 or
 +1 512.832.3774

For large power, water, and wastewater applications contact Power and Water Solutions at:
www.EmersonProcess-powerwater.com
Or call us at:
 Asia Pacific: 65.777.8211
 Europe, Middle East, Africa: 48.22.630.2443
 North America, Latin America: +1 412.963.4000

© Emerson Process Management 2009. All rights reserved. For Emerson Process Management trademarks and service marks, go to: <http://www.emersonprocess.com/home/news/resources/marks.pdf>.

The contents of this publication are presented for informational purposes only, and while every effort has been made to ensure their accuracy, they are not to be construed as warranties or guarantees, express or implied, regarding the products or services described herein or their use or applicability. All sales are governed by our terms and conditions, which are available on request. We reserve the right to modify or improve the design or specification of such products at any time without notice.

