

DeltaV™ v11.3 Release—Delivers!



faster installation and more reliable operation.

Wireless I/O Card

The DeltaV system's new Wireless I/O Card provides a fully redundant solution for wireless networks. The Wireless I/O Card seamlessly integrates with the DeltaV system and the AMS Suite: Intelligent Device Manager. WirelessHART devices have the same PlantWeb™ alerts as their wired counterparts, providing a consistent user experience.

Ethernet Interface

The DeltaV system integrates MYNAH Technologies' Virtual I/O Module (VIM) with DeltaV S-series hardware. It provides an interface to plant Ethernet networks and devices that use Ethernet/IP or Modbus TCP/IP protocols, such as PLCs, motor control centers and weigh scales.

Ultimate Scalability Zones Enhancement

Now up to 15 zones can be integrated, and can share information across DeltaV systems. Zones provide the flexibility to expand and upgrade each zone independently, while still effectively operating and managing large systems.

Embedded Intelligent Control

Improved PID Performance for Wireless / Sampled Inputs

The DeltaV PID function block has a new user configuration option called PIDPlus. This option provides improved performance in applications using WirelessHART or sampled inputs in control where the measurement is infrequently updated.

I/O on Demand

S-series Next Generation Hardware

The DeltaV™ system's new S-series hardware design delivers installation and robustness enhancements while still using the system's proven technologies. "Easy-on-hard-off" technology means there are no screws used for installation, allowing components to snap together, and a simple manual push-button action on top of the cards to remove them. New heat dissipating technology channels heat through protected vents that prevent particles from entering the cards.

Electronic Marshalling

Electronic Marshalling provides a new level of system flexibility while eliminating work, design and engineering previously needed for cross-marshalling wires to install field devices. Each I/O channel signal type is designated by a characterization module (CHARM), eliminating complex I/O calculations. Each channel can be assigned to any

S-series controller, permitting late binding of I/O to controllers without additional wiring.

H1 Card with Integrated Power

Eliminate the need for third party power and diagnostics for FOUNDATION fieldbus segments with the S-series H1 card. Fewer components means smaller footprint,



For complete product information, visit
EmersonProcess.com/DeltaV

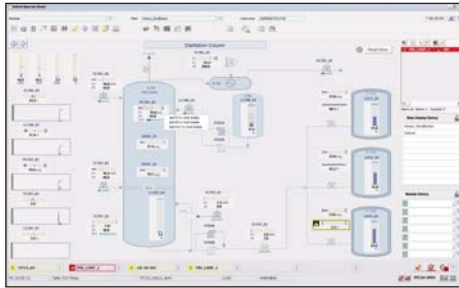


Expanded HART Support

HART implementation in the DeltaV system has been enhanced to help users realize the value of the new functionalities included with HART revision 7, including improved diagnostics and device write protection.

Inherently Integrated Human Centered Design Operator Experience

Operator navigation has been improved, with a focus on the operators' experience. Parameters can be quickly added to a trend by simply right clicking on a tag. Also, there is an embedded Google-like search for fast access to tags. Searches will look at tag area, name and description so minimal information will still provide results.



Color Theme Graphics and Pattern Recognition

A combination of the right display colors and pattern recognition has been added to the DeltaV interface to reduce operator errors. For easy implementation, the DeltaV system has four "out-of-the-box" color "themes" for operator displays. Shape or pattern graphic elements enable operators to easily scan process values without having to read and analyze every value—which is especially important for abnormal situation management.

Contextual Alarm Knowledge

Relevant alarm knowledge from expert operators can be easily embedded into the alarm help function in the operator interface. All operators can view alarm rationalization such as time to respond, consequence of inaction and functional classification. Six new alarm sounds have been added and can simultaneously differentiate between console locations, as well as alarm priority. The result: quicker, more effective operator response to alarms.

Enhanced Startup and Commissioning

The DeltaV system comes PlantWeb ready through tighter integration with AMS Device Manager. Users can now commission and configure devices "out-of-the-box" from DeltaV Explorer. The complete functionality of AMS Device Manager can easily be deployed via license code to provide predictive maintenance and field device health diagnostic capabilities—enabling better plant performance.

Human Centered Design for Maintenance Users

New Device Dashboards have been designed so that every device has a similar look that is simple, easy to understand, and easy to take action on. This means that FOUNDATION fieldbus device dashboards look consistent with HART device dashboards, wireless device dashboards, etc...

Integrated Machinery Health

By integrating critical machinery protection and prediction information from the CSI 6500 Machinery Health Monitor with the DeltaV system, operators have

access to actionable information directly in the DeltaV system. The simple three-step integration process eliminates hundreds of man-hours and delivers accurate, actionable data to operators.

Batch Redundancy

The batch redundancy option provides both the DeltaV Batch Executive and the DeltaV Campaign Manager with higher plant availability for batch operations. Batch redundancy enables online upgrades, making it easier to keep the DeltaV system current.

Built for Purpose

Smart Switches

Network switches are now available as DeltaV devices—with fully integrated setup, security and diagnostics to reduce overall system complexity. No IT personnel help is needed; process control engineers and technicians can easily install the plug-and-play switches.

DeltaV OPC Express Interface (Xi) Server

The DeltaV OPC Xi Server provides a robust and secure communication interface for both real-time and historical data. OPC Xi Client applications can reside anywhere – from the plant floor to the enterprise.

Windows 7 / Windows Server 2008 / SQL Server 2008

DeltaV v11.3 runs in either Windows 7 Professional or Windows Server 2008 Standard Edition environments. The Microsoft SQL Server-based applications have been upgraded to SQL Server 2008 in DeltaV v11.3.

© 2010 Emerson Process Management. All rights reserved. The Emerson logo is a trademark and service mark of Emerson Electric Co.

For Emerson Process Management trademarks and service marks, go to www.emersonprocess.com/home/news/resources/marks.pdf. All other marks are the property of their respective owners.



For complete product information, visit
EmersonProcess.com/DeltaV

