

SMART WIRELESS THUM™ ADAPTER

ROSEMOUNT® 3051SMV MULTIVARIABLE™ FLOWMETER

WirelessHART

Achieve greater visibility and deliver real results with a better multivariable measurement

Better measurement is the key to better control. The 3051SMV delivers unprecedented performance and capabilities by integrating MultiVariable measurement into the industry-leading, scalable 3051S platform.

With its simplified mass and energy flow measurement, accuracy is increased and faster updates are provided through patented, advanced compensation techniques. The result is better and effortless flow optimization for tighter control.



The Rosemount 3051SMV with the Smart Wireless THUM adapter allows easy information access and powers the PlantWeb digital plant architecture by delivering more advanced field intelligence for even better decision-making to help you achieve unparalleled efficiency and productivity.

Access to more comprehensive data enables you to:

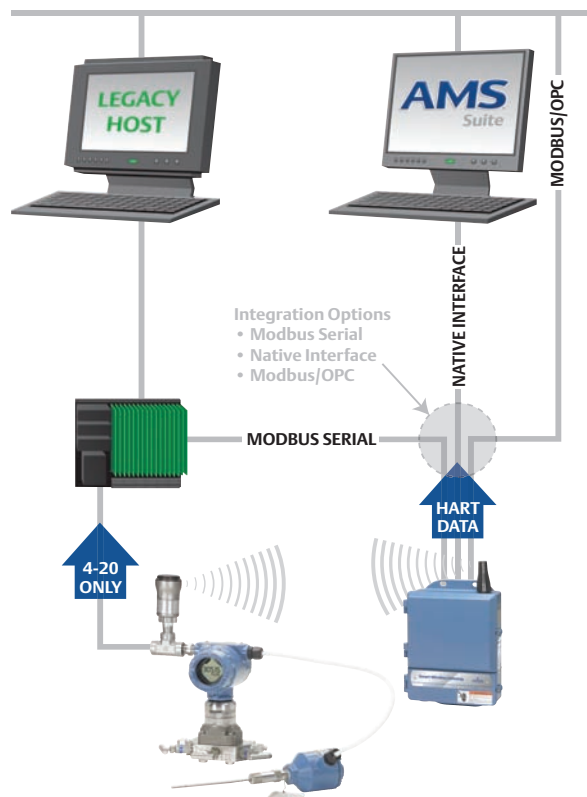
- Enhance quality and improve productivity
- Enhance availability with proactive monitoring
- Detect abnormal conditions before it causes a major problem

EASY TO USE. EASY TO INTEGRATE.

The Smart Wireless THUM adapter, allows you to wirelessly access the full capabilities of the 3051SMV Multi-Variable flowmeter. All you need in addition to the THUM is access to a Smart Wireless Gateway.

All of Emerson's Smart Wireless field network devices can be integrated directly into your existing automation architecture without the need for upfront engineering, site surveys or additional software. Wired or wireless the network looks the same to your operators.

For additional ease of use, the AMS® Suite provides more convenient access to information that you don't have today. Emerson's Smart Wireless technologies put valuable information within reach – easily and cost effectively – to give you better insights into what's happening in your operation.



Can I use the 4-20mA to transmit mass of energy flow information and use the THUM to wirelessly communicate static pressure and process temperature?

Yes, the THUM can provide additional process variable information.

Can I use the THUM to view flow configuration information?

Yes, the flow configuration is stored in the transmitter and can be accessed through the THUM.

What diagnostic information in the 3051SMV flowmeter is available via the THUM?

Measurement quality and limit status, test calculation, back-up temperature status, and SuperModule® temperature.

ROSEMOUNT®


EMERSON™
Process Management

BETTER INFORMATION FOR IMPROVED PERFORMANCE

The Smart Wireless THUM Adapter can transmit up to four variables and additional HART status information at the user configurable update rate. Access to this new information enables you to more fully optimize your operations for improved performance.

Process Variables

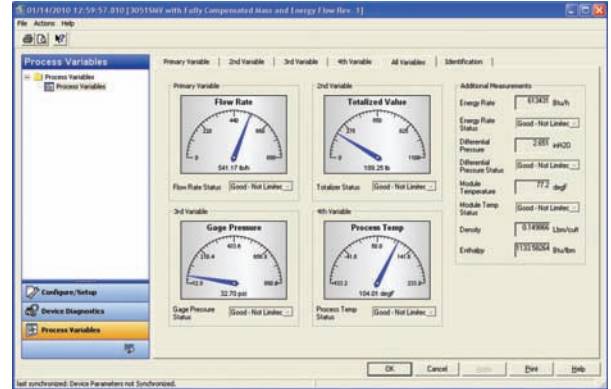
- Mass Flow
- Energy Flow
- Totalized Flow
- Differential Pressure
- Static Pressure
- Process Temperature
- SuperModule Temperature

Additional Information

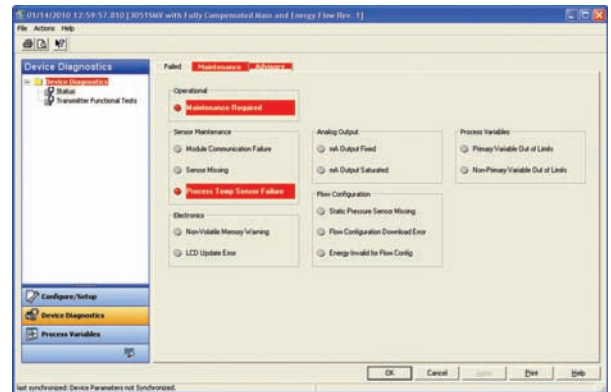
- Density
- Viscosity
- Heating Value/Enthalpy
- Gas Expansion Factor
- Discharge Coefficient
- Velocity of Approach Factor
- Reynolds Number

TECHNICAL REQUIREMENTS

- Voltage drop across THUM: 2.25 Volts at 3.5 mA; 1 Volt at 25 mA
- Loop resistance required: 250 Ohms
- Power requirements: 14.5 Volts
- THUM update rate: 8 seconds to 60 minutes



Start-up and maintenance is further enhanced through real-time access and validation of all flow-configuration variables.



The THUM provides easy access to device diagnostics for better decision making.

©2010 Emerson Process Management. All rights reserved.

The Emerson logo is a trademark and service mark of Emerson Electric Co. Rosemount and AMS are a marks of one of the Emerson Process Management family of companies. All other marks are property of their respective owners.

The contents of this publication are presented for information purposes only, and while effort has been made to ensure their accuracy, they are not to be construed as warranties or guarantees, express or implied, regarding the products or service described wherein or their use or applicability. All sales are governed by our terms and conditions, which are available on request. We reserve the right to modify or improve the designs or specifications of our products at any time without notice.

**Emerson Process Management
Rosemount Measurement**
8200 Market Boulevard
Chanhassen, MN 55317 USA
T (USA) +1 800 999 9307
T (International) +1 952 906 8888
F +1 952 949 7001
www.Rosemount.com

Emerson Process Management
Blegistrasse 23
P.O. Box 1046
CH 6341 Baar
Switzerland
T +41 (0) 41 768 6111
F +41 (0) 41 768 6300

Emerson FZE
P.O. Box 17033
Jebel Ali Free Zone
Dubai UAE
T +971 4 811 8100
F +971 4 886 5465

Emerson Process Management Asia Pacific Pte Ltd
1 Pandan Crescent
Singapore 128461
T +65 6777 8211
F +65 6777 0947
Service Support Hotline: +65 6770 8711
Enquiries@AP.EmersonProcess.com