

## HART® Over PROFIBUS Interface

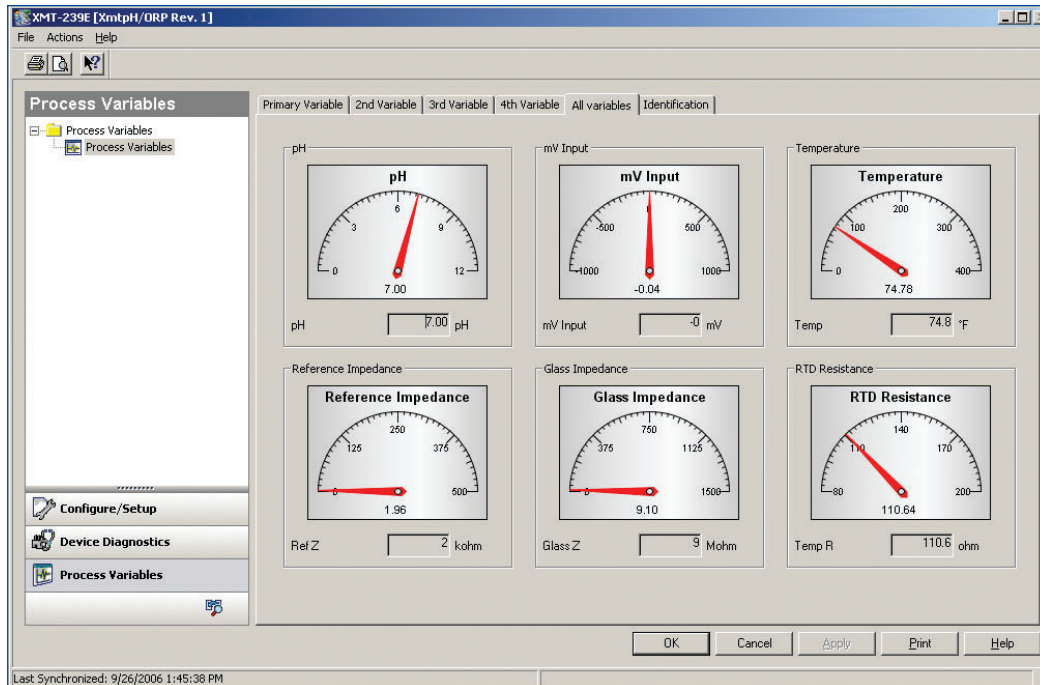


*The HART Over PROFIBUS Interface is easy to implement and cost effective because it works with your existing devices and remote I/O.*

- *Identify, troubleshoot, and resolve device issues using the PROFIBUS network to access HART device diagnostics*
- *Configure HART devices remotely*
- *Streamline calibration procedures and documentation activities*

### **Predictive Maintenance Capability for a Wider Range of Applications**

The HART Over PROFIBUS Interface enables you to use AMS Suite: Intelligent Device Manager for diagnostics, configuration, calibration, and documentation activities on HART devices in an online environment where PROFIBUS networks are used with remote I/O. You gain the full benefits of AMS Device Manager, including access to AMS ValveLink™ and other SNAP-ON™ applications, regardless of your host system. With the HART Over PROFIBUS Interface, you get a cost-effective solution for remote configuration and diagnostics



*AMS Device Manager allows you to access multiple process variables in a single view with its new graphical interface.*

without the additional costs of multiplexer installation and wiring. The HART over PROFIBUS Interface is part of Emerson's commitment to developing applications that easily integrate with new and existing equipment from other manufacturers.

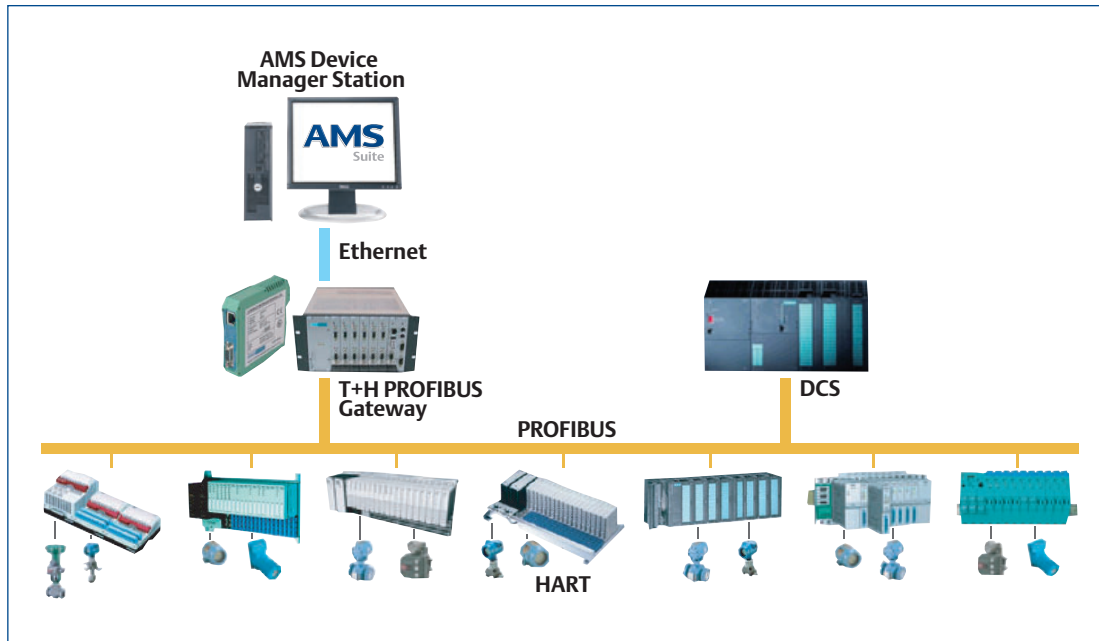
## Access the Full Power of Your Intelligent Field Devices

The HART Over PROFIBUS Interface helps you get more out of the intelligence from your field devices by giving you easier access to an online AMS Device Manager when you have a PROFIBUS network.

With AMS Device Manager, you can quickly see the health of any connected HART device using the diagnostics and monitoring capabilities. The Alert Monitor summary screen provides an overview of all device alerts and gives you the ability to access additional device information for more details.

AMS Device Manager makes configuration fast and easy. Use the configuration management tool to change, store, compare, and transfer device configurations. Also streamline calibration by using AMS Device Manager to define test schemes, schedule calibrations, and manage calibration data.

Simplify documentation around device tasks with the Audit Trail in AMS Device Manager. In addition, manual entries can be created to document events that may not be automatically captured.



*Gain the benefits of an online AMS Device Manager with the HART Over PROFIBUS solution.*

## Interface Architecture

The HART Over PROFIBUS Interface works with your existing devices and remote I/O. This solution provides a bus-level connection to multiple HART devices. The HART devices are connected to a remote I/O system that communicates with the Trebing + Himstedt (T+H) PROFIBUS Gateway via the PROFIBUS DPV1 network.

PROFIBUS DPV1 permits acyclic (HART) data exchange between a DP Master and DP Slave, enabling HART messages to travel across the PROFIBUS network.

The T+H PROFIBUS Gateway is available with Ethernet or PCMCIA connections. The AMS Device Manager system interface accesses the PROFIBUS Gateway by its DNS or IP address.

The components required to implement the HART Over PROFIBUS solution include AMS Device Manager version 6.2 or greater, AMS Device Manager HART Over PROFIBUS Interface, T+H PROFIBUS Gateway, and the PROFIBUS remote I/O subsystem with HART I/O modules.

Remote I/O subsystems supported by the HART Over PROFIBUS Interface:

- ABB S900
- ABB S800
- CEAG LB
- CEAG FB
- MTL 8000 1/1
- P+F RPI KSD2-GW-PRO
- Siemens ET200M
- Siemens ET200ISP
- STAHL I.S. 1
- Turck Excom

**Emerson Process Management**

**Asset Optimization**

12001 Technology Drive  
Eden Prairie, MN 55344 USA  
T 1(952) 828-3633  
F 1(952) 828-3006

©2011, Emerson Process Management.

The contents of this publication are presented for informational purposes only, and while every effort has been made to ensure their accuracy, they are not to be construed as warranties or guarantees, express or implied, regarding the products or services described herein or their use or applicability. All sales are governed by our terms and conditions, which are available on request. We reserve the right to modify or improve the designs or specifications of our products at any time without notice.

All rights reserved. AMS, PlantWeb, ValveLink, and SNAP-ON are marks of one of the Emerson Process Management group of companies. The Emerson logo is a trademark and service mark of Emerson Electric Co. All other marks are the property of their respective owners.



AMS Suite: Intelligent Device Manager powers PlantWeb through predictive and proactive maintenance of intelligent field devices to improve availability and performance.