

Handheld Communicator Interface

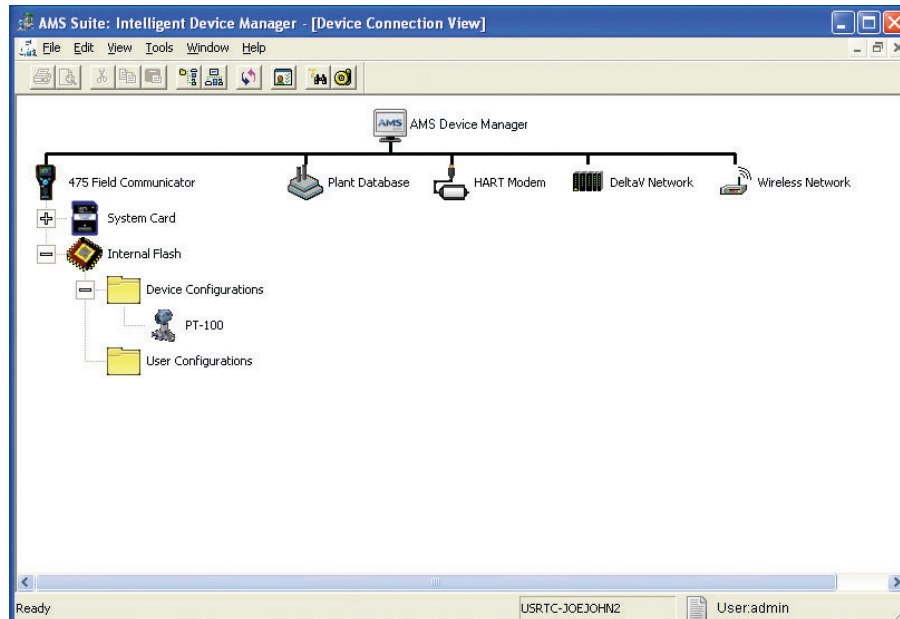


The Handheld Communicator Interface enables easy synchronization of field device information between your 475 Field Communicator and AMS Device Manager.

- *Retain up-to-date records of installed field devices*
- *Improve productivity*
- *Increase field device maintenance effectiveness*

The Handheld Communicator Interface option enables you to synchronize device configuration information between your AMS Device Manager database and a 475 or 375 Field Communicator.

With the Handheld Communicator Interface option, you can take advantage of all of the features of AMS Device Manager – including a simple drag-and-drop transfer of configurations between AMS Device Manager and your handheld communicator.



The Handheld Communicator Interface brings the field to the office.

Benefits

Retain up-to-date records of installed field devices. With the ability to transfer device configurations between your 475 Field Communicator and AMS Device Manager, you gain complete control over your field device information. Accurate records of device configurations are invaluable in showing your compliance with regulatory requirements.

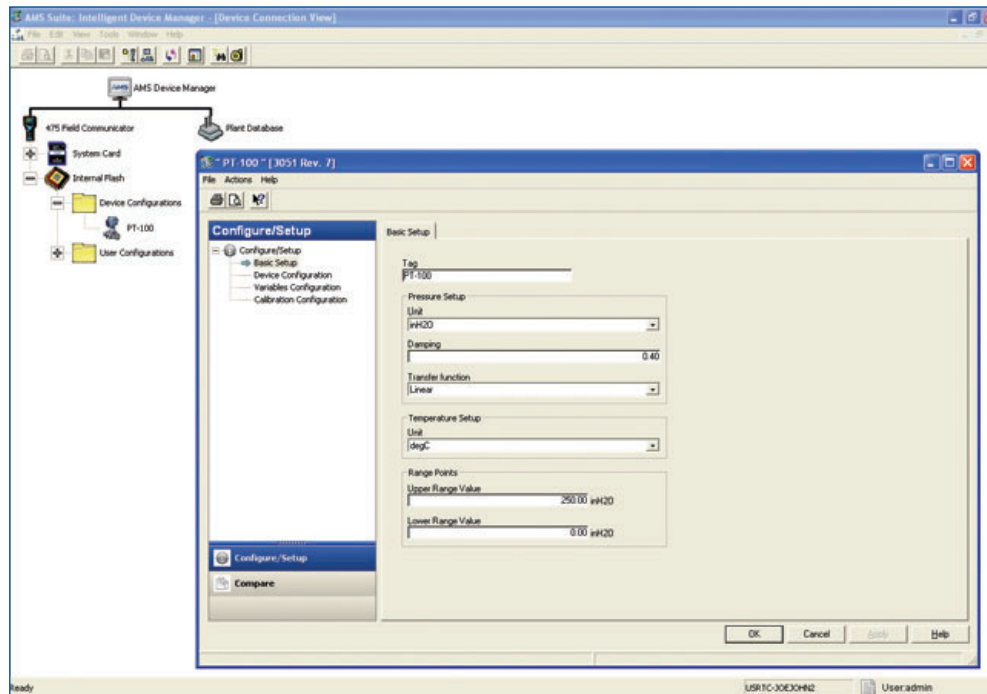
Information from your 475 or 375 Field Communicator can be stored in the AMS Device Manager database for easy access to date- and time-stamped field device information.

Improve productivity with easy drag-and-drop transfer of field device information. Using Bluetooth technology, quickly connect your 475 Field Communicator to a PC to transfer information or connect via an IrDA port. The 375 Field Communicator also connects via an IrDA port. Configuration changes done in AMS Device

Manager are easily downloaded by simply dragging and dropping the configurations onto the communicator icon on the screen. Then you are ready to go to the field to download new configurations to the field devices. You can also store up to 1,000 configurations on the 475 Field Communicator and transfer them to your AMS Device Manager system.

With a complete field device database available, maintenance scheduling becomes faster and easier. Configuration changes can be prepared in advance, so that maintenance activities can be done more effectively and proactively.

Increase maintenance effectiveness by reconciling information to your asset database. Once a configuration change has been made to a field device, the change is quickly and easily uploaded to AMS Device Manager. You can review the changes to the device configuration and store them to the database. An Audit Trail record of the field change is automatically created.



The Handheld Communicator Interface lets you update your AMS Device Manager database to maintain up-to-date records of field device configurations.

Specifications

The 475 Field Communicator uses Bluetooth or IrDA communication to connect to a PC. The 375 Field Communicator uses IrDA communication for this interface.

If your PC does not include an IR port, an IrDA to USB adapter can be purchased separately (Part # 00375-0015-0002).

For more information on the 475 Field Communicator, go to www.fieldcommunicator.com or contact your local Emerson Process Management sales representative.

Emerson Process Management Asset Optimization

12001 Technology Drive
Eden Prairie, MN 55344 USA
T 1(952)828-3633
F 1(952)828-3006

©2011, Emerson Process Management.

The contents of this publication are presented for informational purposes only, and while every effort has been made to ensure their accuracy, they are not to be construed as warranties or guarantees, express or implied, regarding the products or services described herein or their use or applicability. All sales are governed by our terms and conditions, which are available on request. We reserve the right to modify or improve the designs or specifications of our products at any time without notice.

All rights reserved. AMS is a mark of one of the Emerson Process Management group of companies. The Emerson logo is a trademark and service mark of Emerson Electric Co. All other marks are the property of their respective owners.



AMS Suite: Intelligent Device Manager powers PlantWeb through predictive and proactive maintenance of intelligent field devices to improve availability and performance.