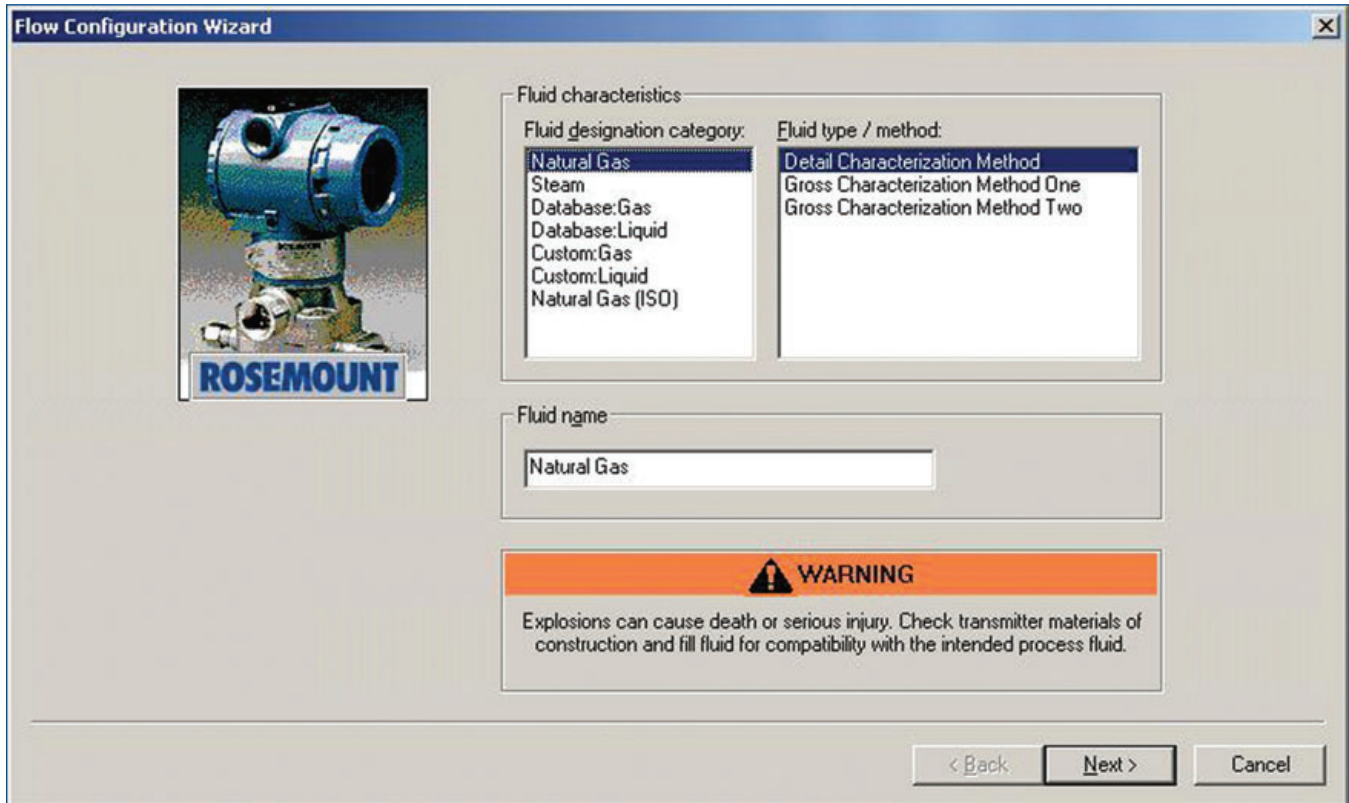


MV Engineering Assistant SNAP-ON™ Application



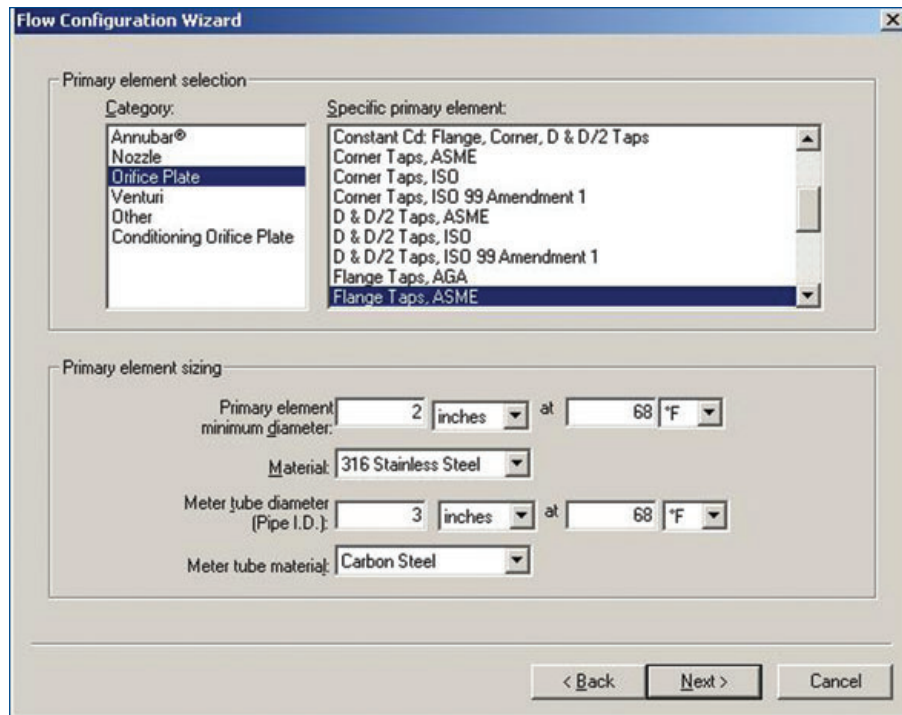
Quickly configure HART and FOUNDATION fieldbus MultiVariable transmitters to measure mass flow of virtually any process.

- *Download flow configurations for better control of your process*
- *Configure, maintain, diagnose and test Rosemount® HART® and FOUNDATION™ fieldbus MultiVariable transmitters*

Perform Extended Functions

The MV Engineering Assistant SNAP-ON application enables you to perform extended configuration, maintenance, diagnostics, and test calculation functions on Rosemount MultiVariable Transmitters, Mass ProBar and Mass ProPlate Flowmeters.

The MV Engineering Assistant SNAP-ON application is required to download flow configurations to all Rosemount HART and FOUNDATION fieldbus MultiVariable transmitters.



Configuring a device for your specific process is quick and easy with the MV Engineering Assistant SNAP-ON application.

Quick Measurement of Mass Flow

Easily modify MultiVariable transmitter configurations and densities to improve product quality and reduce by-product formation or quickly get a process up and running.

Engineering time is saved because plant engineers do not have to calculate viscosities, densities, flow equations, and related mass flow calculations.

Save time and money with the MV Engineering Assistant SNAP-ON application through faster setup, reduced chances of improperly configured flow transmitters, and accurate device measurements.

Offline or Online Mode

The MV Engineering Assistant SNAP-ON application runs on AMS Device Manager and can be used in either an online or offline mode. In an online mode, the MV Engineering Assistant SNAP-ON application communicates directly with the MultiVariable transmitter through AMS Device Manager. In offline mode, you can create a configuration to send to a transmitter once the MV Engineering Assistant SNAP-ON application returns to online mode.

Seamless Integration with AMS Device Manager

Since the MV Engineering Assistant SNAP-ON application is part of AMS Device Manager, you receive all the benefits of having a single software package and database for all your plant instrumentation. You can easily make calibration and configuration changes, access predictive diagnostics, and monitor multiple devices using a single tool.

AMS Device Manager enables you to reduce maintenance costs by detecting and diagnosing potential device problems before they can affect the process. Reduce planned shutdowns and trips to the field to focus your resources on higher-value activities.

Emerson Process Management

Asset Optimization

12001 Technology Drive
Eden Prairie, MN 55344 USA
T 1(952) 828-3633
F 1(952) 828-3006

©2011, Emerson Process Management.

The contents of this publication are presented for informational purposes only, and while every effort has been made to ensure their accuracy, they are not to be construed as warranties or guarantees, express or implied, regarding the products or services described herein or their use or applicability. All sales are governed by our terms and conditions, which are available on request. We reserve the right to modify or improve the designs or specifications of our products at any time without notice.

All rights reserved. AMS, Rosemount, and SNAP-ON are marks of one of the Emerson Process Management group of companies. The Emerson logo is a trademark and service mark of Emerson Electric Co. All other marks are the property of their respective owners.



AMS Suite: Intelligent Device Manager powers PlantWeb through predictive and proactive maintenance of intelligent field devices to improve availability and performance.