

Calibration Assistant SNAP-ON™ Application

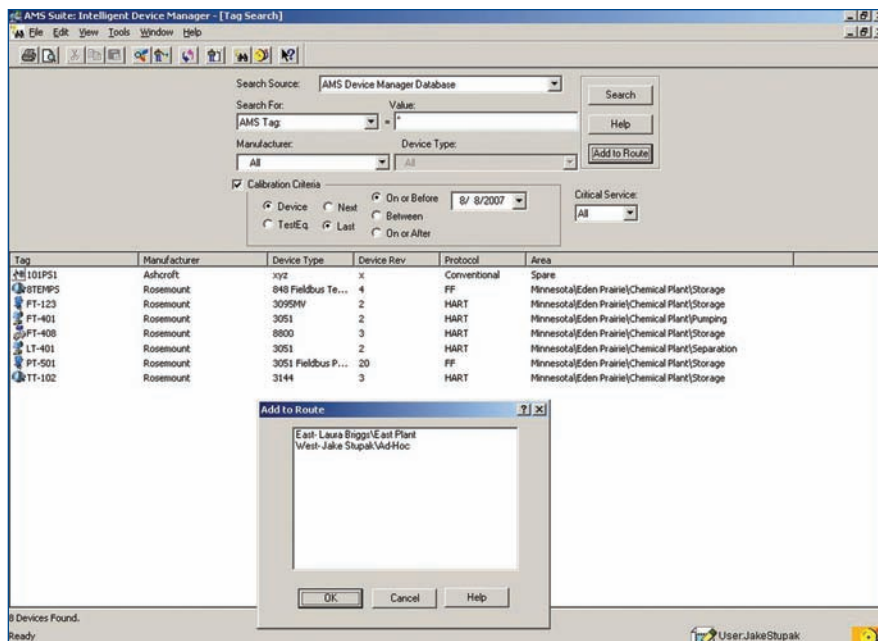


All device information is stored in a single database, so you can quickly evaluate calibration trends for each device and ensure calibrations are completed on time.

- *Interface to smart documenting calibrators, enabling automatic transfer of calibration test procedures and results*
- *Build calibration routes to establish ordered groups of devices for calibration*
- *Print a calibration certificate, calibration summary, and general calibration data report*

Add More Calibration Power with AMS Device Manager

AMS Suite: Intelligent Device Manager streamlines daily maintenance activities, including calibration, and provides an easy way to document those tasks. Within the standard AMS Device Manager capability, you can track calibration activities, as well as set up test definitions, define calibration schedules, conduct tests, record test results. AMS Device Manager allows for calibrating and tracking general field devices, flow verification, and external lab calibrations.



Easily assign devices to calibration routes to streamline your calibration activities.

The Calibration Assistant SNAP-ON application interfaces with documenting calibrators and manages the calibrations of HART®, FOUNDATION™ fieldbus, and conventional devices. For HART and conventional devices, calibration compares the input of the transmitter to an expected output measured by the calibrator. For FOUNDATION fieldbus devices, it compares the input of transmitters to a digital output.

Interface to Smart Documenting Calibrators

Load sets of Test Definitions (calibration routes) from AMS Device Manager into a documenting calibrator. Then take the calibrator to the field to test and adjust devices, storing the test results in the calibrator's memory. When the calibrator is reconnected to the AMS Device Manager PC, the test data will be transferred into the database.

Build Calibration Routes

When you add the Calibration Assistant SNAP-ON application to AMS Device Manager, you can group devices into calibration routes and organize multiple devices to be calibrated on the same schedule.

Print Calibration Reports

With AMS Device Manager, you can readily look at the performance of a single device over time and estimate the optimum calibration interval for that instrument. All device information is stored in a single, easy-to-use database so you can quickly evaluate calibration trends for each device. With all calibration activity information right at your fingertips, it's easy to identify those devices due for calibration, which is useful when defining future calibration schedules.

For more information on the Calibration Assistant SNAP-ON application, contact your local Emerson Process Management sales representative.

Emerson Process Management

Asset Optimization

12001 Technology Drive

Eden Prairie MN 55344

T 1(952)828-3633

F 1(952)828-3006



AMS Suite: Intelligent Device Manager powers PlantWeb through predictive and proactive maintenance of intelligent field devices to improve availability and performance.

©2011, Emerson Process Management.

The contents of this publication are presented for informational purposes only, and while every effort has been made to ensure their accuracy, they are not to be construed as warranties or guarantees, express or implied, regarding the products or services described herein or their use or applicability. All sales are governed by our terms and conditions, which are available on request. We reserve the right to modify or improve the designs or specifications of our products at any time without notice.

All rights reserved. PlantWeb, AMS, and SNAP-ON are marks of one of the Emerson Process Management group of companies. The Emerson logo is a trademark and service mark of Emerson Electric Co. All other marks are the property of their respective owners.