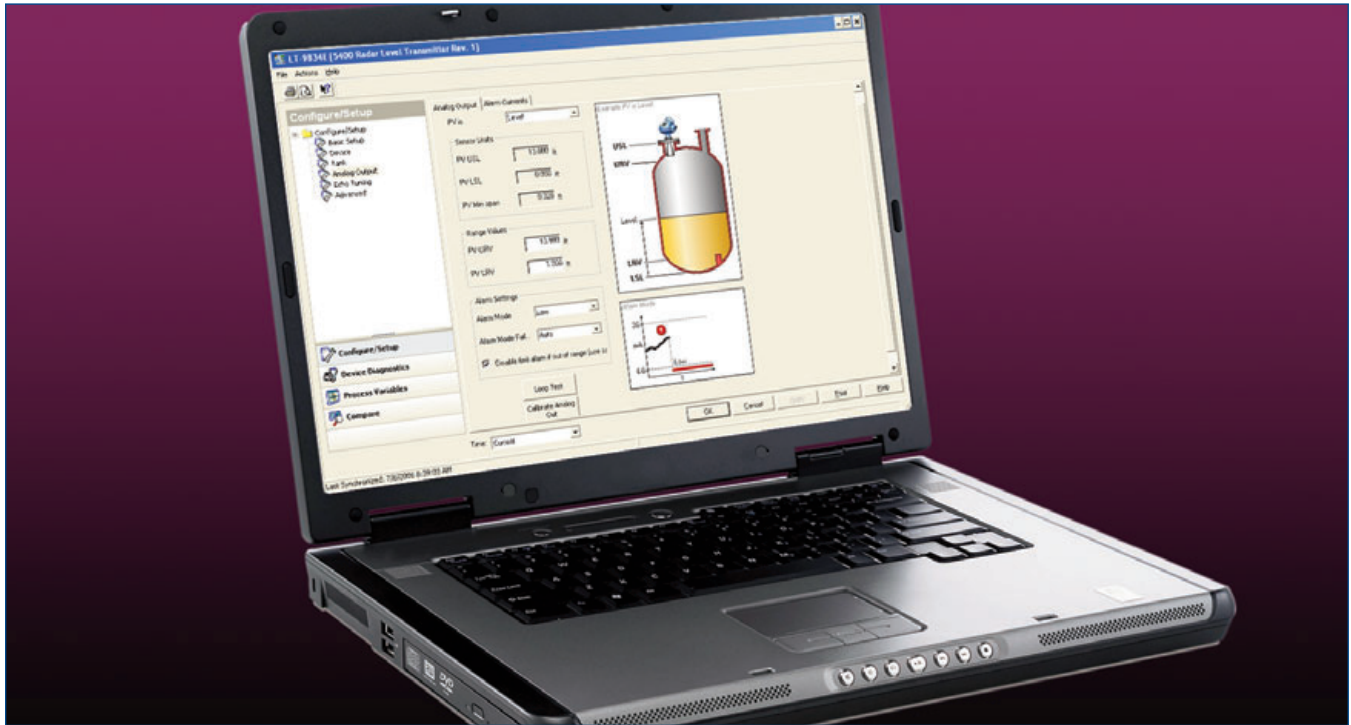


# AMS Device Manager with the Ovation™ Expert Control System



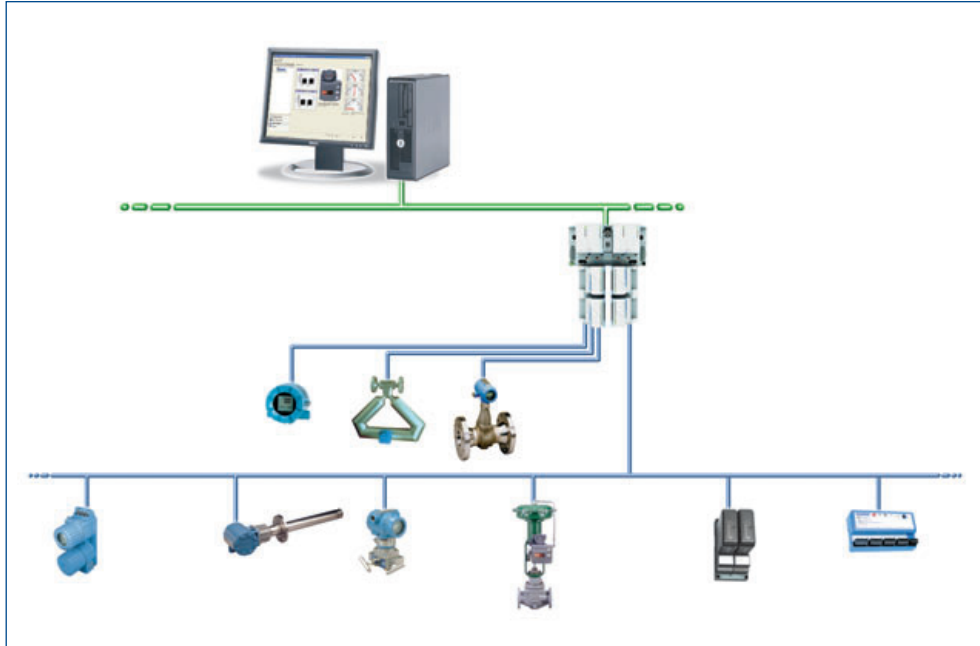
Gain increased visibility to asset health with predictive diagnostics in AMS Device Manager.

- Lower operating and maintenance costs with predictive diagnostic capabilities
- Reduce startup and commissioning costs with easy device configuration
- Monitor and control intelligent field devices through traditional 4-20 mA and digital device information
- Support HART® and FOUNDATION™ fieldbus devices
- Map secondary device variables to Ovation process points for display, alarms, and reports

## AMS Suite Delivers Results

AMS Device Manager, part of Emerson's suite of best-in-class predictive diagnostic software applications, delivers improved availability and reduced startup, commissioning, and maintenance costs for the power generation, water treatment, and wastewater treatment industries.

With AMS Device Manager, the Ovation expert control system offers seamless communication with intelligent field devices and bus technologies like HART and FOUNDATION fieldbus to deliver the power of predictive intelligence. AMS Device Manager interfaces with the Ovation system to provide additional diagnostic and monitoring capabilities.



*Using AMS Device Manager with Ovation enables you to access important predictive diagnostics.*

## AMS Device Manager Increases Asset Visibility

AMS Device Manager increases your visibility to predictive diagnostics available in HART and FOUNDATION fieldbus devices. With AMS Device Manager, you can configure, manage calibration, check status, and maintain documentation of all devices.

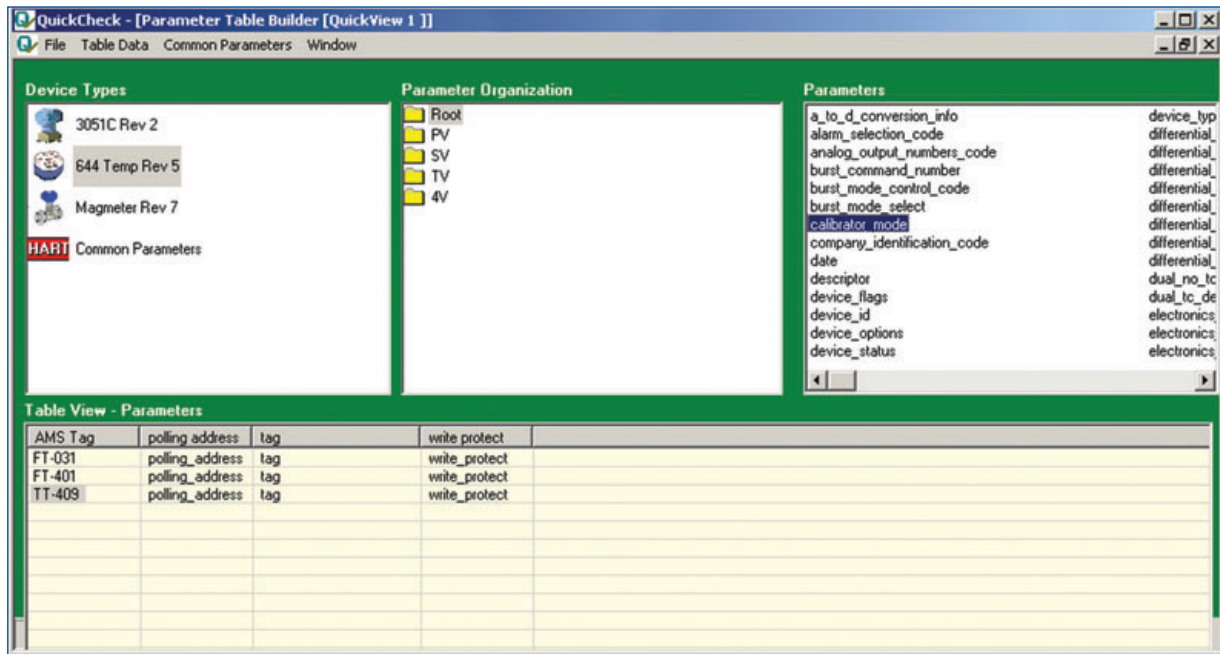
AMS Device Manager streamlines maintenance activities for instruments and valves in the plant. It offers online access to asset health, automatically capturing all device maintenance information. The Ovation connection to field devices provides consistent access to information from any HART or FOUNDATION fieldbus device that has a device description (DD) registered with the HART Communication or Fieldbus Foundations.

AMS Device Manager is powered by a server that provides:

- An interface to HART and FOUNDATION fieldbus devices and support for conventional devices
- An asset database that is a secure repository for field device information
- A platform to support SNAP-ON™ applications for increased value

AMS Device Manager provides detailed information about each asset in your plant, directly from the device. It can identify and predict problems as well as provide status information that can significantly reduce troubleshooting time.

You will also experience easier installation and startup, lower maintenance costs and improved asset performance – leading to improved process stability.



Check multiple devices at the same time with the QuickCheck SNAP-ON application.

## Ovation HART and FOUNDATION fieldbus I/O Interface Modules

Ovation's HART interface provides a higher degree of field device monitoring for more accurate process control. Once a HART device is connected to Ovation, configuration of traditional 4-20 mA signals and other device parameters is managed through AMS Device Manager.

The Ovation FOUNDATION fieldbus I/O module provides a mechanism for communicating information from fieldbus devices to Ovation for better diagnostics and predictive maintenance.

## SNAP-ON Applications

AMS Device Manager supports a number of SNAP-ON applications to boost the power of your solution. SNAP-ON applications use AMS Device Manager to communicate with devices and provide modular additional functionality to enhance an Ovation system.

The **AMS ValveLink™ SNAP-ON application** allows you to execute advanced valve diagnostic tests, such as valve signature, dynamic error band,

drive signal output signal, and step response. These diagnostics help you to zero in on valve problems directly from your computer screen.

Adding the **Calibration Assistant SNAP-ON application** extends your calibration capabilities. Track calibration activities, set up and test calibration procedures, and create calibration routes. It provides easy access to accurate, organized calibration records and automates data entry of calibration information.

The **QuickCheck™ SNAP-ON application** facilitates and accelerates interlock checkout to save time and improve safety. With the QuickCheck SNAP-ON application, you can focus on checking your digital control system's configuration and logic.

With the **Handheld Communicator Interface**, you can upload, download, and print device configurations from handheld communicators like the 475 and 375 Field Communicators or 275 HART Communicator.

## Combined Power

Combine the power of AMS Device Manager with Ovation for more efficient process control and better asset management. You can improve process availability with access to better information – information you can act on. This powerful solution allows you to replace guesswork with informed decisions.

AMS Device Manager with Ovation can help you:

- Provide your maintenance and operations staff with the ability to remotely configure, re-range, and perform diagnostics on your field instruments to improve process availability.

- Avoid unnecessary trips to the field.
- Reduce plant commissioning costs in new installations or after shutdowns.
- Inform your staff of new and recurring problems through device alerts.
- Reduce unnecessary instrument rebuilds by remotely assessing the condition of a field device.
- Optimize calibration activities by tracking device accuracy and calibration scheduling.

This winning combination will increase your overall production by reducing maintenance costs, limiting process variability, and improving plant availability.

## Emerson Process Management

### Asset Optimization

12001 Technology Drive  
Eden Prairie, MN 55344 USA  
T 1(952) 828-3633  
F 1(952) 828-3006

©2011, Emerson Process Management.

The contents of this publication are presented for informational purposes only, and while every effort has been made to ensure their accuracy, they are not to be construed as warranties or guarantees, express or implied, regarding the products or services described herein or their use or applicability. All sales are governed by our terms and conditions, which are available on request. We reserve the right to modify or improve the designs or specifications of our products at any time without notice.

All rights reserved. PlantWeb, AMS, Ovation, ValveLink, QuickCheck, and SNAP-ON are marks of one of the Emerson Process Management group of companies. The Emerson logo is a trademark and service mark of Emerson Electric Co. All other marks are the property of their respective owners.



AMS Suite: Intelligent Device Manager powers PlantWeb through predictive and proactive maintenance of intelligent field devices to improve availability and performance.