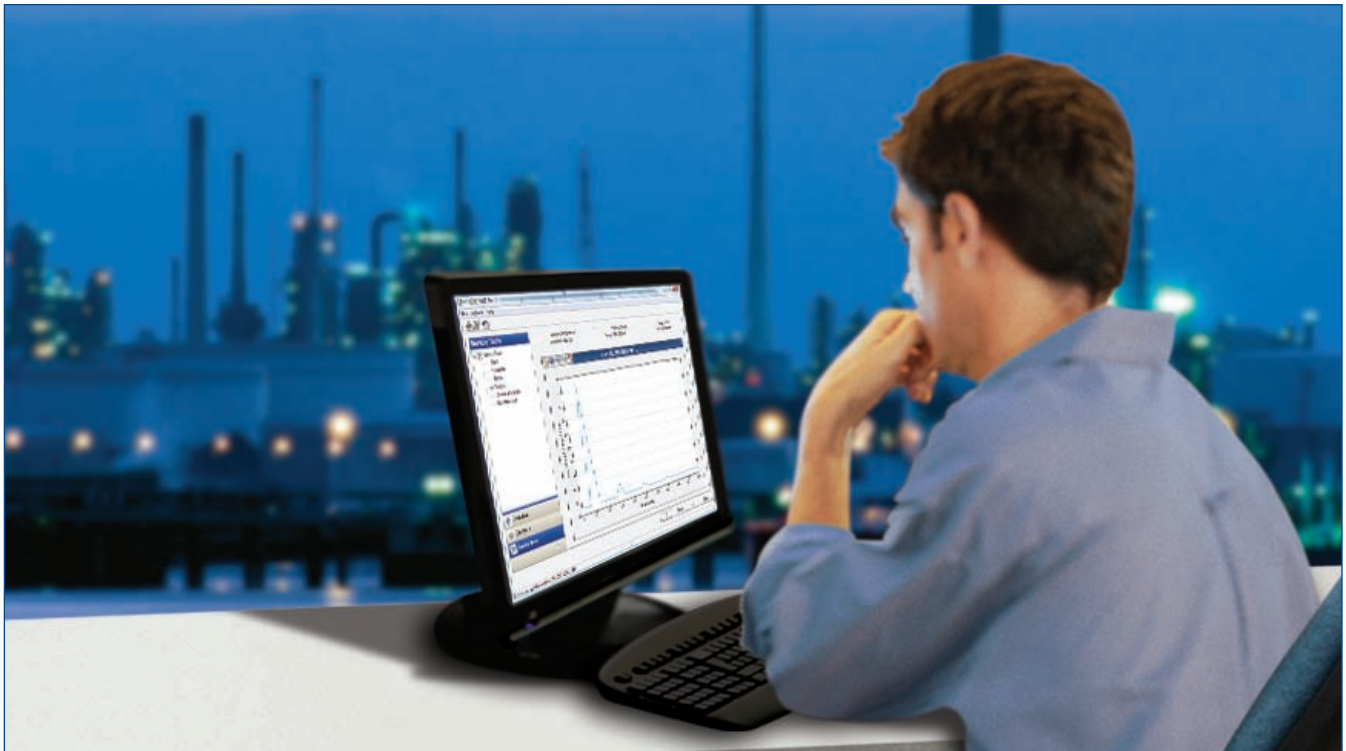


AMS Suite: Intelligent Device Manager



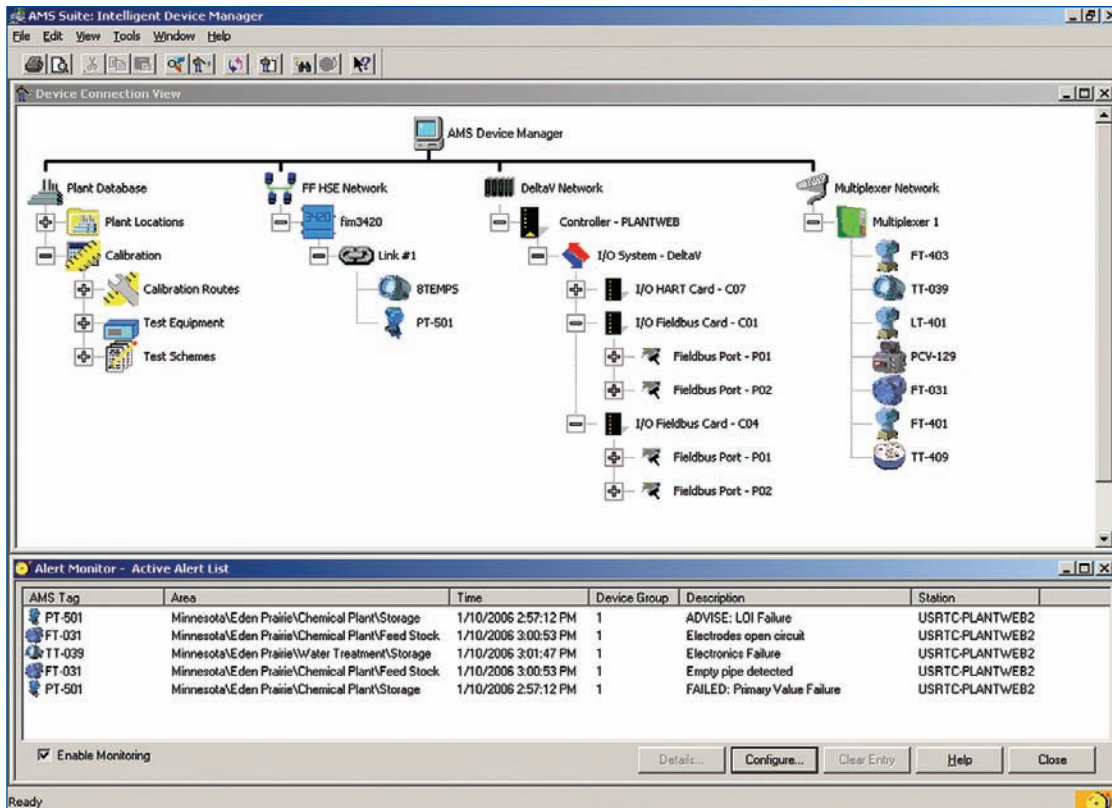
AMS Device Manager provides predictive diagnostics, simplifies field device configuration and calibration, and automatically documents your assets.

- Fully implement predictive diagnostics to improve plant availability and reduce maintenance costs
- Configure and calibrate HART®, FOUNDATION™ fieldbus, WirelessHART®, Profibus DP and conventional devices using one software application
- Identify, troubleshoot, and resolve device issues remotely and efficiently
- Seamlessly launch device tasks, methods, and SNAP-ON™ applications directly from AMS Device Manager

Predictive Maintenance For Instruments and Valves

AMS Suite: Intelligent Device Manager reduces commissioning and maintenance expenses while improving plant availability and product quality. In process industries where lost production from slower startups and longer downtimes can cause millions of dollars in lost revenue, plant personnel need accurate, real-time information.

AMS Device Manager saves you time and money by delivering valuable diagnostic information already contained within your plant in a clear, meaningful way. This means you can act before the process is affected by poor quality, or worse, a costly shutdown.



The Alert Monitor provides notification of alerts and status information so you can prevent process upsets.

AMS Device Manager Core Capabilities

Diagnostics

Quickly check the health of any connected wired or wireless device by viewing its status using the diagnostics and monitoring capabilities in AMS Device Manager. With the addition of IEC-approved *WirelessHART* and Profibus DP device support, AMS Device Manager extends predictive diagnostics to new areas of your plant. New measurement points enable a more comprehensive account of the health of your field devices.

In addition, a powerful, proactive method of diagnosing potential device problems is provided by the Alert Monitor feature. The Alert Monitor

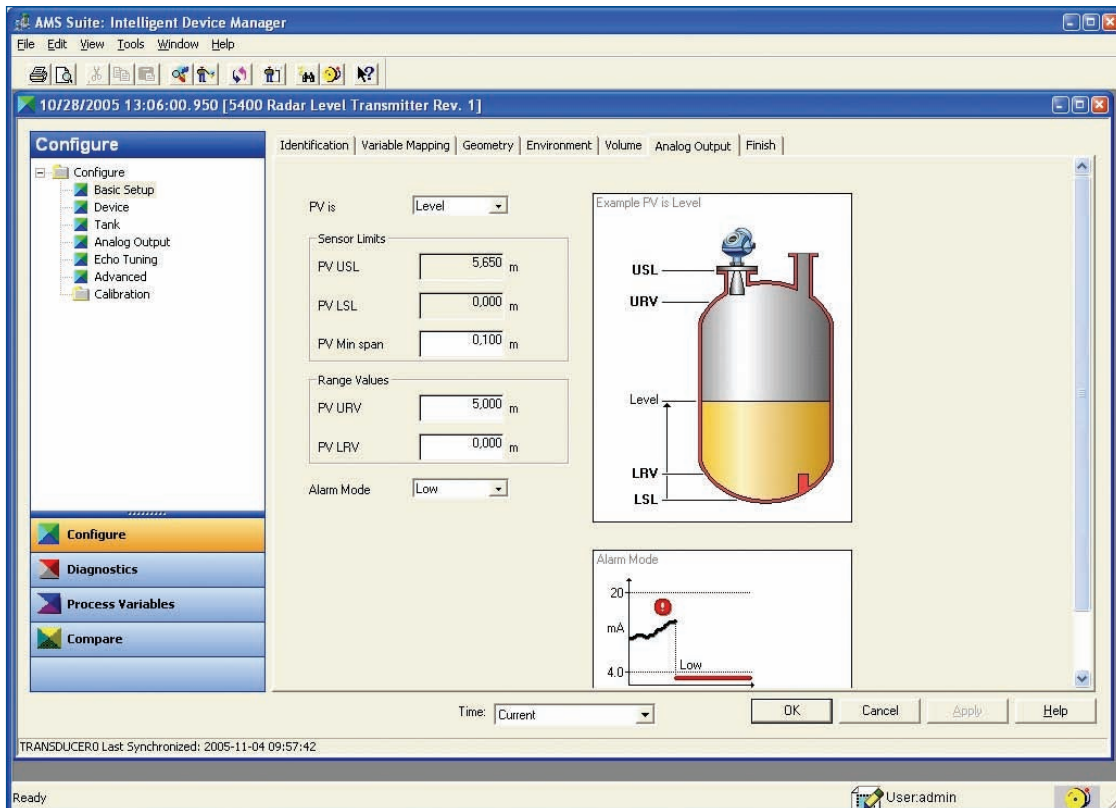
summary screen provides an overview of all device alerts, regardless of protocol, and gives you the ability to access additional device information for more details.

Alert latching allows you to identify new alerts and keep track of existing ones. Alerts can also be easily filtered so you can quickly see the information you need.

AMS Device Manager enables you to perform device self-tests and loop tests, and automatically documents the results.

When your intelligent devices are online with AMS Device Manager, you will know of problems occurring as they happen, not when they have already affected your process and the quality of your product.

AMS Suite: Intelligent Device Manager



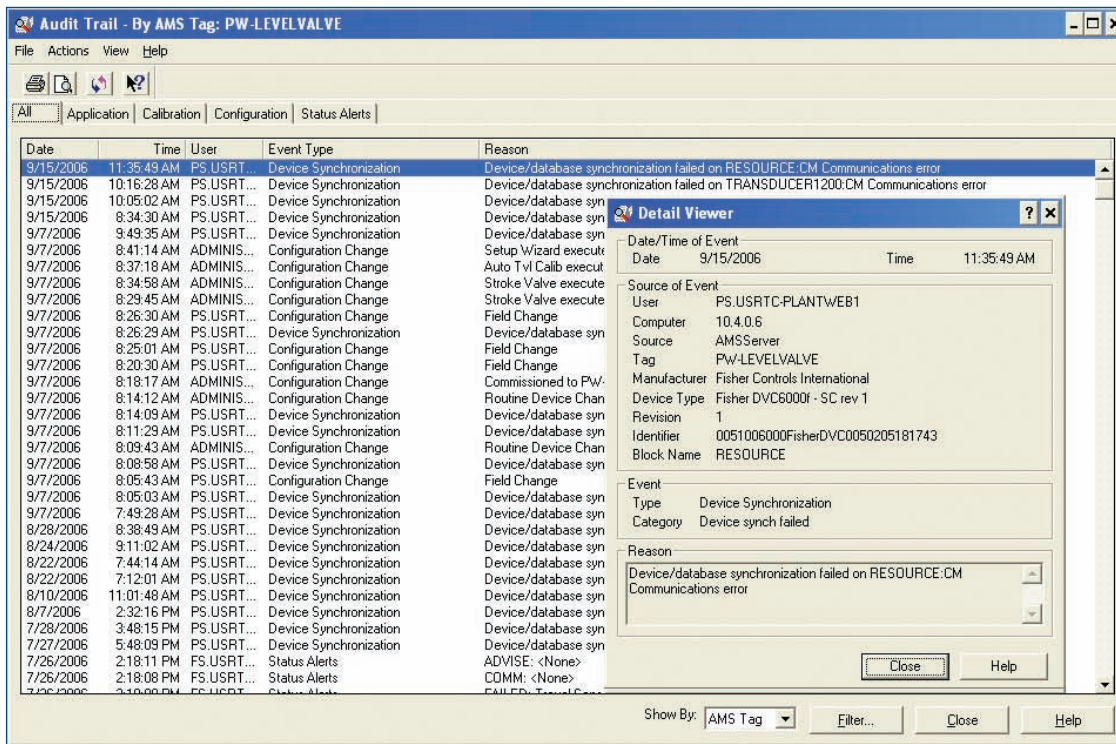
Even for a complex device, such as the radar level transmitter shown, configuration information is organized and easily accessed.

Configuration

AMS Device Manager makes configuration of devices simple, easy, and user-friendly. Using configuration management you can change, store, compare, and transfer device configurations. *WirelessHART* devices can be easily configured using the drag and drop provisioning capability. Simply connect the wireless device via a HART modem and then drag and drop it onto the wireless gateway. The network ID and join key are automatically written to the device.

With FOUNDATION fieldbus devices, commissioning and replacing devices can be done quickly and easily without the need for user interaction with the software, getting you up and running sooner and more efficiently.

Configuration information is read from any device, allowing you to make multiple changes simultaneously, compare configurations of like devices, or historical configurations on the same device. Setting up a new device configuration is as easy as a couple of clicks. Simply transfer the existing database configuration into the new device and you are up and running. Digital valve controllers, complicated flow devices, multivariable transmitters, and wireless devices are configured quickly and easily with AMS Device Manager.



The Audit Trail will capture all system events with additional information recorded when available. Manual entries can also be made if desired.

Documentation

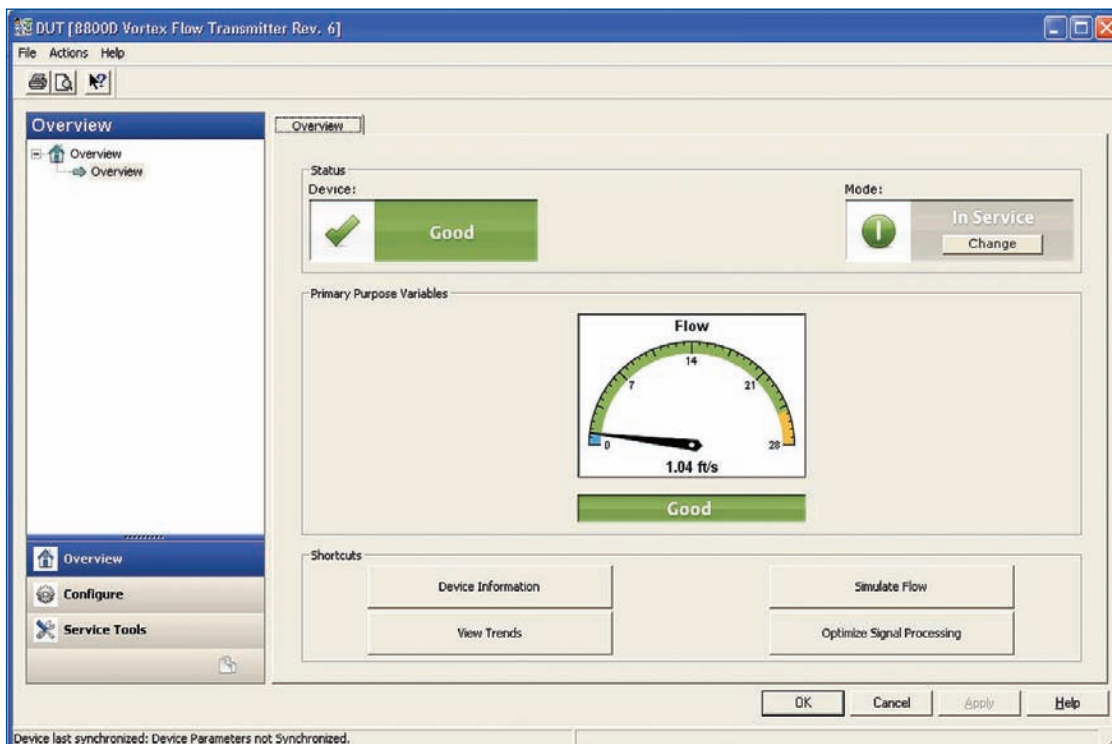
AMS Device Manager saves time and money by automating documentation around device tasks. For instance, when you make a configuration change to a device, the Audit Trail will capture when the change was made and who made it. In addition, manual entries can be created to document events not automatically captured, such as a lightning strike at the plant.

Each device is also provided with a Drawings and Notes field, used to create dynamic links to your custom documents and websites. User manuals, installation guides, P&IDs, and technical contact information can be kept right at your fingertips where you need it, not in a filing cabinet in another location.

Additional documentation capabilities include the ability to create reports, perform database searches, and export data into a different format.

Calibration

AMS Device Manager supports the definition of device test schemes, device calibration scheduling, and the management of device calibration data. Test schemes are defined by the calibration interval, test point and accuracy requirements, and set-up and clean-up instructions. Design calibration test schemes for individual devices or groups of instruments. Then, drag and drop the transmitter icons onto your test scheme to assign devices.



With PlantWeb Alerts & Status Screens, you can view process variables, monitor device status, and detect alert events within any device connected to your host system.

Online or Offline

Online

Using AMS Device Manager online enables access to the full power of your intelligent field devices. You can remotely view the process variables, monitor device status, detect alert events, and configure any device connected to your host system, including DeltaV, Ovation, RS3™, and PROVOX®. Interfaces are also available to help you easily integrate with new technology and equipment from other vendors. Interface options include:

- HART Multiplexer
- HART Over PROFIBUS
- FOUNDATION fieldbus High Speed Ethernet
- Kongsberg Maritime
- Remote Operations Controller (ROC)
- Router DTM
- Siemen PCS 7
- Wireless

Other third party solutions provide specific I/O cards for some PLC and DCS systems to emulate a HART multiplexer.

Offline

Working offline means you have access to the historical device information in the plant database, and can communicate to one device at a time using a HART modem. Device configuration and troubleshooting can be performed offline in the shop or at a termination panel.

The Handheld Communicator Interface allows you to transfer HART configuration information from your 475 Field Communicator for devices that are not yet connected to your online network. Device information is passed to and from AMS Device Manager to populate the database, keeping all device records current.

SNAP-ON™ Applications

AMS Device Manager SNAP-ON applications are recommended to gain enhanced information and diagnostic functionality for a device or group of devices. SNAP-ON applications available with AMS Device Manager include:

- AlertTrack™
- AMS ValveLink®
- AMS Wireless
- Calibration Assistant
- MV Engineering Assistant
- Meter Verification
- QuickCheck™

The PlantWeb Advantage

Get off to a strong start with your technology investment. Use Emerson's PlantWeb Services to ensure you are effectively employing AMS Device Manager. Emerson experts can help you use the diagnostics from your smart devices to full advantage. Our experts will install the application and complete your initial configurations. Then we can implement re-engineered maintenance tasks to optimize your use of AMS Device Manager while integrating data with your enterprise asset management system to enable measurement of improvement to your facility's bottom line.

©2010, Emerson Process Management.

The contents of this publication are presented for informational purposes only, and while every effort has been made to ensure their accuracy, they are not to be construed as warranties or guarantees, express or implied, regarding the products or services described herein or their use or applicability. All sales are governed by our terms and conditions, which are available on request. We reserve the right to modify or improve the designs or specifications of our products at any time without notice.

All rights reserved. AMS, PlantWeb, SNAP-ON, DeltaV, Ovation, AlertTrack, QuickCheck, and ValveLink are marks of one of the Emerson Process Management group of companies. The Emerson logo is a trademark and service mark of Emerson Electric Co. All other marks are the property of their respective owners.

Emerson Process Management

Asset Optimization Division

12001 Technology Drive
Eden Prairie, MN 55344 USA
T 1(952)828-3633
F 1(952)828-3006