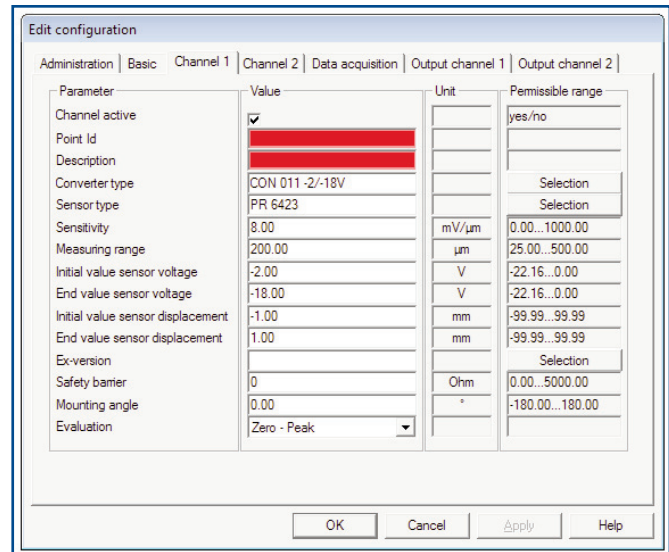


# Configuration Software

- Configuration software for CSI 6500 protection monitors
- Pre-configured user-selectable measurement types simplify configuration
- Configuration is password protected with 4 user login levels
- Context sensitive help



## Application

The CSI 6500 configuration software for machinery protection allows you to configure protection modules, view real-time vibration, and monitor system and sensor health.

The intuitive configuration process starts by selecting a card type. Next, the configuration software presents a simple tabular view with all configuration settings visible. Tabs help you sort information between inputs, outputs, advanced machine diagnostics and administrative tasks. Permissible ranges are visible for every required entry to help you understand the bounds of parameters. Preset parameters are automatically loaded when Emerson sensors and convertors are used.

Real-time data can be displayed during system configuration to verify that wiring, card settings, and instrumentation are healthy and configured properly. Real-time information such as gap voltages, waveform data, and overall vibration data are viewable.

On-going maintenance functions, such as resetting latching relays or loading a saved configuration, can be easily performed from the software. The software can run on PCs or laptops.

With the system configuration software, the following monitors of the A6000 family can be configured:

A6110, A6120, A6125, A6140, A6210, A6220, A6310, A6312, A6312-8, A6410, A6418, A6620, A6630, A6740, A6740-10, A6824, A6824R

## Configuration Software

The configuration kit contains the following parts:

- CD-ROM with CSI 6500 protection module configuration
- Installation instructions
- Configuration cable, 2m, with a 9-pole sub-D plug and a 6-pole mini DIN diode plug for connecting to CSI 6500 protection monitors

- DV-adapter 9-pole SUB D on 25-pole SUB D type AB914F
- Two adapter cables with SMB-coax plugs on both sides for the connection of an oscilloscope to the CSI 6500 protection monitors, length 3m, 296-201-794 by Radiall
- Two adapters BNC/SMB R191 209 by Radiall
- Free space on hard disk: at least 250 MB
- Operating system: Windows 2000, Windows XP, Windows Vista or Windows 7
- Disk drive: CD-ROM
- Keyboard and mouse: Microsoft or Microsoft-compatible devices
- RS232 Interface: One free interface

## Configuration Programs

The configuration package contains the following programs:

- A6910 Configuration software for CSI 6500 protection monitors

## System Requirements

To load the programs, a PC or laptop must meet the following minimal prerequisites:

- Processor: Pentium II or better, minimum clock frequency 500 MHz
- Graphic screen resolution: minimum 600 x 800 pixels
- Working memory: must meet the requirements of the operating system

### Order number:

A6910-KIT: Includes software CD, cables, and adapters

A6910: Includes software CD only

### WARNING!

Installation and commissioning of a device may only be made by trained staff. The manufacturer is not liable for damages caused by improper use or by operation errors of unauthorized persons.

**Emerson Process Management**  
**Asset Optimization**  
835 Innovation Drive  
Knoxville, TN 37932  
T (865) 675-2400  
F (865) 218-1401  
[www.assetweb.com/mhm](http://www.assetweb.com/mhm)

©2012, Emerson Process Management.

The contents of this publication are presented for informational purposes only, and while every effort has been made to ensure their accuracy, they are not to be construed as warranties or guarantees, express or implied, regarding the products or services described herein or their use or applicability. All sales are governed by our terms and conditions, which are available on request. We reserve the right to modify or improve the designs or specifications of our products at any time without notice.

All rights reserved. Machinery Health is a mark of one of the Emerson Process Management group of companies. The Emerson logo is a trademark and service mark of Emerson Electric Co. All other marks are the property of their respective owners.